

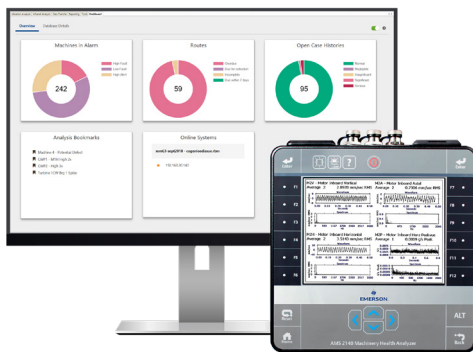
Go Emerson

Route-Based Vibration Portable Swap-out for AMS 2140



OFFER:

Trade-in a competitive route-based vibration portable and receive standard 4-ch AMS 2140 Machinery Health Analyzer for a **significant discount**.



ALSO INCLUDED IN THIS OFFER:

Software: Discounted AMS Machinery Manager subscription software

Training: Class certificate included

Emerson's AMS 2140 is the industry's foremost Portable Vibration Analyzer
...and we want to prove it to you.

BENEFITS & FEATURES

AMS 2140 Machinery Health Analyzer

- Enjoy 30-60% faster route data collection times – one of the fastest devices in the market.
- Includes PeakVue Plus technology for earliest and simplest indication of bearing, gear and lubrication issues.
- 10-hour battery life and ergonomically designed to make long days in the field easier.
- Powerful 4-channel data collection tools like cross channels analysis, bump testing, dual orbit plots, and more.
- Advanced analysis tools like fault frequency overlays for spectral peak identification, waveform autocorrelation, and parameter trends 2-years long.
- Monitor a broad range of machinery from variable speed equipment, complex gearboxes, high speed compressors and sleeve bearing turbo machinery.

AMS


EMERSON



Offer Details (Continued)

GUARDIAN SUPPORT: Offer includes base Guardian Support.

- *Factory Module Replacement (FMR) Support package available at 50% discount for 1-yr.*

SOFTWARE: AMS Machinery Manager subscription software included at a significant discount.

TRAINING: ACERT-VIBETRAIN is included at no charge with the purchase of an AMS 2140 and AMS Machinery Manager on a single purchase order.

ADDITIONAL ITEMS:

- Upgrades like hazardous area rating, wireless capability, DLPs, hard shell case, and additional accessories are available.

Go Emerson Requirements and Process

All POs must include the make/model/serial number of each unit being traded-in in order to complete order. Please include the following language in your quotes and purchase orders.

AMS 2140

Additional & Advanced Functionality Available

Balancing

4-plane precision balancing

Case

Pelican case for secure, protected transport

Wireless Headphones

Listen to data being collected

SpeedVue

Get speed of machine without reflective tape

Transient Recording

Record continuous waveforms up to a day in length

ODS/Modal

Collect ODS/Modal data quickly to animate physical movement of machinery, an important tool in identifying the root cause of chronic or complex machinery problems.



©2024, Emerson. All rights reserved.

The Emerson logo is a trademark and service mark of Emerson Electric Co. The AMS logo is a mark of one of the Emerson family of companies. All other marks are the property of their respective owners.

The contents of this publication are presented for informational purposes only, and while diligent efforts were made to ensure their accuracy, they are not to be construed as warranties or guarantees, express or implied, regarding the products or services described herein or their use or applicability. All sales are governed by our terms and conditions, which are available on request. We reserve the right to modify or improve the designs or specifications of our products at any time without notice.

Contact Us

🌐 www.emerson.com/ams

AMS


EMERSON