



Valve Actuation in a Compact and Innovative Package

Bettis™ SCE300
Intelligent and reliable quarter-turn electric actuator



EMERSON™

SCE300: Smart, Compact, Electric



The SCE300 is an intelligent quarter-turn electric actuator from the Bettis family of actuators. Compact and lightweight, this all-in-one actuator fits the features of larger, heavier actuators into a neat, innovative design. Deploy the SCE300 to maintain effective control of low-torque, quarter-turn valves and dampers even in large and complex plants.

BETTIS™

To strive for and maintain maximum levels of process efficiency, your valves always need to function as intended. Emerson provides its customers with highly reliable and innovative actuator technologies to drive their valves, with the new Bettis SCE300 electric actuator punching above its weight given its compact size and attractive cost of ownership.





A new, **RELIABLE** actuator for your valve applications.

The new SCE300 puts reliability at the forefront of its purpose.

Reliability ▶ p3

CONTROL your valves with precision and intelligence.

The SCE300 allows you to customize the level of control required for your valve automation application.

Control ▶ p7

Practical, compact, and **FLEXIBLE**.

The no-nonsense SCE300 is designed to fit right into your valve automation application.

Flexibility ▶ p5

Maximize **EFFICIENCY** by minimizing user complexity and operating cost.

The all-round simplicity of the SCE300 equates strongly to efficiency in your plant.

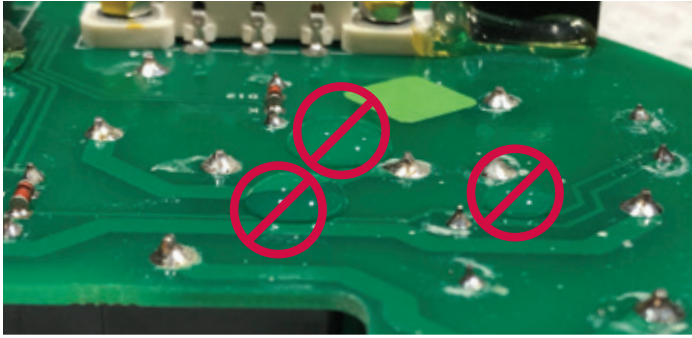
Efficiency ▶ p9



A new, **RELIABLE** actuator for your valve applications.

Regardless of duty cycle, your valve actuators absolutely must function when called upon. Drawing upon years of actuator design experience and customer feedback, Emerson designed a better actuator with reliability in mind. Resistant to the decaying nature of external environments and mechanically durable within, you can rely on the Bettis SCE300 to meet your valve actuation demands.

Resistant to the elements



Condensation protection is provided by a 10 W heater within the unit, activated automatically when the control enclosure temperature drops below 10 °C (50 °F).



Over-temperature protection is provided by a sensor located within the control enclosure, as to limit the temperature of the motor and control system.



Electrostatic powder coating provides protection from the elements.



Innovative motor is duty-rated at 100% for on/off applications. The motor is also capable of supporting S4-50%, 1,200 st/hr modulating duty.

Mechanical durability in a compact package



Lightweight yet robust outer body, composed of die-cast anodized aluminum.



Robust materials are selected for loaded parts; for example, sintered alloy epicyclic gearing and cast-iron output drives.



Smooth gearing is achieved with an all-metal, internally-located, greased, and self-locking epicyclic gearing system, which helps eliminate the need for motor brakes.



Practical, compact and FLEXIBLE.

Actuators must slot seamlessly into seemingly endless configurations of plants and applications. The Bettis SCE300 provides flexibility not only during installation and commission but also when you need to interact with the valve – keeping said interaction as brief and simple as possible.

Adaptable to any quarter-turn valve in any plant



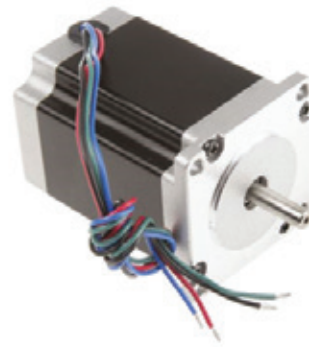
Simple installation onto small valves without stressing the pipe-work.



Six-model size range offers operating nominal torque from 63 Nm (46 ft lbs) to 2,000 Nm (1,475 ft lbs).

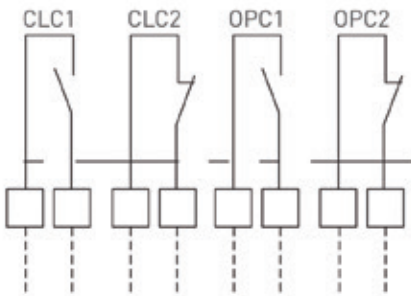


Flexible valve connection is possible via a dual-drilled interchangeable base plate, making the actuator readily adaptable to most types of quarter-turn valves.



Adaptable motor automatically provides compatibility with a wide range of voltages in DC or AC. The motor is field-configurable to run at three distinct speeds (e.g. 15, 28, and 48 seconds open-to-close for the four smallest sizes of SCE300).

Flexibility in setup or intervention when the need arises



Four latched-type output contacts are available for remote indication of fully open or closed status. Output contacts for monitoring and blinker/local selector indication are also available.



Non-intrusive design keeps the terminal enclosure separate from the electronics and motor compartment. Only the wiring terminal is exposed during field installation.



Manual override is always engaged, featuring a handwheel that does not rotate while the motor is in operation. This feature can be used when power to the actuator is lost.



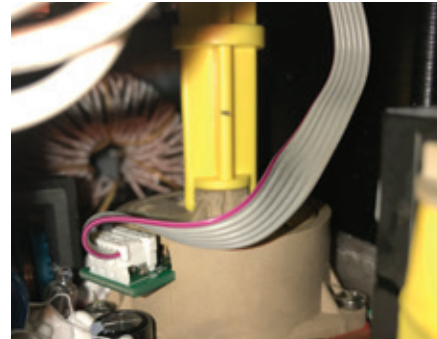
CONTROL your valves with precision and intelligence.

Modern valve actuators must do more than just fully open and close valves; at a minimum, you need to keep speed, torque, and position on a tight rein. The Bettis SCE300 does all of this, and more.

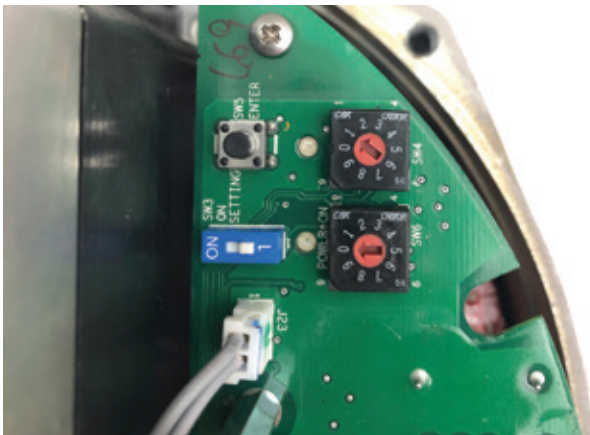
User-friendly control, whether hands-on or not



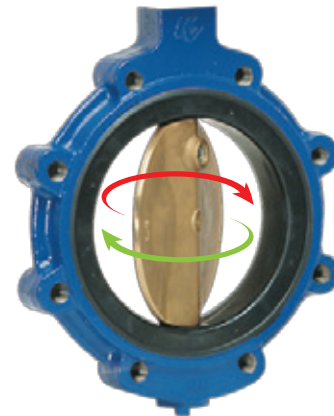
Mechanical travel stops at the base of the enclosure prevent over-travel during operation with the handwheel or motor, providing $\pm 10^\circ$ of over/under travel in each direction (resulting in 70° minimum and 110° maximum angular stroke).



Absolute position sensor covers 110° of rotation, with travel endpoints set by the rotary switch (standard)

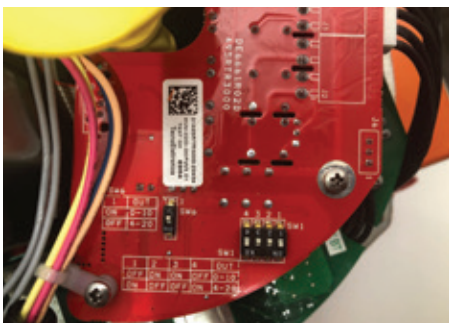


Precise torque control is configurable via user-friendly rotary switches located inside the control enclosure; bi-directional torque values of 50%, 75%, and 100% of nominal torque may be selected.



Integral speed control is independently adjustable in opening and closing directions.

Optional modules add even more functionality



OM1: input/output module offers analog positioning control and position feedback, 4 additional SPST output contacts (configurable) independently settable at 10 points along the stroke, information about loss of input signal, and a local selector position alarm (with OM3 installed).



OM3: local interface module offers local/remote selection, open/closed push-buttons, and two LEDs for local indication (note: OM3 is available in weather-proof version only).



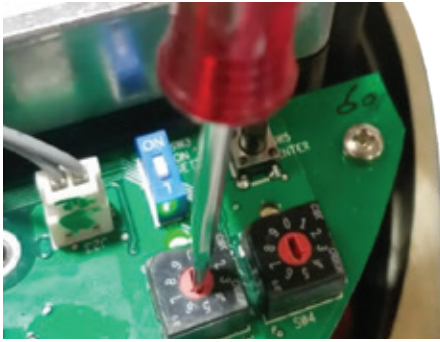
OM13: 3-wire connection module allows 120/240 VAC single-phase, 3-wire control for open/closed operations without an additional power supply.



Maximize EFFICIENCY by minimizing user complexity and operating cost.

You always strive to maximize your valves' operational efficiency, and you know that minimizing cost and downtime is the name of the game. The Bettis SCE300 achieves these goals via its simple operation and low installation, operating, and maintenance costs.

Simple to use and configure



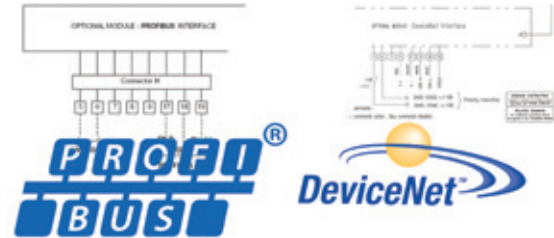
Easy configuration via two rotary switches on the logic board to configure each function, which includes position, torque, open/close speed, reverse mode (clockwise/counter-clockwise) and output contacts.



Clear position indicators located on top of the actuator, for top-down, accurate visual reference of valve position. An optional "beacon"-type indicator can be viewed horizontally.



Local or remote control of the actuator's functions and parameters.



Simple connection to a bus system is possible with the optional OM9 (PROFIBUS DPV0/V1) and OM11 (DeviceNet) communication cards.

Minimize cost before, during, and after installation



Low installation costs given that a single cable size is used across all actuator sizes.



Cost-effective actuator via design compactness and simplicity, which also makes the base actuator highly stockable.



Low power consumption of the actuator's motor minimizes running costs.



For complete list of sales and manufacturing sites, please visit www.emerson.com/actuationtechnologieslocations or contact us at info.actuationtechnologies@emerson.com

NORTH & SOUTH AMERICA

19200 Northwest Freeway
Houston TX 77065
USA
T +1 281 477 4100

Av. Hollingsworth
325 Iporanga Sorocaba
SP 18087-105
Brazil
T +55 15 3413 8888

ASIA PACIFIC

No. 9 Gul Road
#01-02 Singapore 629361
T +65 6777 8211

No. 1 Lai Yuan Road
Wuqing Development Area
Tianjin 301700
P. R. China
T +86 22 8212 3300

MIDDLE EAST & AFRICA

P. O. Box 17033
Jebel Ali Free Zone
Dubai
T +971 4 811 8100

P. O. Box 10305
Jubail 31961
Saudi Arabia
T +966 3 340 8650

24 Angus Crescent
Longmeadow Business Estate
East
P.O. Box 6908 Greenstone
1616 Modderfontein Extension 5
South Africa

T +27 11 451 3700
EUROPE

Holland Fásor 6
Székesfehérvár 8000
Hungary
T +36 22 53 09 50

Strada Biffi 165
29017 Fiorenzuola d'Arda (PC)
Italy
T +39 0523 944 411

 www.emerson.com

 [emrsn.co/facebook](https://www.facebook.com/emrsn.co)

 [emrsn.co/linkedin](https://www.linkedin.com/company/emrsn.co)

 [emrsn.co/twitter](https://www.twitter.com/emrsn.co)

www.Emerson.com/Bettis-SCE300

The Emerson logo is a trademark and service mark of Emerson Electric Co. © 2019 Emerson Electric Co. Bettis™ is a registered trademark of one of the Emerson family of companies. All other marks are the property of their respective owners. © 2019 Emerson. All rights reserved.
BRO-02-04-0216-EN-CS / Printed in United States / 09-19



CONSIDER IT SOLVED.™