

DeltaV™ Live provides a world-class operations experience, designed for today's high-performance operator requirements. The highly-customizable Human Machine Interface (HMI) is the first to natively support HTML5 - laying the foundation for universal, cross-platform graphics that are easy to design and configure.

A new graphics studio simplifies graphics configuration that increases productivity and removes reliance on scripting for common tasks. Experience single-click access to graphics, built-in hierarchical navigation, directories, and other applications.

Modern

Sets the foundation for platform independence for displays



Modern: DeltaV's first HMI to natively support HTML5, setting the foundation to take advantage of the wide variety of desktop, tablet and phone platforms, giving users more flexibility to choose the right platform or device for what they are doing and where they are working. Regardless of the device, digital workers will have intuitive and familiar displays to make decisions to run their plants safely and more effectively.

Built-for-Purpose Operations Experience

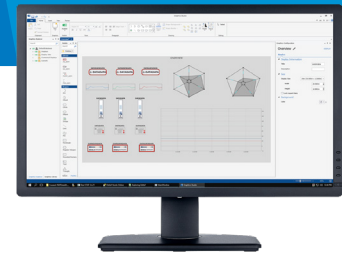
Scalable, zoomable graphics with built-in navigation



Built-for-purpose operations experience: DeltaV Live was built with Human Centered Design principles from the beginning, incorporating Center for Operator Performance consortium best practices and industry standards, such as built-in display hierarchies and hierarchical navigation. Operators can augment their environment on the fly, reducing the dependency on pre-engineered solutions, allowing them to more easily and intuitively monitor and control their plants.

Easy

Configuration is intuitive, and built for the entire graphics lifecycle



Easy: Graphics configuration is intuitive, and built for the entire graphics lifecycle – from design, to operation, to maintenance. Many display features that used to require complicated, time-consuming scripting, such as display hierarchies, workstation layouts, navigation bars with alarm roll up, and much more, are now available out-of-the-box as drag-and-drop components. In addition, accommodating operators' change requests has never been easier, as engineers only need to make a single change, and it can be automatically applied to many items on a display, or even across several displays.

***Available in Fall 2018**

Emerson

North America, Latin America:

+1 800 833 8314 or
+1 512 832 3774

Asia Pacific:

+65 6777 8211

Europe, Middle East:

+41 41 768 6111

www.emerson.com/deltav

©2018, Emerson. All rights reserved.

The Emerson logo is a trademark and service mark of Emerson Electric Co. The DeltaV logo is a mark of one of the Emerson family of companies. All other marks are the property of their respective owners.

The contents of this publication are presented for informational purposes only, and while diligent efforts were made to ensure their accuracy, they are not to be construed as warranties or guarantees, express or implied, regarding the products or services described herein or their use or applicability. All sales are governed by our terms and conditions, which are available on request. We reserve the right to modify or improve the designs or specifications of our products at any time without notice.