

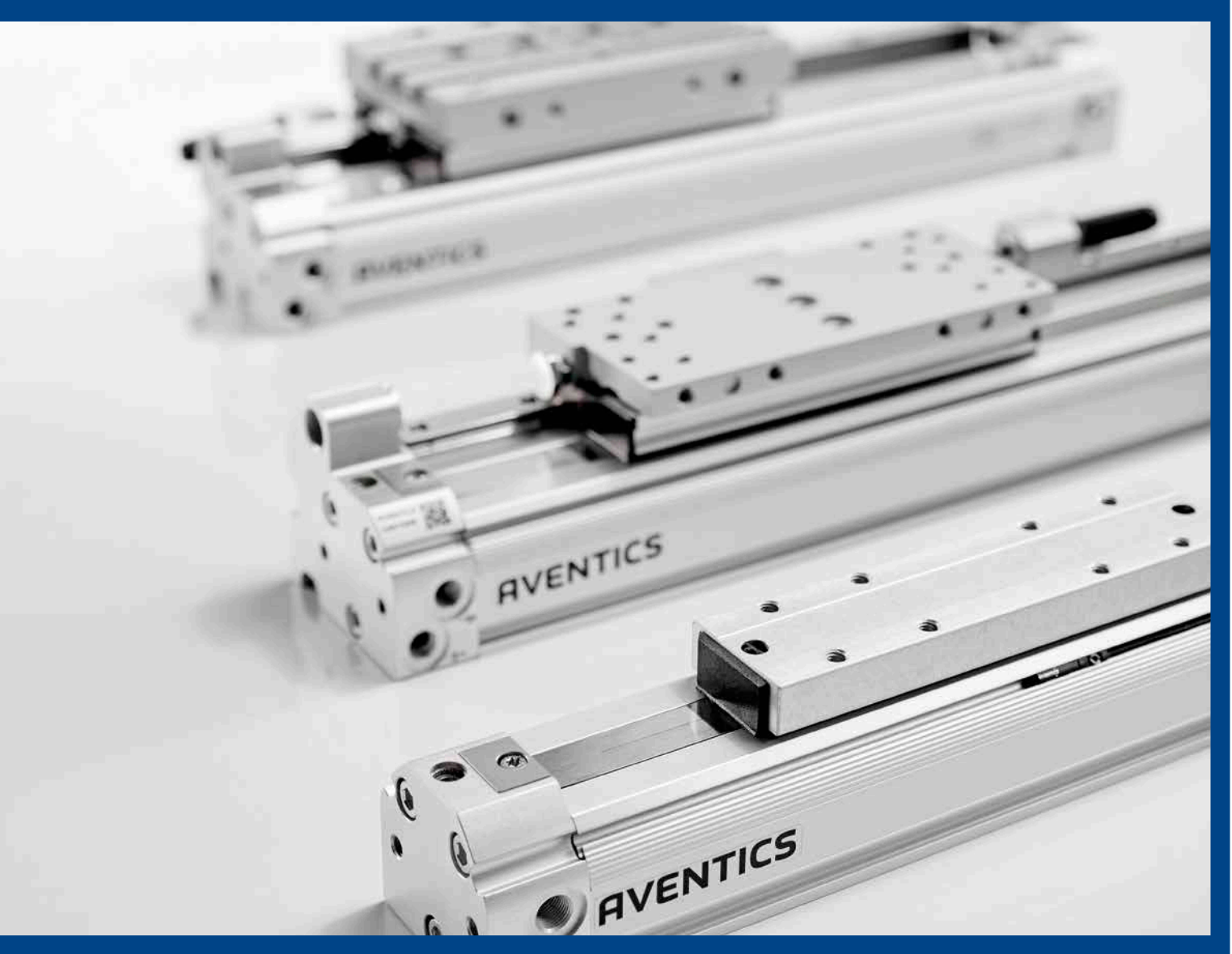


## RTC Series Rodless Cylinders. High-Power Oval Drive

### AVENTICS™ RTC Series Rodless Cylinders

With different key strengths, they cover a large range of movements and positions in many applications.





## Ideally suited for specific individual tasks or as a solid base for handling applications

The unique oval piston shape and one-piece slide/piston unit are just two characteristic features of RTC series rodless cylinders besides their many common equipment options. They are available in four variants: as a Basic Version, Slide Bearing, Compact Guide, and Heavy Duty versions for large loads. With different key strengths, they cover a large range of movements and positions. The rodless cylinders offer optimized stroke lengths in a compact size. This saves space and facilitates machine design. The range of applications extends from piston diameters of 16 mm up to 80 mm and stroke lengths up to 9,900 mm. The cylinders feature extreme repeatability and cover a large speed range from 0.01 m/s to >20 m/s.

- The oval piston enables higher loads and torques, and highly compact designs
- One-piece slide and piston increase stability
- Minimal leakage and a wide range of speeds thanks to a special internal sealing strip and grease

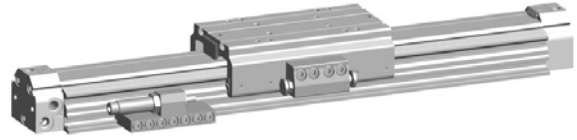
# Oval drive with extra power, compactness, precision, and speed

## RTC – Basic Version



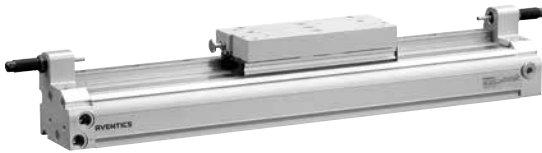
**RTC-BV** – Basic Version internal guide with a unique oval piston design. Typical application areas include: material flow, door openers, cutting and drive processes.

## RTC – Slide Bearing



**RTC-SB** – Integrated adjustable slide bearing guide. Typical applications: material handling, stop gates, and pushers.

## RTC – Compact Guide



**RTC-CG** – Compact precision guiding. Typical application areas: medium loads in settings with limited space.

## RTC – Heavy Duty



**RTC-HD** – High-precision guide for heavy loads. Typical application areas: as a base axle for handling applications, very high load capacity.

## CKP – Connection Kit Position



**CKP** – is particularly suitable for applications requiring the movement of heavy loads. It provides sturdy, ultra-precise guiding with excellent repeatability.

## GSU – Guided Slide Unit



**GSU** – With its flat design, this high-performance guided slide unit is the ideal basis for many handling systems.



For further information on these or any other AVENTICS product, visit [Emerson.com](http://Emerson.com)



## The RTC cylinders offer compelling advantages at all levels



### Advantage: oval piston

- High load capacity and rigidity
- The wide slot offers optimized belt return and smoother running
- Lateral torques are absorbed by the piston
- For compact machine designs



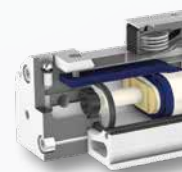
### Advantage: performance

- High-tech grease and specific sealing material for smoother running and extended service life, coupled with decreased wear
- Compatible with a large speed range from 0.01 m/s up to >20 m/s
- Can be used in a wide temperature range
- Minimum leakage and high energy efficiency
- Cushioning pins on the pistons and enlarged air ducts in the profile covers enable high speeds and ideal pneumatic cushioning



### Advantage: reliability and long service life

- Scrapers and stainless steel cover strip provide optimal dust protection
- Pistons and slides in a single unit increase the rigidity and decrease machine downtimes
- Special sealing strip (steel wire reinforced polyurethane): extremely stable material prevents expansions that would interfere with the function



### Cylinder protection

Wear-free magn...  
exterior strip, sc...  
protect the cylin...  
make it dust and...  
increase its servi...

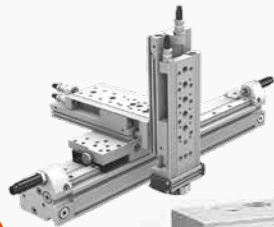




**Easy-2-Combine interface**  
Standardized mounting interfaces for direct connection of AVENTICS components. Less moving mass as no transition plates are required. Simplified machine design and reduced mounting effort.

**Air connections on both sides**  
Flexible mounting options thanks to free choice of air connections on both sides.

**Protection**  
Electrically attached scraper, and sealing strips under from exterior effects, dirt resistant, and long service life.



**Integrated mounting slots**  
Strong slots on both sides provide additional mounting options across the entire length.

**Oval piston**  
An oval piston design permits unusually high load and torque absorption, as well as ultra-compact machine designs.



**Compressed air connection indicators**  
Compressed air connection indicators in the end covers indicate the direction of movement.

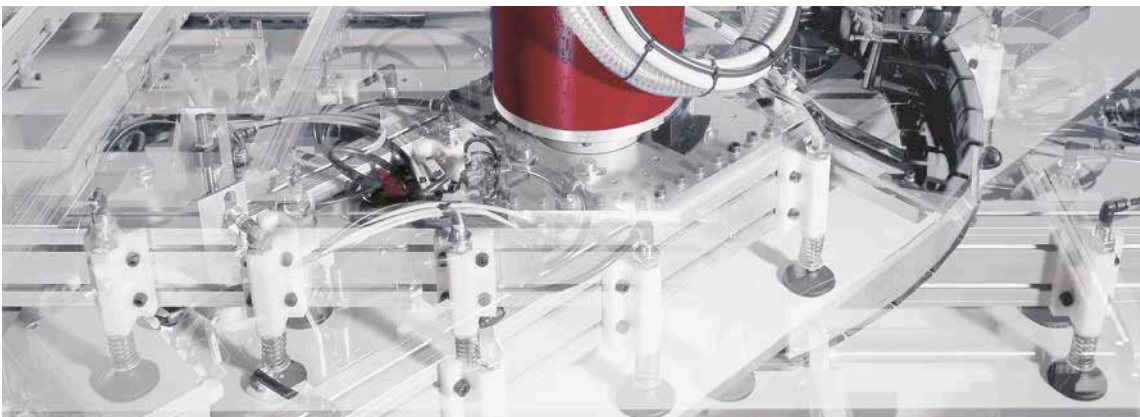
**Sensor slots on both sides**  
Sensors are visible and mountable from the top and the side. The special design allows mounting of two sensors in each slot, including an indentation for cables.

**Pneumatic cushioning**  
Adjustable pneumatic cushioning for precise and gentle operation.

RTC ports and strokes are also available in metric and inch.

Advantages at a glance – Elegant on the outside and the inside is even more impressive. All this is perfectly rounded off by practical configuration details. RTC.

The comprehensive range with many variants and options enables configurations that are individually tailored to the application



Rodless cylinder product range							
Ø mm	16	25	32	40	50	63	80
Series	Max. stroke in mm						
RTC-BV	6,600	7,000	9,900	9,900	9,900	5,600	4,800
RTC-SB		6,600	6,600	6,600	6,600		
RTC-CG	1,800	1,800	1,800	2,000			
RTC-HD	2,000	4,300	4,300	4,300	4,300	3,700	
CKP	1,800	1,800	3,700				
GSU	1,000	1,000					

### RTC application areas

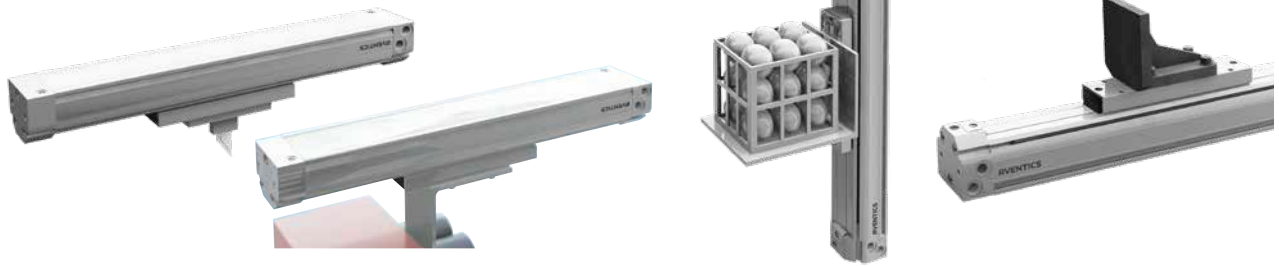
- Lifting/lowering, moving/guiding, pick&place
- Sorting, filling, painting
- Cutting

### RTC industry sectors

- Automotive industry, handling technology
- Machine construction, food industry
- Print and paper industry, wood processing industry
- Textile industry, railway industry

## Ideally suited for different handling applications

### RTC – Basic Version



**RTC-BV** – The RTC-BV is ideal for long horizontal stroke movements for conveying or cutting, whether as a high-speed cutting knife or for slow, smooth transporting. Freely configurable for vertical lifting and lowering of all types of containers and loads. Variable speeds and loads for diverse application areas.

## Practical configuration details

### Universal mountings



**Universal mountings** – The same mountings can be used for all variants. Cover mountings for the end covers. Foot mountings fitted in the side slots stabilize the profile for longer strokes.

### Compensating coupling



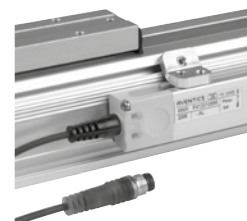
**Interim stop** – The multi-position solution enables more than one interim stop. In addition, travel can continue in the same direction following an interim stop.

### Cushioning



**Cushioning** – As standard, the cylinder is equipped with adjustable pneumatic cushioning that optimally absorbs the mass to be moved in relation to the process speed. Shock absorber add-on kits are available for extreme applications.

### Sensors ST4 and SM6-AL



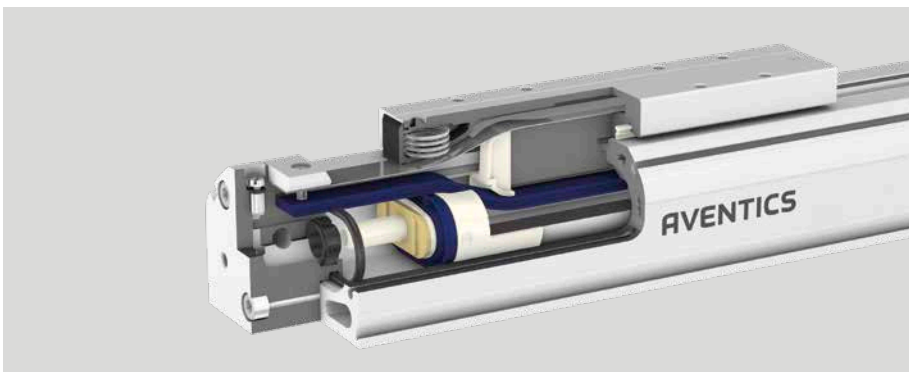
**Sensors ST4 and SM6-AL** – All of our series ST4 sensors can be used for the 4 mm slot. They can be quickly and flexibly integrated into the special sensor slots. The RTC can also be combined with sensors from the SM6-AL series to enable analog distance measurement.



For further information on these or any other AVENTICS product, visit [Emerson.com](https://www.emerson.com)







## RTC – oval piston, one-piece slide and piston unit, and a special interior sealing strip



**Emerson Automation Solutions  
Germany**  
**AVENTICS GmbH**  
Ulmer Straße 4  
30880 Laatzen, Germany  
Tel.+49 511 2136-522  
Fax+49 511 2136-163  
www.aventics.de

**Emerson Automation Solutions  
USA**  
**AVENTICS Corporation**  
PO Box 13597  
1953 Mercer Road (40511)  
Lexington, KY 40512  
Tel. +1 859 254-8031  
www.aventics.us

**Emerson Automation Solutions  
China**  
**AVENTICS Group**  
2002 Unit, Asdendas Plaza, No 333  
Tianyaoqiao Road, Xuhui district  
Shanghai, China, 200030  
Tel. +86 21 2426 9666  
www.aventics.cn

-  [Emerson.com/Aventics](https://www.emerson.com/aventics)
-  [Facebook.com/Aventics](https://www.facebook.com/aventics)
-  [LinkedIn.com/company/Aventics](https://www.linkedin.com/company/aventics)
-  [Twitter.com/Aventics](https://www.twitter.com/aventics)

The Emerson logo is a trademark and service mark of Emerson Electric Co. AVENTICS is a registered trademark of one of the Emerson family of companies. All other marks are the property of their respective owners. © 2019 Emerson Electric Co. All rights reserved.  
R500000091/ Printed in Germany / 06-19



**CONSIDER IT SOLVED™**