

SMART WIRELESS THUM™ ADAPTER

ROSEMOUNT MAGNETIC FLOWMETERS

Verify flowmeter performance inline on your schedule without external equipment

Magnetic flowmeters are typically used in some of the toughest and most critical flow applications in the process industry. Due to the nature of these applications, users have expressed a desire to access advanced diagnostic information, but historically, it has been difficult for them to get any information beyond flow rate. The Smart Wireless THUM adapter makes it easy to access all of the advanced diagnostics and measurement functionality available in Rosemount magnetic flowmeters:

- Internal meter verification diagnostic verifies performance over time which simplifies troubleshooting and flowmeter auditing.
- Grounding and wiring diagnostics accelerates startup by ensuring that the magnetic flowmeter is installed properly the first time.
- High process noise diagnostic reduces process variability by highlighting when a higher coil drive frequency will be able to improve a noisy output without having to apply damping.
- Totalized flow values from the magnetic flowmeter can be communicated via the THUM adapter without the need for any additional wiring or flow computer.

Rosemount Magnetic Flowmeter with the THUM adapter delivers more advanced field intelligence for better decision-making to help you achieve unparalleled efficiency and productivity.

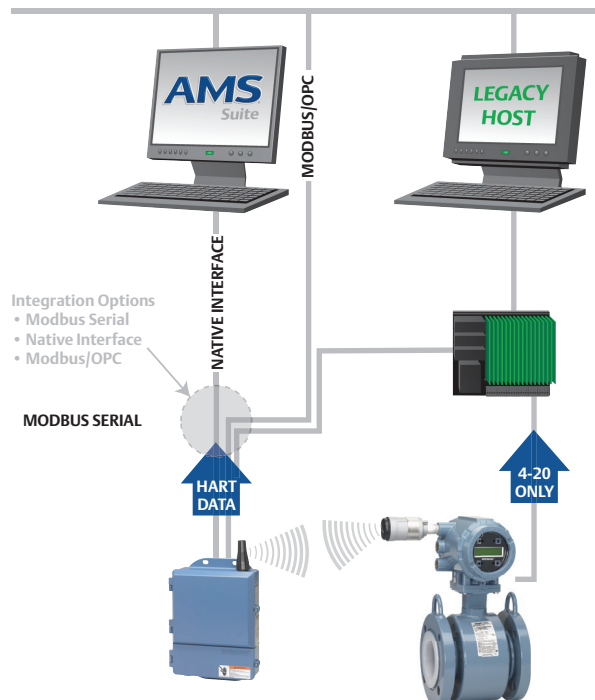


EASY TO USE. EASY TO INTEGRATE.

The THUM adapter allows you to wirelessly gain the full benefits of the Rosemount advanced diagnostics without the need for any additional software. All you need in addition to the THUM adapter is a Smart Wireless Gateway and a new or existing Rosemount magnetic transmitter.

All of Emerson's Smart Wireless field network devices can be integrated directly into your existing automation architecture without the need for upfront engineering, site surveys or additional software. Wired or wireless the network looks the same to your operators.

For additional ease of use, AMS® Suite: Intelligent Device Manager provides more convenient access to information that you don't have today. Emerson's Smart Wireless technologies put valuable information within reach – easily and cost effectively – to give you better insights into what's happening in your operation.



Can advanced diagnostics and the THUM adapter tell me when my pipe is empty?

Yes, the THUM adapter can provide annunciation of empty pipe diagnostic.

Can I complete a full meter verification of my device without a trip to the field by using the THUM adapter?

Yes, a complete verification of the meter can be completed remotely without any additional equipment.

Can I use my Rosemount magnetic flowmeter with the THUM adapter to access Rosemount diagnostics on another manufacturer's magnetic flowmeter sensor?

Rosemount magnetic flowmeters have universal functionality, the advanced diagnostics can be used with any manufacturer's sensors.

BETTER INFORMATION FOR IMPROVED PERFORMANCE

The THUM adapter can transmit up to four variables and additional HART status information at the user configurable update rate. Access to this new information enables you to more fully optimize your operations for improved performance.

Selected Variables

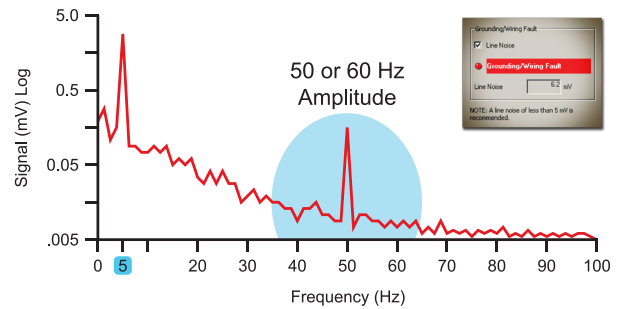
Flow Totalized Flow

Important Status Information

Meter Verification	Universal Diagnostics
Empty Pipe	Zero Flow
Reverse Flow	Electronics Temperature
Device Alerts	Ground and Wiring Diagnostic
Process Alerts	High Process Noise Diagnostic

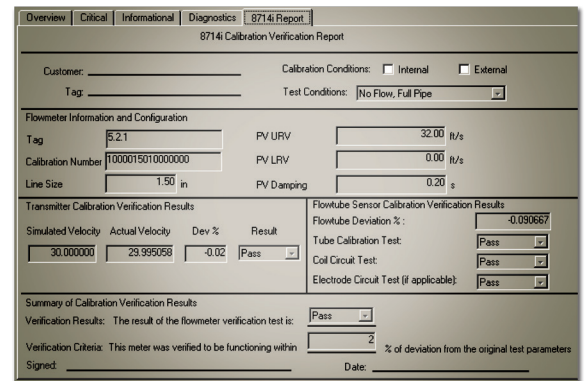
TECHNICAL REQUIREMENTS

Voltage drop across THUM adapter: 2.25 Volts at 3.5 mA; 1 Volt at 25 mA
 Loop resistance required: 250 Ohms
 THUM adapter update rate: 8 seconds to 60 minutes



Simplify installation

Improper grounding is the most common installation issue with magnetic flowmeters. By monitoring the 50/60 Hz noise amplitude, the patented ground and wiring fault detection on the Rosemount magnetic flowmeters diagnostic can quickly verify if your installation is correct. Now, no matter who installs your meter, getting it right is easy.



Reduce maintenance and troubleshooting

With Emerson meter verification you can confirm the health of the entire flowmeter - both transmitter and sensor - without the need for additional external equipment. It's no longer necessary to remove the sensor from the line or use costly and time consuming specialized equipment to verify a meter's performance.

©2013 Emerson Process Management. All rights reserved.

The Emerson logo is a trademark and service mark of Emerson Electric Co. Rosemount is a mark of one of the Emerson Process Management family of companies. All other marks are property of their respective owners. The contents of this publication are presented for information purposes only, and while effort has been made to ensure their accuracy, they are not to be construed as warranties or guarantees, express or implied, regarding the products or service described wherein or their use or applicability. All sales are governed by our terms and conditions, which are available on request. We reserve the right to modify or improve the designs or specifications of our products at any time without notice.

**Emerson Process Management
Rosemount Inc.**
 8200 Market Boulevard
 Chanhassen, MN 55317 USA
 T (U.S.) 1+ 800 522 6277
 T (International) +1 (303) 527 5200
 F +1 (303) 530 8459
 www.rosemount.com

**Emerson Process Management
Flow**
 Neonstraat 1
 6718 WX Ede
 The Netherlands
 Tel +31 (0) 318 495 555
 Fax +31(0) 318 495 556

Emerson FZE
 P.O. Box 17033
 Jebel Ali Free Zone
 Dubai UAE
 Tel +971 4 811 8100
 Fax +971 4 886 5465

**Emerson Process Management Asia
Pacific Pte Ltd**
 1 Pandan Crescent
 Singapore 128461
 Tel +65 6777 8211
 Fax +65 6777 0947
 Service Support Hotline : +65 6770 8711
 Email : Enquiries@AP.EmersonProcess.com