

SMART WIRELESS THUM™ ADAPTER

ROSEMOUNT VORTEX FLOWMETERS

WirelessHART

Get more from your Rosemount MultiVariable™ Vortex Flowmeter

The Rosemount MultiVariable™ Vortex Flowmeter is specifically designed to deliver more process information than previously available in vortex flowmeters. The Smart Wireless THUM adapter makes it easy to access all of the additional process information available in the Rosemount Vortex Flowmeter:

- MultiVariable capability delivers compensated mass flow, volumetric flow, and a temperature measurement.
- Remote flow simulation without any additional hardware verifies electronics performance over time which simplifies troubleshooting and flowmeter auditing.
- Flowmeter diagnostics including indication of the temperature sensor health can easily be accessed using the Smart Wireless THUM adapter.
- Totalized flow values from the Rosemount vortex flowmeter can be communicated via the Smart Wireless THUM without the need for any additional wiring or flow computer.



The Rosemount MultiVariable Vortex Flowmeter with the Smart Wireless THUM adapter powers the PlantWeb® digital plant architecture by delivering more advanced field intelligence for better decision-making to help you achieve unparalleled efficiency and productivity.

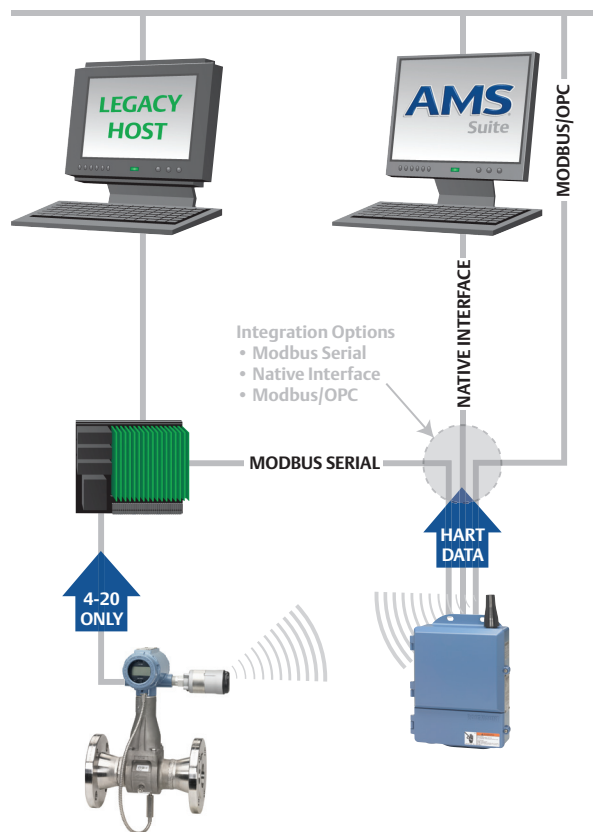


EASY TO USE. EASY TO INTEGRATE.

The Smart Wireless THUM adapter allows you to wirelessly access the full range of information available in the Rosemount MultiVariable vortex flowmeter. All you need in addition to the THUM is a Smart Wireless Gateway and a new or existing Rosemount Vortex Flowmeter.

All of Emerson's Smart Wireless field network devices can be integrated directly into your existing automation architecture without the need for upfront engineering, site surveys or additional software. Wired or wireless the network looks the same to your operators.

For additional ease of use, the AMS® Suite: Intelligent Device Manager provides more convenient access to information that you don't have today. Emerson's Smart Wireless technologies put valuable information within reach – easily and cost effectively – to give you better insights into what's happening in your operation.



Can I use the 4-20mA to transmit the mass flow information and use the THUM to communicate the process temperature?

Yes, the THUM can provide the temperature measurement from the temperature sensor in the flowmeter.

Can I locally power my vortex meter that is used for totalization to save wiring costs and wirelessly communicate the totalized value?

Yes, instantaneously totalized values can be communicated via the THUM.

Can I use the THUM to access the flow simulation feature for meter verification without having to make a trip to the meter?

Electronics verification can be fully completed remotely by using the THUM.

ROSEMOUNT®


EMERSON™
Process Management

BETTER INFORMATION FOR IMPROVED PERFORMANCE

The Smart Wireless THUM adapter can transmit up to four variables and additional HART status information at the user configurable update rate. Access to this new information enables you to more fully optimize your operations for improved performance.

Selectable Variables

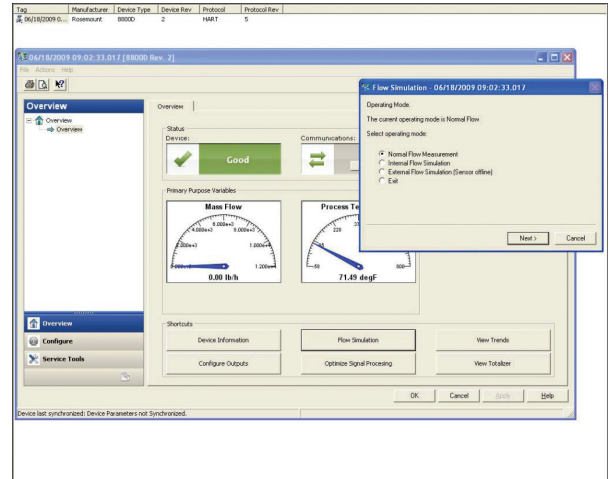
- Mass Flow
- Volumetric Flow
- Temperature Measurement
- Totalized Flow
- Density

Important Status Information

- Electronics Temperature
- Electronics Verification
- Signal to Trigger Diagnostic (Signal Strength)
- Device Alerts
- Process Alerts

TECHNICAL REQUIREMENTS

- Voltage drop across THUM: 2.25 Volts at 3.5 mA; 1 Volt at 25 mA
- Loop resistance required: 250 Ohms
- Power requirements: 14.5 Volts
- THUM update rate: 16 seconds to 60 minutes



Easy Verification Reduces Maintenance Costs

With Rosemount vortex flowmeters users can internally verify the meter calibration by utilizing PlantWeb® diagnostics. An internal signal generator can be accessed with a 375 Field Communicator or AMS® Suite: Device Manager, so no separate equipment is needed.

©2009 Emerson Process Management. All rights reserved.

The Emerson logo is a trademark and service mark of Emerson Electric Co. Rosemount is a mark of one of the Emerson Process Management family of companies. PlantWeb is a registered trademark of the Emerson Process Management group of companies. All other marks are property of their respective owners. The contents of this publication are presented for information purposes only, and while effort has been made to ensure their accuracy, they are not to be construed as warranties or guarantees, express or implied, regarding the products or service described wherein or their use or applicability. All sales are governed by our terms and conditions, which are available on request. We reserve the right to modify or improve the designs or specifications of our products at any time without notice.

**Emerson Process Management
Rosemount Inc.**
8200 Market Boulevard
Chanhassen, MN 55317 USA
T (U.S.) 1-800-999-9307
T (International) (952) 906 8888
F (952) 949 7001
www.rosemount.com

**Emerson Process Management
Flow**
Neonstraat 1
6718 WX Ede
The Netherlands
Tel +31 (0) 318 495 555
Fax +31(0) 318 495 556

Emerson FZE
P.O. Box 17033
Jebel Ali Free Zone
Dubai UAE
Tel +971 4 811 8100
Fax +971 4 886 5465

**Emerson Process Management Asia
Pacific Pte Ltd**
1 Pandan Crescent
Singapore 128461
Tel +65 6777 8211
Fax +65 6777 0947
Service Support Hotline : +65 6770 8711
Email : Enquiries@AP.EmersonProcess.com