

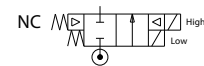
Solenoid Valves

Pilot Operated, dual flow, piston, for petrol vending, 1"

SERIES
292

Features

- Compact aluminium flanged bodied dual flow valves for petrol vending applications
- Minimum operating differential pressure 0,35 bar
- Explosion proof operators, intended for use in potential explosive areas, according to Directive ATEX 94/9/EC
- Easy electrical installation by means of the moulded-in supply cable, standard length 2 meter
- ASCO components satisfy all relevant EC directives
- Applicable for high ethanol blending application
- Suitable for low ambient -40°C



Construction

| Materials in Contact with Fluids | |
|----------------------------------|-----------------|
| Body | Aluminium |
| Core tube | Stainless Steel |
| Core and plugnut | Stainless Steel |
| Springs | Stainless Steel |
| Shading Coil | Copper |
| Disc & O-Rings | FPM |
| Piston | PPS |

General

Differential Pressure: 0.35–3.5bar for low flow
0.35–4bar for high flow

Ambient temperature range: AC: -40 to +65°C
DC: -40 to +40°C

| Fluids (*) | Temperature range (TS) | Seal materials (*) |
|-----------------------|------------------------|--------------------|
| Petrol & Liquid fuels | -40 to +60°C | FPM |

(*) Ensure that the compatibility of the fluids in contact with the materials is verified

Electrical

Coil insulation class : F
Electrical safety: IEC 335
Standard voltages DC (≐) 24V – 48V;
AC (~) 24V – 48V – 115V – 230V / 50 Hz.

| Prefix option | Power ratings | | Operator ambient temperature range (TS) (C°) | Safety Code | Electrical enclosure protection (EN 60529) | Replacement coil | | Type ⁽¹⁾ |
|---------------|---------------|------------|--|--------------------|--|------------------|--------|---------------------|
| | holding ~ | hot/cold = | | | | ~ | = | |
| PV | W | W | -40 to +40/65 | II 2 G Ex mb II T3 | moulded IP67 | 230V/50/60 Hz | 24V/DC | 01 |
| | 4,0 | 5,0 / 6,9 | | | | - | (2) | |

Specifications

| Pipe Size | Orifice Size | | Flow Coefficient Kv | | Operating pressure differential (bar) | | | Prefix | Basic catalogue number |
|-----------------------------|--------------|-----------|---------------------|-------------|---------------------------------------|--------------|-------------|------------|------------------------|
| | Low (mm) | High (mm) | Low (m3/h) | High (m3/h) | Min | Max Pressure | | ATEX/IECEX | |
| T | | | | | | ~ | = | Ex mb | |
| PV | | | | | | | | | |
| NC – Normally closed | | | | | | | | | |
| 1" | 2.5 | 20 | 0.12 | 5.7 | LF/HF 0.35 | LF 3.5 HF 6 | LF 3.5 HF 6 | • | T292C21X |

• Available feature – Not available

Product Selection Guide

Product Code

T 292 C 211 A7 V00 F1

Connection Type ← T = Flange Connection

Product Series ← 292 = 2 Pilot Operated/Dual Flow Valve

Revision ← C = Revision

Item ←

| | Port size | Function | Construction | Media Handled | AC Watts | DC Watts |
|-------|-----------|----------|--------------|---|----------|----------|
| 211 = | 1" | NC | Piston | Ethanol/Gasoline Blends up to 15% | 4 | 6.9 |
| 212 = | 1" | NC | Piston | Ethanol/Gasoline Blends > 15% Ethanol including E85 | 4 | 6.9 |

Electrical Connection Type

X3 = 2.25 m Leaded Coil
X4 = 2.75 m Leaded Coil
X5 = 4 m Leaded Coil

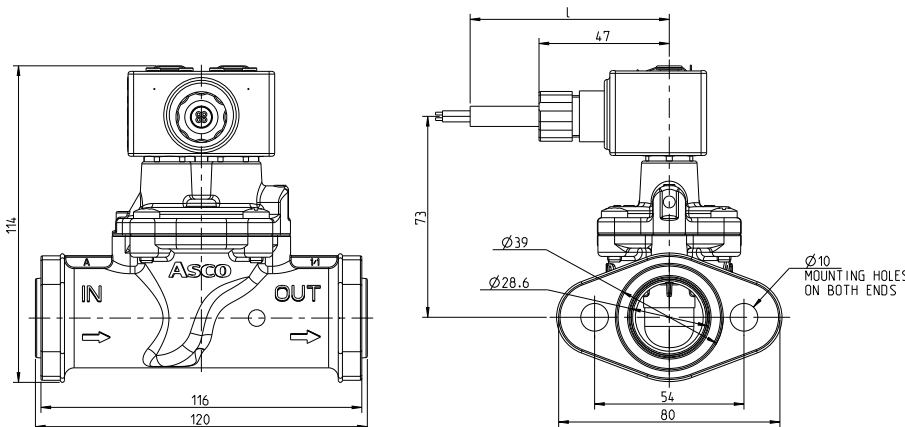
Options
V00 = FPM Seal & ATEX

Voltage
F1 = 24 VDC
FH = 230/50-60 AC

Installation

- The valves can be mounted in any position without affecting operation
- Installation/maintenance instructions are included with each valve
- Screw and gasket are not included

Dimensions (mm)



TYPE 01

Prefix "PV" Solenoid
Epoxy encapsulated
EN-IEC 60079-0, 60079-18, 61241-0, 61241-18
II 2 G/D Ex mb II / Ex mD
IP67

