

Pressure regulators, Series M Plus™



AVENTICS™ Pressure regulators, Series M Plus™

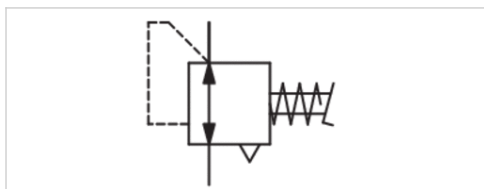


Pressure regulators, Series M Plus™

- Valve foot pedal, M-1
- Qn = 200 l/min
- Poppet valve



Version	Poppet valve
Working pressure min./max.	0 ... 10.3 bar
Adjustment range min./max.	See table below
Ambient temperature min./max.	-40 ... 71 °C
Medium temperature min./max.	-40 ... 71 °C
Medium	Compressed air
Max. particle size	50 µm
Oil content of compressed air	0 ... 1 mg/m ³
Nominal flow Qn	200 l/min
Weight	0.75 kg

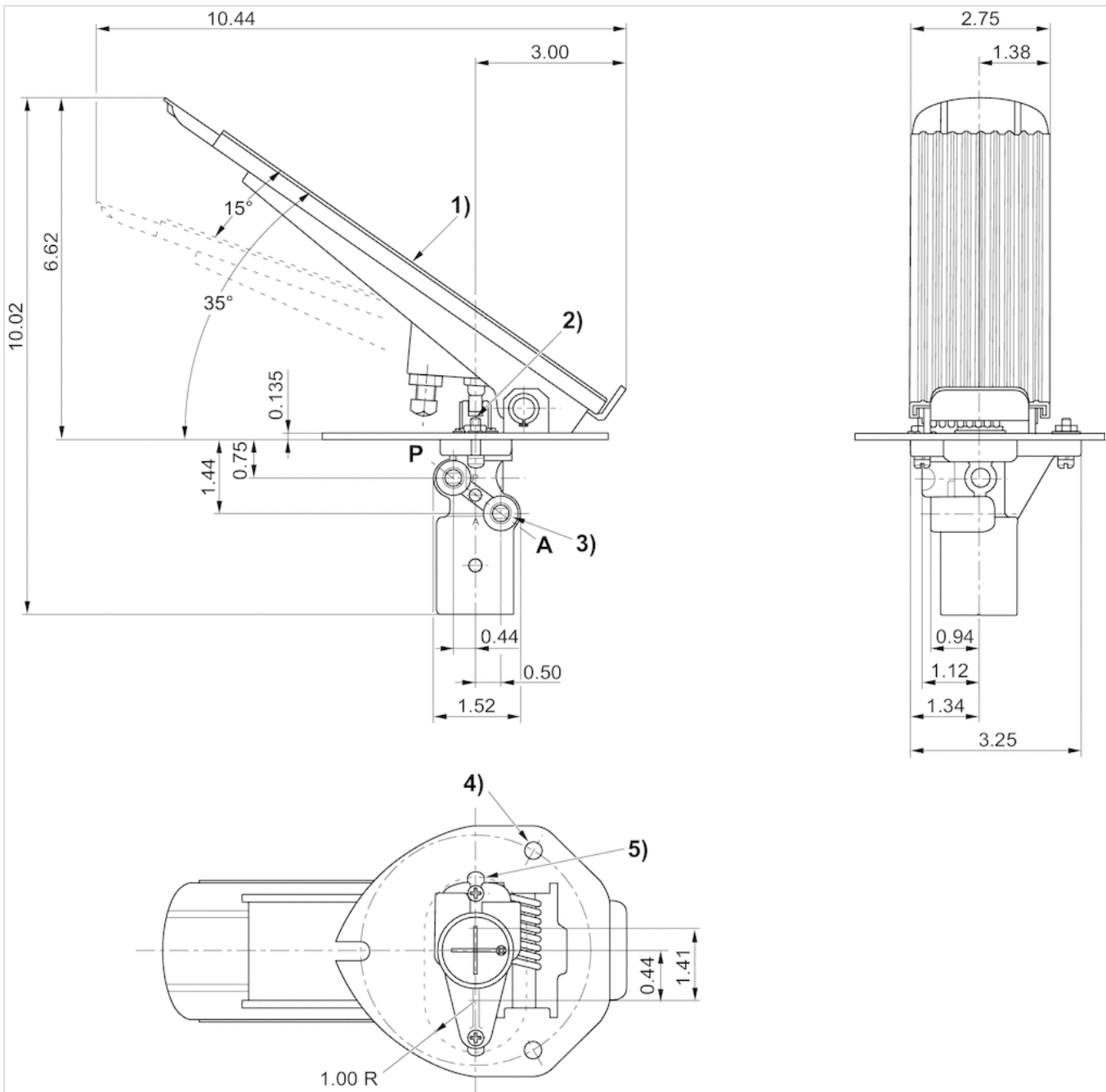


Technical data

Part No.	Compressed air connection Input	Compressed air connection Output	Adjustment range min./max.
R431000662	1/8-27 NPTF	1/8-27 NPTF	0 ... 4.1 bar
R431000663	1/8-27 NPTF	1/8-27 NPTF	0 ... 6.8 bar

Dimensions

Dimensions in inches



- 1) Pedal
- 2) Exhaust
- 3) 1/8-27 NPTF
- 4) 0.34 diameter through 3 places equally spaced on a 4.50 diameter between centers.
- 5) panel mounting hole

Pressure regulators, Series M Plus™

- Qn = 200 l/min
- Poppet valve
- M-2 Spring Returned handle M-2-F Friction retained handle



Version	Poppet valve
Working pressure min./max.	0 ... 10.3 bar
Adjustment range min./max.	See table below
Ambient temperature min./max.	-40 ... 71 °C
Medium temperature min./max.	-40 ... 71 °C
Medium	Compressed air
Max. particle size	50 µm
Oil content of compressed air	0 ... 1 mg/m ³
Nominal flow Qn	200 l/min
Weight	0.75 kg

Technical data

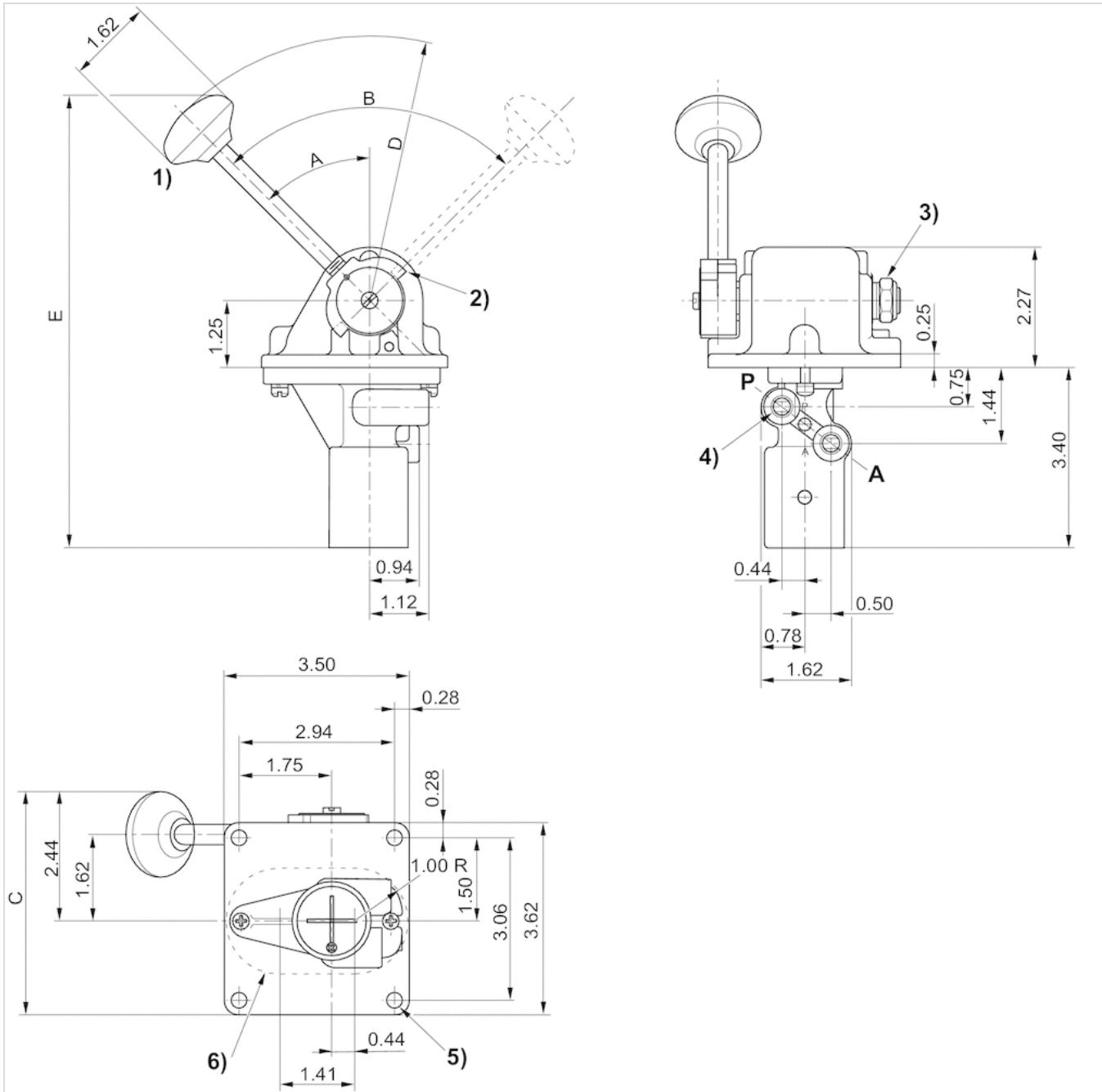
Part No.		Version	Compressed air connection Input
R431000656		M-2 Spring Returned handle	1/8-27 NPTF
R431000657		M-2 Spring Returned handle	1/8-27 NPTF
R431003201		M-2 Spring Returned handle	1/8-27 NPTF
R431000659		M-2-F Friction retained handle	1/8-27 NPTF
R431000660		M-2-F Friction retained handle	1/8-27 NPTF
R431003192		M-2-F Friction retained handle	1/8-27 NPTF
R431000661		M-2-F Friction retained handle	1/8-27 NPTF

Part No.	Compressed air connection Output	Adjustment range min./max.	
R431000656	1/8-27 NPTF	0 ... 4.1 bar	1)
R431000657	1/8-27 NPTF	0 ... 6.8 bar	1)
R431003201	1/8-27 NPTF	0 ... 8.6 bar	1)
R431000659	1/8-27 NPTF	0 ... 4.1 bar	2)
R431000660	1/8-27 NPTF	0 ... 6.8 bar	2)
R431003192	1/8-27 NPTF	0 ... 8.6 bar	2)
R431000661	1/8-27 NPTF	0 ... 4.1 bar	2)

- 1) Lever returns to minimum pressure position when released.
- 2) Lever remains in position where released . Holding friction is adjustable

Dimensions

Dimensions in inches



- 1) With hand lever, normally closed
- 2) Yoke reversed for preload pressure range
- 3) Friction brake adjustment
- 4) 0.281 diameter (4) places
- 5) panel mounting hole

Pressure regulators, Series M Plus™

- Qn = 200 l/min
- Poppet valve
- M-5



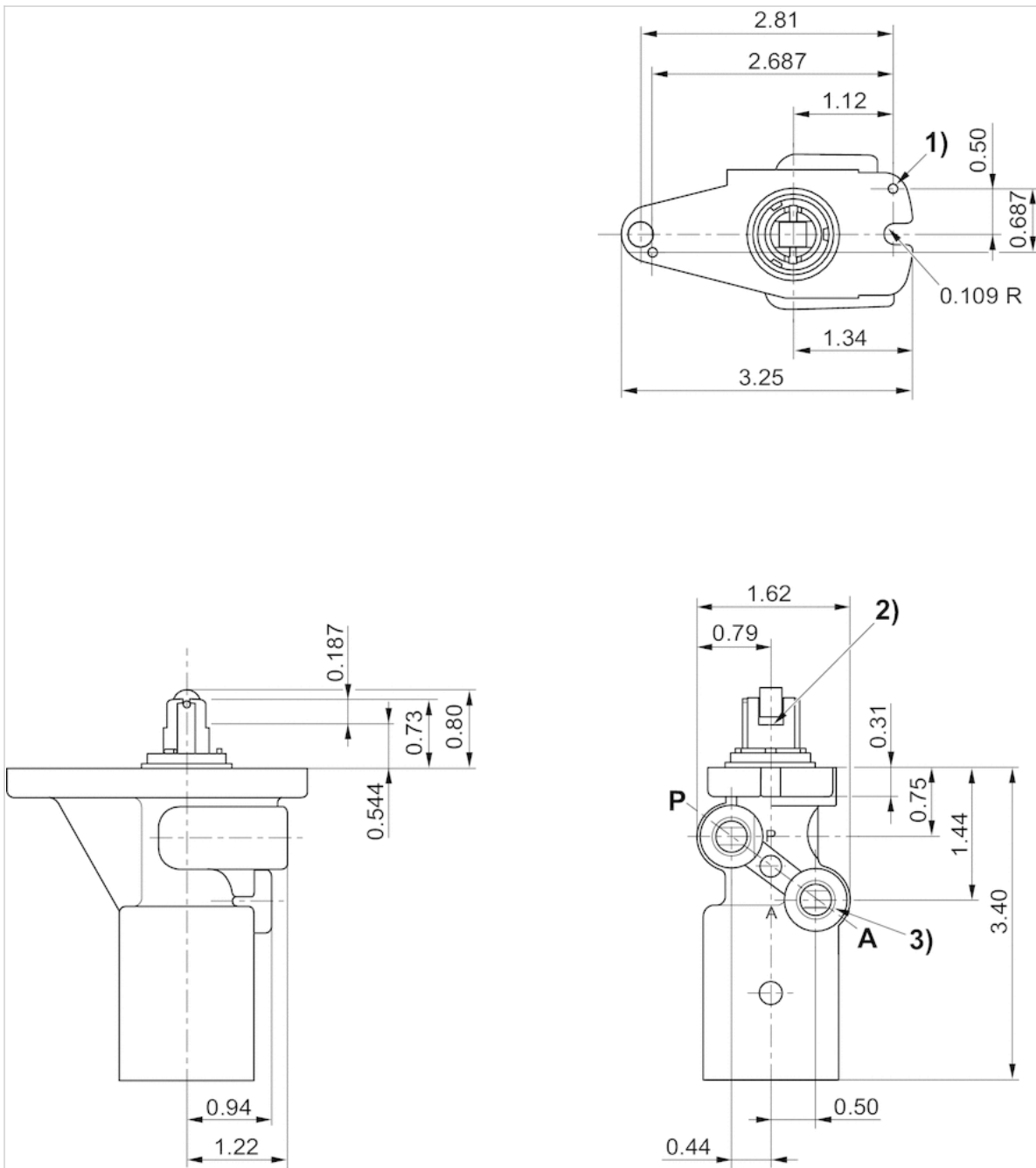
Version	Poppet valve
Working pressure min./max.	0 ... 10.3 bar
Adjustment range min./max.	See table below
Ambient temperature min./max.	-40 ... 71 °C
Medium temperature min./max.	-40 ... 71 °C
Medium	Compressed air
Max. particle size	50 µm
Oil content of compressed air	0 ... 1 mg/m ³
Nominal flow Qn	200 l/min
Weight	0.75 kg

Technical data

Part No.	Compressed air connection Input	Compressed air connection Output	Adjustment range min./max.
R431000666	1/8-27 NPTF	1/8-27 NPTF	0 ... 4.1 bar
R431000667	1/8-27 NPTF	1/8-27 NPTF	0 ... 6.9 bar

Dimensions

Dimensions in inches



- 1) 0.90 diameter (2) places, 0.06 deep
- 2) Exhaust
- 3) 1/8-27 NPTF

Pressure regulators, Series M Plus™

- MC-2, MC-2-F
- Poppet valve
- MC-2 MC-2-F



Version	Poppet valve
Working pressure min./max.	0 ... 10.3 bar
Adjustment range min./max.	See table below
Ambient temperature min./max.	-40 ... 71 °C
Medium temperature min./max.	-40 ... 71 °C
Medium	Compressed air
Max. particle size	50 µm
Oil content of compressed air	0 ... 1 mg/m ³
Weight	1.2 kg

Technical data

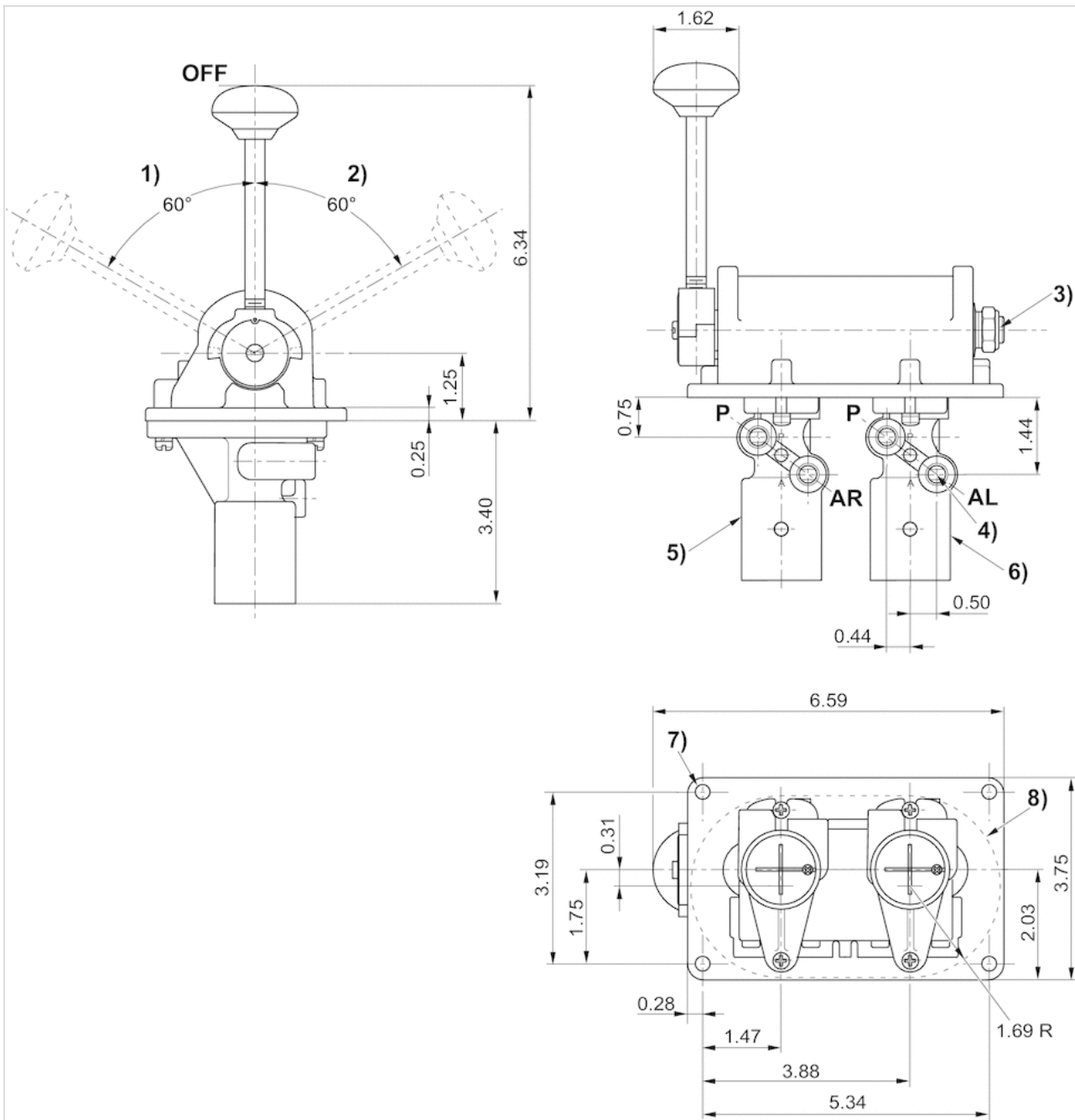
Part No.	Version	Compressed air connection Input	Compressed air connection Output	Adjustment range min./max.	
R431000670	MC-2	1/8-27 NPTF	1/8-27 NPTF	0 ... 4.1 bar	1)
R431000671	MC-2	1/8-27 NPTF	1/8-27 NPTF	0 ... 6.9 bar	1)
R431000668	MC-2-F	1/8-27 NPTF	1/8-27 NPTF	0 ... 4.1 bar	2)
R431000669	MC-2-F	1/8-27 NPTF	1/8-27 NPTF	0 ... 6.9 bar	2)

1) Lever automatically returns to "Off" position when released.

2) Lever remains in the position when released.

Dimensions

Dimensions in inches



- 1) Valve # 1, 2) Valve # 2
- 3) Friction brake adjustment
- 4) 1/8-27 NPTF
- 5) Valve # 1, 6) Valve # 2
- 7) 0.281 diameter (4) places
- 8) panel mounting hole

Pressure regulators, Series M Plus™

- ME-2, ME-2-F
- Poppet valve
- ME-2 ME-2-F



Version	Poppet valve
Adjustment range min./max.	See table below
Ambient temperature min./max.	-40 ... 71 °C
Medium temperature min./max.	-40 ... 71 °C
Medium	Compressed air
Max. particle size	50 µm
Oil content of compressed air	0 ... 1 mg/m ³
Weight	1.2 kg

Technical data

Part No.	Version	Compressed air connection Input	Compressed air connection Output	Adjustment range min./max.	
R431009137	ME-2	1/8-27 NPTF	1/8-27 NPTF	0 ... 4.1 bar	1)
R431000674	ME-2	1/8-27 NPTF	1/8-27 NPTF	0 ... 6.9 bar	1)
R431000673	ME-2-F	1/8-27 NPTF	1/8-27 NPTF	0 ... 6.9 bar	2)

1) Lever automatically returns to "Off" position when released.

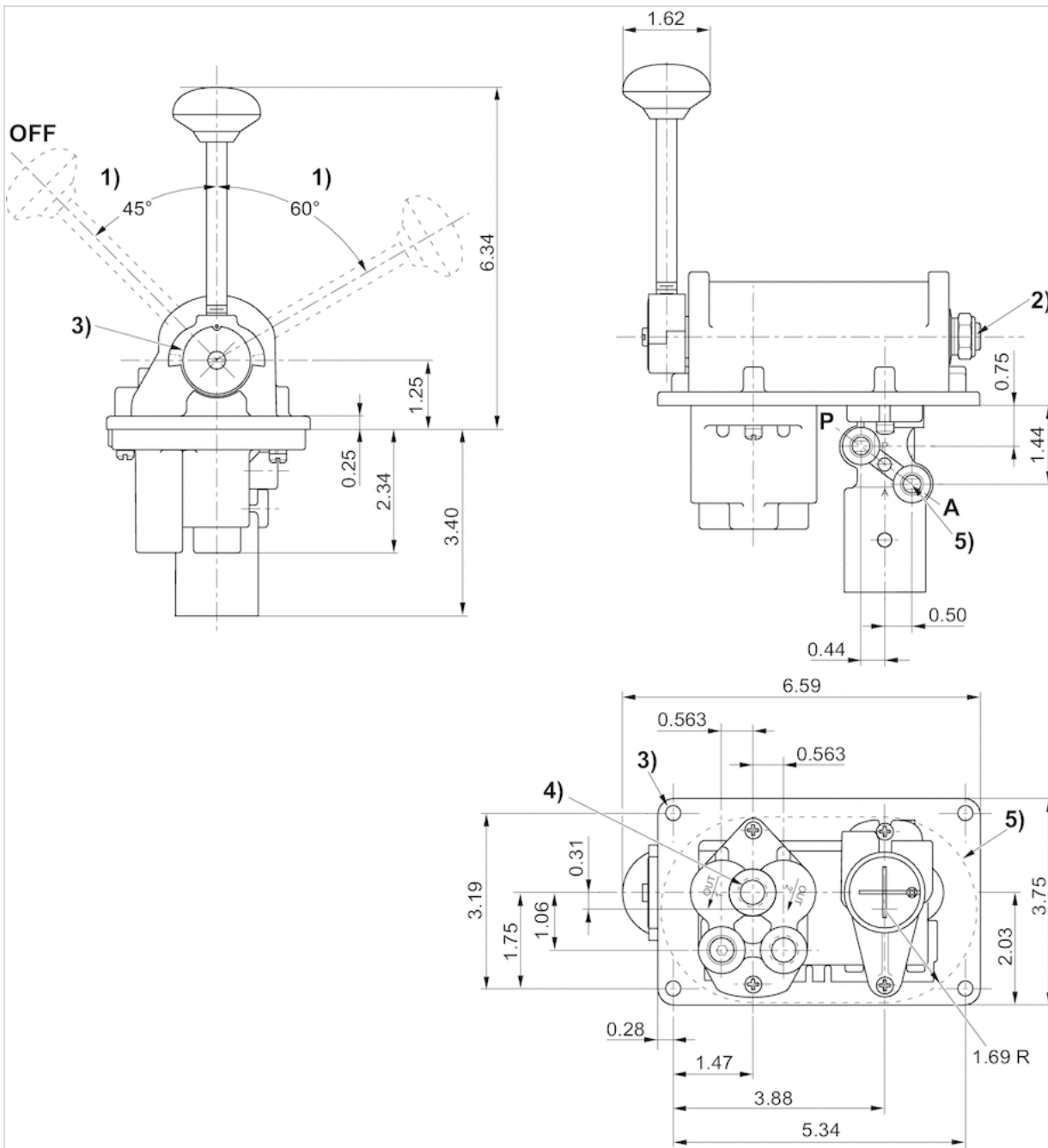
2) Lever remains in the position when released.

Technical information

The M-2 Valve is a lever-operated, 3-way pressure regulating valve. Output pressure is increased, decreased, or maintained at the out port according to lever position. Facing the lever side of the valve, clockwise lever movement increases pressure. Outlet pressure is maintained for the position in which the lever remains.

Dimensions

Dimensions in inches



- 1) Pressure range
- 2) Friction brake adjustment
- 3) 0.281 diameter (4) places
- 4) 1/4 - 18 NPTF
- 5) panel mounting hole

Efficient pneumatic solutions, our program: cylinders and drives, valves and valve systems, air supply management



Visit us: Emerson.com/Aventics

Your local contact: Emerson.com/contactus



Emerson.com



[Facebook.com/EmersonAutomationSolutions](https://www.facebook.com/EmersonAutomationSolutions)



[LinkedIn.com/company/Emerson-Automation-Solutions](https://www.linkedin.com/company/Emerson-Automation-Solutions)



[Twitter.com/EMR_Automation](https://twitter.com/EMR_Automation)

An example configuration is depicted on the title page. The delivered product may thus vary from that in the illustration. Subject to change. This Document, as well as the data, specifications and other information set forth in it, are the exclusive property of AVENTICS GmbH. It may not be reproduced or given to third parties without its consent. Only use the AVENTICS products shown in industrial applications. Read the product documentation completely and carefully before using the product. Observe the applicable regulations and laws of the respective country. When integrating the product into applications, note the system manufacturer's specifications for safe use of the product. The data specified only serve to describe the product. No statements concerning a certain condition or suitability for a certain application can be derived from our information. The information given does not release the user from the obligation of own judgment and verification. It must be remembered that the products are subject to a natural process of wear and aging.

The Emerson logo is a trademark and service mark of Emerson Electric Co. Brand logotype are registered trademarks of one of the Emerson family of companies. All other marks are the property of their respective owners. © 2017 Emerson Electric Co. All rights reserved.
2019-03



CONSIDER IT SOLVED™