

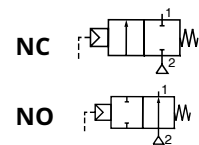
## General Features

- Stainless steel body and flange from single casting for high mechanical & chemical integrity.
- Ruggedly built, particularly recommended for :
  - use with superheated water and steam, up to max. 230°C.
  - high ambient temperatures, up to 140°C.
- Valves for operation under very harsh conditions with good resistance to thermal shock (steam followed by cold water cycles).
- Compact design reduce installation space and cost.
- Reliable control in low pressure applications.
- High-performance maintenance-free stuffing box.
- Optimised fluid flow geometry allowing high flow rates.

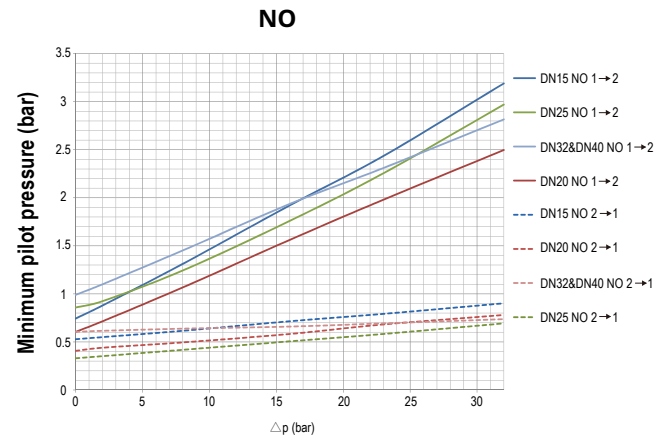
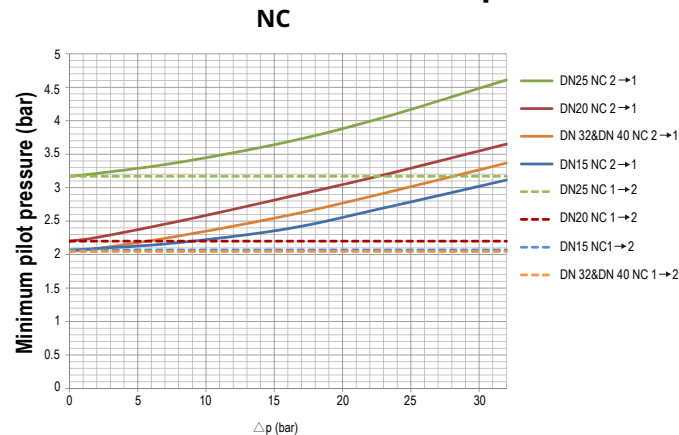


## Technical Features

<b>Fluids (*)</b>	air and gas, water, oil, liquids and steam
<b>Temperature range (TS)</b>	- 30°C to + 230°C
<b>Differential pressure</b>	0 to 32 bar [1 bar =100 kPa]
<b>Maximum allowable pressure</b>	40 bar
<b>Ambient temperature range</b>	-25°C to +140°C
<b>Maximum viscosity</b>	5000 cSt (mm <sup>2</sup> /s)
<b>Pilot fluid</b>	Air
<b>Max. pilot pressure</b>	10 bar



## Characteristic Pilot Control Graph



## Materials in Contact with Fluid

(\*) Ensure that the compatibility of the fluids in contact with the materials is verified

<b>Valve body</b>	Stainless steel
<b>Stem, disc</b>	Stainless steel
<b>Stuffing box packing</b>	PTFE
<b>Disc seal</b>	PEEK
<b>Valve body seal</b>	Red copper

## Other Materials

<b>Operator head</b>	Aluminium, nickel plated
----------------------	--------------------------

## Construction

<b>Connection</b>	Flange DIN PN40 type 21, EN1092-1 (ISO 7005) JIS B2220, 20K GB 9119, 2-88
-------------------	---

## Specifications

Pipe Size	DN	Flow Coefficient Kv		Max. Differential Pressure (bar)	Pilot Pressure (bar)		Operator Diameter (mm)	Catalog Number	
		(m <sup>3</sup> /h)	(l/min)		min.	max.		DIN/GB <sup>(1)</sup>	JIS 20K
<b>NC - Normally closed</b>									
Flanges	15	4.5	75	32	❖	10	80	Q117BT37DTA0000	Q117BT37JTA0000
	20	7.2	120	32	❖	10	100	Q117BT4FDTA0000	Q117BT4FJTA0000
	25	12	200	32	❖	10	100	Q117BT5FDTA0000	Q117BT5FJTA0000
	32	18	300	32	❖	10	150	Q117BT6KDTA0000	Q117BT6KJTA0000
	40	23	383	32	❖	10	150	Q117BT7KDTA0000	Q117BT7KJTA0000
<b>NO - Normally open</b>									
Flanges	15	4.5	75	32	❖	10	80	Q217BT37DTA0000	Q217BT37JTA0000
	20	7.2	120	32	❖	10	100	Q217BT4FDTA0000	Q217BT4FJTA0000
	25	12	200	32	❖	10	100	Q217BT5FDTA0000	Q217BT5FJTA0000
	32	18	300	32	❖	10	150	Q217BT6KDTA0000	Q217BT6KJTA0000
	40	23	383	32	❖	10	150	Q217BT7KDTA0000	Q217BT7KJTA0000

**Notes**

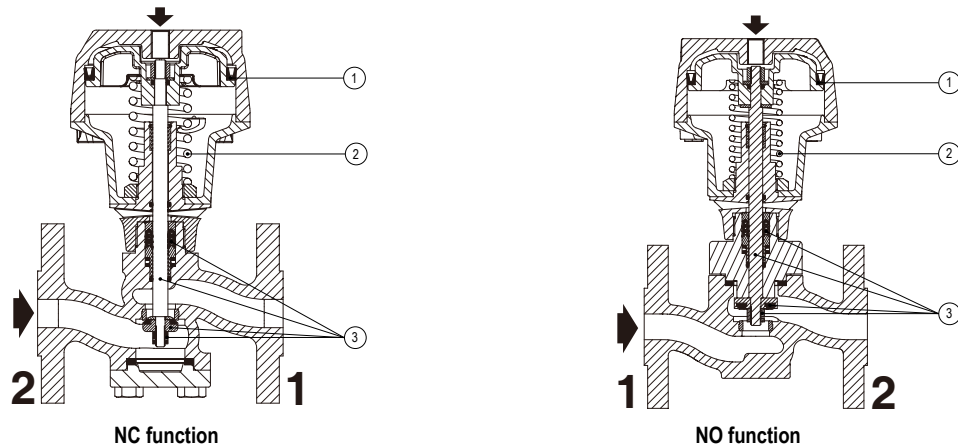
(1) Adapt plate required for GB flange connection in order to match face to face distance.

❖ Minimum pilot pressure varies with differential pressure. See characteristic pilot control graph.

## Installation

- Valves can be mounted in any position, but vertical is recommended

## Spare Parts



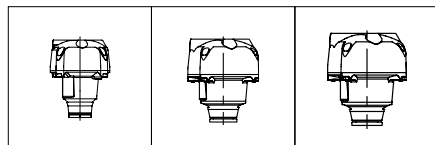
Catalog Number	Spare Parts Kit No.		
	Piston Seal ①	Actuator Spring ②	Stem, Disc, Seals ③
Q117BT37DTA0000/Q117BT37JTA0000	M200144A00	M200156A00	M200204A00
Q117BT4FDTA0000/Q117BT4FJTA0000	M200145A00	M200157A00	M200205A00
Q117BT5FDTA0000/Q117BT5FJTA0000	M200145A00	M200158A00	M200206A00
Q117BT6KDTA0000/Q117BT6KJTA0000	M200147A00	M200159A00	M200207A00
Q117BT7KDTA0000/Q117BT7KJTA0000	M200147A00	M200159A00	M200207A00
Q217BT37DTA0000/Q217BT37JTA0000	M200144A00	M200170A00	M200216A00
Q217BT4FDTA0000/Q217BT4FJTA0000	M200145A00	M200170A00	M200217A00
Q217BT5FDTA0000/Q217BT5FJTA0000	M200145A00	M200170A00	M200218A00
Q217BT6KDTA0000/Q217BT6KJTA0000	M200147A00	M200171A00	M200219A00
Q217BT7KDTA0000/Q217BT7KJTA0000	M200147A00	M200171A00	M200169A00

## Ordering Examples

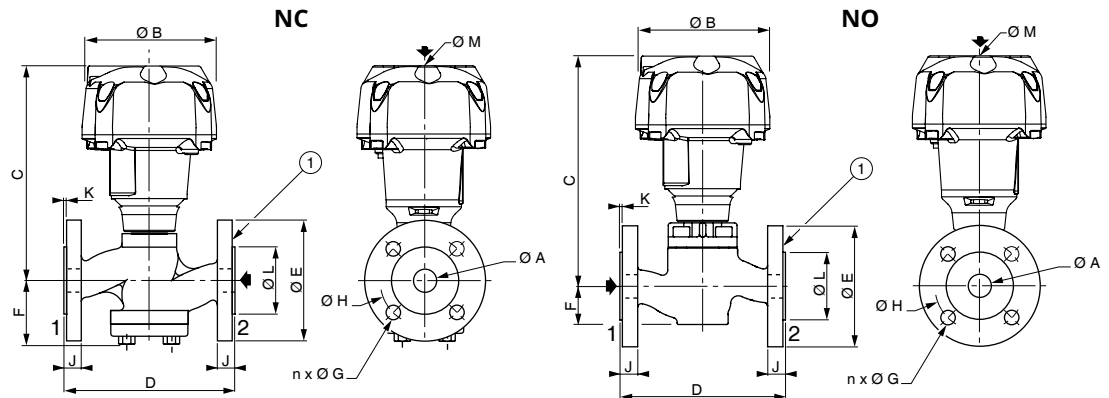
**Product Series** Q117 B T 3 7 D T A00 00 **Voltage**  
**Q117** = 2 way Steam Valve Normally Closed  
**Q217** = 2 way Steam Valve Normally Open  
**Revision**  
**B** = Second Release  
**Connection Type**  
**T** = Flange  
**Nominal Diameter**  
**3** = 15mm  
**4** = 20mm  
**5** = 25mm  
**6** = 32mm  
**7** = 40mm  
**Operator Dia - Piloting Connection Dia**  
**7** = Ø80mm - G1/8"  
**F** = Ø100mm - G1/4"  
**K** = Ø150mm - G1/4"

**Options**  
**A00** = Standard PEEK Disc Seal  
**A01** = PTFE Disc Seal (190°C)  
**Valve Body Material & Disc Seal Material**  
**T** = Stainless Steel 304 Body & PTFE  
**Port 1-2 Flange Type + 3rd Port Thread/Flange**  
**D** = DIN EN 1092-1 (ISO 7005) Standard + 3rd Port DIN (2 Way and 3 Way)  
**E** = DIN EN 1092-1 (ISO 7005) Standard + 3rd Port Gaz/Rp (3 Way Only)  
**F** = DIN EN 1092-1 (ISO 7005) Standard + 3rd Port Rc (3 Way Only)  
**G** = DIN EN 1092-1 (ISO 7005) Standard + 3rd Port NPT (3 Way Only)  
**J** = JIS 20K Standard + 3rd Port JIS (2 Way and 3 Way)  
**K** = JIS 20K Standard + 3rd Port Gaz/Rp (3 Way Only)  
**L** = JIS 20K Standard + 3rd Port Rc (3 Way Only)  
**M** = JIS 20K Standard + 3rd Port NPT (3 Way Only)

## Dimensions: mm, Weights: kg



**TYPE 01-02-03**  
80, 100 and 150 mm operators



① Flange type 21 with form C raised face - EN 1092-1 (ISO 7005)

Type	DN	Operator Diameter	Ø A	Ø B	C	D		Ø E		F	n x Ø G		Ø H		J		K		Ø L		Ø M (G)	Weight (2)
						DIN	JIS	DIN	JIS		DIN	JIS	DIN	JIS	DIN	JIS	DIN	JIS	DIN	JIS		
01	15	80	15	110	150	130	146	95	95	44	4XØ14	4XØ15	65	70	16	14	2	1	45	51	1/8	4.5
					167				30													
02	20	100	20	132	175	150	146	105	100	51	4XØ14	4XØ15	75	75	18	16	2	1	58	56	1/4	5
					187				40													
03	25	100	25	132	179	160	167	115	125	62	4XØ14	4XØ19	85	90	18	16	2	1	68	67	1/4	7
					193				45													
03	32	150	32	190	225	180	190	140	135	70	4XØ18	4XØ19	100	100	18	18	2	2	78	76	1/4	9
					257				74													
03	40	150	40	190	261.7	200	190	150	140	80	4XØ18	4XØ19	100	105	18	18	2	2	88	81	1/4	12.9
					270.7				75													

Note  
(2) Weight of valve without pilot

## Options

Other standard flange designs