

ASCO™ Steam and Agressive Fluid Piston Valves

Air Operated, 304 Stainless Steel Bodies | 1/2" to 2" NPT

2/2
SERIES
298B

Features

- Rugged design, built to withstand steam, superheated water, and corrosive fluids
- Available in normally closed and normally open constructions
- High-performance, maintenance-free stuffing box that is resistant to thermal shock
- Anti-water hammer design
- Pressure can be applied to any port as needed by the process
- Visual position indicator standard
- Ideal for use on tire presses and industrial autoclaves

Construction

Operator: Nickel plated aluminum

| Valve Parts in Contact with Fluids | |
|------------------------------------|----------------------|
| Valve body and plug | 304 Stainless Steel |
| Stuffing box housing | 304 Stainless Steel |
| Stem, Disc | 431L Stainless Steel |
| Stuffing box packing | PTFE Chevron |
| Disc seal | PTFE |
| Valve body seal | PTFE |

Specifications

Fluid: Steam, superheated water, corrosive fluids

Fluid Temperature Range: 14°F to 356°F (-10°C to 180°C)

Ambient Temperature Range: -4°F to 356°F (-20°C to 180°C)

Maximum Viscosity: 23,500 SSU

Options

For other pipe connections, alternate pilot valves and construction options, please consult factory

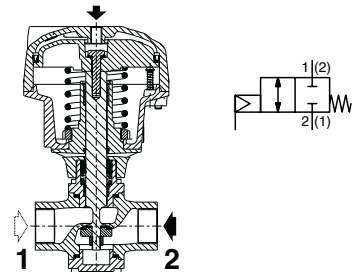
Pilot Valve

8356 Series

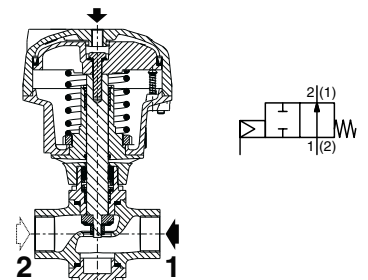
- In-line mount
 - 1/8" or 1/4" NPT
 - Brass or Stainless Steel
- (see 8356 catalog page for specifications)



Normally Closed



Normally Open



Installation

Valve can be mounted in any position

SPECIAL
SERVICE VALVES

Specifications English units (Metric)

| Pipe Size (in) | Operator (mm) | Flow Cv (Kv) | | Operating Pressure Differential (psi) | | Catalog Number | Air Pilot Pressure (psi) | | Const. Ref. | Approx. Shipping Weight (lbs.) |
|------------------------|---------------|--------------|-------------|---------------------------------------|----------|-----------------|--------------------------|----------|-------------|--------------------------------|
| | | Ports 1 - 2 | Ports 2 - 1 | Min. | Max. ① | | Min. | Max. | | |
| Normally Closed | | | | | | | | | | |
| 1/2" (15) | 80 | 5.1 (4.4) | 5.8 (5.0) | 0 | 580 (40) | 8298B0380TA0000 | ② | 145 (10) | 1 | 4.0 (1.8) |
| 3/4" (20) | 100 | 8.9 (7.7) | 9.8 (8.5) | 0 | 580 (40) | 8298B04E0TA0000 | ② | 145 (10) | 2 | 7.5 (3.4) |
| 1" (25) | 100 | 13.5 (11.5) | 13.0 (12.0) | 0 | 580 (40) | 8298B05E0TA0000 | ② | 145 (10) | 3 | 9.3 (4.2) |
| 1-1/4" (32) | 150 | 20.0 (18.0) | 20.0 (18.0) | 0 | 580 (40) | 8298B06L0TA0000 | ② | 145 (10) | 4 | 21.0 (9.3) |
| 1-1/2" (40) | 150 | 33.5 (29.0) | 33.5 (29.0) | 0 | 580 (40) | 8298B07L0TA0000 | ② | 145 (10) | 5 | 27.0 (11.4) |
| 2" (50) | 200 | 66.0 (57.0) | 66.0 (57.0) | 0 | 580 (40) | 8298B08N0TA0000 | ② | 145 (10) | 6 | 53.0 (23.5) |
| Normally Open | | | | | | | | | | |
| 1/2" (15) | 80 | 4.0 (3.5) | 4.0 (3.5) | 0 | 580 (40) | 8298B1380TA0000 | ③ | 145 (10) | 1 | 4.0 (1.8) |
| 3/4" (20) | 100 | 8.3 (7.2) | 8.1 (7.0) | 0 | 580 (40) | 8298B14E0TA0000 | ③ | 145 (10) | 2 | 7.7 (3.5) |
| 1" (25) | 100 | 12.0 (11.0) | 12.0 (11.0) | 0 | 580 (40) | 8298B15E0TA0000 | ③ | 145 (10) | 3 | 9.1 (4.1) |
| 1-1/4" (32) | 150 | 20.0 (18.0) | 17.0 (15.0) | 0 | 580 (40) | 8298B16L0TA0000 | ③ | 145 (10) | 4 | 21.0 (9.3) |
| 1-1/2" (40) | 150 | 32.6 (28.2) | 32.6 (28.2) | 0 | 580 (40) | 8298B17L0TA0000 | ③ | 145 (10) | 5 | 27.0 (11.4) |
| 2" (50) | 200 | 61.0 (53.0) | 61.0 (53.0) | 0 | 580 (40) | 8298B18N0TA0000 | ③ | 145 (10) | 6 | 49.0 (21.7) |

① 580 psi within the specified fluid temperature limits, see Diagram 1; 40 bar within the specified fluid temperature limits, see Diagram 1A
 ② Minimum pilot pressure for Normally Closed varies with differential pressure. See Chart A (psi); See Chart A1 (bar)
 ③ Minimum pilot pressure for Normally Open varies with differential pressure. See Chart B (psi); See Chart B1 (bar)

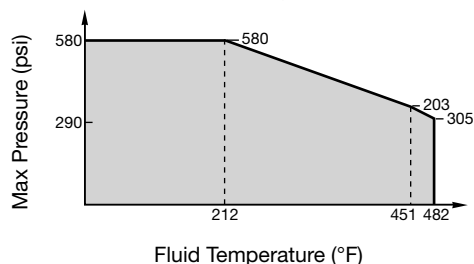
Spare Part Kits

| Type | Catalog Number | Spare Parts Kit |
|-----------------|-----------------|-----------------|
| Normally Closed | 8298B0380TA0000 | M29852671700100 |
| | 8298B04E0TA0000 | M29852671700400 |
| | 8298B05E0TA0000 | M29852671700700 |
| | 8298B06L0TA0000 | M29852671701000 |
| | 8298B07L0TA0000 | M29852671701300 |
| | 8298B08N0TA0000 | M29852671701600 |
| Normally Open | 8298B1380TA0000 | M29852671700200 |
| | 8298B14E0TA0000 | M29852671700500 |
| | 8298B15E0TA0000 | M29852671700800 |
| | 8298B16L0TA0000 | M29852671701100 |
| | 8298B17L0TA0000 | M29852671701400 |
| | 8298B18N0TA0000 | M29852671701700 |

SPECIAL SERVICE VALVES

English units

Diagram 1



Metric units

Diagram 1A

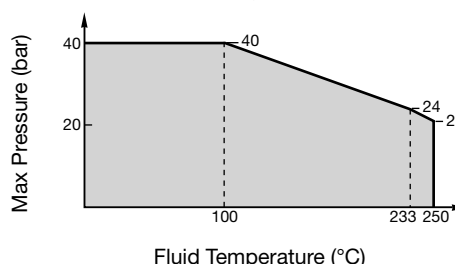


Chart A

Minimum Pilot Pressure
Normally Closed

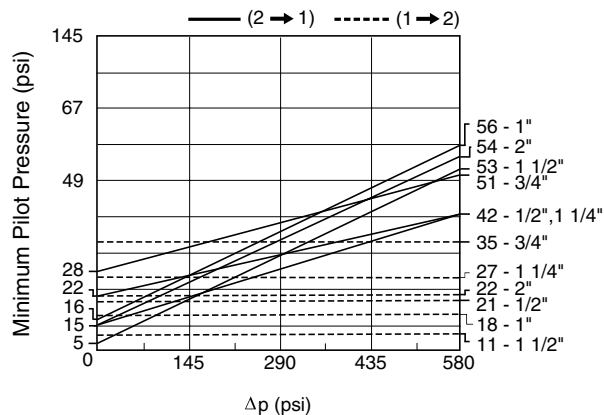


Chart A1

Minimum Pilot Pressure
Normally Closed

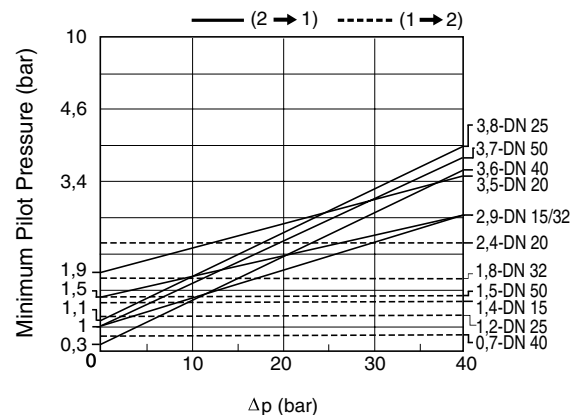


Chart B

Minimum Pilot Pressure
Normally Open

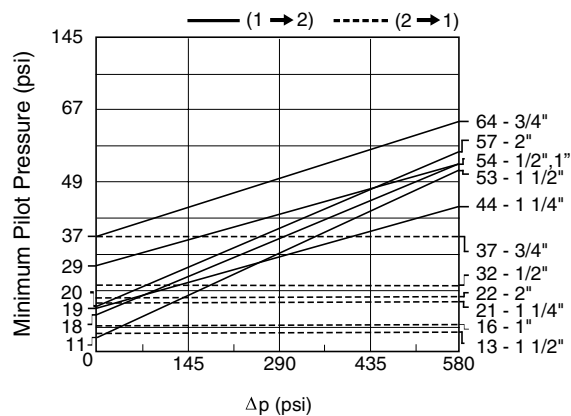
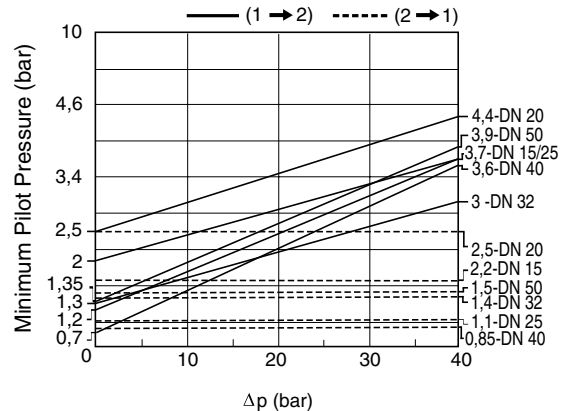


Chart B1

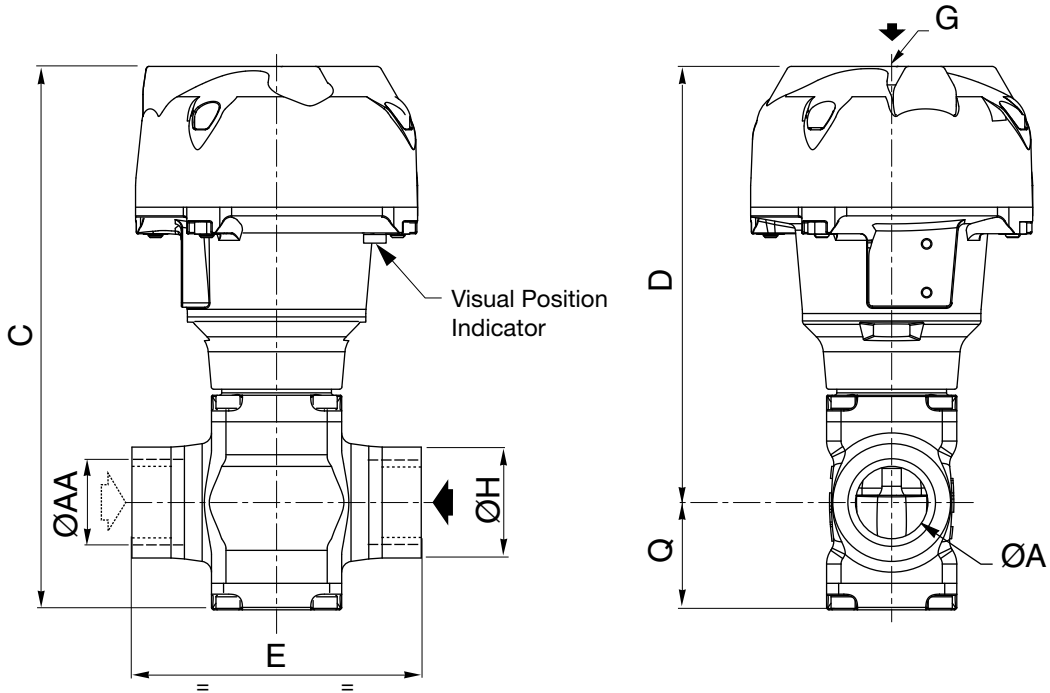
Minimum Pilot Pressure
Normally Open



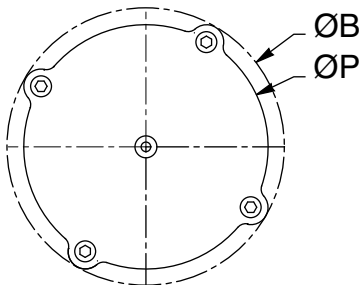
SPECIAL
SERVICE VALVES

Dimensions inches (mm)

| Const. Ref | | ØAA | ØA | ØB | C | D | E | G | ØH | ØP | Q |
|------------|----|-------|------|-----|-----|-----|-----|---------|-----|-----|-----|
| 1 | in | 1/2 | 0.59 | 4.3 | 7.2 | 6.0 | 3.3 | NPT 1/8 | 1.3 | 3.7 | 1.3 |
| | mm | 15 | 15 | 110 | 184 | 152 | 85 | | 33 | 95 | 33 |
| 2 | in | 3/4 | 0.79 | 5.2 | 8.3 | 6.7 | 4.3 | NPT 1/8 | 1.6 | 4.6 | 1.5 |
| | mm | 20 | 20 | 133 | 210 | 171 | 110 | | 40 | 117 | 39 |
| 3 | in | 1 | 0.98 | 5.2 | 8.9 | 7.1 | 4.7 | NPT 1/8 | 1.8 | 4.6 | 1.8 |
| | mm | 25 | 25 | 133 | 225 | 181 | 120 | | 46 | 117 | 45 |
| 4 | in | 1 1/4 | 1.3 | 7.5 | 11 | 9.3 | 5.7 | NPT 1/4 | 2.2 | 6.8 | 2.2 |
| | mm | 32 | 32 | 191 | 291 | 237 | 145 | | 57 | 173 | 54 |
| 5 | in | 1 1/2 | 1.6 | 7.5 | 13 | 10 | 5.9 | NPT 1/4 | 2.6 | 1.8 | 2.6 |
| | mm | 40 | 40 | 191 | 326 | 259 | 150 | | 65 | 173 | 67 |
| 6 | in | 2 | 2.0 | 9.7 | 16 | 13 | 7.5 | NPT 1/4 | 3.0 | 9.1 | 3.2 |
| | mm | 50 | 50 | 247 | 409 | 329 | 190 | | 75 | 230 | 81 |



Top down view



SPECIAL
 SERVICE VALVES