

Commercial Service Reliability



FISHER™

CS800 Series

Introduction

The CS800 Series direct-operated, spring-loaded regulators have been engineered to fit a multitude of pressure-reducing applications including commercial and light industrial installations. This flexibility is provided by the numerous body sizes and end connections, outlet pressure settings, orifice sizes and the option for internal or external pressure registration.

The CS800 Series also offers numerous overpressure protection options including:

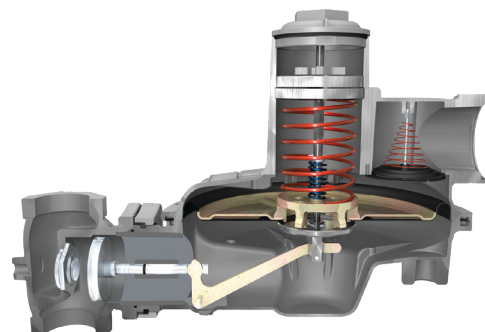
- Internal Relief
- High Capacity Relief
- Secondary Seat™ Protection
- True-Monitor™ Protection
- Slam-Shut Protection

Product Advantages

- Increased relief and flow capacity = reduced installation cost
- Reduced maintenance costs
- Complete overpressure protection
- Available with various body sizes and connections
- Corrosion resistant fasteners and springs
- Single bolt size reduces tools required to install and maintain



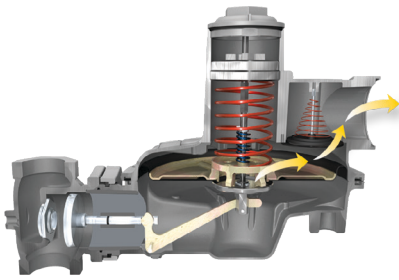
CS800 Series



Internal View of Optional High Capacity Relief Construction



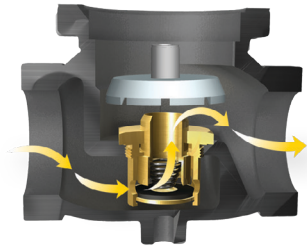
Largest Overpressure Protection Breadth in the Industry



High Capacity Relief - Large 2-1/2 NPT vent provides a significant increase in relieving capacity and level of overpressure protection to the downstream system.



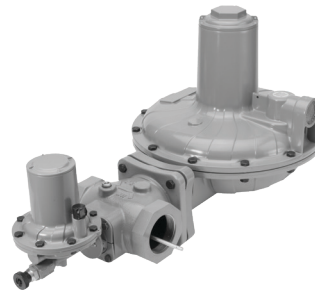
Internal Relief - Minimizes downstream pressure buildup by relieving gas through the diaphragm assembly and out the 1 NPT vent to atmosphere in the event of an overpressure situation.



Secondary Seat™ Protection - Provides a solution to the most common cause of regulators failing to shutoff by employing a secondary seating surface for shutoff if the primary orifice seating surface becomes damaged or blocked.



Integral True-Monitor™ Protection - Combines the operation of a conventional two-regulator wide-open monitor set into one device without the need for a downstream control line.



Slam-Shut Protection - Provides an integral slam-shut module that shuts off the flow of gas to the downstream system in an overpressure or underpressure situation.

Specifications

- **Operation:** Direct-Operated, Pressure Reducing
- **Body Sizes:** 1-1/4, 1-1/2, 2 NPT, Rp 2; NPS 2 / DN 50 (CL125 FF, CL150 FF, CL150 RF, PN 10/16)
- **Maximum Inlet Pressure:** up to 175 psig / 12.1 bar
- **Maximum Outlet Pressure:** up to 15 psig / 1.0 bar
- **Outlet Pressure Ranges:** 3.5 in. w.c. to 10 psig / 9 to 690 mbar
- **Temperature Capabilities:** -20 to 150°F / -30 to 66°C
- **Spring Case Vent Connection:** 1 or 2-1/2 NPT
- **Pressure Registration:** Internal and External
- **Body Material:** Gray Cast Iron, Ductile Iron and Steel
- **Overpressure Protection:** Internal Relief, High Capacity Relief, Secondary Seat Protection, Integral True-Monitor Protection, Slam-Shut Protection

Emerson Automation Solutions

Americas

T +1 800 558 5853
T +1 972 548 3574

Europe

T +39 051 419 0611

Asia Pacific

T +65 6777 8211

Middle East / Africa

T +971 4811 8100

- ✉ webadmin.regulators@emerson.com
- 🔍 Fisher.com
- 📘 Facebook.com/EmersonAutomationSolutions
- 🌐 LinkedIn.com/company/emerson-automation-solutions
- 🐦 Twitter.com/emr_automation



The distinctive swirl pattern cast into every actuator casing uniquely identifies the regulator as part of the Fisher™ brand Commercial Service Regulator family and assures you of the highest-quality engineering, performance, and support traditionally associated with Fisher™, Francel™ and Tartarini™ regulators. Visit www.fishercommercialservice.com to access interactive applications.

