

Data sheet

Sheet No.: GHI 3.01

Date: April 2020

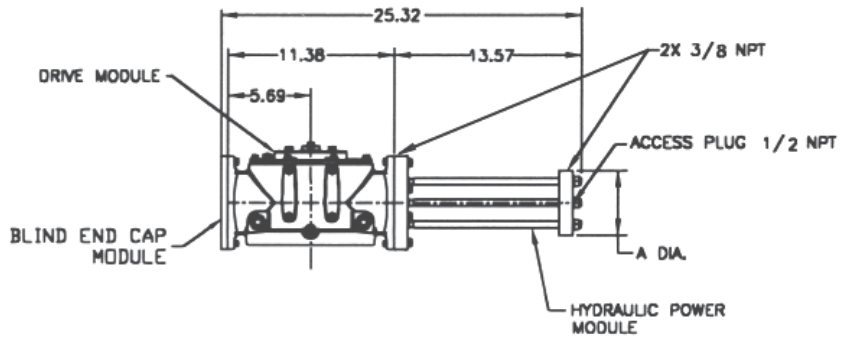
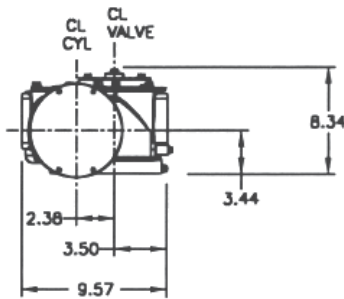
G/GC-Series

Dimensions – (Hydraulic) In.

G/GC-Series

Double-Acting Actuators

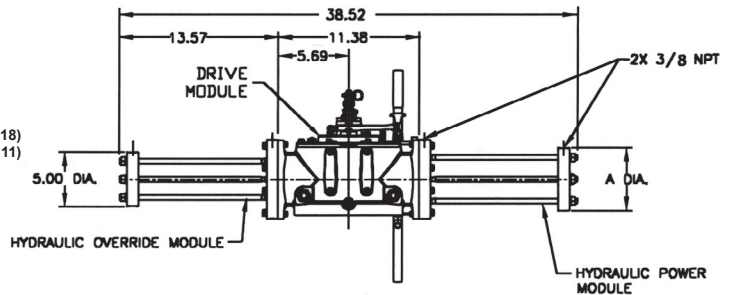
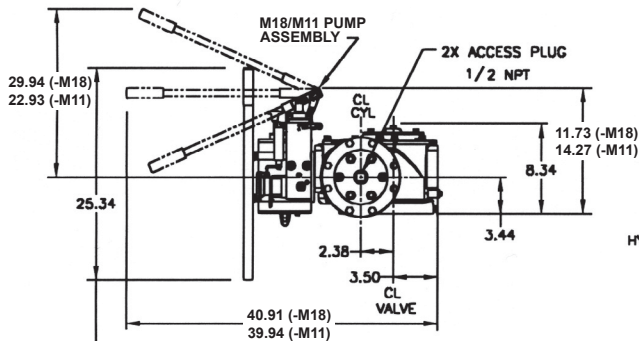
G0100X.X/GC0100X.X (CW Model Shown)



Actuator Model	A
G01001.5/GC01001.5	4.25
G01001.7/GC01001.7	4.50
G01002.0/GC01002.0	4.50
G01002.2/GC01002.2	4.75
G01002.5/GC01002.5	5.00
G01003.0/GC01003.0	5.50
G01003.5/GC01003.5	6.00

G0100X.X-M18/GC0100X.X-M18

G0100X.X-M11/GC0100X.X-M11 (CW Model Shown)



Actuator Model	A
G01001.5-M18/GC01001.5-M18	4.25
G01001.7-M18/GC01001.7-M18	4.50
G01002.0-M18/GC01002.0-M18	4.50
G01002.2-M18/GC01002.2-M18	4.75
G01002.5-M18/GC01002.5-M18	5.00
G01003.0-M18/GC01003.0-M18	5.50
G01003.5-M18/GC01003.5-M18	6.00

NOTE: PUMP HANDLE SHOWN STORED, MAY BE MOVED UP OR DOWN.

Note: Not Certified dimensional drawings. Such drawings available on request. Contact factory with correct model designation and serial number. All dimensions are expressed in inches.

* Dimension A remain the same in case -M11 in actuator model.

BETTIS™

EMERSON™

Data sheet

Sheet No.: GHI 3.02

Date: April 2020

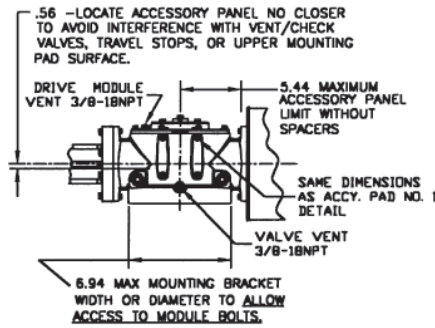
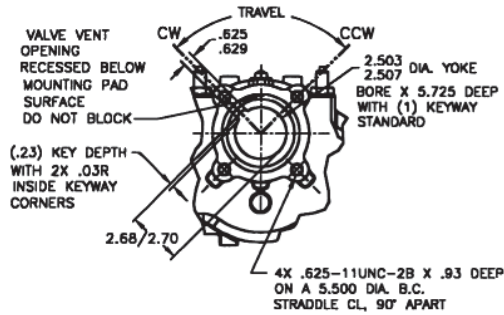
G/GC-Series

Dimensions – (Hydraulic) In.

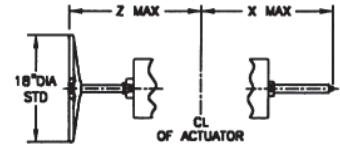
G/GC-Series

Double-Acting Actuators
Mounting Pad Detail

Adjustable End Stops
& Jackscrews



ACCESSORY PAD NO. 2 DETAIL



	X (-ETS) Extended Travel Stop	X End Stop	Z* (M3/M3HW) Jackscrew
Power Module	27.32	20.41	C/F*
Blind End Cap Module	15.83	8.92	17.43
Spring Module	47.65	40.31	46.63

C/F Consult Factory

Note: Jackscrews are not recommended for use on hydraulic cylinders. If used, they are allowable on the Spring Module or Blind End Cap Modules ends **only**. It is probable that some leakage of hydraulic fluid past the jackscrew pressure containing thread seals will occur over time if used on the Power Module side, negating any warranty for hydraulic Power Modules.

Note: Not Certified dimensional drawings. Such drawings available on request. Contact factory with correct model designation and serial number. All dimensions are expressed in inches.

BETTIS™

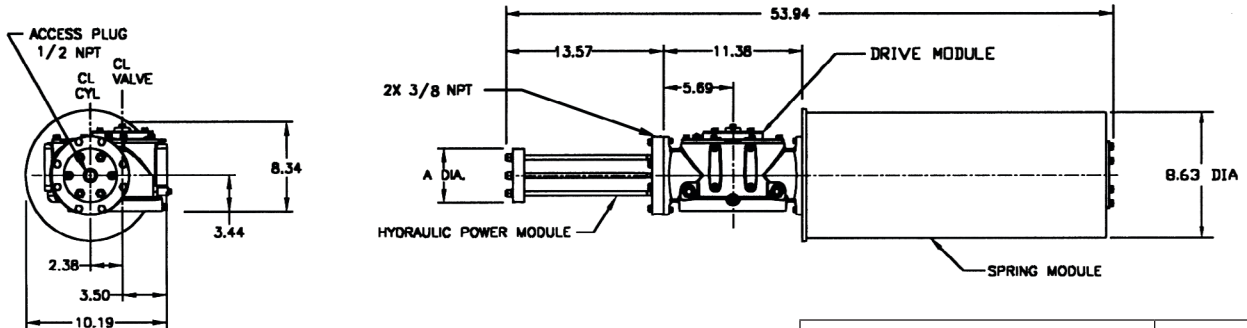

EMERSON™

Dimensions – (Hydraulic) In.

G/GC-Series

Spring-Return Actuators

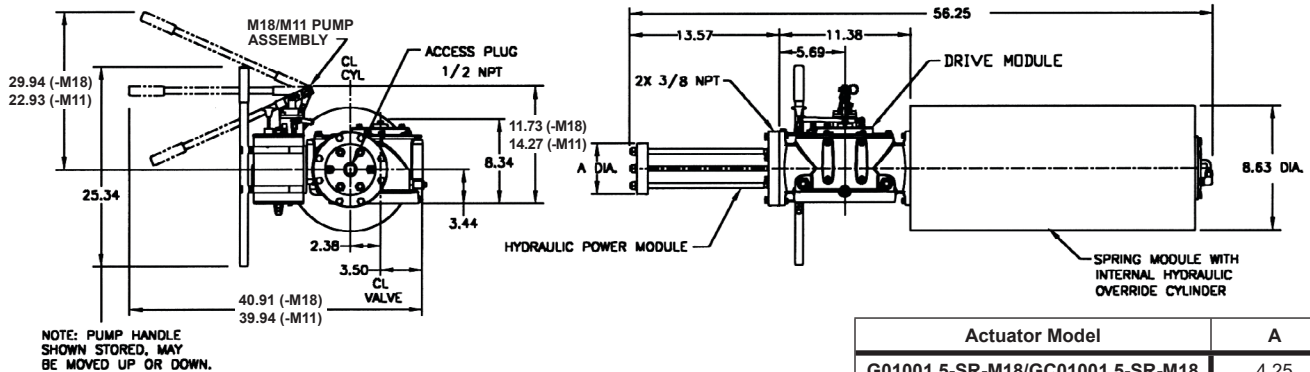
G0100X.X-SR/GC0100X.X-SR (CW Model Shown)



Actuator Model	A
G01001.5-SR/GC01001.5-SR	4.25
G01001.7-SR/GC01001.7-SR	4.50
G01002.0-SR/GC01002.0-SR	4.50
G01002.2-SR/GC01002.2-SR	4.75
G01002.5-SR/GC01002.5-SR	5.00
G01003.0-SR/GC01003.0-SR	5.50
G01003.5-SR/GC01003.5-SR	6.00

G0100X.X-SR-M18/GC0100X.X-SR-M18

G0100X.X-SR-M11/GC0100X.X-SR-M11 (CW Model Shown)



Actuator Model	A
G01001.5-SR-M18/GC01001.5-SR-M18	4.25
G01001.7-SR-M18/GC01001.7-SR-M18	4.50
G01002.0-SR-M18/GC01002.0-SR-M18	4.50
G01002.2-SR-M18/GC01002.2-SR-M18	4.75
G01002.5-SR-M18/GC01002.5-SR-M18	5.00
G01003.0-SR-M18/GC01003.0-SR-M18	5.50
G01003.5-SR-M18/GC01003.5-SR-M18	6.00

Note: Not Certified dimensional drawings. Such drawings available on request.
 Contact factory with correct model designation and serial number.
 All dimensions are expressed in inches.

* Dimension A remain the same in case -M11 in actuator model.

Data sheet

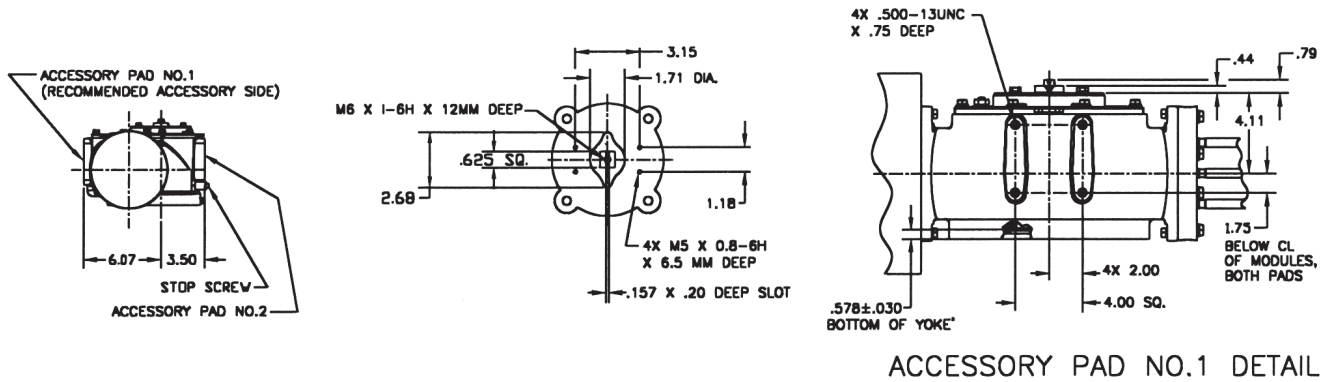
Sheet No.: GHI 3.04

Date: April 2020

G/GC-Series

Dimensions – (Hydraulic) In. G/GC-Series

Spring-Return Actuators
Accessory Details



ACCESSORY PAD NO.1 DETAIL

Note: Not Certified dimensional drawings. Such drawings available on request.
Contact factory with correct model designation and serial number.
All dimensions are expressed in inches.

BETTIS™

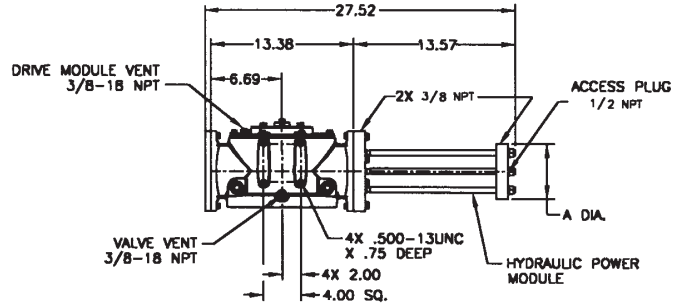
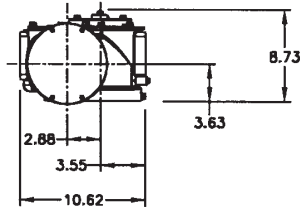


EMERSON™

Copyright © Emerson. The information in this document is subject to change without notice. Updated data sheets can be obtained from our website www.emerson.com/bettis or from your Emerson Automation Solutions - Actuation Technologies Center:
America's: +1 281 477 4100 Europe: +36 22 53 0950 Asia/Pacific: +65 67 77 8211 Middle East: +971 4 811 8100

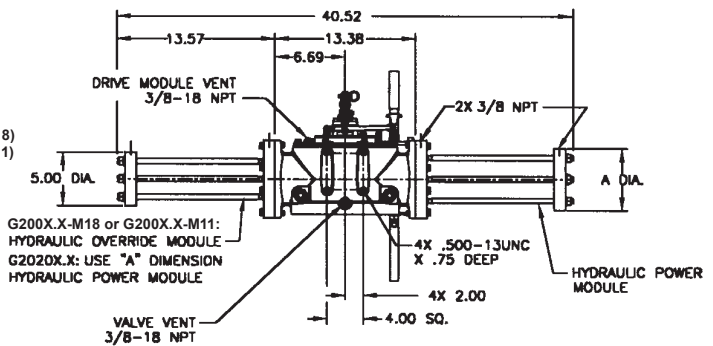
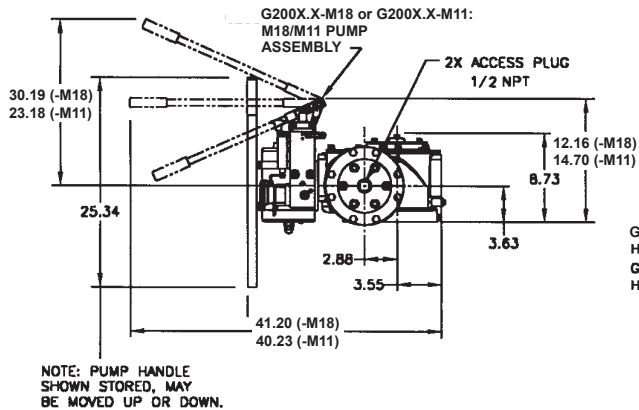
Dimensions – (Hydraulic) In. G/GC-Series

Double-Acting Actuators
G200X.X/GC200X.X (CW Model Shown)



Actuator Model	A
G2001.7/GC2001.7	4.50
G2002.0/GC2002.0	4.62
G2002.2/GC2002.2	4.75
G2002.5/GC2002.5	5.00
G2003.0/GC2003.0	5.50
G2003.5/GC2003.5	6.00
G2004.0/GC2004.0	6.50

G200X.X-M18/GC200X.X-M18
G200X.X-M11/GC200X.X-M11 or G2020X.X/GC2020X.X (No M18/M11) (CW Model Shown)



Actuator Model	A
G2001.7-M18/GC2001.7-M18	4.50
G2002.0-M18/GC2002.0-M18	4.62
G2002.2-M18/GC2002.2-M18	4.75
G2002.5-M18/GC2002.5-M18	5.00
G2003.0-M18/GC2003.0-M18	5.50
G2003.5-M18/GC2003.5-M18	6.00
G2004.0-M18/GC2004.0-M18	6.50

Actuator Model	A
G20201.7/GC20201.7	4.50
G20202.0/GC20202.0	4.62
G20202.2/GC20202.2	4.75
G20202.5/GC20202.5	5.00
G20203.0/GC20203.0	5.50
G20203.5/GC20203.5	6.00
G20204.0/GC20204.0	6.50

Note: Not Certified dimensional drawings. Such drawings available on request.
Contact factory with correct model designation and serial number.
All dimensions are expressed in inches.

* Dimension A remain the same in case -M11 in actuator model.

Data sheet

Sheet No.: GHI 3.06

Date: April 2020

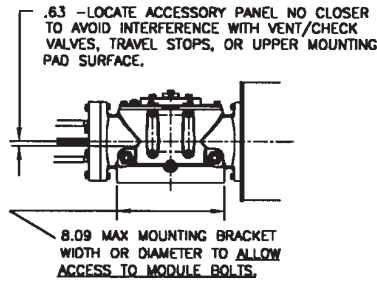
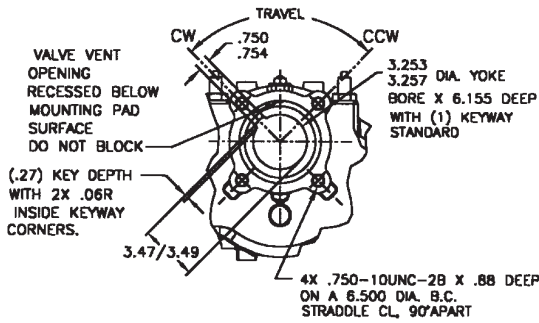
G/GC-Series

Dimensions – (Hydraulic) In.

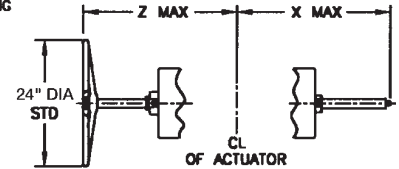
G/GC-Series

Double-Acting Actuators
Valve/Accessory Mounting Details

Adjustable End Stops
& Jackscrews



ACCESSORY PAD NO. 2 DETAIL



	X (-ETS) Extended Travel Stop	X End Stop	Z* (M3/M3HW) Jackscrew
Power Module	28.32	21.41	C/F*
Blind End Cap Module	16.83	9.92	22.55
Spring Module	48.22	41.31	50.35

C/F Consult Factory

***Note:** Jackscrews are not recommended for use on hydraulic cylinders. If used, they are allowable on the Spring Module or Blind End Cap Modules ends *only*. It is probable that some leakage of hydraulic fluid past the jackscrew pressure containing thread seals will occur over time if used on the Power Module side, negating any warranty for hydraulic Power Modules.

Note: Not Certified dimensional drawings. Such drawings available on request. Contact factory with correct model designation and serial number. All dimensions are expressed in inches.

BETTIS™

EMERSON™

Data sheet

Sheet No.: GHI 3.07

Date: April 2020

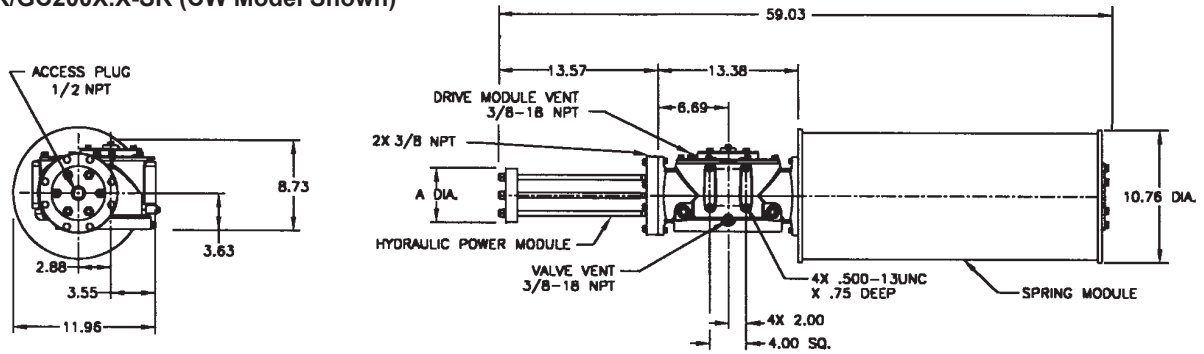
G/GC-Series

Dimensions – (Hydraulic) In.

G/GC-Series

Spring-Return Actuators

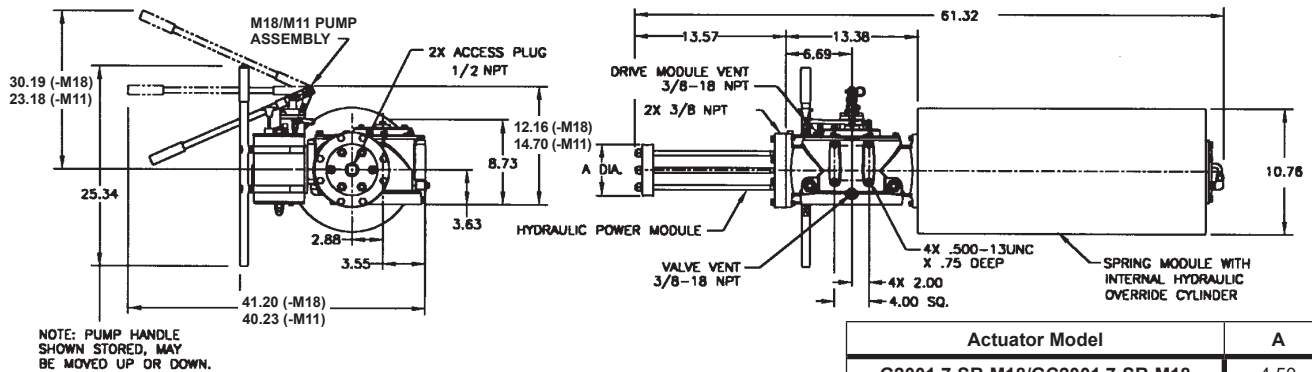
G200X.X-SR/GC200X.X-SR (CW Model Shown)



Actuator Model	A
G2001.7-SR/GC2001.7-SR	4.50
G2002.0-SR/GC2002.0-SR	4.62
G2002.2-SR/GC2002.2-SR	4.75
G2002.5-SR/GC2002.5-SR	5.00
G2003.0-SR/GC2003.0-SR	5.50
G2003.5-SR/GC2003.5-SR	6.00
G2004.0-SR/GC2004.0-SR	6.50

G200X.X-SR-M18/GC200X.X-SR-M18

G200X.X-SR-M11/GC200X.X-SR-M11 (CW Model Shown)



NOTE: PUMP HANDLE SHOWN STORED, MAY BE MOVED UP OR DOWN.

Actuator Model	A
G2001.7-SR-M18/GC2001.7-SR-M18	4.50
G2002.0-SR-M18/GC2002.0-SR-M18	4.62
G2002.2-SR-M18/GC2002.2-SR-M18	4.75
G2002.5-SR-M18/GC2002.5-SR-M18	5.00
G2003.0-SR-M18/GC2003.0-SR-M18	5.50
G2003.5-SR-M18/GC2003.5-SR-M18	6.00
G2004.0-SR-M18/GC2004.0-SR-M18	6.50

Note: Not Certified dimensional drawings. Such drawings available on request.
Contact factory with correct model designation and serial number.
All dimensions are expressed in inches.

* Dimension A remain the same in case -M11 in actuator model.

BETTIS™

EMERSON™

Data sheet

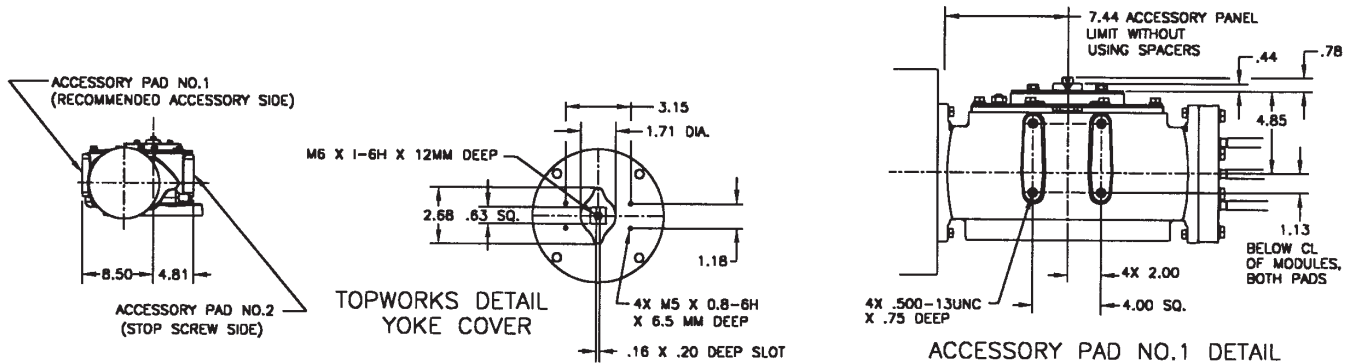
Sheet No.: GHI 3.08

Date: April 2020

G/GC-Series

Dimensions – (Hydraulic) In. G/GC-Series

Spring-Return Actuators
Accessory Details



Note: Not Certified dimensional drawings. Such drawings available on request.
Contact factory with correct model designation and serial number.
All dimensions are expressed in inches.

BETTIS™

Copyright © Emerson. The information in this document is subject to change without notice. Updated data sheets can be obtained from our website www.emerson.com/bettis or from your Emerson Automation Solutions - Actuation Technologies Center:
America's: +1 281 477 4100 Europe: +36 22 53 0950 Asia/Pacific: +65 67 77 8211 Middle East: +971 4 811 8100



EMERSON™

Data sheet

Sheet No.: GHI 3.09

Date: April 2020

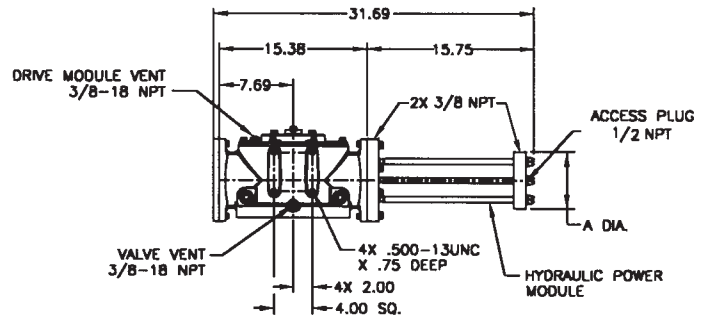
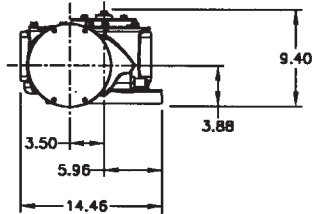
G/GC-Series

Dimensions – (Hydraulic) In.

G/GC-Series

Double-Acting Actuators

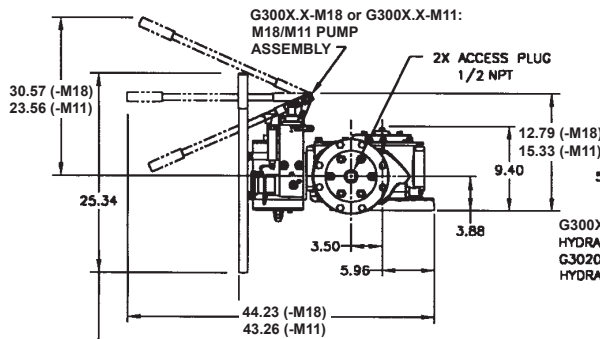
G300X.X/GC300X.X (CW Model Shown)



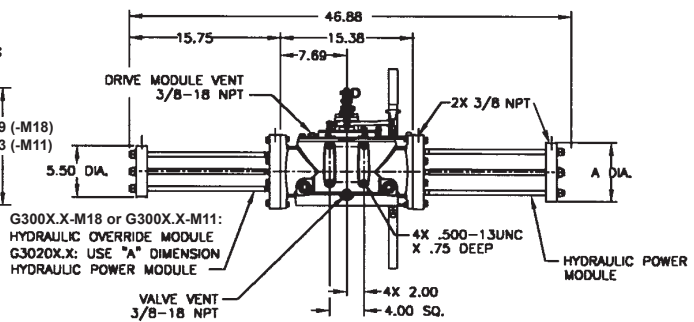
Actuator Model	A
G3002.0/GC3002.0	4.50
G3002.2/GC3002.2	4.75
G3002.5/GC3002.5	5.25
G3003.0/GC3003.0	5.50
G3003.5/GC3003.5	6.00
G3004.0/GC3004.0	6.50
G3004.5/GC3004.5	7.00

G300X.X-M18/GC300X.X-M18

G300X.X-M11/GC300X.X-M11 or G3020X.X/GC3020X.X (No M18/M11) (CW Model Shown)



NOTE: PUMP HANDLE SHOWN STORED, MAY BE MOVED UP OR DOWN.



Actuator Model	A	Actuator Model	A
G3002.0-M18/GC3002.0-M18	4.50	G30202.0/GC30202.0	4.50
G3002.2-M18/GC3002.2-M18	4.75	G30202.2/GC30202.2	4.75
G3002.5-M18/GC3002.5-M18	5.25	G30202.5/GC30202.5	5.25
G3003.0-M18/GC3003.0-M18	5.50	G30203.0/GC30203.0	5.50
G3003.5-M18/GC3003.5-M18	6.00	G30203.5/GC30203.5	6.00
G3004.0-M18/GC3004.0-M18	6.50	G30204.0/GC30204.0	6.50
G3004.5-M18/GC3004.5-M18	7.00	G30204.5/GC30204.5	7.00

Note: Not Certified dimensional drawings. Such drawings available on request. Contact factory with correct model designation and serial number. All dimensions are expressed in inches.

* Dimension A remain the same in case -M11 in actuator model.

BETTIS™

EMERSON™

Data sheet

Sheet No.: GHI 3.10

Date: April 2020

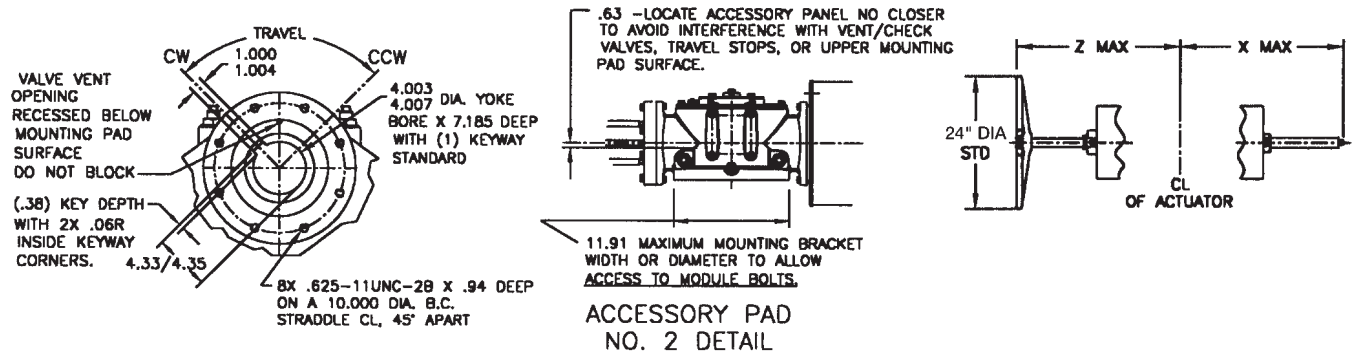
G/GC-Series

Dimensions – (Hydraulic) In.

G/GC-Series

Double-Acting Actuators
Valve/Accessory Mounting Details

Adjustable End Stops
& Jackscrews



	X (-ETS) Extended Travel Stop	X End Stop	Z* (M3/M3HW) Jackscrew
Power Module	33.09	24.53	C/F*
Blind End Cap Module	19.57	11.10	22.86
Spring Module	53.30	44.74	55.00

C/F Consult Factory

***Note:** Jackscrews are not recommended for use on hydraulic cylinders. If used, they are allowable on the Spring Module or Blind End Cap Modules ends *only*. It is probable that some leakage of hydraulic fluid past the jackscrew pressure containing thread seals will occur over time if used on the Power Module side, negating any warranty for hydraulic Power Modules.

Note: Not Certified dimensional drawings. Such drawings available on request. Contact factory with correct model designation and serial number. All dimensions are expressed in inches.

BETTIS™


EMERSON™

Data sheet

Sheet No.: GHI 3.11

Date: April 2020

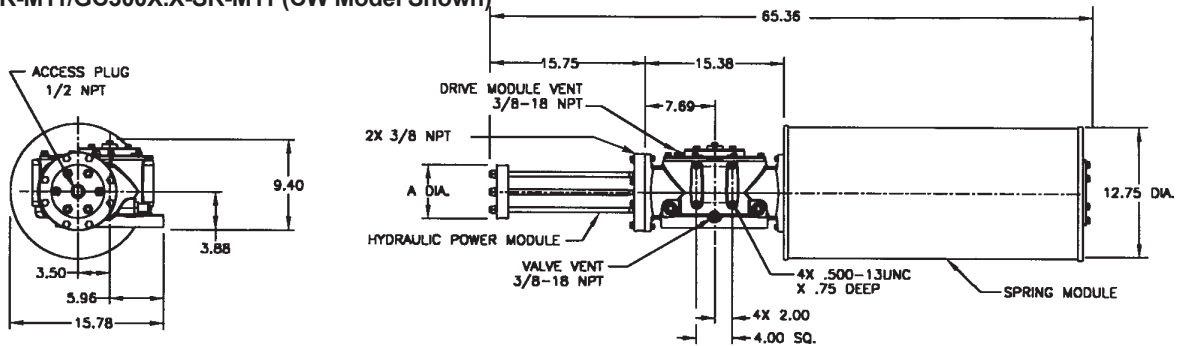
G/GC-Series

Dimensions – (Hydraulic) In.

G/GC-Series

Spring-Return Actuators

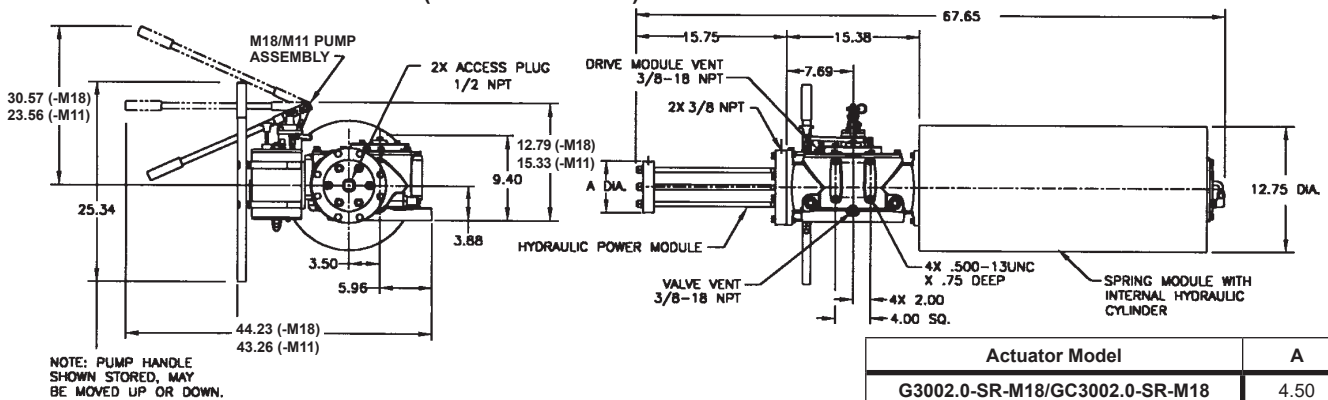
G300X.X-SR-M11/GC300X.X-SR-M11 (CW Model Shown)



Actuator Model	A
G3002.0-SR/GC3002.0-SR	4.50
G3002.2-SR/GC3002.2-SR	4.75
G3002.5-SR/GC3002.5-SR	5.25
G3003.0-SR/GC3003.0-SR	5.50
G3003.5-SR/GC3003.5-SR	6.00
G3004.0-SR/GC3004.0-SR	6.50
G3004.5-SR/GC3004.5-SR	7.00

G300X.X-SR-M18/GC300X.X-SR-M18

G300X.X-SR-M11/GC300X.X-SR-M11 (CW Model Shown)



NOTE: PUMP HANDLE SHOWN STORED, MAY BE MOVED UP OR DOWN.

Actuator Model	A
G3002.0-SR-M18/GC3002.0-SR-M18	4.50
G3002.2-SR-M18/GC3002.2-SR-M18	4.75
G3002.5-SR-M18/GC3002.5-SR-M18	5.25
G3003.0-SR-M18/GC3003.0-SR-M18	5.50
G3003.5-SR-M18/GC3003.5-SR-M18	6.00
G3004.0-SR-M18/GC3004.0-SR-M18	6.50
G3004.5-SR-M18/GC3004.5-SR-M18	7.00

Note: Not Certified dimensional drawings. Such drawings available on request.
 Contact factory with correct model designation and serial number.
 All dimensions are expressed in inches.

* Dimension A remain the same in case -M11 in actuator model.

BETTIS™

EMERSON™

Data sheet

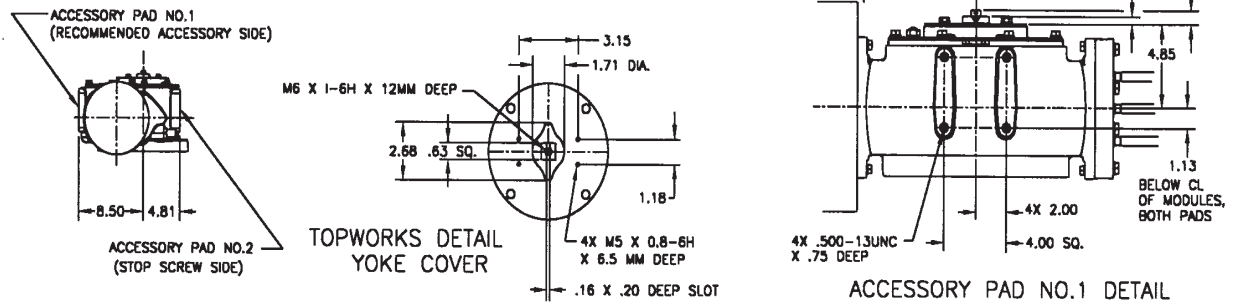
Sheet No.: GHI 3.12

Date: April 2020

G/GC-Series

Dimensions – (Hydraulic) In. G/GC-Series

Spring-Return Actuators
Accessory Details



Note: Not Certified dimensional drawings. Such drawings available on request.
Contact factory with correct model designation and serial number.
All dimensions are expressed in inches.

BETTIS™

Copyright © Emerson. The information in this document is subject to change without notice. Updated data sheets can be obtained from our website www.emerson.com/bettis or from your Emerson Automation Solutions - Actuation Technologies Center:
America's: +1 281 477 4100 Europe: +36 22 53 0950 Asia/Pacific: +65 67 77 8211 Middle East: +971 4 811 8100



EMERSON™

Data sheet

Sheet No.: GHI 3.13

Date: April 2020

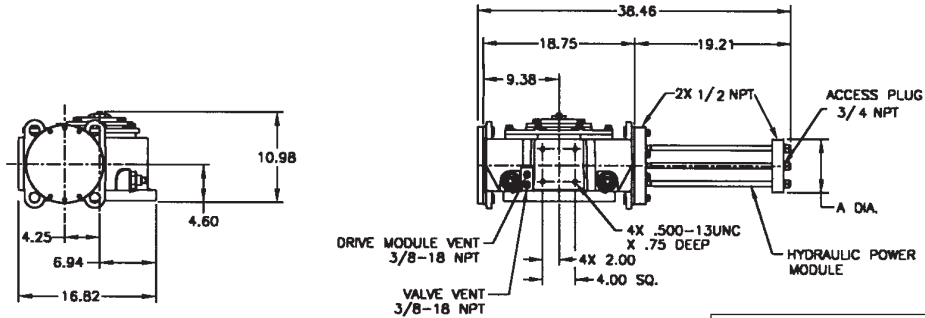
G/GC-Series

Dimensions – (Hydraulic) In.

G/GC-Series

Double-Acting Actuators

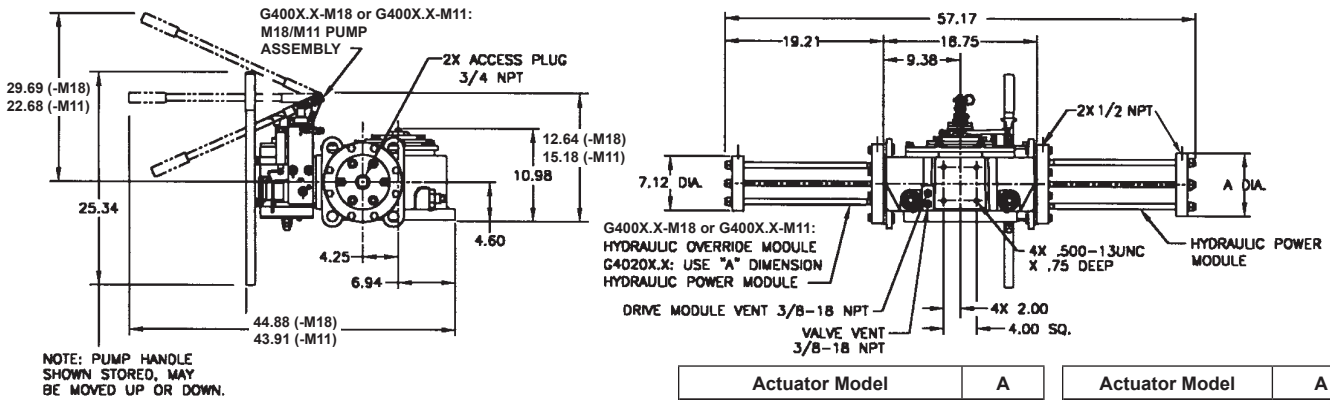
G400X.X/GC400X.X (CW Model Shown)



Actuator Model	A
G4002.5/GC4002.5	5.66
G4003.0/GC4003.0	6.50
G4003.5/GC4003.5	6.75
G4004.0/GC4004.0	7.12
G4004.5/GC4004.5	7.50
G4005.0/GC4005.0	8.00
G4006.0/GC4006.0	9.00

G400X.X-M18/GC400X.X-M18

G400X.X-M11/GC400X.X-M11 or G4020X.X/GC4020X.X (No M18/M11) (CW Model Shown)



Actuator Model	A	Actuator Model	A
G4002.5-M18/GC4002.5-M18	5.66	G40202.5/GC40202.5	5.66
G4003.0-M18/GC4003.0-M18	6.50	G40203.0/GC40203.0	6.50
G4003.5-M18/GC4003.5-M18	6.75	G40203.5/GC40203.5	6.75
G4004.0-M18/GC4004.0-M18	7.12	G40204.0/GC40204.0	7.12
G4004.5-M18/GC4004.5-M18	7.50	G40204.5/GC40204.5	7.50
G4005.0-M18/GC4005.0-M18	8.00	G40205.0/GC40205.0	8.00
G4006.0-M18/GC4006.0-M18	9.00	G40206.0/GC40206.0	9.00

Note: Not Certified dimensional drawings. Such drawings available on request. Contact factory with correct model designation and serial number. All dimensions are expressed in inches.

* Dimension A remain the same in case -M11 in actuator model.

BETTIS™

EMERSON™

Copyright © Emerson. The information in this document is subject to change without notice. Updated data sheets can be obtained from our website www.emerson.com/bettis or from your Emerson Automation Solutions - Actuation Technologies Center:
 America's: +1 281 477 4100 Europe: +36 22 53 0950 Asia/Pacific: +65 67 77 8211 Middle East: +971 4 811 8100

Data sheet

Sheet No.: GHI 3.14

Date: April 2020

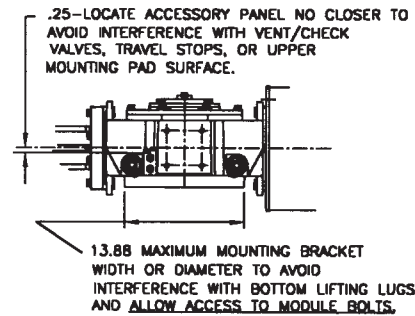
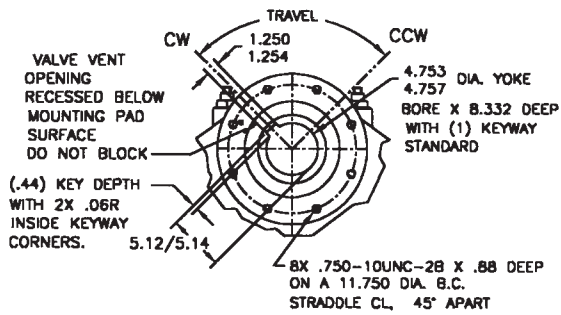
G/GC-Series

Dimensions – (Hydraulic) In.

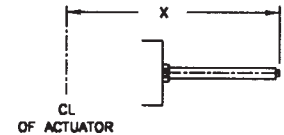
G/GC-Series

Double-Acting Actuators
Valve/Accessory Mounting Details

Adjustable End Stops



ACCESSORY PAD NO.2 DETAIL



	X Extended Travel Stop	X End Stop
Power Module	39.74	31.12
Blind End Cap Module	23.32	14.70
Spring Module	60.61	52.00

Note: Not Certified dimensional drawings. Such drawings available on request.
Contact factory with correct model designation and serial number.
All dimensions are expressed in inches.

BETTIS™

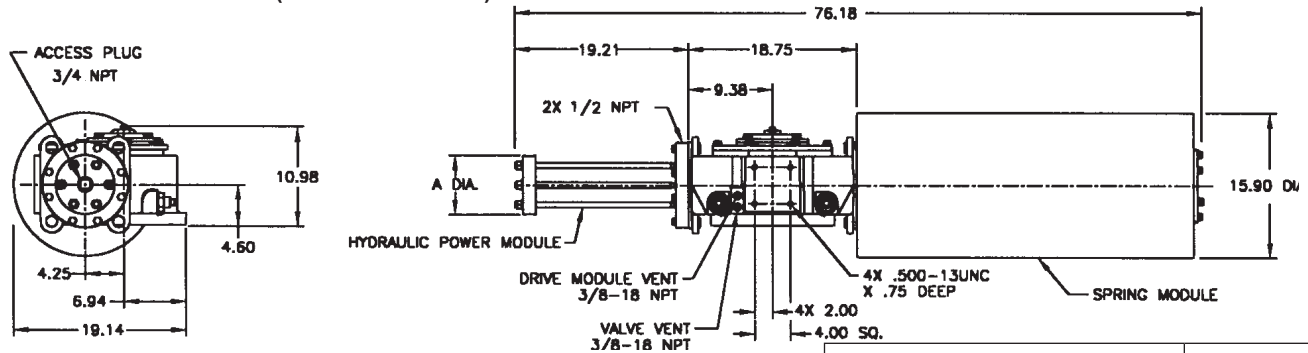
EMERSON™

Dimensions – (Hydraulic) In.

G/GC-Series

Spring-Return Actuators

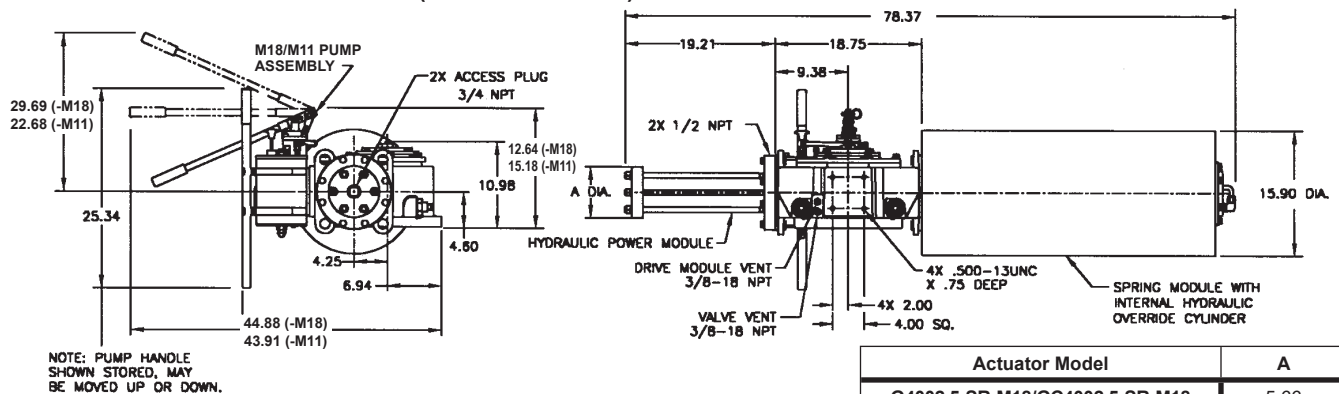
G400X.X-SR/GC400X.X-SR (CW Model Shown)



Actuator Model	A
G4002.5-SR/GC4002.5-SR	5.66
G4003.0-SR/GC4003.0-SR	6.50
G4003.5-SR/GC4003.5-SR	6.75
G4004.0-SR/GC4004.0-SR	7.12
G4004.5-SR/GC4004.5-SR	7.50
G4005.0-SR/GC4005.0-SR	8.00
G4006.0-SR/GC4006.0-SR	9.00

G400X.X-SR-M18/GC400X.X-SR-M18

G400X.X-SR-M11/GC400X.X-SR-M11 (CW Model Shown)



Actuator Model	A
G4002.5-SR-M18/GC4002.5-SR-M18	5.66
G4003.0-SR-M18/GC4003.0-SR-M18	6.50
G4003.5-SR-M18/GC4003.5-SR-M18	6.75
G4004.0-SR-M18/GC4004.0-SR-M18	7.12
G4004.5-SR-M18/GC4004.5-SR-M18	7.50
G4005.0-SR-M18/GC4005.0-SR-M18	8.00
G4006.0-SR-M18/GC4006.0-SR-M18	9.00

Note: Not Certified dimensional drawings. Such drawings available on request.
 Contact factory with correct model designation and serial number.
 All dimensions are expressed in inches.

* Dimension A remain the same in case -M11 in actuator model.

Data sheet

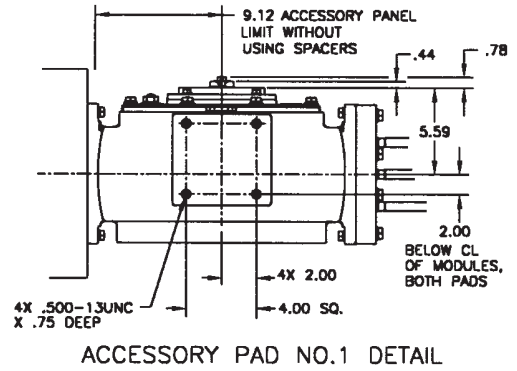
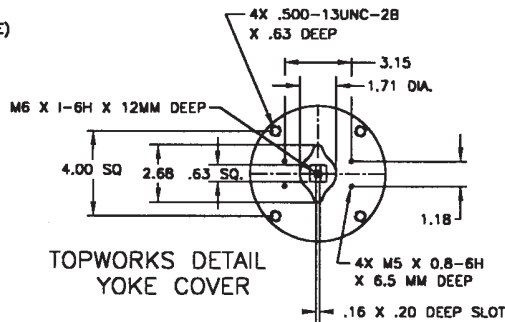
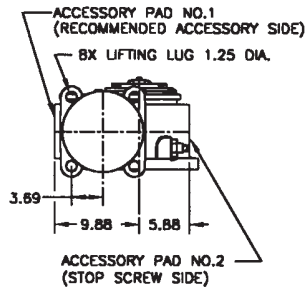
Sheet No.: GHI 3.16

Date: April 2020

G/GC-Series

Dimensions – (Hydraulic) In. G/GC-Series

Spring-Return Actuators
Lug/Accessory Details



Note: Not Certified dimensional drawings. Such drawings available on request.
Contact factory with correct model designation and serial number.
All dimensions are expressed in inches.

BETTIS™

Copyright © Emerson. The information in this document is subject to change without notice. Updated data sheets can be obtained from our website www.emerson.com/bettis or from your Emerson Automation Solutions - Actuation Technologies Center:
America's: +1 281 477 4100 Europe: +36 22 53 0950 Asia/Pacific: +65 67 77 8211 Middle East: +971 4 811 8100

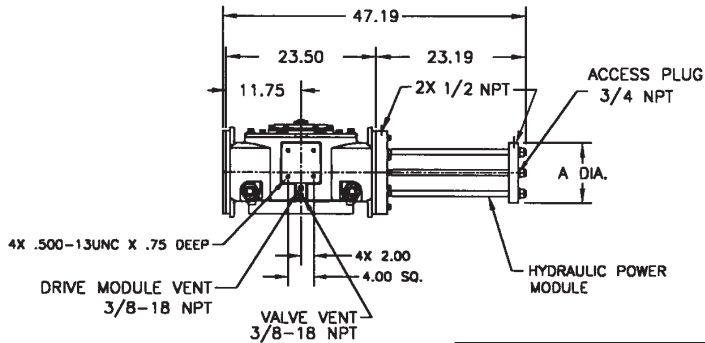
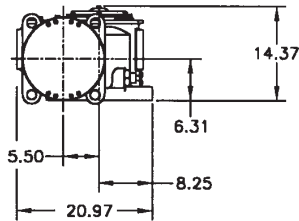


EMERSON™

Dimensions – (Hydraulic) In.

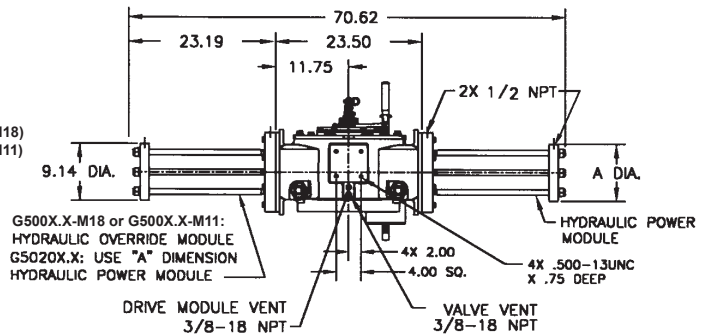
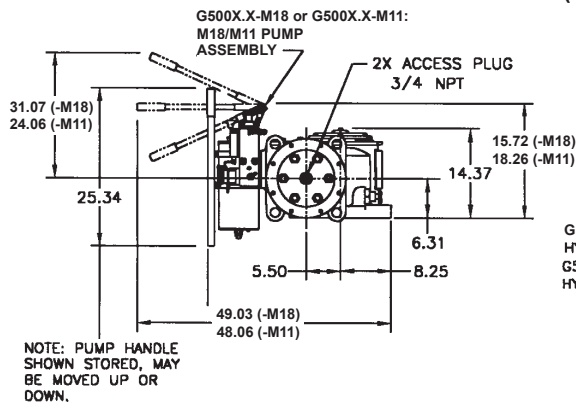
G/GC-Series

Double-Acting Actuators
G500X.X/GC500X.X (CW Model Shown)



Actuator Model	A
G5003.5/GC5003.5	7.63
G5004.0/GC5004.0	8.13
G5004.5/GC5004.5	8.63
G5005.0/GC5005.0	8.89
G5006.0/GC5006.0	9.75
G5007.0/GC5007.0	10.63
G5008.0/GC5008.0	11.88

G500X.X-M18/GC500X.X-M18
G500X.X-M11/GC500X.X-M11 or G5020X.X/GC5020X.X (No M18/M11) (CW Model Shown)



Actuator Model	A
G5003.5-M18/GC5003.5-M18	7.63
G5004.0-M18/GC5004.0-M18	8.13
G5004.5-M18/GC5004.5-M18	8.63
G5005.0-M18/GC5005.0-M18	8.89
G5006.0-M18/GC5006.0-M18	9.75
G5007.0-M18/GC5007.0-M18	10.63
G5008.0-M18/GC5008.0-M18	11.88

Actuator Model	A
G50203.5/GC50203.5	7.63
G50204.0/GC50204.0	8.13
G50204.5/GC50204.5	8.63
G50205.0/GC50205.0	8.89
G50206.0/GC50206.0	9.75
G50207.0/GC50207.0	10.63
G50208.0/GC50208.0	11.88

Note: Not Certified dimensional drawings. Such drawings available on request.
Contact factory with correct model designation and serial number.
All dimensions are expressed in inches.

* Dimension A remain the same in case -M11 in actuator model.

Data sheet

Sheet No.: GHI 3.18

Date: April 2020

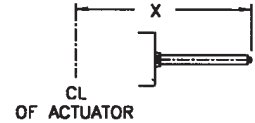
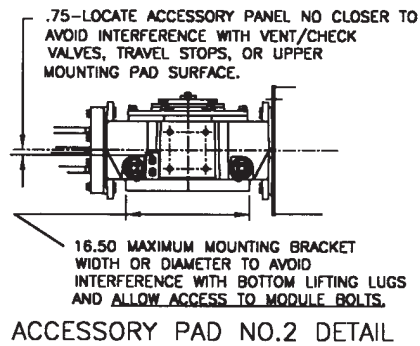
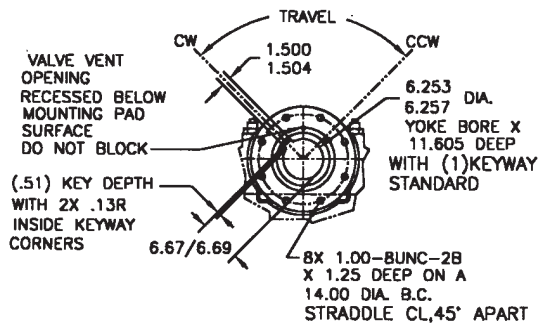
G/GC-Series

Dimensions – (Hydraulic) In.

G/GC-Series

Double-Acting Actuators
Valve/Accessory Mounting Details

Adjustable End Stops



	X Extended Travel Stop	X End Stop
Power Module	50.07	38.58
Blind End Cap Module	28.25	17.38
Spring Module	70.50	42.48

Note: Not Certified dimensional drawings. Such drawings available on request.
Contact factory with correct model designation and serial number.
All dimensions are expressed in inches.

BETTIS™


EMERSON™

Copyright © Emerson. The information in this document is subject to change without notice. Updated data sheets can be obtained from our website www.emerson.com/bettis or from your Emerson Automation Solutions - Actuation Technologies Center:
America's: +1 281 477 4100 Europe: +36 22 53 0950 Asia/Pacific: +65 67 77 8211 Middle East: +971 4 811 8100

Data sheet

Sheet No.: GHI 3.19

Date: April 2020

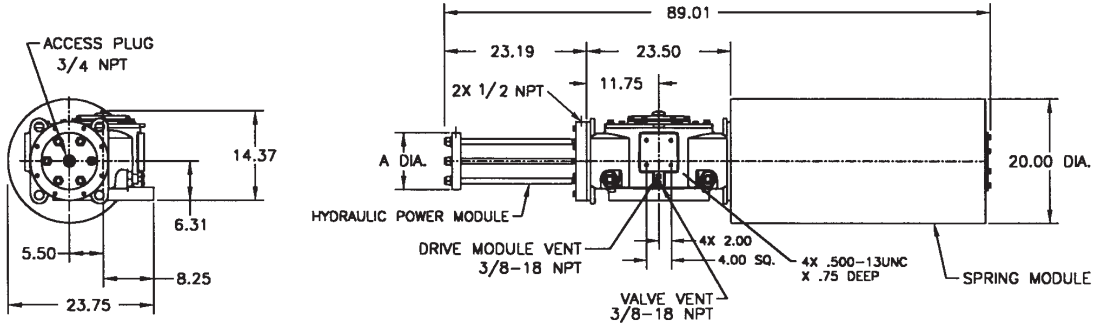
G/GC-Series

Dimensions – (Hydraulic) In.

G/GC-Series

Spring-Return Actuators

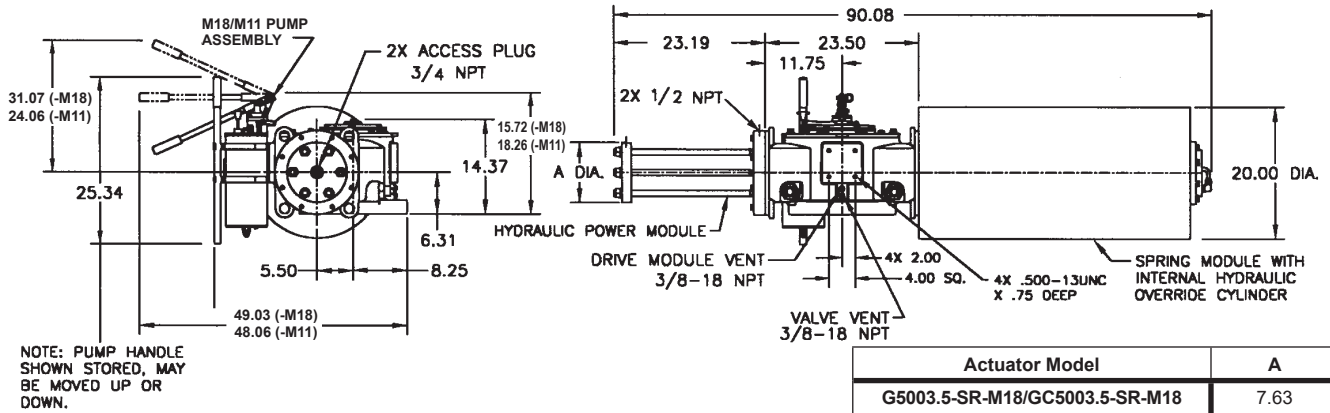
G500X.X-SR/GC500X.X-SR (CW Model Shown)



Actuator Model	A
G5003.5-SR/GC5003.5-SR	7.63
G5004.0-SR/GC5004.0-SR	8.13
G5004.5-SR/GC5004.5-SR	8.63
G5005.0-SR/GC5005.0-SR	8.89
G5006.0-SR/GC5006.0-SR	9.75
G5007.0-SR/GC5007.0-SR	10.63
G5008.0-SR/GC5008.0-SR	11.88

G500X.X-SR-M18/GC500X.X-SR-M18

G500X.X-SR-M11/GC500X.X-SR-M11 (CW Model Shown)



Actuator Model	A
G5003.5-SR-M18/GC5003.5-SR-M18	7.63
G5004.0-SR-M18/GC5004.0-SR-M18	8.13
G5004.5-SR-M18/GC5004.5-SR-M18	8.63
G5005.0-SR-M18/GC5005.0-SR-M18	8.89
G5006.0-SR-M18/GC5006.0-SR-M18	9.75
G5007.0-SR-M18/GC5007.0-SR-M18	10.63
G5008.0-SR-M18/GC5008.0-SR-M18	11.88

Note: Not Certified dimensional drawings. Such drawings available on request.
 Contact factory with correct model designation and serial number.
 All dimensions are expressed in inches.

* Dimension A remain the same in case -M11 in actuator model.

BETTIS™

EMERSON™

Data sheet

Sheet No.: GHI 3.20

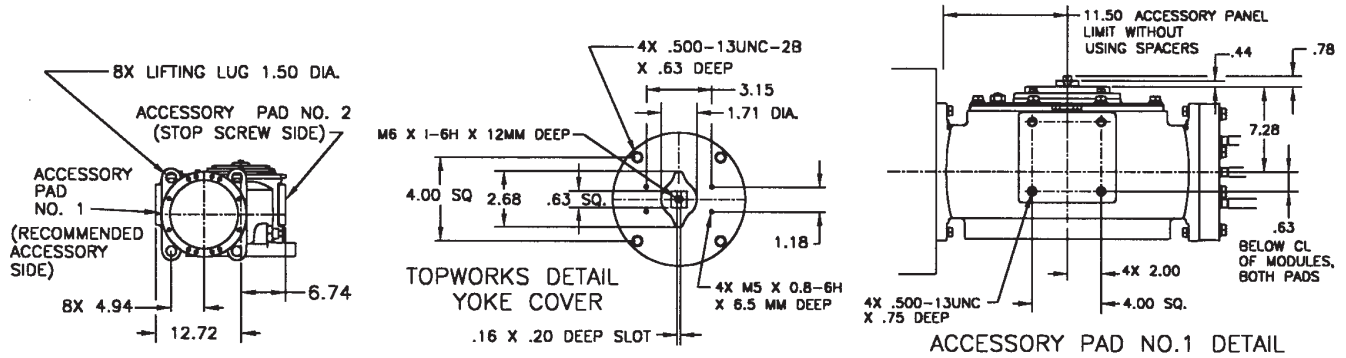
Date: April 2020

G/GC-Series

Dimensions – (Hydraulic) In.

G/GC-Series

Spring-Return Actuators
Lug/Accessory Details



Note: Not Certified dimensional drawings. Such drawings available on request.
Contact factory with correct model designation and serial number.
All dimensions are expressed in inches.

BETTIS™

Copyright © Emerson. The information in this document is subject to change without notice. Updated data sheets can be obtained from our website www.emerson.com/bettis or from your Emerson Automation Solutions - Actuation Technologies Center:
America's: +1 281 477 4100 Europe: +36 22 53 0950 Asia/Pacific: +65 67 77 8211 Middle East: +971 4 811 8100



EMERSON™

Data sheet

Sheet No.: GHI 3.21

Date: April 2020

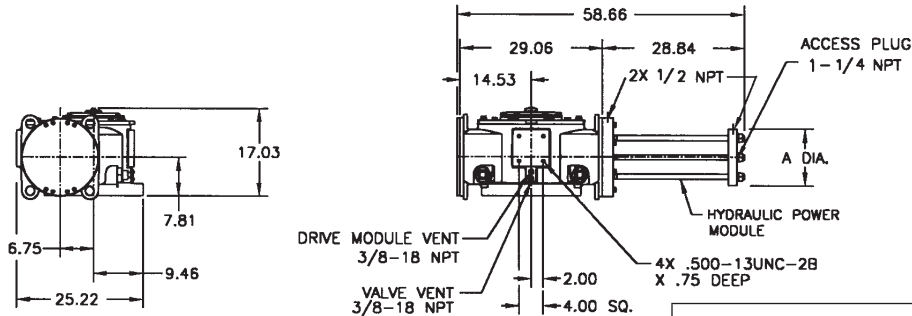
G/GC-Series

Dimensions – (Hydraulic) In.

G/GC-Series

Double-Acting Actuators

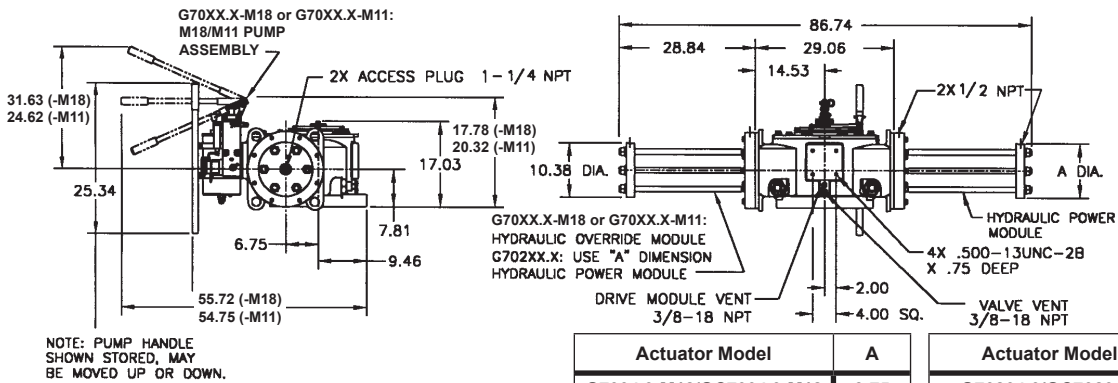
G70XX.X/GC70XX.X (CW Model Shown)



Actuator Model	A
G7004.0/GC7004.0	8.75
G7004.5/GC7004.5	9.25
G7005.0/GC7005.0	10.00
G7006.0/GC7006.0	10.38
G7007.0/GC7007.0	11.38
G7008.0/GC7008.0	12.12
G7009.0/GC7009.0	13.38
G7010.0/GC7010.0	14.12

G70XX.X-M18/GC70XX.X-M18

G70XX.X-M11/GC70XX.X-M11 or G702XX.X/GC702XX.X (No M18/M11) (CW Model Shown)



NOTE: PUMP HANDLE SHOWN STORED, MAY BE MOVED UP OR DOWN.

Actuator Model	A	Actuator Model	A
G7004.0-M18/GC7004.0-M18	8.75	G70204.0/GC70204.0	8.75
G7004.5-M18/GC7004.5-M18	9.25	G70204.5/GC70204.5	9.25
G7005.0-M18/GC7005.0-M18	10.00	G70205.0/GC70205.0	10.00
G7006.0-M18/GC7006.0-M18	10.38	G70206.0/GC70206.0	10.38
G7007.0-M18/GC7007.0-M18	11.38	G70207.0/GC70207.0	11.38
G7008.0-M18/GC7008.0-M18	12.12	G70208.0/GC70208.0	12.12
G7009.0-M18/GC7009.0-M18	13.38	G70209.0/GC70209.0	13.38
G7010.0-M18/GC7010.0-M18	14.12	G70210.0/GC70210.0	14.12

Note: Not Certified dimensional drawings. Such drawings available on request. Contact factory with correct model designation and serial number. All dimensions are expressed in inches.

* Dimension A remain the same in case -M11 in actuator model.

BETTIS™

EMERSON™

Copyright © Emerson. The information in this document is subject to change without notice. Updated data sheets can be obtained from our website www.emerson.com/bettis or from your Emerson Automation Solutions - Actuation Technologies Center:
 America's: +1 281 477 4100 Europe: +36 22 53 0950 Asia/Pacific: +65 67 77 8211 Middle East: +971 4 811 8100

Data sheet

Sheet No.: GHI 3.22

Date: April 2020

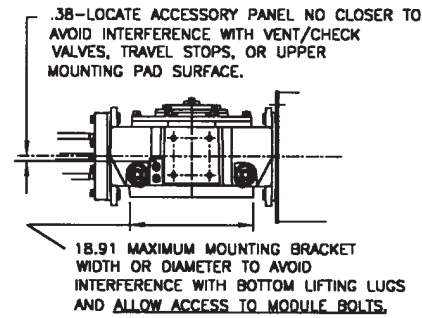
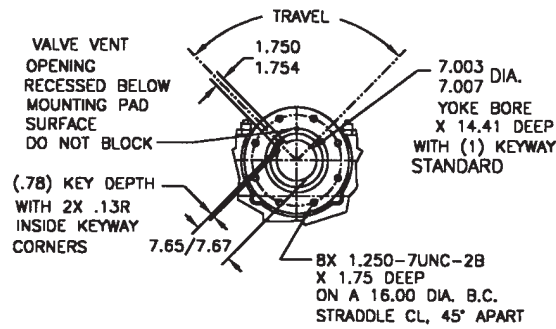
G/GC-Series

Dimensions – (Hydraulic) In.

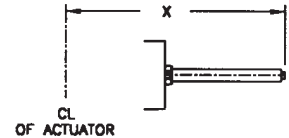
G/GC-Series

Double-Acting Actuators
Valve/Accessory Mounting Details

Adjustable End Stops



ACCESSORY PAD NO.2 DETAIL



	X Extended Travel Stop	X End Stop
Power Module	60.97	46.72
Blind End Cap Module	35.53	21.28
Spring Module	91.10	54.44

Note: Not Certified dimensional drawings. Such drawings available on request.
Contact factory with correct model designation and serial number.
All dimensions are expressed in inches.

BETTIS™


EMERSON™

Data sheet

Sheet No.: GHI 3.23

Date: April 2020

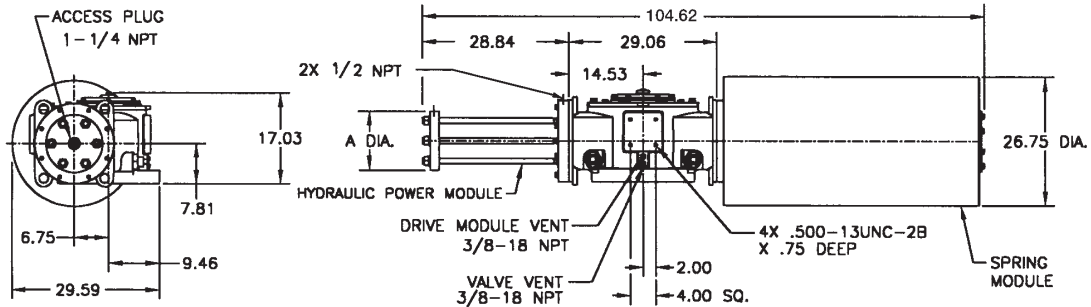
G/GC-Series

Dimensions – (Hydraulic) In.

G/GC-Series

Spring-Return Actuators

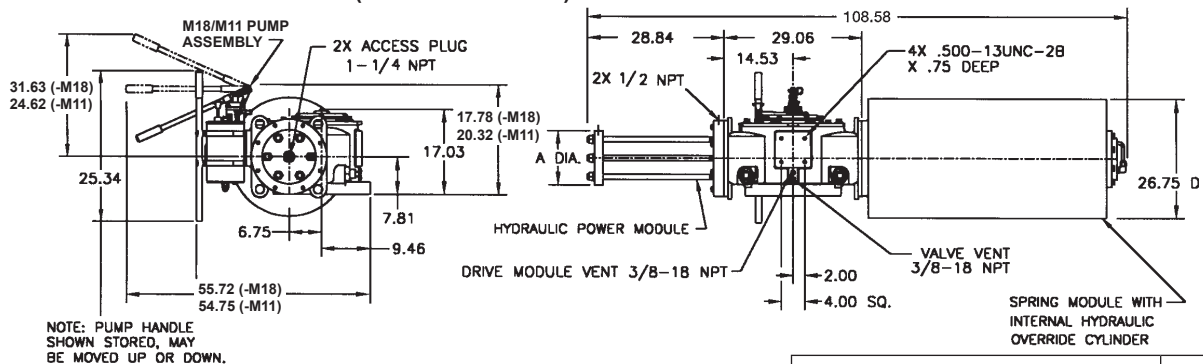
G70XX.X-SR/GC70XX.X-SR (CW Model Shown)



Actuator Model	A
G7004.0-SR/GC7004.0-SR	8.75
G7004.5-SR/GC7004.5-SR	9.25
G7005.0-SR/GC7005.0-SR	10.00
G7006.0-SR/GC7006.0-SR	10.38
G7007.0-SR/GC7007.0-SR	11.38
G7008.0-SR/GC7008.0-SR	12.12
G7009.0-SR/GC7009.0-SR	13.38
G7010.0-SR/GC7010.0-SR	14.12

G70XX.X-SR-M18/GC70XX.X-SR-M18

G70XX.X-SR-M11/GC70XX.X-SR-M11 (CW Model Shown)



Actuator Model	A
G7004.0-SR-M18/GC7004.0-SR-M18	8.75
G7004.5-SR-M18/GC7004.5-SR-M18	9.25
G7005.0-SR-M18/GC7005.0-SR-M18	10.00
G7006.0-SR-M18/GC7006.0-SR-M18	10.38
G7007.0-SR-M18/GC7007.0-SR-M18	11.38
G7008.0-SR-M18/GC7008.0-SR-M18	12.12
G7009.0-SR-M18/GC7009.0-SR-M18	13.38
G7010.0-SR-M18/GC7010.0-SR-M18	14.12

Note: Not Certified dimensional drawings. Such drawings available on request.
Contact factory with correct model designation and serial number.
All dimensions are expressed in inches.

* Dimension A remain the same in case -M11 in actuator model.

BETTIS™

EMERSON™

Data sheet

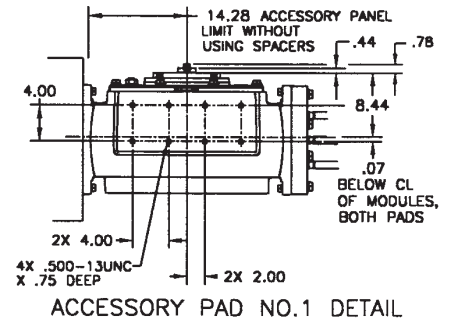
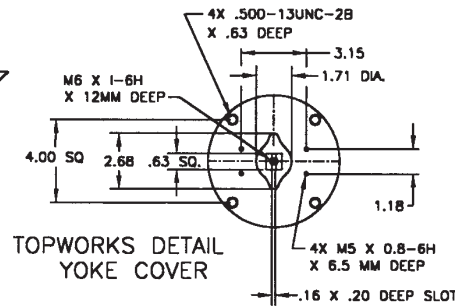
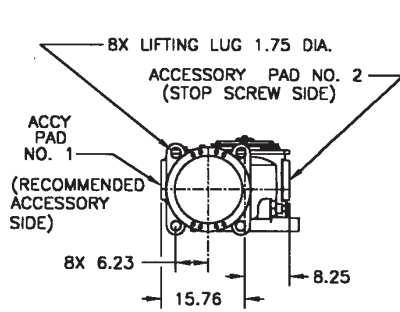
Sheet No.: GHI 3.24

Date: April 2020

G/GC-Series

Dimensions – (Hydraulic) In. G/GC-Series

Spring-Return Actuators
Lug/Accessory Details



Note: Not Certified dimensional drawings. Such drawings available on request.
Contact factory with correct model designation and serial number.
All dimensions are expressed in inches.

BETTIS[™]

Copyright © Emerson. The information in this document is subject to change without notice. Updated data sheets can be obtained from our website www.emerson.com/bettis or from your Emerson Automation Solutions - Actuation Technologies Center:
America's: +1 281 477 4100 Europe: +36 22 53 0950 Asia/Pacific: +65 67 77 8211 Middle East: +971 4 811 8100



EMERSON[™]

Data sheet

Sheet No.: GHI 3.25

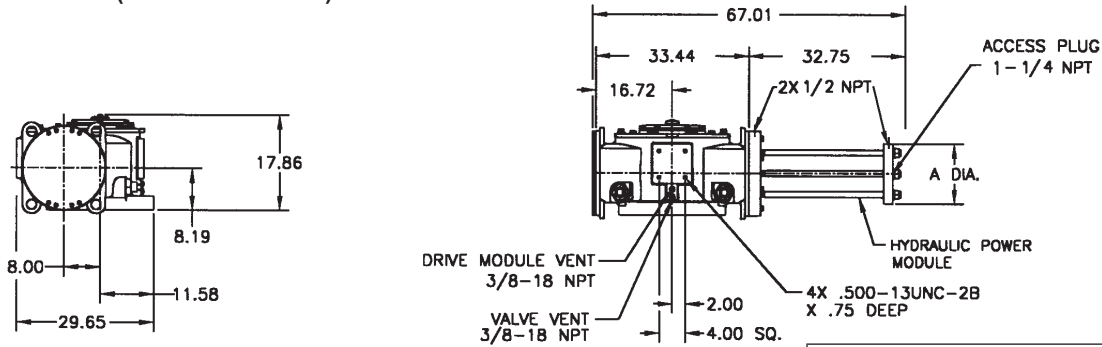
Date: April 2020

G/GC-Series

Dimensions – (Hydraulic) In.

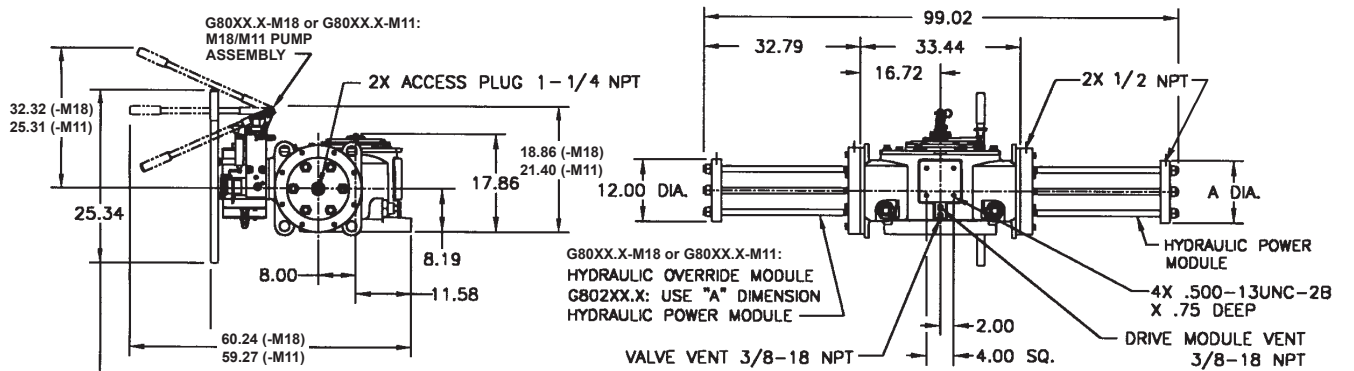
G/GC-Series

Double-Acting Actuators
G80XX.X/GC80XX.X (CW Model Shown)



Actuator Model	A
G8005.0/GC8005.0	9.75
G8006.0/GC8006.0	11.50
G8007.0/GC8007.0	12.00
G8008.0/GC8008.0	12.50
G8009.0/GC8009.0	13.50
G8010.0/GC8010.0	14.25
G8012.0/GC8012.0	16.75

G80XX.X-M18/GC80XX.X-M18
G80XX.X-M11/GC80XX.X-M11 or G802XX.X/GC802XX.X (No M18/M11) (CW Model Shown)



NOTE: PUMP HANDLE SHOWN STORED, MAY BE MOVED UP OR DOWN.

Actuator Model	A	Actuator Model	A
G8005.0-M18/GC8005.0-M18	9.75	G80205.0/GC80205.0	9.75
G8006.0-M18/GC8006.0-M18	11.50	G80206.0/GC80206.0	11.50
G8007.0-M18/GC8007.0-M18	12.00	G80207.0/GC80207.0	11.75
G8008.0-M18/GC8008.0-M18	12.50	G80208.0/GC80208.0	12.50
G8009.0-M18/GC8009.0-M18	13.50	G80209.0/GC80209.0	13.50
G8010.0-M18/GC8010.0-M18	14.25	G80210.0/GC80210.0	14.25
G8012.0-M18/GC8012.0-M18	16.75	G80212.0/GC80212.0	16.75

Note: Not Certified dimensional drawings. Such drawings available on request. Contact factory with correct model designation and serial number. All dimensions are expressed in inches.

* Dimension A remain the same in case -M11 in actuator model.

BETTIS™

EMERSON™

Data sheet

Sheet No.: GHI 3.26

Date: April 2020

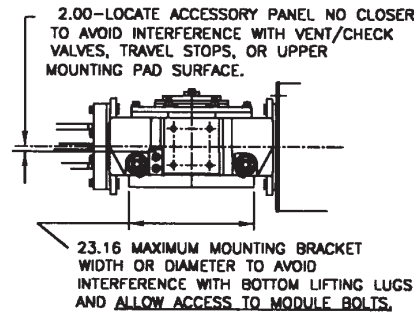
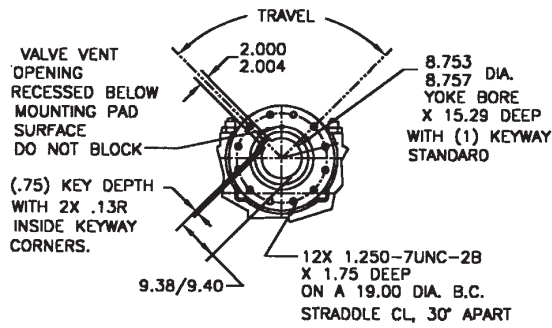
G/GC-Series

Dimensions – (Hydraulic) In.

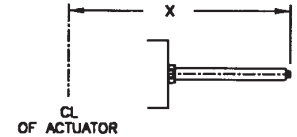
G/GC-Series

Double-Acting Actuators
Valve/Accessory Mounting Details

Adjustable End Stops



ACCESSORY PAD NO.2 DETAIL



	X Extended Travel Stop	X End Stop
Power Module	70.94	54.39
Blind End Cap Module	40.66	24.92
Spring Module	112.04	71.00

Note: Not Certified dimensional drawings. Such drawings available on request.
Contact factory with correct model designation and serial number.
All dimensions are expressed in inches.

BETTIS™



EMERSON™

Copyright © Emerson. The information in this document is subject to change without notice. Updated data sheets can be obtained from our website www.emerson.com/bettis or from your Emerson Automation Solutions - Actuation Technologies Center:
America's: +1 281 477 4100 Europe: +36 22 53 0950 Asia/Pacific: +65 67 77 8211 Middle East: +971 4 811 8100

Data sheet

Sheet No.: GHI 3.27

Date: April 2020

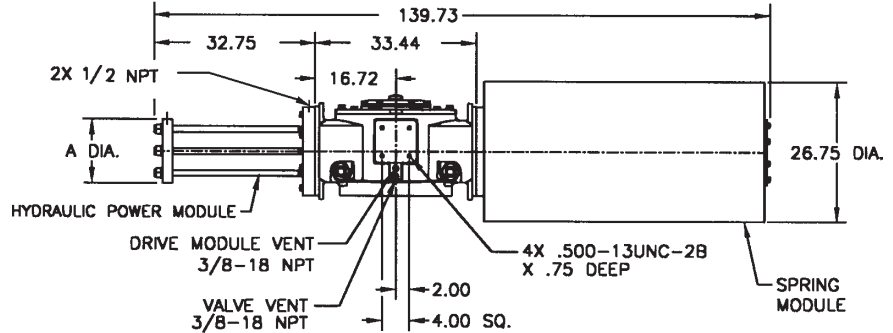
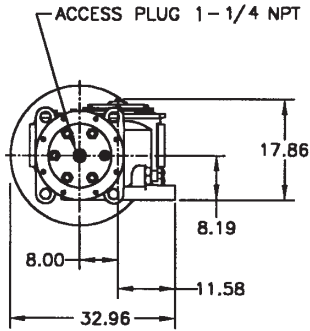
G/GC-Series

Dimensions – (Hydraulic) In.

G/GC-Series

Spring-Return Actuators

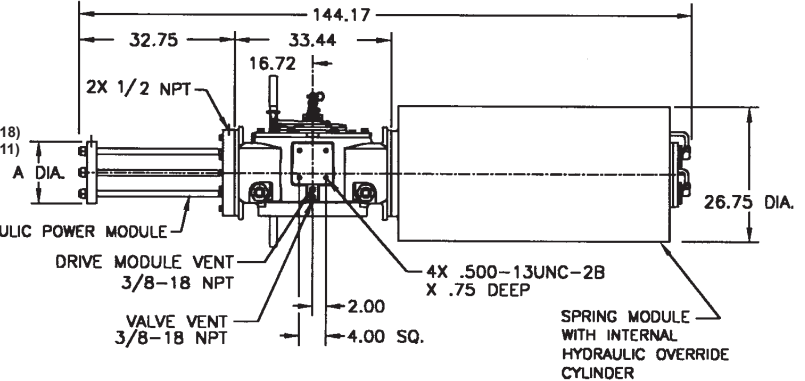
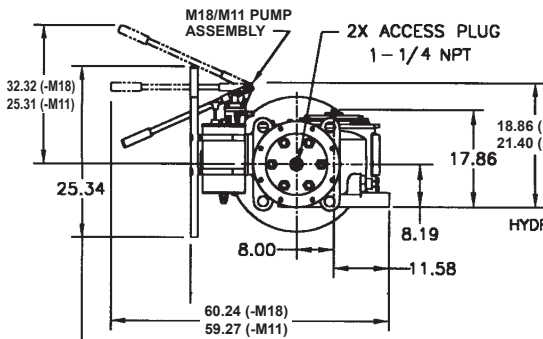
G80XX.X-SR/GC80XX.X-SR (CW Model Shown)



Actuator Model	A
G8005.0-SR/GC8005.0-SR	9.75
G8006.0-SR/GC8006.0-SR	11.50
G8007.0-SR/GC8007.0-SR	12.00
G8008.0-SR/GC8008.0-SR	12.50
G8009.0-SR/GC8009.0-SR	13.50
G8010.0-SR/GC8010.0-SR	14.25
G8012.0-SR/GC8012.0-SR	16.75

G80XX.X-SR-M18/GC80XX.X-SR-M18

G80XX.X-SR-M11/GC80XX.X-SR-M11 (CW Model Shown)



NOTE: PUMP HANDLE SHOWN STORED, MAY BE MOVED UP OR DOWN.

Actuator Model	A
G8005.0-SR-M18/GC8005.0-SR-M18	9.75
G8006.0-SR-M18/GC8006.0-SR-M18	11.50
G8007.0-SR-M18/GC8007.0-SR-M18	12.00
G8008.0-SR-M18/GC8008.0-SR-M18	12.50
G8009.0-SR-M18/GC8009.0-SR-M18	13.50
G8010.0-SR-M18/GC8010.0-SR-M18	14.25
G8012.0-SR-M18/GC8012.0-SR-M18	16.75

Note: Not Certified dimensional drawings. Such drawings available on request. Contact factory with correct model designation and serial number. All dimensions are expressed in inches.

* Dimension A remain the same in case -M11 in actuator model.

BETTIS™

EMERSON™

Data sheet

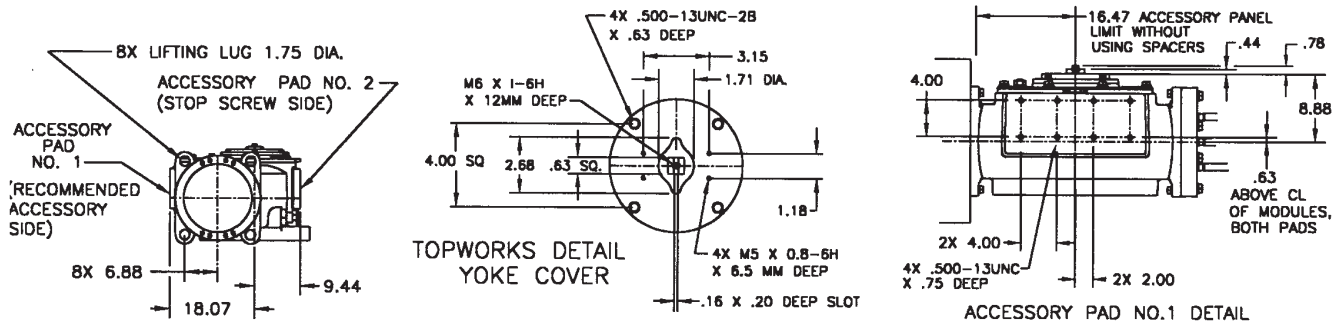
Sheet No.: GHI 3.28

Date: April 2020

G/GC-Series

Dimensions – (Hydraulic) In. G/GC-Series

Spring-Return Actuators
Lug/Accessory Details



Note: Not Certified dimensional drawings. Such drawings available on request.
Contact factory with correct model designation and serial number.
All dimensions are expressed in inches.

BETTIS[™]

Copyright © Emerson. The information in this document is subject to change without notice. Updated data sheets can be obtained from our website www.emerson.com/bettis or from your Emerson Automation Solutions - Actuation Technologies Center:
America's: +1 281 477 4100 Europe: +36 22 53 0950 Asia/Pacific: +65 67 77 8211 Middle East: +971 4 811 8100


EMERSON[™]

Data sheet

Sheet No.: GHI 3.29

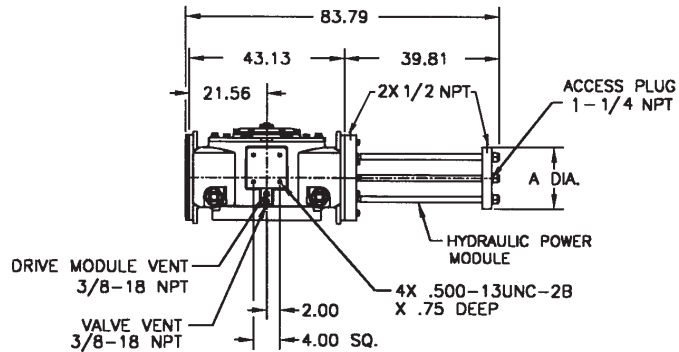
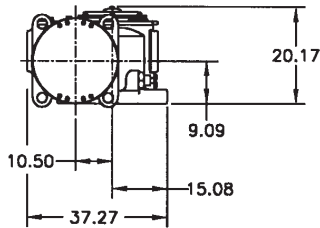
Date: April 2020

G/GC-Series

Dimensions – (Hydraulic) In.

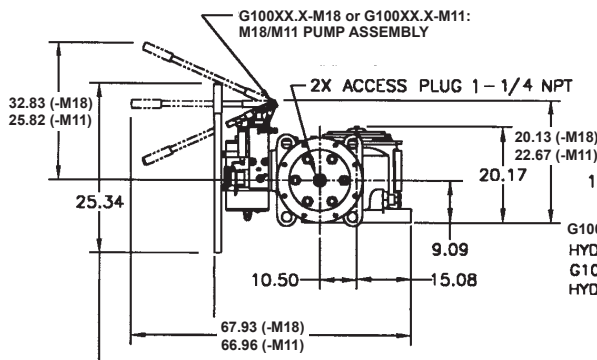
G/GC-Series

Double-Acting Actuators
G100XX.X/GC100XX.X (CW Model Shown)

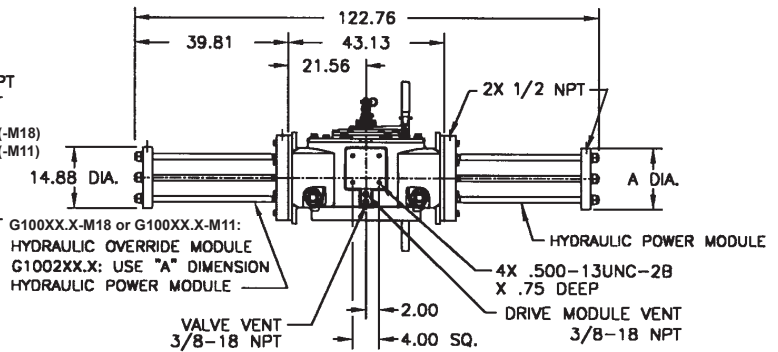


Actuator Model	A
G10006.0/GC10006.0	12.16
G10007.0/GC10007.0	13.13
G10008.0/GC10008.0	13.88
G10009.0/GC10009.0	14.88
G10010.0/GC10010.0	15.88
G10012.0/GC10012.0	17.88
G10014.0/GC10014.0	19.88

G100XX.X-M18/GC100XX.X-M18
G100XX.X-M11/GC100XX.X-M11 or G1002XX.X/GC1002XX.X (No M18/M11) (CW Model Shown)



NOTE: PUMP HANDLE SHOWN STORED, MAY BE MOVED UP OR DOWN.



Actuator Model	A
G10006.0-M18/GC10006.0-M18	12.16
G10007.0-M18/GC10007.0-M18	13.13
G10008.0-M18/GC10008.0-M18	13.88
G10009.0-M18/GC10009.0-M18	14.88
G10010.0-M18/GC10010.0-M18	15.88
G10012.0-M18/GC10012.0-M18	17.88
G10014.0-M18/GC10014.0-M18	19.88

Actuator Model	A
G100206.0/GC100206.0	12.16
G100207.0/GC100207.0	13.13
G100208.0/GC100208.0	13.88
G100209.0/GC100209.0	14.88
G100210.0/GC100210.0	15.88
G100212.0/GC100212.0	17.88
G100214.0/GC100214.0	19.88

Note: Not Certified dimensional drawings. Such drawings available on request. Contact factory with correct model designation and serial number. All dimensions are expressed in inches.

* Dimension A remain the same in case -M11 in actuator model.

BETTIS™

EMERSON™

Data sheet

Sheet No.: GHI 3.30

Date: April 2020

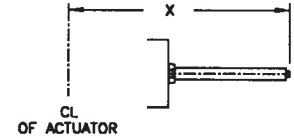
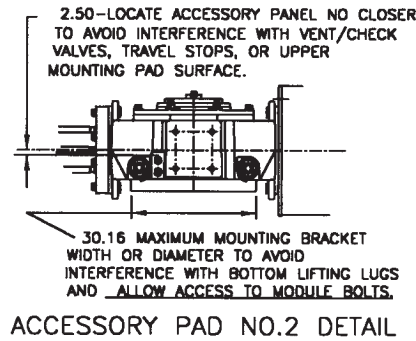
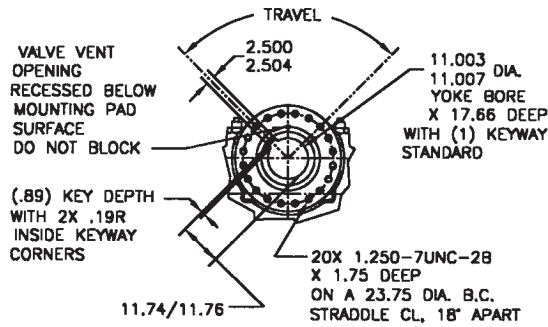
G/GC-Series

Dimensions – (Hydraulic) In.

G/GC-Series

Double-Acting Actuators
Valve/Accessory Mounting Details

Adjustable End Stops



	X Extended Travel Stop	X End Stop
Power Module	89.08	80.08
Blind End Cap Module	C/F	C/F
Spring Module	C/F	C/F

C/F Consult Factory

Note: Not Certified dimensional drawings. Such drawings available on request.
Contact factory with correct model designation and serial number.
All dimensions are expressed in inches.

BETTIS™

EMERSON™

Copyright © Emerson. The information in this document is subject to change without notice. Updated data sheets can be obtained from our website www.emerson.com/bettis or from your Emerson Automation Solutions - Actuation Technologies Center:
America's: +1 281 477 4100 Europe: +36 22 53 0950 Asia/Pacific: +65 67 77 8211 Middle East: +971 4 811 8100

Data sheet

Sheet No.: GHI 3.31

Date: April 2020

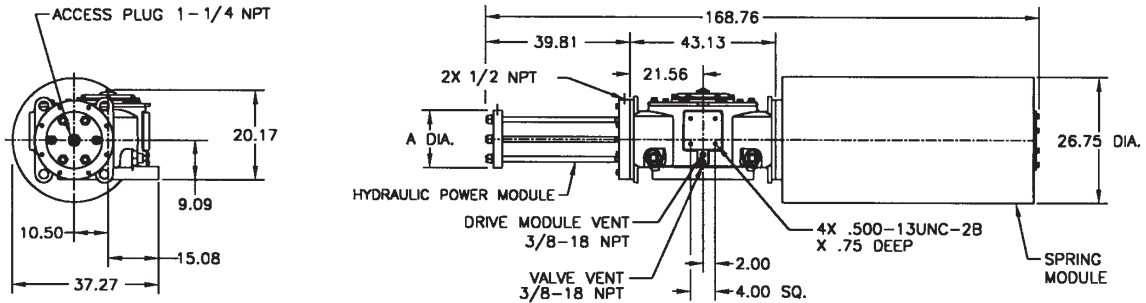
G/GC-Series

Dimensions – (Hydraulic) In.

G/GC-Series

Spring-Return Actuators

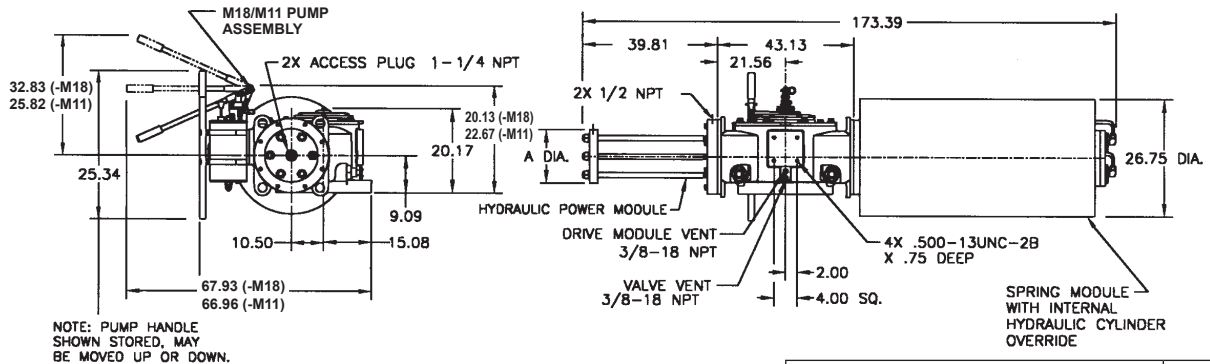
G100XX.X-SR/GC100XX.X-SR (CW Model Shown)



Actuator Model	A
G10006.0-SR/GC10006.0-SR	12.16
G10007.0-SR/GC10007.0-SR	13.13
G10008.0-SR/GC10008.0-SR	13.88
G10009.0-SR/GC10009.0-SR	14.88
G10010.0-SR/GC10010.0-SR	15.88
G10012.0-SR/GC10012.0-SR	17.88
G10014.0-SR/GC10014.0-SR	19.88

G100XX.X-SR-M18/GC100XX.X-SR-M18

G100XX.X-SR-M11/GC100XX.X-SR-M11 (CW Model Shown)



Actuator Model	A
G10006.0-SR-M18/GC10006.0-SR-M18	12.16
G10007.0-SR-M18/GC10007.0-SR-M18	13.13
G10008.0-SR-M18/GC10008.0-SR-M18	13.88
G10009.0-SR-M18/GC10009.0-SR-M18	14.88
G10010.0-SR-M18/GC10010.0-SR-M18	15.88
G10012.0-SR-M18/GC10012.0-SR-M18	17.88
G10014.0-SR-M18/GC10014.0-SR-M18	19.88

Note: Not Certified dimensional drawings. Such drawings available on request.
 Contact factory with correct model designation and serial number.
 All dimensions are expressed in inches.

* Dimension A remain the same in case -M11 in actuator model.

BETTIS™

EMERSON™

Data sheet

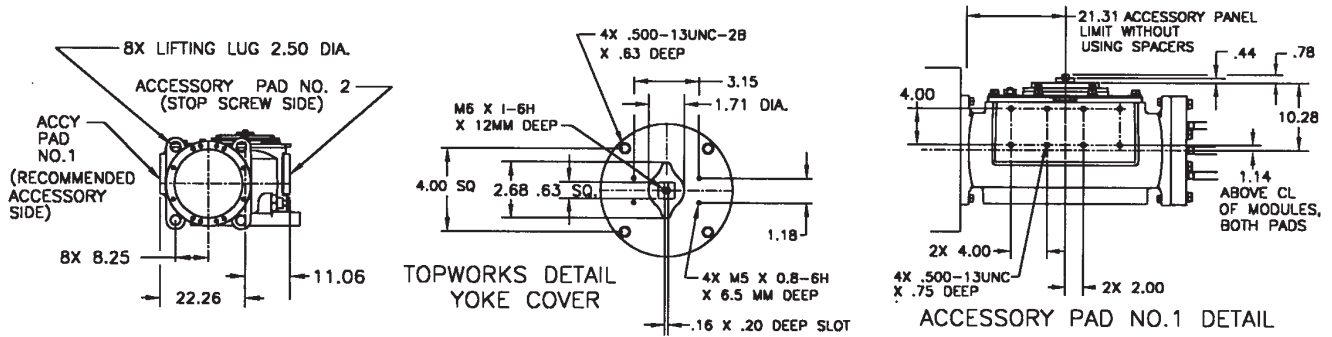
Sheet No.: GHI 3.32

Date: April 2020

G/GC-Series

Dimensions – (Hydraulic) In. G/GC-Series

Spring-Return Actuators
Lug/Accessory Details



Note: Not Certified dimensional drawings. Such drawings available on request.
Contact factory with correct model designation and serial number.
All dimensions are expressed in inches.

BETTIS™


EMERSON™

Copyright © Emerson. The information in this document is subject to change without notice. Updated data sheets can be obtained from our website www.emerson.com/bettis or from your Emerson Automation Solutions - Actuation Technologies Center:
America's: +1 281 477 4100 Europe: +36 22 53 0950 Asia/Pacific: +65 67 77 8211 Middle East: +971 4 811 8100

World Area Configuration Centers (WACC) offer sales support, service, inventory and commissioning to our global customers. Choose the WACC or sales office nearest you:

NORTH & SOUTH AMERICA

19200 Northwest Freeway
Houston TX 77065
USA
T +1 281 477 4100

Av. Hollingsworth
325 Iporanga Sorocaba
SP 18087-105
Brazil
T +55 15 3413 8888

ASIA PACIFIC

No. 9 Gul Road
#01-02 Singapore 629361
T +65 6777 8211

No. 1 Lai Yuan Road
Wuqing Development Area
Tianjin 301700
P. R. China
T +86 22 8212 3300

MIDDLE EAST & AFRICA

P. O. Box 17033
Jebel Ali Free Zone
Dubai
T +971 4 811 8100

P. O. Box 10305
Jubail 31961
Saudi Arabia
T +966 3 340 8650

24 Angus Crescent
Longmeadow Business Estate East
P.O. Box 6908 Greenstone
1616 Modderfontein Extension 5
South Africa
T +27 11 451 3700

EUROPE

Holland Fasor 6
Székesfehérvár 8000
Hungary
T +36 22 53 09 50

Strada Biffi 165
29017 Fiorenzuola d'Arda (PC)
Italy
T +39 0523 944 411

For complete list of sales and manufacturing sites, please visit www.emerson.com/actuationtechnologieslocations or contact us at info.actuationtechnologies@emerson.com

www.emerson.com/bettis

VCPDS-13949-EN ©2020 Emerson. All rights reserved.

The Emerson logo is a trademark and service mark of Emerson Electric Co. Bettis™ is a mark of one of the Emerson family of companies. All other marks are property of their respective owners.

The contents of this publication are presented for information purposes only, and while every effort has been made to ensure their accuracy, they are not to be construed as warranties or guarantees, express or implied, regarding the products or services described herein or their use or applicability. All sales are governed by our terms and conditions, which are available on request. We reserve the right to modify or improve the designs or specifications of our products at any time without notice.

BETTIS™

Copyright © Emerson. The information in this document is subject to change without notice. Updated data sheets can be obtained from our website www.emerson.com/bettis or from your Emerson Automation Solutions - Actuation Technologies Center:
America's: +1 281 477 4100 **Europe:** +36 22 53 0950 **Asia/Pacific:** +65 67 77 8211 **Middle East:** +971 4 811 8100


EMERSON™