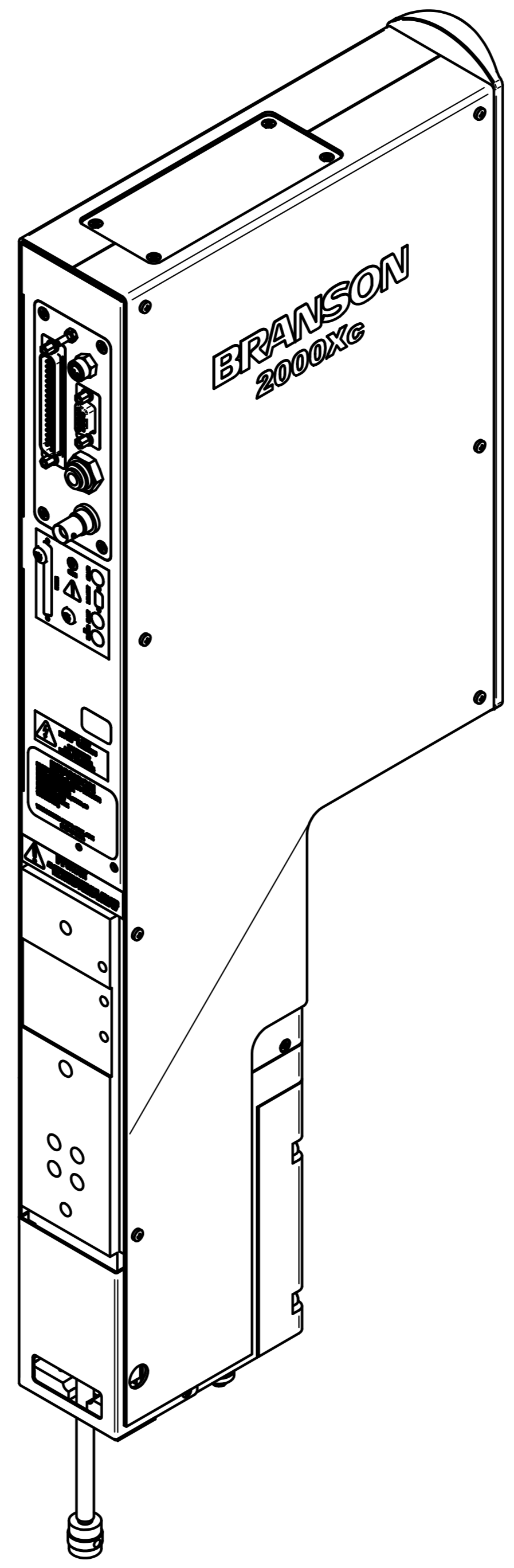
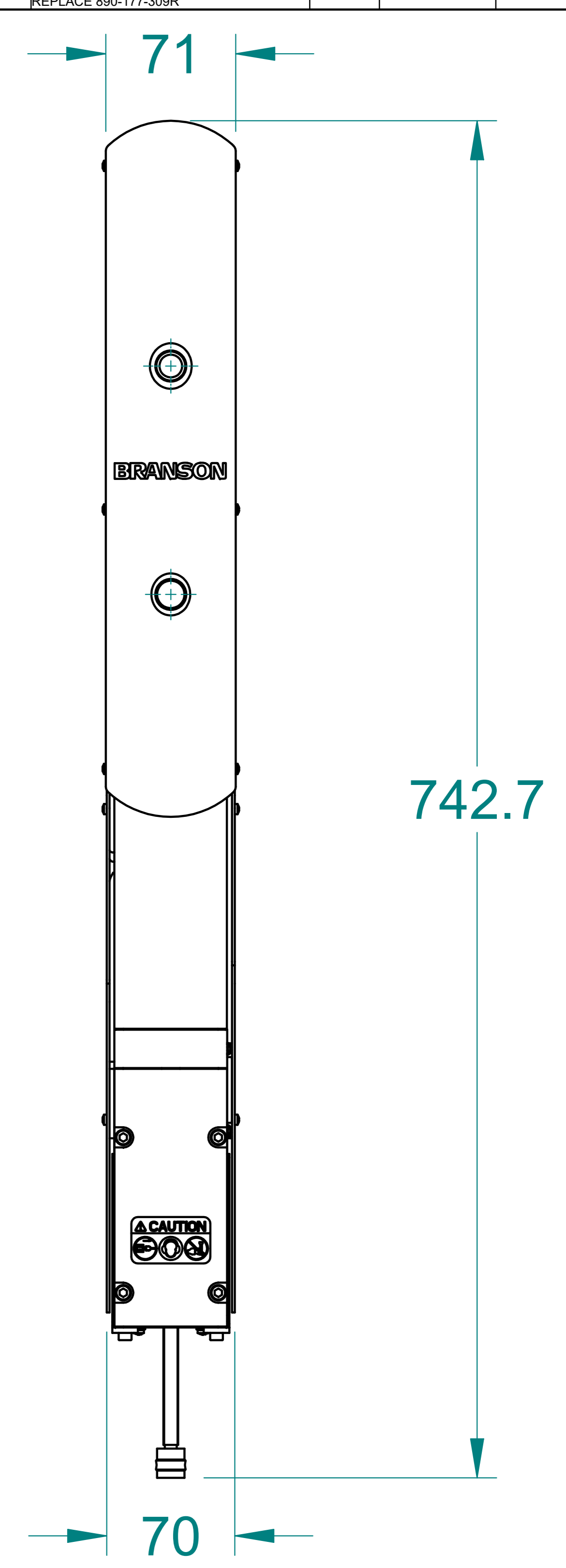
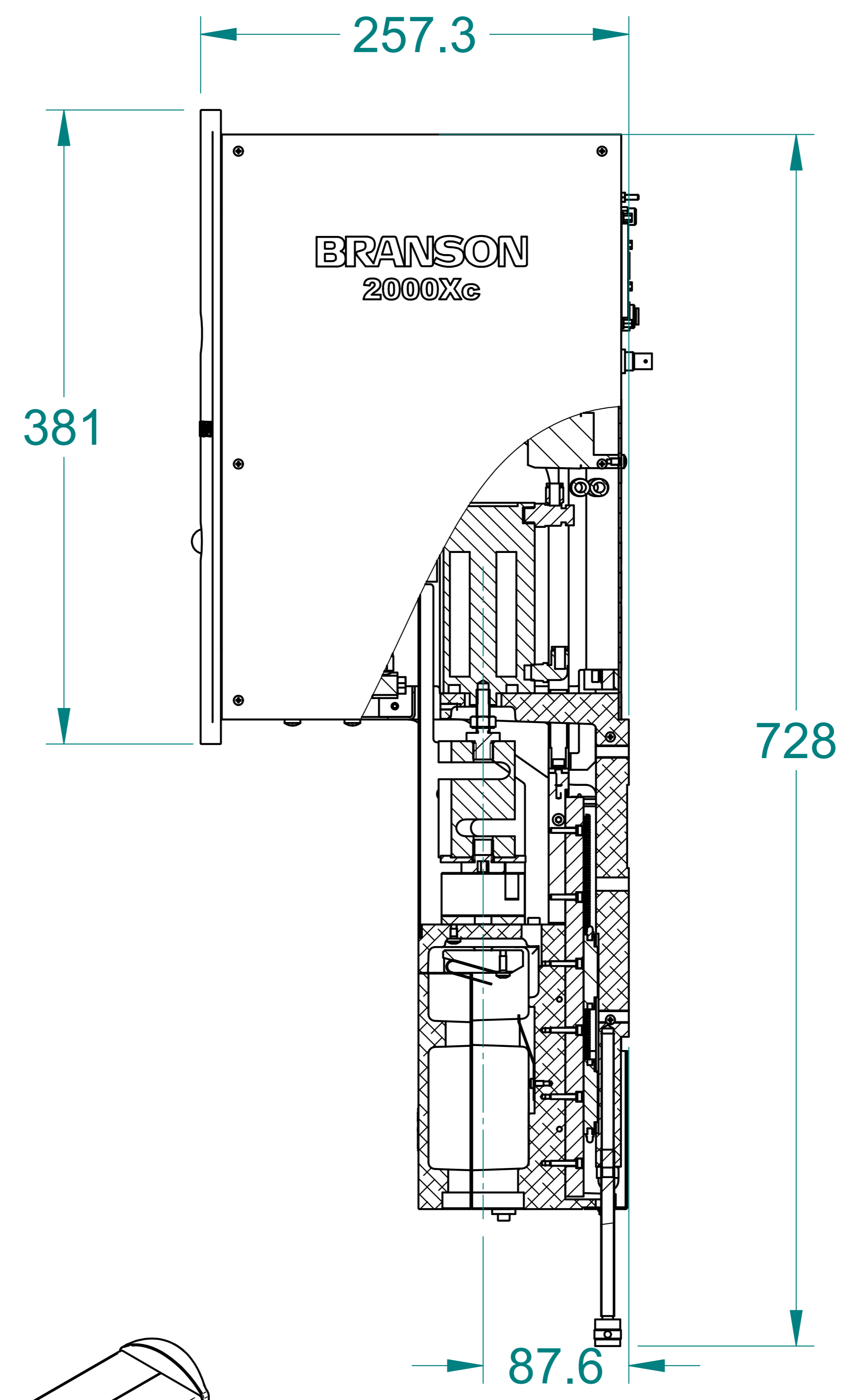
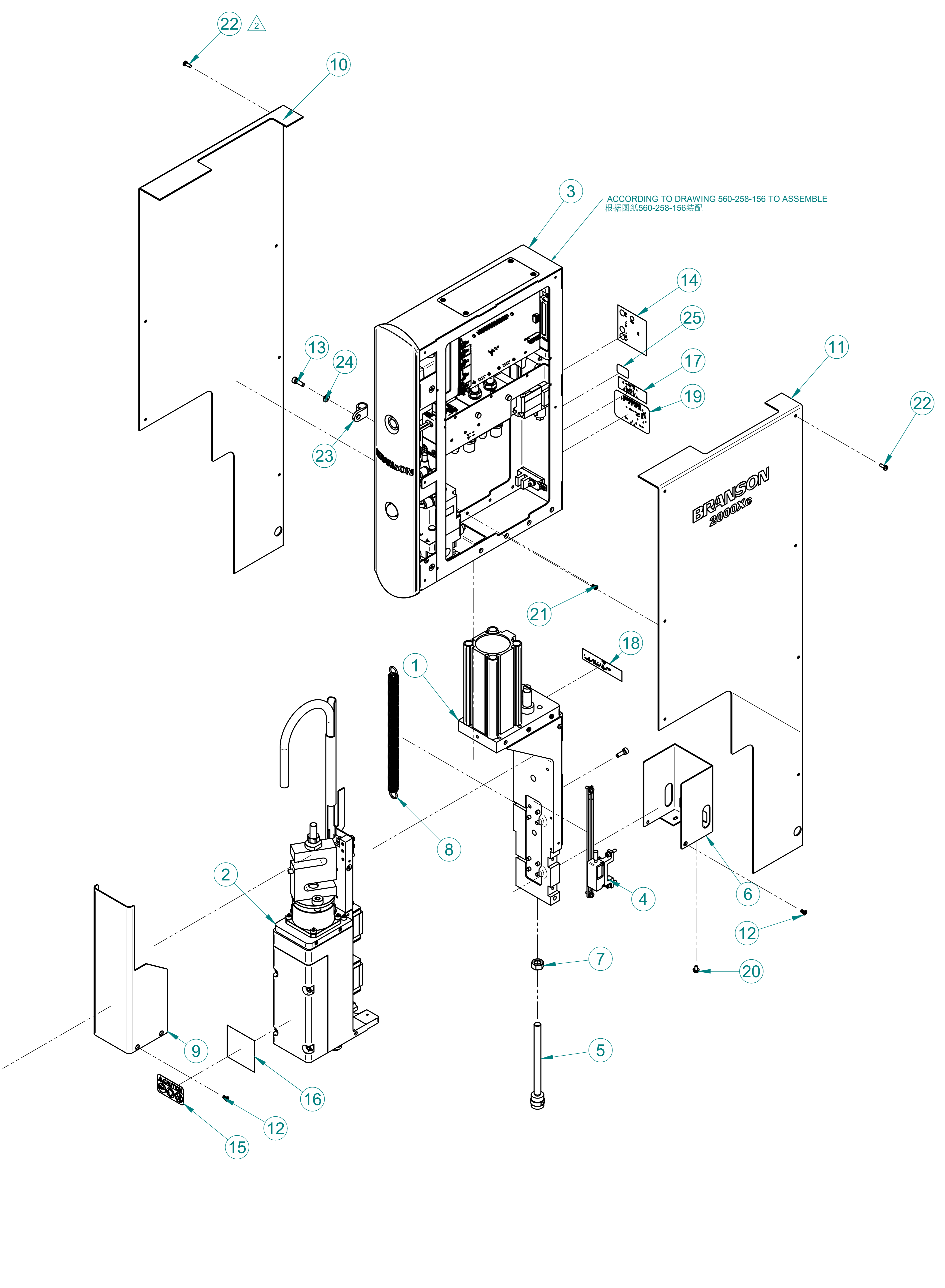


ZONE	REV	DESCRIPTION	DATE	ECN/ECO	DRAWN	APPR.
F9	01	CHANGE LABEL TO 100-065-1028	2018/4/11	PW-18-002	BRANT P	EMILY L
L12	02	CHANGE SCREW EDP# USING 890-178-026R REPLACE 890-177-359R	2018/11/13	CR-101549	P.QI	E.LIU



NO	ITEM ID.	DESCRIPTION_C	DESCRIPTION	QTY.	MATERIAL	REMARK
25	100-065-867		LABEL CE WHT BKGD/BLK COPY	1	(None)	
24	890-058-123R	GB97.1-85平垫圈A/D ZnV4,QXH	WASHER FLAT M4 STL ZINC	1		
23	200-024-045		CLAMP 5150 420	1	(None)	
22	890-178-026R		SCR PHH M3x6 PHH STL-Z	14		
21	200-298-325			8	(None)	
20	890-179-905	assembly_g5_1 8074_4_m3x6	SCR INSTRUMENT M3X6 D.Zn(W)EC 20kHz	2		
19	570-023-573	铭牌	LABEL NAME PLATE 2000XC MICRO	1		
18	100-065-1028		LABEL IMPORTANT AIR SUPPLY	1	SEE NOTES	
17	100-065-824R		LABEL WARNING GROUND/DISCONNECT	1		
16	100-065-926		LABEL WARNING HIGH VOLTAGE	1	SEE NOTE 1	
15	570-023-575		LABEL WARNING 2000XC MICRO	1	SEE NOTE 1.	
14	570-023-571		LABEL INTERCONNECT TAG ACT	2		
13	890-177-351R	GB70-85内六角圆柱头螺钉 不锈钢 Mx12	SCR CAP M4X12 SOC SST	9		
12	890-177-331		SCR FLH M3-0.5x6 PHH STL-B,2000Xc Micro	6	(None)	
11	580-101-193	右盖板	COVER RIGHT 2000XC MICRO	1		
10	580-101-192	左盖板	COVER LEFT 2000XC MICRO	1	Aluminum, 5052	
9	570-278-050	load cell 防护罩	GUARD LOAD CELL 2000Xc Micro	1	ST12	
8	J183-095-0001	拉伸弹簧	SPRING 1.7XLINE12.5XFREE 187mm	1		
7	890-173-550		GB/T6710-2000 NUT HEX ZN M8x1	1	STRUCTURAL STEEL	
6	580-101-191	外壳	COVER REAR 2000XC MICRO	1	ST12	
5	580-103-031	限位螺栓	STOP MECHANICAL 2000Xc Micro	1	Stainless Steel, 304	
4	560-087-150	光尺组件, 2000XC MICRO	ASSY ENCODER 2000XC MICRO	1		
3	560-258-156	上部箱体	ASSY BOX OPERATION UPPER 2000XC MICRO	1		
2	560-212-010	Assy Carriage/Carriage Door	ASSY CARRIAGE 2000XC MICRO	1		
1	500-243-020	托架组件 q32	ASSY SUPPORT ACTUATOR 2000XC MICRO DIA40	1		

SECONDRY DIMENSIONS ARE PROVIDED FOR REFERENCE ONLY

1ST ANGLE PROJECTION

Material Spec. Error No reference

FINISH: Error No reference

APPROVED: E.LIU 9/21/17

SCALE: 1:1

BRANSON Industrial Automation

ACTUATOR W/O PACKAGE 2000c Micro DIA40

510-294-261

REV 02