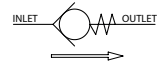




# ACCESSORY VALVES

check valve  
1/4 - 1/2



Series  
**800**

## GENERAL

**Operating pressure** 0 to 16 bar [1 bar =100 kPa]  
**Ambient temperature range** -20°C to +105°C  
**Min. working pressure** 0,07 bar

fluids (*)	temperature range (TS)	seal materials (*)
clean dry air or dry inert gas	-20°C to +105°C	NBR (nitrile)

## MATERIALS IN CONTACT WITH FLUID

(\*) Ensure that the compatibility of the fluids in contact with the materials is verified

**Body** AISI 316L  
**Seals** NBR

## SPECIFICATIONS

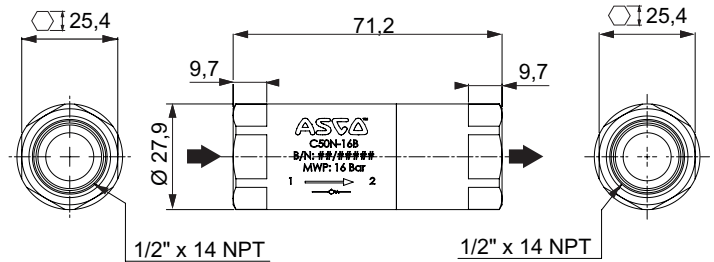
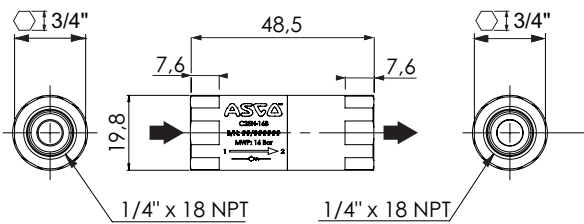
pipe size	flow coefficient Kv		catalogue number
	(m <sup>3</sup> /h)	(l/min)	
NPT			
1/4	0,95	15,88	<b>8800A90000N0000</b>
1/2	4,57	76,20	<b>8800A90200N0000</b>



## DIMENSIONS (mm), WEIGHT

**8800A90000N0000**

**8800A90200N0000**



catalogue number	Ø A	weight
<b>8800A90000N0000</b>	1/4 NPT	0,08
<b>8800A90200N0000</b>	1/2 NPT	0,20

