



Enhancements and New Functionality That Deliver Seamless Data & I/O Connectivity & Unparalleled Operator Experiences

DeltaV™ Version 15 Feature Pack 2 builds upon the commitment set with the release of DeltaV Version 15 and Feature Pack 1 to empower customers with a future-proof automation system. At the forefront of this release are innovations that empower businesses with seamless data and I/O connectivity, simplifying integration and fueling more informed decision-making. Coupled with enhancements to insight-centric applications and an industry-leading operator experience, DeltaV v15.FP2 continues to shape what is also an industry-leading modern control system.

Seamless Data & I/O Connectivity

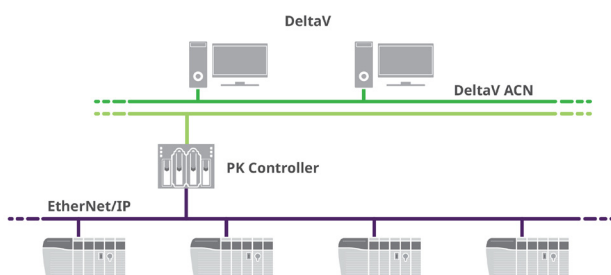
IO.Connect for Rockwell

DeltaV IO.Connect capabilities expand to help plants extend their DeltaV system to easily, seamlessly, and cost-effectively bring in their Rockwell/Allen-Bradley PLC I/O directly to DeltaV. With this extension to the DeltaV PK controller's EtherNet/IP capabilities, customers can now control their process via Rockwell 1756 (ControlLogix), 1734 (Point), or 1794 (Flex) I/O modules directly from DeltaV.

DeltaV customers can leave their I/O in place, modernize at their own pace, and operate, optimize, and expand their facility as a single plant—with a single database and control approach.

Additional features and benefits include:

- Seamless integration and interaction with Rockwell I/O
- Standard DeltaV licensing
- No gateways required
- Automated I/O mapping in DeltaV via the DeltaV Revamp application
- Direct configuration of E300s and other devices via EtherNet/IP



PROFINET Diagnostic Improvements

A PROFINET Error Code Manager has been created as a standalone application. PROFINET diagnostic errors are now captured in Process History View, eliminating extra steps to capture errors. It can be accessed through DeltaV Diagnostics or directly as any other application and comes prepopulated with the most common error codes. The database can be easily customized by editing current information, add new entries, or remove an existing error code.

Modbus Extended Range

Supports the full Modbus range of addresses from 0-65536 for simpler configuration.

EIOC OPC UA Client

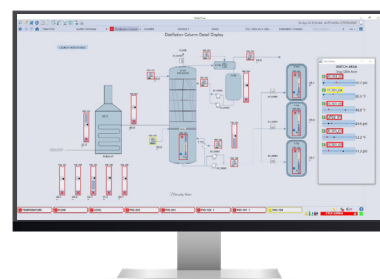
The Ethernet I/O card's OPC UA Client can write strings for Vendor Provided Equipment for easier management. This could include cases where there is a need for the system to communicate and transfer a batch ID number and/or recipe name.

Insight-Centric Applications & Operator Experience

DeltaV Live

Watch Area Enhancements

Contents of a watch area will persist within a session of DeltaV Live, allowing operators to maintain situational awareness and improve efficiency by preserving the content of watch areas after closing.



Intrinsically Safe I/O

PK Controller Supports Intrinsically Safe I/O

The DeltaV PK Controller now supports the use of all M-Series Intrinsically Safe I/O Cards and openly integrates with all automation infrastructure, streamlining the path to modernization.

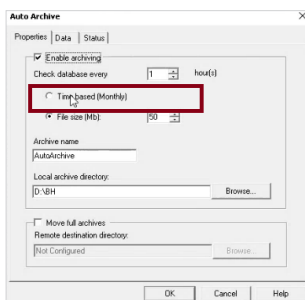
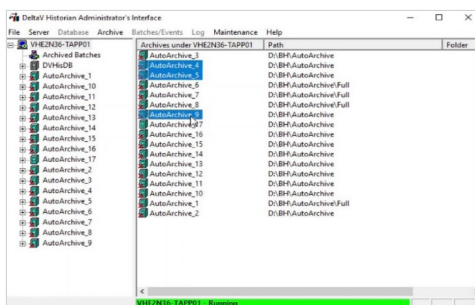


Batch & Continuous Control Enhancements

Useability & Performance Enhancements

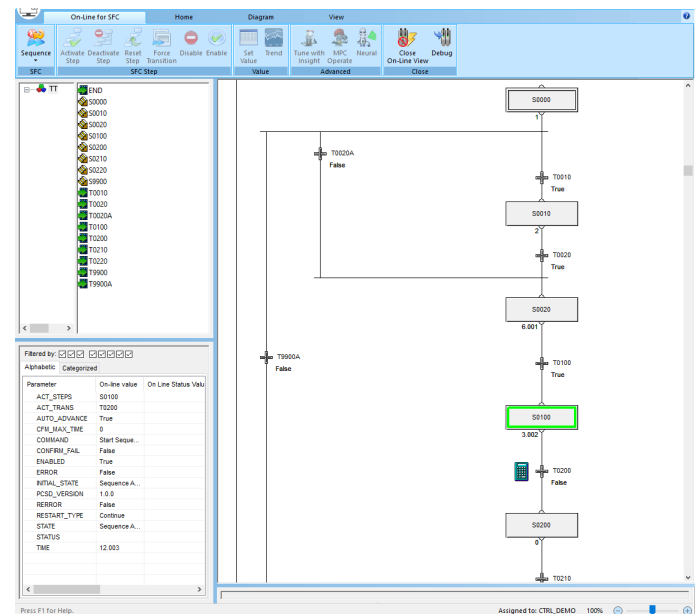
Batch capability enhancements improve usability and performance of the DeltaV built-for-batch applications:

- **Scheduled Operations:** added time-based auto-archival function and modified default settings (Auto-backup to 30 days from 1 and Auto-delete upper limit to 365 days (from 180))
- **Improved Batch Redundancy diagnostic indication** for communication and synchronization
- **Maintenance Task Improvements:** Added logging functionality to help diagnose root causes and allowed archived database to be renamed
- **Batch Historian Administration performance improvements:** Multi-select capability enables users to process multiple archives in one action and an improved refresh behavior improves refresh and loading time



Sequential Function Chart (SFC) Operation

New functionality enables teams to make configuration changes to the SFC without interruption to the running logic. This download behavior maintains the system's operational state when configuration changes are made.



To learn more, visit emerson.com/deltav-v15FP2