

Emerson Wireless 1410S Gateway



The Next Generation of Wireless Infrastructure

The Emerson Wireless 1410S Gateway is the newest, most versatile wireless networking solution from the leader in wireless infrastructure*. Increased network capacity allows users to strengthen or add to *WirelessHART*® networks seamlessly while connecting with host systems and data applications. Customizable networks and flexible installation allow users to create a wireless field network to fit the needs of even the most challenging applications and site requirements.

- Network capacity up to 200 *WirelessHART* devices
- Additional sensor data can be leveraged from critical assets to eliminate blind spots, helping improve productivity and safety of operations
- Increased 781S Smart Antenna installation possibilities with integrated intrinsically safe outputs to Class 1/Div 1 or Zone 0/1 locations
- The 1410S Gateway combined with the Cisco Catalyst® IW6300 Heavy Duty Series Access Point delivers the next evolution of IIoT connectivity in a single solution.

Advanced Network Analytics

The Plantweb™ Insight Network Management application is designed for continuous, centralized monitoring of wireless networks across industrial facilities. Helping ensure operations adherence to network best practices for improved performance, this application offers strategic analysis that enables teams to prioritize maintenance and make informed decisions fast.

- Adhere to network best practices for improved reliability
- Troubleshoot faster by easily recognizing problem areas
- Utilize the network diagram to visualize networks and identify areas for improvements
- Centralized view of wireless networks across your facilities

For more information, contact your Sales Representative.



The 1410S Gateway and 781S Smart Antenna bring industrial facilities enhanced scalability and flexibility for creating wireless infrastructure.



EMERSON™

* CONTROL Reader's Choice Awards - Wireless Infrastructure

Emerson Wireless 1410S Gateway

Key Product Specifications

Wireless Communication Protocols	WirelessHART, ISA100
Network Capacity	Up to 200 <i>WirelessHART</i> devices (or) 200 <i>WirelessHART</i> and 99 ISA100 devices
Power	10.5 to 30 VDC input voltage (standard) 24 VDC Input Voltage (with IS output option) IEEE 802.11 PoE PoE via Cisco IW6300 Access Point when IW6300 is powered by DC or AC power
Ethernet Communication – Data Protocols	Modbus RTU/TCP, OPC, EtherNet/IP AMS Ready*, DeltaV Ready*, Ovation Ready* <i>WirelessHART</i> only*
Ethernet Ports	2 ports
Emerson Wireless 781S Smart Antenna Wiring Distance	Up to 400 m / 1312 ft
Mounting Options	Pole Mount Direct Mount to the Cisco IW6300
Dimensions	8.8 inches (width) x 6.25 in (length) x 2.5 in (height) Attached to Cisco IW6300: 9.5 in (width) x 11 in (length) x 5.03 in (height)
Operating Temperature	- 40 to 65° C
Hazardous Approvals	USA, Canada, ATEX, IECEx, *China, *Japan, *INMETRO *in process

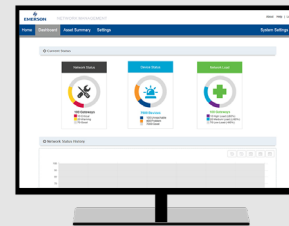
*See product data sheet for full specifications.

Related Products

Emerson and Cisco Wireless Access Point



Plantweb Insight Network Management Application



Global Headquarters

Emerson Automation Solutions
6021 Innovation Blvd.
Shakopee MN 55379
USA

+1 800 999 9307 or +1 952 906 8888

+1 952 949 7001

RFQ.RMD-RCC@Emerson.com

Standard Terms and Conditions of Sale can be found at www.Emerson.com/en-us/pages/Terms-of-Use.aspx
The Emerson logo is a trademark and service mark of Emerson Electric Co.
Rosemount and Rosemount logotype are trademarks of Emerson Electric Co. All other marks are the property of their respective owners.
©2020 Emerson. All rights reserved.

00807-0100-4410 RevAA

Consider it Solved.

Emerson Automation Solutions supports you with innovative technologies and expertise to address your toughest challenges. For more information, visit Emerson.com/Wireless

