

Critical Fisher™ Valve Parts & Repair

What's your challenge?

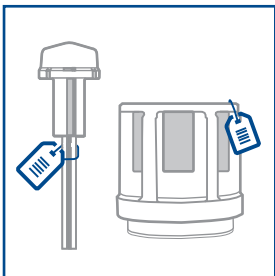
Critical valves are often exposed to harsher application and environmental conditions than general service valves. High vibrations, high pressure, erosion, corrosion, and cavitation are all common causes of accelerated wear in these severe service applications. Valve wear increases risk of issues such as: missing set point, valve packing leaks, or even complete valve failure. When these issues do occur, you need the right expertise and the right parts at the right time.

What's your opportunity?

Ensure operational efficiency of your critical Fisher valves with original equipment manufacturer (OEM) parts planning support and repair from Emerson. We'll help you procure parts that are designed to specification of the valve and application. Plus, our technicians complete product and repair training backed by OEM engineering expertise to help provide the right actions when needed. Emerson's Operational Certainty programmatic approach as well as differentiated products, solutions, and services all contribute towards your achievement of Top Quartile performance.



OEM Parts



Critical valves are engineered to meet very specific application requirements and require extreme dimensional accuracy and material properties. When tolerances are measured in thousandths of an inch, the actual dimension makes a difference. While replicator parts may initially seem to cost less, you will pay more in the long run because they typically do not last as long as genuine parts. Replicator parts need to be replaced more often, resulting in higher costs for and likely unplanned downtime, impacting safety and profitability. Only Fisher OEM parts are designed to the same exact standards as used in Fisher valve manufacturing plants around the world. And only with genuine OEM parts can you be sure of compliance with international codes, standards, and approvals.

Emerson has over 50,000 parts in inventory for same day/next day shipments to anywhere in the world through its growing network of distribution centers located in Brazil, Cincinnati, China, Dubai, Hungary, Mexico City, and Singapore. Utilizing our parts planning support, you can take advantage of that investment as part of your proactive maintenance schedule. We will work with you to evaluate the criticality of each valve, determine how quickly you need to be able to complete a repair, and decide the best stocking strategy for you.

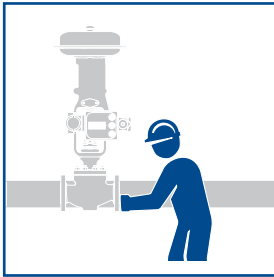
► Request a quote for OEM parts at [Emerson.com/FisherParts](https://www.emerson.com/FisherParts)

LIFECYCLE SERVICES

Valves, Actuators & Regulators



OEM Repair



OEM repair is necessary to keep your critical valves operating safely and as intended. We can help you stay on top of repairs by creating a proactive maintenance plan to help eliminate surprises and unplanned events. You selected Fisher control valves for the time-tested and innovative design that keeps your plant running smoothly. When it comes time for repair and maintenance, Emerson's service partners are the only providers who can help to ensure valves are returned to OEM standards. Our repairs help to keep your operations in compliance with operational and regulatory specifications and safety standards for peak productivity throughout your plant's lifecycle.



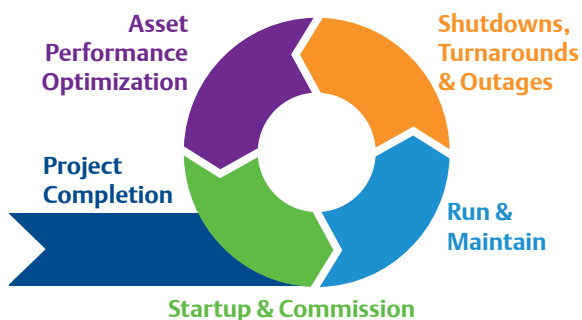
Harsh environments paired with poor maintenance procedures can lead to valve damage, like the plugged cage pictured above.

Our highly-skilled and OEM-certified technicians have vast industry and application-specific expertise. They can support your most critical valves with full on-site service capabilities sourced from regionally located service centers or mobile service centers. Our technicians use formally documented safety and quality processes with all local and regional certifications.

With over 200 regional service partners and 80+ mobile service centers worldwide, local experts are available to work with you to understand your unique challenges and help you find a solution. Our broad portfolio of service offerings allows us to tailor our support to align with your specific business goals.

► Learn more about our service capabilities at Emerson.com/LifecycleServices





Strategic Support Throughout the Lifecycle of Your Plant



Only Emerson has what it takes to provide you complete support throughout each stage of your plant lifecycle.

- Startup and commissioning support after a new build or an outage
- Day-to-day strategies as you run and maintain your process
- Shutdown, turnaround, or outage (STO) planning and execution
- Proven asset performance optimization tools and processes

Emerson Electric Co.
Global Headquarters
8000 West Florissant Avenue
St. Louis, Missouri, 63136
United States
T +1 888 889 9170
ContactUs@Emerson.com
Emerson.com/FinalControl

 [Emerson.com](https://www.emerson.com)
 [Facebook.com/EmersonAutomationSolutions](https://www.facebook.com/EmersonAutomationSolutions)
 [LinkedIn.com/company/Emerson-Automation-Solutions](https://www.linkedin.com/company/Emerson-Automation-Solutions)
 [Twitter.com/EMR_Automation](https://twitter.com/EMR_Automation)



For more details or to contact your local sales office, visit Emerson.com/LifecycleServices

© 2020 Emerson Electric Co. All rights reserved. Fisher and the Emerson logo are trademarks and service marks of Emerson Electric Co. All other marks are property of their respective owners. The contents of this publication are presented for information purposes only, and while effort has been made to ensure their accuracy, they are not to be construed as warranties or guarantees, express or implied, regarding the products or services described herein or their use or applicability. All sales are governed by our terms and conditions, which are available on request. We reserve the right to modify or improve the designs or specifications of our products at any time without notice. Responsibility for proper selection, use and maintenance of any product or service remains solely with the purchaser and end user. D35311X012, July 2020

