

# Proven Overfill Prevention Solutions in Process Vessels

Historical data shows that an **overflow** occurs in one out of 3300 filling operations. Invest in **proven** overflow prevention solutions and **trust** that your plant is protected.



## Superior Reliability

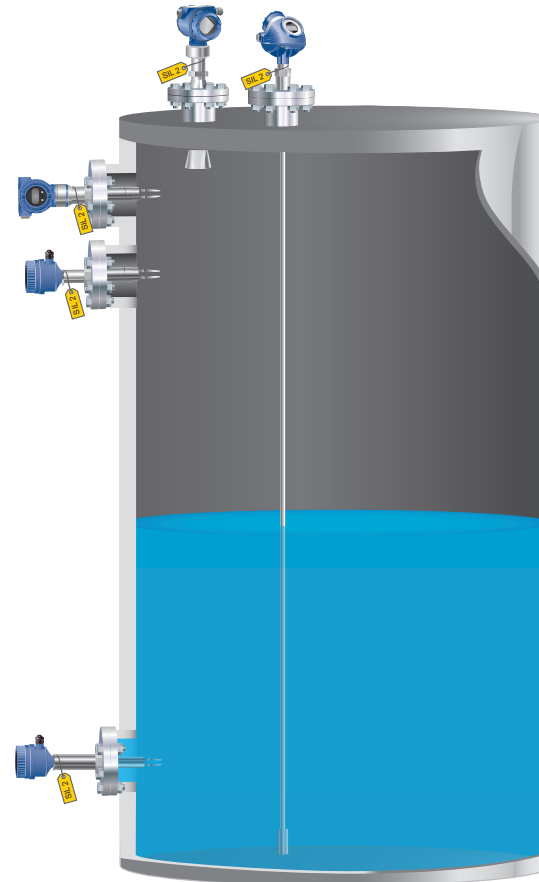
Emerson™ overfill prevention instrumentation is third party assessed and certified to IEC 61508.

Devices are designed to the highest standards with robust hardware, powerful integrated diagnostics and continuous self-checking of device health. Probability of a dangerous undetected failure that could risk an overflow event is greatly minimized.

## Complexity Reduction

Rosemount™ overfill prevention products are easy to install into existing or new SIS loops. They are stand alone devices that minimize space required in the control panel.

With human centered design in focus, the devices are easy to configure, operate and test via local operator interfaces, dedicated test ports, or even remotely from the host.



## Data Historian

Understanding what is happening in your tank is vital to prevent an overflow. Go back in time with the data historian and investigate what happened in your process up to seven days previously.

Events in your process can be interrogated and the device will present actionable alerts and data.

## Remote Proof-Testing

There is now another option to help you stay on top of your PFD<sub>avg</sub> with fully integrated remote partial proof-tests.

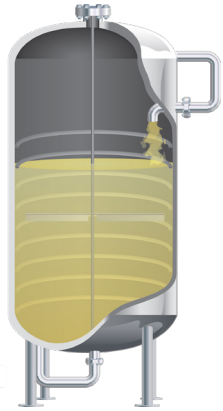
Test the integrity of your devices from the comfort and safety of your control room, without any need to wire in additional equipment, and spend less time in hazardous areas.

*“If **multiple layers of protection**, such as an independent high level alarm or automatic overflow prevention system had been present, this massive release [Puerto Rico, 2009] most likely **would have been prevented.**”*

Vidisha Parasram,  
US Chemical Safety and Hazard  
Investigation Board (CSB)



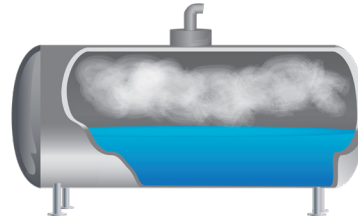
## Typical applications



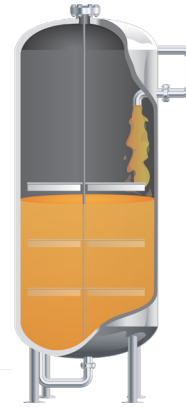
Reactor



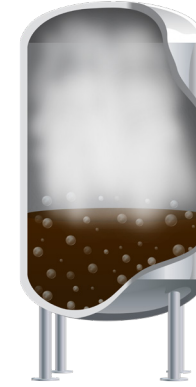
Distillation column



Storage tank








Blender



Boiler

There are many different applications that fall under the process vessel category in various industries. Choosing the right overflow prevention solution is not easy.

Emerson offers a comprehensive overflow prevention range for all tank types. These proven solutions help ensure your safety Instrumented system provides the right level of protection for your plant.

Features	Rosemount 2120	Rosemount 2130	Rosemount 2140:SIS	Rosemount 5300	Rosemount 5408: SIS
					
	Point level detection	Point level detection	Point level detection	Continuous level measurement	Continuous level measurement
<b>SIL Rating</b>	SIL 2 certified	SIL 2 certified	SIL 2 certified	SIL 2 certified	SIL 2 certified
<b>SFF</b>	91.1%	95.2%	96.7%	91.5%	92.7%
<b>λDU (FIT)</b>	24	17.5	13	94	79
<b>Proof-test</b>	Local, in-situ	Local, in-situ	Local and remote, in-situ	Remote, in-situ	Remote, in-situ
<b>P/T Ratings</b>	-40 to 302 °F (-40 to 150 °C) 1450 psi (100 bar)	-94 to 500 °F (-70 to 260 °C) 1450 psi (100 bar)	-94 to 500 °F (-70 to 260 °C) 1450 psi (100 bar)	-320 to 752 °F (-196 to 400 °C) 5000 psi (Full vacuum) (345 bar)	-76 to 482 °F (-60 to 250 °C) 1450 psi (100 bar)
<b>Description</b>	Simple, cost effective and flexible overflow prevention suitable for most liquid types.	Flexibility of Rosemount 2120, suitable for more challenging conditions.	Next generation point level overflow prevention with smart diagnostics and remote functionality.	Market leading guided wave radar with superior reliability and safety features, and powerful built-in diagnostics.	Local memory enables full insight into the last seven days of measurements. Immune to intermittent power loss.

**Trust is the basis for everything.** Learn more: [Emerson.com/OverfillPrevention](https://www.emerson.com/OverfillPrevention)

**Emerson Automation Solutions**  
8200 Market Boulevard  
Chanhassen, MN 55317 USA  
T (U.S.) 1-800-999-9307  
T (International) (952) 906 8888  
F (952) 906 8889

 [Emerson.com](https://www.emerson.com)  
 [Facebook.com/Rosemount](https://www.facebook.com/Rosemount)  
 [LinkedIn.com/company/Emerson-Automation-Solutions](https://www.linkedin.com/company/Emerson-Automation-Solutions)  
 [Twitter.com/Rosemount\\_News](https://twitter.com/Rosemount_News)

Standard Terms and Conditions of Sale can be found at: [www.Emerson.com/en-us/Terms-of-Use](https://www.emerson.com/en-us/Terms-of-Use)  
The Emerson logo is a trademark and service mark of Emerson.  
Rosemount and the Rosemount logotype are trademarks of Emerson.  
© 2017 Emerson. All rights reserved.

00807-0200-4530 Rev. AA 11/17



**EMERSON**