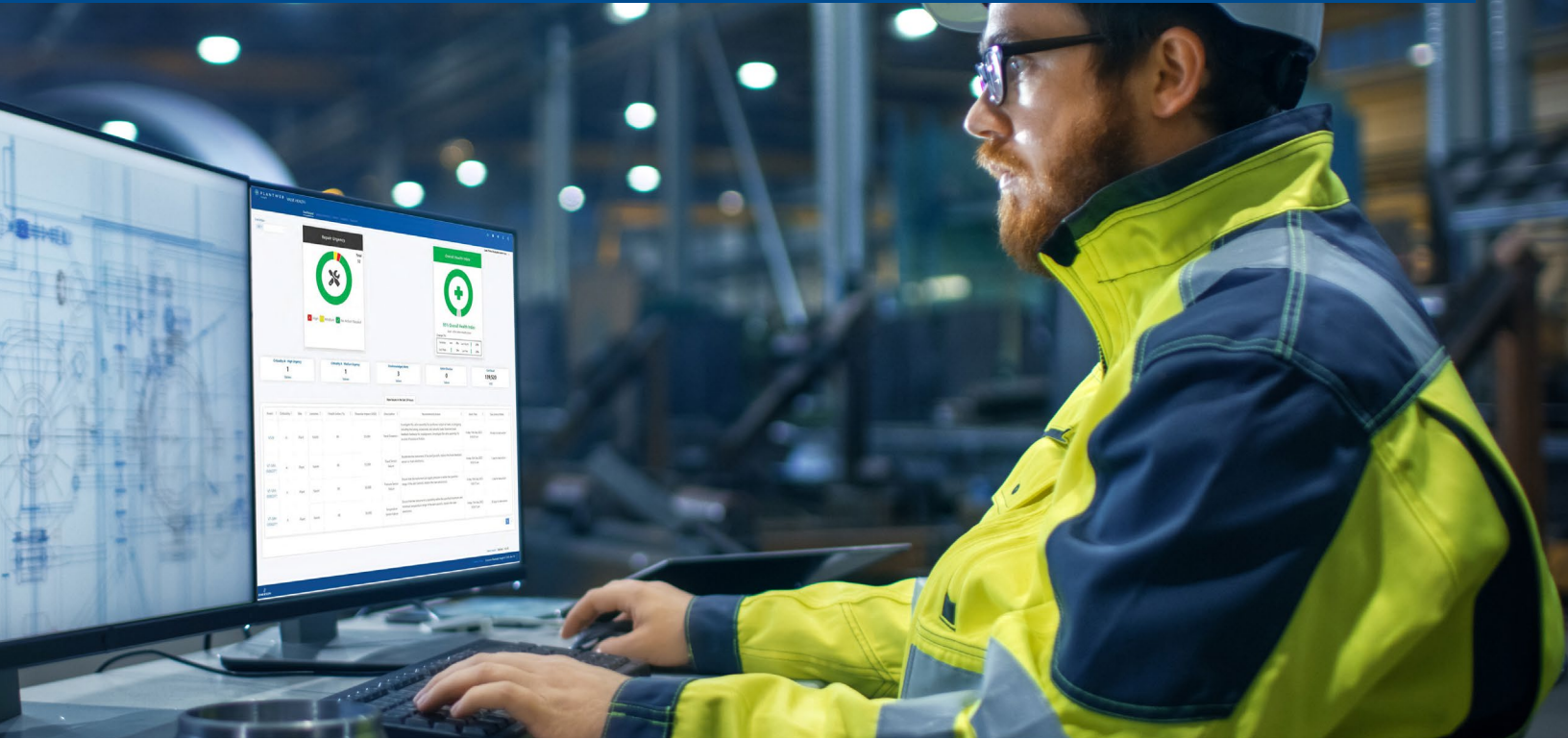


Understand the Health of Your Valve Fleet at a Glance with the Plantweb Insight™ Valve Health Application



View actionable repair recommendations with suggested timeframes to take action.

Data only becomes valuable when analyzed and acted upon.

Many of today's valve health applications collect a huge stream of data from the device and then transmit them to an asset management software. However, one challenge is the constant need for a valve expert to review and act upon the information collected. Only a few plants have the personnel with the expertise to do this task.

Without real-time and accurate data analysis, potential hazards or failures that are not identified and acted upon quickly can put the safety, reliability, and compliance of your facility at risk.

Make the most of your valve data with Plantweb Insight Valve Health application.

Emerson's Plantweb Insight™ Valve Health application is read-only, on-site software that generates health index indicators based on the degradation level of valves. The health index is displayed on a dashboard to easily view the health of the full fleet of valves.

With the Valve Health app, you see actionable recommendations for your valves to reduce risk, save time and costs, and improve overall efficiency and safety of your facility without being a valve diagnostic expert.

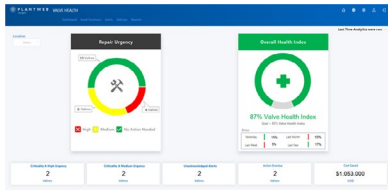


Plantweb Insight Valve Health application



Understand the Health of Your Fleet of Valves at a Glance with Plantweb Insight Valve Health Application

With the Plantweb Insight Valve Health application, you can maximize safety by reducing walk-arounds; optimize performance and reliability by identifying valve issues; and simplify maintenance planning using intuitive dashboards, recommended actions, and recommended timeframes in which to take action.



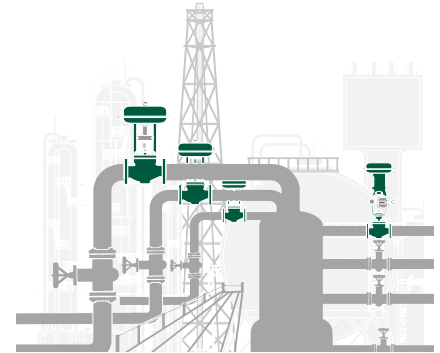
User Friendly

The intuitive dashboard view enables non-specialists to understand their valve fleet health and prioritize maintenance actions using color-coding and the included what-to, how-to, and when-to actionable information. ▶ [See quick start guide](#)



Efficient Valve Monitoring

Continuous fleetwide monitoring enables you to easily keep track of the overall health of your plant's valves while increasing plant safety by decreasing walk around time. Emerging and urgent issues are always available for viewing on demand. ▶ [View product bulletin](#)



Improved Maintenance Planning

Shift your strategy away from reactive maintenance by spotting abnormal situations before they become big problems. You'll see which valves need attention, and which valves don't, to help develop a prioritized list of maintenance actions. ▶ [Contact us](#)





Additional Product Benefits

- **Easy Integration:** Seamlessly integrate your existing infrastructure and expand the capabilities of your current system. Plantweb Insight applications can be used for any size operation.
- **Safely Access Data Anywhere:** With appropriate permissions, securely access your data from anywhere at any time. With its human-centered design interface, you get consistent and intuitive navigation across the applications.
- **Reduce Costs:** The Valve Health app's time-based analytics enable you to identify valve health issues, thereby helping you create proactive maintenance plans and reduce your expedited repair costs due to unexpected valve failure.

Learn More

- View product details at Emerson.com/ValveHealthApp
- See a list of Plantweb Insight applications at Emerson.com/Plantweb-Insight
- Find an Emerson sales office near you for more information Emerson.com/ContactUs

Emerson
Marshalltown, Iowa, 50158 USA
Sorocaba, 18087 Brazil
Cernay, 68700 France
Dubai, United Arab Emirates
Singapore 128461 Singapore

 Fisher.com
 Facebook.com/FisherValves
 LinkedIn.com/groups/3941826
 Twitter.com/FisherValves

© 2024 Fisher Controls International LLC. All rights reserved. Plantweb Insight is a mark owned by one of the companies in the Emerson business unit of Emerson Electric Co. Emerson and the Emerson logo are trademarks and service marks of Emerson Electric Co. All other marks are the property of their respective owners. The contents of this publication are presented for informational purposes only, and while every effort has been made to ensure their accuracy, they are not to be construed as warranties or guarantees, express or implied, regarding the products or services described herein or their use or applicability. All sales are governed by our terms and conditions, which are available upon request. We reserve the right to modify or improve the designs or specifications of such products at any time without notice. Neither Emerson, nor any of its affiliated entities assume responsibility for the selection, use, or maintenance of any product. Responsibility for proper selection, use, and maintenance of any product remains solely with the purchaser and end user.
D353457X012 / Jun24

