

Gateshaft Types: How Can I Tell the Difference?

Distinguishing Gateshaft Types

There are a number of characteristics that need to be determined to select the correct parts:

- Type of ballhead (40001, motor drive, belt drive)
- Left or right-handed
- Direct or reverse
- 1 piece speeder rod / 2 piece speeder rod
- Dashpot Style – old or new

Type of Ballhead (40001, Motor Drive, Belt Drive)



40001



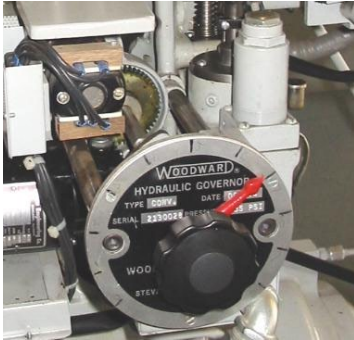
Motor drive



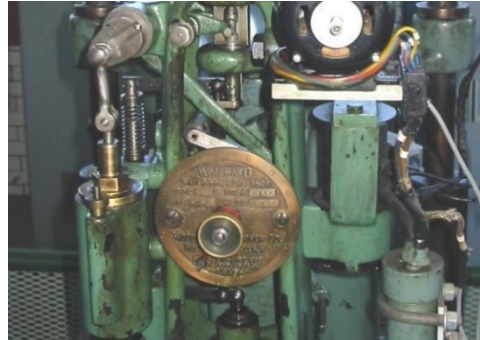
Belt drive

Left or Right-Handed

Facing the front of the governor (Gate Limit knob in front of you), put one hand on the dashpot and one hand on the gate limit without crossing your arms. The hand on the gate limit knob is the type of governor that you have.



Left-handed



Right-handed

Direct or Reverse:

With the pilot valve plunger as the center line:

- If the floating lever connecting rod is on the dashpot side of the governor, the governor is REVERSE.
- If the floating lever connecting rod is on the side away from the Dashpot, the governor is DIRECT.



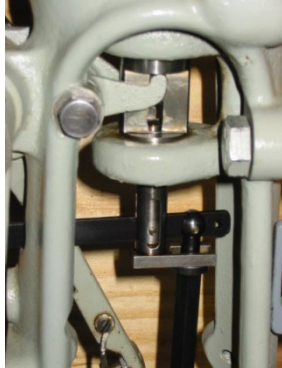
Reverse



Direct

1 Piece Speeder Rod / 2 Piece Speeder Rod

This can be determined by examining the gate limiting interface. The presence of a L-shaped limit sleeve indicates a 1-piece speeder rod.



1 Piece (has limit sleeve)



2 Piece (no limit sleeve)

Dashpot Style – Old or New

A quick visual inspection can reveal the type of dashpot. The newer dashpots have bushings that need to be changed along with a pair of link bearings. The old-style dashpot has a sight glass that may need the washers changed.



New style dashpot



Old style dashpot

Recommended Replacement Parts

- Emerson offers a complete line of new replacement parts – as well as many reconditioned parts and assemblies – for the rugged Woodward gateshaft governor
- Parts are often in stock or available with only a short lead time, which helps avoid unnecessary upgrades
- A properly tuned and maintained Woodward Gateshaft governor provides excellent frequency regulation.

For the appropriate replacements part for your Gateshaft governor, please refer to the below table:

Gateshaft Style

40001 Style Ballhead, New Style Dashpot	page 5
40001 Style Ballhead, Old Style Dashpot	page 6
GS Actuator / 40001 Style Ballhead	page 7
Horizontal Motor Drive, 1 Piece Speeder Rod, New Dashpot	page 8
Horizontal Motor Drive, 1 Piece Speeder Rod, Old Dashpot	page 9
Horizontal Motor Drive, 2 Piece Speeder Rod, New Dashpot	page 10
Horizontal Motor Drive, 2 Piece Speeder Rod, Old Dashpot	page 11
Belt Drive / 1 Piece Speeder Rod / New Style Dashpot	page 12
Belt Drive / 1 Piece Speeder Rod / Old Style Dashpot	page 13
Belt Drive / 2 Piece Speeder Rod / New Style Dashpot	page 14
Belt Drive / 2 Piece Speeder Rod / Old Style Dashpot	page 15
Weighted Head, 1 Piece Speeder Rod, New Dashpot	page 16
Weighted Head, 1 Piece Speeder Rod, Old Dashpot	page 17
Weighted Head, 2 Piece Speeder Rod, New Dashpot	page 18
Weighted Head, 2 Piece Speeder Rod, Old Dashpot	page 19

Technical Support and Field Service Available

Is your governor hunting? Are you having trouble synchronizing? Do the gates drift while on-line? Emerson can help; our deeply experienced, OEM-trained field service engineers are ready to answer any maintenance questions you may have and can be dispatched to your site on short notice for anything from routine troubleshooting, tuning, and calibration to a complete governor overhaul.

Gateshaft with 4001 Style Ballhead / New Style Dashpot

Recommended and Available Parts:

Manual 14000F	WGC Part Number	Quantity	Description
14000-40061	120732	2	Ballarm blocks
14000-31940	121267	1	Lower vibrator
14000-31840	121268	1	Upper vibrator
14000-22-K	130051	1	Pilot valve bushing
14000-50-K	141092	1	Speed adjustment clutch
14000-85-K	140289	1	Upper floating lever (Direct)
14000-86-K	141118	1	Lower floating lever (Direct)
14000-85-K	141117	1	Upper floating lever (Reverse)
14000-86-K	141119	1	Lower floating lever (Reverse)
14000-21-K	143172	1	Pilot valve plunger
14000-T38	180052	2	Dashpot link bearings
14000-ACT 68-3	180125	2	Spindle bearings
14000-14-1	183006	1	Small dashpot bushing
14000-14-2	183007	1	Large dashpot bushing
14000-22-7 (27-7)	184023	1	Small dashpot pin
14000-22-8	184024	1	Large dashpot pin
N/A	184090	8	Cotter pins
14000-40070	184358	2	Ballarm block pins
14000-90-K	188195	7	90K Pivot Pin
14000-48-22	189467	13	1/4" balls

Choose Gasket Kit Based on Size of Governor:

Manual 14000F Dash Number	WGC Part Number	Quantity	Description
Multiple	8935-006	1	1250-3000 Ft. Lbs.
Multiple	8935-007	1	6700-10,500 Ft. Lbs.
Multiple	8935-008	1	16,300-35,000 Ft. Lbs.
Multiple	8935-197	1	42,000-60,000 Ft. Lbs.
Multiple	8935-198	1	75,000 Ft. Lbs.

Gateshaft with Governor 4001 Style Ballhead / Old Style Dashpot

Recommended and Available Parts:

Manual 14000F	WGC Part Number	Quantity	Description
14000-40061	120732	2	Ballarm blocks
14000-31940	121267	1	Lower vibrator
14000-31840	121268	1	Upper vibrator
14000-22-K	130051	1	Pilot valve bushing
14000-50-K	141092	1	Speed adjustment clutch
14000-85-K	140289	1	Upper floating lever (Direct)
14000-86-K	141118	1	Lower floating lever (Direct)
14000-85-K	141117	1	Upper floating lever (Reverse)
14000-86-K	141119	1	Lower floating lever (Reverse)
14000-21-K	143172	1	Pilot valve plunger
14000-T38	180052	2	Dashpot link bearings
14000-ACT 68-2	180124	4	Ballarm bearings
14000-ACT 68-3	180125	2	Spindle bearings
14000-14-1	183006	1	Small dashpot bushing
14000-14-2	183007	1	Large dashpot bushing
14000-22-7 (27-7)	184023	1	Small dashpot pin
14000-22-8	184024	1	Large dashpot pin
N/A	184090	8	Cotter pins
14000-40070	184358	2	Ballarm block pins
14000-90-K	188195	7	90K Pivot Pin
14000-48-22	189467	13	1/4" balls

Choose Gasket Kit Based on Size of Governor:

Manual 14000F Dash Number	WGC Part Number	Quantity	Description
Multiple	8935-006	1	1250-3000 Ft. Lbs.
Multiple	8935-007	1	6700-10,500 Ft. Lbs.
Multiple	8935-008	1	16,300-35,000 Ft. Lbs.
Multiple	8935-197	1	42,000-60,000 Ft. Lbs.
Multiple	8935-198	1	75,000 Ft. Lbs.

GS Actuator / 40001 Style Ballhead

Recommended and Available Parts:

Manual 14043 Dash Number	WGC Part Number	Quantity	Description
14043-40061	120732	2	Ballarm blocks
14043-31940	121267	1	Lower vibrator
14043-31840	121268	1	Upper vibrator
14043-22K	130051	1	Pilot valve bushing
14043-50K	141092	1	Speed adjustment clutch
14043-85K	140289	1	Upper floating lever (Direct)
14043-86K	141118	1	Lower floating lever (Direct)
14043-85K	141117	1	Upper floating lever (Reverse)
14043-86K	141119	1	Lower floating lever (Reverse)
14043-21K	143172	1	Pilot valve plunger
14043-T38	180052	2	Dashpot link bearings
14043-ACT 68-2	180124	4	Ballarm bearings
14043-ACT 68-3	180125	2	Spindle bearings
14043-14-1	183006	1	Small dashpot bushing
14043-14-2	183007	1	Large dashpot bushing
14043-22-7 (27-7)	184023	1	Small dashpot pin
14043-22-8	184024	1	Large dashpot pin
N/A	184090	8	Cotter pins
14043-40070	184358	2	Ballarm block pins
14043-90K	188195	7	90K Pivot Pin
14043-48-22	189467	13	1/4" balls

Choose Gasket Kit Based on Size of Governor:

Manual 14043F Dash Number	WGC Part Number	Quantity	Description
Multiple	8935-006	1	1250-3000 Ft. Lbs.
Multiple	8935-007	1	6700-10,500 Ft. Lbs.
Multiple	8935-008	1	16,300-35,000 Ft. Lbs.
Multiple	8935-197	1	42,000-60,000 Ft. Lbs.
Multiple	8935-198	1	75,000 Ft. Lbs.

Gateshaft with Horizontal Motor Drive / 1 Piece Speeder Rod / New Style Dashpot

Recommended and Available Parts:

Manual 14000F Dash Number	WGC Part Number	Quantity	Description
14000-21-K	130046	1	Pilot valve plunger
14000-22-K	130051	1	Pilot valve bushing
14000-1506-K	140319	2	Ballarm Roller Pins
14000-1505-K	140622	2	Ballarm Rollers
14000-1508-K	140631	1	Lower vibrator
14000-1515-K	140641	1	Upper vibrator
14000-50-K	141092	1	Speed adjustment clutch
14000-188-KB	141222	1	Lower Washer
14000-188-KT	141223	1	Upper Washer
14000-85-K	140289	1	Upper floating lever (Direct)
14000-86-K	141118	1	Lower floating lever (Direct)
14000-85-K	141117	1	Upper floating lever (Reverse)
14000-86-K	141119	1	Lower floating lever (Reverse)
14000-T38	180052	2	Dashpot link bearings
14000-31693-2	180053	4	Ballarm bearings
14000-14-1	183006	1	Small dashpot bushing
14000-14-2	183007	1	Large dashpot bushing
14000-22-7 (27-7)	184023	1	Small dashpot pin
14000-22-8	184024	1	Large dashpot pin
N/A	184090	8	Cotter pins
14000-90-K	188195	7	90K Pivot Pin
14000-3/16 Ball	188372	16	3/16" Balls
14000-48-22	189467	10	1/4" balls

Choose Gasket Kit Based on Size of Governor:

Manual 14000F Dash Number	WGC Part Number	Quantity	Description
Multiple	8935-006	1	1250-3000 Ft. Lbs.
Multiple	8935-007	1	6700-10,500 Ft. Lbs.
Multiple	8935-008	1	16,300-35,000 Ft. Lbs.
Multiple	8935-197	1	42,000-60,000 Ft. Lbs.
Multiple	8935-198	1	75,000 Ft. Lbs.

Gateshaft with Horizontal Motor Drive / 1 Piece Speeder Rod / Old Style Dashpot

Recommended and Available Parts:

Manual 14000F Dash Number	WGC Part Number	Quantity	Description
14000-21-K	130046	1	Pilot valve plunger
14000-22-K	130051	1	Pilot valve bushing
14000-1506-K	140319	2	Ballarm Roller Pins
14000-1505-K	140622	2	Ballarm Rollers
14000-1508-K	140631	1	Lower vibrator
14000-1515-K	140641	1	Upper vibrator
14000-50-K	141092	1	Speed adjustment clutch
14000-78-K	141108	2	Dashpot Gauge Washer
14000-188-KB	141222	1	Lower Washer
14000-188-KT	141223	1	Upper Washer
14000-85-K	140289	1	Upper floating lever (Direct)
14000-86-K	141118	1	Lower floating lever (Direct)
14000-85-K	141117	1	Upper floating lever (Reverse)
14000-86-K	141119	1	Lower floating lever (Reverse)
14000-31693-2	180053	4	Ballarm bearings
14000-22-7 (27-7)	184023	1	Small dashpot pin
14000-N/A	184090	8	Cotter pins
14000-90-K	188195	8	90K Pivot Pin
14000-3/16 Ball	188372	16	3/16" Balls
14000-48-22	189467	10	1/4" balls

Choose Gasket Kit Based on Size of Governor:

Manual 14000F Dash Number	WGC Part Number	Quantity	Description
Multiple	8935-006	1	1250-3000 Ft. Lbs.
Multiple	8935-007	1	6700-10,500 Ft. Lbs.
Multiple	8935-008	1	16,300-35,000 Ft. Lbs.
Multiple	8935-197	1	42,000-60,000 Ft. Lbs.
Multiple	8935-198	1	75,000 Ft. Lbs.

Gateshaft with Horizontal Motor Drive / 2 Piece Speeder Rod / New Dashpot

Recommended and Available Parts:

Manual 14000F Dash Number	WGC Part Number	Quantity	Description
14000-22-K	130051	1	Pilot valve bushing
14000-1506-K	140319	2	Ballarm Roller Pins
14000-1505-K	140622	2	Ballarm Rollers
14000-190-K	141225	1	Lower vibrator
14000-191-K	140422	1	Upper vibrator
14000-50-K	141092	1	Speed adjustment clutch
14000-188-KB	141222	1	Lower Washer
14000-188-KT	141223	1	Upper Washer
14000-85-K	140289	1	Upper floating lever (Direct)
14000-86-K	141118	1	Lower floating lever (Direct)
14000-85-K	141117	1	Upper floating lever (Reverse)
14000-86-K	141119	1	Lower floating lever (Reverse)
14000-21-K	142096	1	Pilot valve plunger
14000-T38	180052	2	Dashpot link bearings
14000-31693-2	180053	4	Ballarm bearings
14000-14-1	183006	1	Small dashpot bushing
14000-14-2	183007	1	Large dashpot bushing
14000-22-7 (27-7)	184023	1	Small dashpot pin
14000-22-8	184024	1	Large dashpot pin
N/A	184090	8	Cotter pins
14000-90-K	188195	7	90K Pivot Pin
14000-3/16 Ball	188372	16	3/16" Balls
14000-48-22	189467	10	1/4" balls

Choose Gasket Kit Based on Size of Governor:

Manual 14000F Dash Number	WGC Part Number	Quantity	Description
Multiple	8935-006	1	1250-3000 Ft. Lbs.
Multiple	8935-007	1	6700-10,500 Ft. Lbs.
Multiple	8935-008	1	16,300-35,000 Ft. Lbs.
Multiple	8935-197	1	42,000-60,000 Ft. Lbs.
Multiple	8935-198	1	75,000 Ft. Lbs.

Gateshaft with Horizontal Motor Drive / 2 Piece Speeder Rod / Old Dashpot

Recommended and Available Parts:

Manual 14000F Dash Number	WGC Part Number	Quantity	Description
14000-22-K	130051	1	Pilot valve bushing
14000-1506-K	140319	2	Ballarm Roller Pins
14000-1505-K	140622	2	Ballarm Rollers
14000-190-K	141225	1	Lower vibrator
14000-191-K	140422	1	Upper vibrator
14000-50-K	141092	1	Speed adjustment clutch
14000-78-K	141108	2	Dashpot Gauge Washer
14000-188-KB	141222	1	Lower Washer
14000-188-KT	141223	1	Upper Washer
14000-85-K	140289	1	Upper floating lever (Direct)
14000-86-K	141118	1	Lower floating lever (Direct)
14000-85-K	141117	1	Upper floating lever (Reverse)
14000-86-K	141119	1	Lower floating lever (Reverse)
14000-21-K	142096	1	Pilot valve plunger
14000-31693-2	180053	4	Ballarm bearings
14000-22-7 (27-7)	184023	1	Small dashpot pin
N/A	184090	8	Cotter pins
14000-90-K	188195	8	90K Pivot Pin
14000-3/16 Ball	188372	16	3/16" Balls
14000-48-22	189467	10	1/4" balls

Choose Gasket Kit Based on Size of Governor:

Manual 14000F Dash Number	WGC Part Number	Quantity	Description
Multiple	8935-006	1	1250-3000 Ft. Lbs.
Multiple	8935-007	1	6700-10,500 Ft. Lbs.
Multiple	8935-008	1	16,300-35,000 Ft. Lbs.
Multiple	8935-197	1	42,000-60,000 Ft. Lbs.
Multiple	8935-198	1	75,000 Ft. Lbs.

Gateshaft with Belt Drive / 1 Piece Speeder Rod / New Style Dashpot

Recommended and Available Parts:

Manual 14000F Dash Number	WGC Part Number	Quantity	Description
14000-21-K	130046	1	Pilot valve plunger
14000-22-K	130051	1	Pilot valve bushing
14000-1506-K	140319	2	Ballarm Roller Pins
14000-1505-K	140622	2	Ballarm Rollers
14000-1508-K	140631	1	Lower vibrator
14000-1515-K	140641	1	Upper vibrator
14000-50-K	141092	1	Speed adjustment clutch
14000-188-KB	141222	1	Lower Washer
14000-188-KT	141223	1	Upper Washer
14000-85-K	140289	1	Upper floating lever (Direct)
14000-86-K	141118	1	Lower floating lever (Direct)
14000-85-K	141117	1	Upper floating lever (Reverse)
14000-86-K	141119	1	Lower floating lever (Reverse)
14000-T38	180052	2	Dashpot link bearings
14000-31693-2	180053	4	Ballarm bearings
14000-14-1	183006	1	Small dashpot bushing
14000-14-2	183007	1	Large dashpot bushing
14000-22-7 (27-7)	184023	1	Small dashpot pin
14000-22-8	184024	1	Large dashpot pin
N/A	184090	8	Cotter pins
14000-90-K	188195	7	90K Pivot Pin
14000-3/16 Ball	188372	16	3/16" Balls
14000-48-22	189467	10	1/4" balls

Choose Gasket Kit Based on Size of Governor:

Manual 14000F Dash Number	WGC Part Number	Quantity	Description
Multiple	8935-006	1	1250-3000 Ft. Lbs.
Multiple	8935-007	1	6700-10,500 Ft. Lbs.
Multiple	8935-008	1	16,300-35,000 Ft. Lbs.
Multiple	8935-197	1	42,000-60,000 Ft. Lbs.
Multiple	8935-198	1	75,000 Ft. Lbs.

Gateshaft with Belt Drive / 1 Piece Speeder Rod / Old Style Dashpot

Recommended and Available Parts:

Manual 14000F Dash Number	WGC Part Number	Quantity	Description
14000-21-K	130046	1	Pilot valve plunger
14000-22-K	130051	1	Pilot valve bushing
14000-1506-K	140319	2	Ballarm Roller Pins
14000-1505-K	140622	2	Ballarm Rollers
14000-1508-K	140631	1	Lower vibrator
14000-1515-K	140641	1	Upper vibrator
14000-50-K	141092	1	Speed adjustment clutch
14000-78-K	141108	2	Dashpot gauge washer
14000-188-KB	141222	1	Lower Washer
14000-188-KT	141223	1	Upper Washer
14000-85-K	140289	1	Upper floating lever (Direct)
14000-86-K	141118	1	Lower floating lever (Direct)
14000-85-K	141117	1	Upper floating lever (Reverse)
14000-86-K	141119	1	Lower floating lever (Reverse)
14000-31693-2	180053	4	Ballarm bearings
14000-22-7 (27-7)	184023	1	Small dashpot pin
N/A	184090	8	Cotter pins
14000-90-K	188195	7	90K Pivot Pin
14000-3/16 Ball	188372	16	3/16" Balls
14000-48-22	189467	10	1/4" balls

Choose Gasket Kit Based on Size of Governor:

Manual 14000F Dash Number	WGC Part Number	Quantity	Description
Multiple	8935-006	1	1250-3000 Ft. Lbs.
Multiple	8935-007	1	6700-10,500 Ft. Lbs.
Multiple	8935-008	1	16,300-35,000 Ft. Lbs.
Multiple	8935-197	1	42,000-60,000 Ft. Lbs.
Multiple	8935-198	1	75,000 Ft. Lbs.

Gateshaft with Belt Drive / 2 Piece Speeder Rod / New Style Dashpot

Recommended and Available Parts:

Manual 14000F Dash Number	WGC Part Number	Quantity	Description
14000-22-K	130051	1	Pilot valve bushing
14000-1506-K	140319	2	Ballarm Roller Pins
14000-1505-K	140622	2	Ballarm Rollers
14000-190-K	141225	1	Lower vibrator
14000-191-K	140422	1	Upper vibrator
14000-50-K	141092	1	Speed adjustment clutch
14000-188-KB	141222	1	Lower Washer
14000-188-KT	141223	1	Upper Washer
14000-85-K	140289	1	Upper floating lever (Direct)
14000-86-K	141118	1	Lower floating lever (Direct)
14000-85-K	141117	1	Upper floating lever (Reverse)
14000-86-K	141119	1	Lower floating lever (Reverse)
14000-21-K	142096	1	Pilot valve plunger
14000-T38	180052	2	Dashpot link bearings
14000-31693-2	180053	4	Ballarm bearings
14000-14-1	183006	1	Small dashpot bushing
14000-14-2	183007	1	Large dashpot bushing
14000-22-7 (27-7)	184023	1	Small dashpot pin
14000-22-8	184024	1	Large dashpot pin
N/A	184090	8	Cotter pins
14000-90-K	188195	7	90K Pivot Pin
14000-3/16 Ball	188372	16	3/16" Balls
14000-48-22	189467	10	1/4" balls

Choose Gasket Kit Based on Size of Governor:

Manual 14000F Dash Number	WGC Part Number	Quantity	Description
Multiple	8935-006	1	1250-3000 Ft. Lbs.
Multiple	8935-007	1	6700-10,500 Ft. Lbs.
Multiple	8935-008	1	16,300-35,000 Ft. Lbs.
Multiple	8935-197	1	42,000-60,000 Ft. Lbs.
Multiple	8935-198	1	75,000 Ft. Lbs.

Gateshaft with Belt Drive / 2 Piece Speeder Rod / Old Style Dashpot

Recommended and Available Parts:

Manual 14000F Dash Number	WGC Part Number	Quantity	Description
14000-22-K	130051	1	Pilot valve bushing
14000-1506-K	140319	2	Ballarm Roller Pins
14000-1505-K	140622	2	Ballarm Rollers
14000-190-K	141225	1	Lower vibrator
14000-191-K	140422	1	Upper vibrator
14000-50-K	141092	1	Speed adjustment clutch
14000-78-K	141108	2	Dashpot Gauge Washer
14000-188-KB	141222	1	Lower Washer
14000-188-KT	141223	1	Upper Washer
14000-85-K	140289	1	Upper floating lever (Direct)
14000-86-K	141118	1	Lower floating lever (Direct)
14000-85-K	141117	1	Upper floating lever (Reverse)
14000-86-K	141119	1	Lower floating lever (Reverse)
14000-21-K	142096	1	Pilot valve plunger
14000-31693-2	180053	4	Ballarm bearings
14000-22-7 (27-7)	184023	1	Small dashpot pin
N/A	184090	8	Cotter pins
14000-90-K	188195	8	90K Pivot Pin
14000-3/16 Ball	188372	16	3/16" Balls
14000-48-22	189467	10	1/4" balls

Choose Gasket Kit Based on Size of Governor:

Manual 14000F Dash Number	WGC Part Number	Quantity	Description
Multiple	8935-006	1	1250-3000 Ft. Lbs.
Multiple	8935-007	1	6700-10,500 Ft. Lbs.
Multiple	8935-008	1	16,300-35,000 Ft. Lbs.
Multiple	8935-197	1	42,000-60,000 Ft. Lbs.
Multiple	8935-198	1	75,000 Ft. Lbs.

Gateshaft with Weighted Head / 1 Piece Speeder Rod / New Style Dashpot

Recommended and Available Parts:

Manual 14000F Dash Number	WGC Part Number	Quantity	Description
14000-22-K	130051	1	Pilot valve bushing
14000-1506-K	140319	2	Ballarm Roller Pins
14000-1505-K	140622	2	Ballarm Rollers
14000-1508-K	141631	1	Lower vibrator-1 piece rod
14000-1515-K	141623	1	Upper vibrator-1 piece rod
14000-50-K	141092	1	Speed adjustment clutch
N/A	141802	1	Thrust Bearing
14000-85-K	140289	1	Upper floating lever (Direct)
14000-86-K	141118	1	Lower floating lever (Direct)
14000-85-K	141117	1	Upper floating lever (Reverse)
14000-86-K	141119	1	Lower floating lever (Reverse)
14000-21-K	143172	1	Pilot valve plunger
14000-T38	180052	2	Dashpot link bearings
14000-31693-2	180053	4	Ballarm bearings
14000-14-1	183006	1	Small dashpot bushing
14000-14-2	183007	1	Large dashpot bushing
14000-22-7 (27-7)	184023	1	Small dashpot pin
14000-22-8	184024	1	Large dashpot pin
N/A	184090	8	Cotter pins
14000-90-K	188195	7	90K Pivot Pin
14000-48-22	189467	10	1/4" balls

Choose Gasket Kit Based on Size of Governor:

Manual 14000F Dash Number	WGC Part Number	Quantity	Description
Multiple	8935-006	1	1250-3000 Ft. Lbs.
Multiple	8935-007	1	6700-10,500 Ft. Lbs.
Multiple	8935-008	1	16,300-35,000 Ft. Lbs.
Multiple	8935-197	1	42,000-60,000 Ft. Lbs.
Multiple	8935-198	1	75,000 Ft. Lbs.

Gateshaft with Weighted Head / 1 Piece Speeder Rod / Old Style Dashpot

Recommended and Available Parts:

Manual 14000F Dash Number	WGC Part Number	Quantity	Description
14000-22-K	130051	1	Pilot valve bushing
14000-1506-K	140319	2	Ballarm Roller Pins
14000-1505-K	140622	2	Ballarm Rollers
14000-1508-K	141631	1	Lower vibrator-1 piece rod
14000-1515-K	141623	1	Upper vibrator-1 piece rod
14000-50-K	141092	1	Speed adjustment clutch
14000-78-K	141108	2	Dashpot gauge washer
N/A	141802	1	Thrust Bearing
14000-85-K	140289	1	Upper floating lever (Direct)
14000-86-K	141118	1	Lower floating lever (Direct)
14000-85-K	141117	1	Upper floating lever (Reverse)
14000-86-K	141119	1	Lower floating lever (Reverse)
14000-21-K	143172	1	Pilot valve plunger
14000-31693-2	180053	4	Ballarm bearings
14000-22-7 (27-7)	184023	1	Small dashpot pin
N/A	184090	8	Cotter pins
14000-90-K	188195	8	90K Pivot Pin
14000-48-22	189467	10	1/4" balls

Choose Gasket Kit Based on Size of Governor:

Manual 14000F Dash Number	WGC Part Number	Quantity	Description
Multiple	8935-006	1	1250-3000 Ft. Lbs.
Multiple	8935-007	1	6700-10,500 Ft. Lbs.
Multiple	8935-008	1	16,300-35,000 Ft. Lbs.
Multiple	8935-197	1	42,000-60,000 Ft. Lbs.
Multiple	8935-198	1	75,000 Ft. Lbs.

Gateshaft with Weighted Head / 2 Piece Speeder Rod / New Style Dashpot

Recommended and Available Parts:

Manual 14000F Dash Number	WGC Part Number	Quantity	Description
14000-22-K	130051	1	Pilot valve bushing
14000-1506-K	140319	2	Ballarm Roller Pins
14000-1505-K	140622	2	Ballarm Rollers
14000-1508-K	141226	1	Lower vibrator-2 piece rod
14000-1515-K	141228	1	Upper vibrator-2 piece rod
14000-50-K	141092	1	Speed adjustment clutch
N/A	141802	1	Thrust Bearing
14000-85-K	140289	1	Upper floating lever (Direct)
14000-86-K	141118	1	Lower floating lever (Direct)
14000-85-K	141117	1	Upper floating lever (Reverse)
14000-86-K	141119	1	Lower floating lever (Reverse)
14000-21-K	142096	1	Pilot valve plunger
14000-T38	180052	2	Dashpot link bearings
14000-31693-2	180053	4	Ballarm bearings
14000-14-1	183006	1	Small dashpot bushing
14000-14-2	183007	1	Large dashpot bushing
14000-22-7 (27-7)	184023	1	Small dashpot pin
14000-22-8	184024	1	Large dashpot pin
N/A	184090	8	Cotter pins
14000-90-K	188195	7	90K Pivot Pin
14000-48-22	189467	10	1/4" balls

Choose Gasket Kit Based on Size of Governor:

Manual 14000F Dash Number	WGC Part Number	Quantity	Description
Multiple	8935-006	1	1250-3000 Ft. Lbs.
Multiple	8935-007	1	6700-10,500 Ft. Lbs.
Multiple	8935-008	1	16,300-35,000 Ft. Lbs.
Multiple	8935-197	1	42,000-60,000 Ft. Lbs.
Multiple	8935-198	1	75,000 Ft. Lbs.

Gateshaft with Weighted Head / 2 Piece Speeder Rod / Old Style Dashpot

Recommended and Available Parts:

Manual 14000F Dash Number	WGC Part Number	Quantity	Description
14000-22-K	130051	1	Pilot valve bushing
14000-1506-K	140319	2	Ballarm Roller Pins
14000-1505-K	140622	2	Ballarm Rollers
14000-1508-K	141226	1	Lower vibrator- 2-piece rod
14000-1515-K	141228	1	Upper vibrator- 2-piece rod
14000-50-K	141092	1	Speed adjustment clutch
14000-78-K	141108	2	Dashpot Gauge Washer
N/A	141802	1	Thrust Bearing
14000-85-K	140289	1	Upper floating lever (Direct)
14000-86-K	141118	1	Lower floating lever (Direct)
14000-85-K	141117	1	Upper floating lever (Reverse)
14000-86-K	141119	1	Lower floating lever (Reverse)
14000-21-K	142096	1	Pilot valve plunger
14000-31693-2	180053	4	Ballarm bearings
14000-22-7 (27-7)	184023	1	Small dashpot pin
N/A	184090	8	Cotter pins
14000-90-K	188195	8	90K Pivot Pin
14000-48-22	189467	10	1/4" balls

Choose Gasket Kit Based on Size of Governor:

Manual 14000F Dash Number	WGC Part Number	Quantity	Description
Multiple	8935-006	1	1250-3000 Ft. Lbs.
Multiple	8935-007	1	6700-10,500 Ft. Lbs.
Multiple	8935-008	1	16,300-35,000 Ft. Lbs.
Multiple	8935-197	1	42,000-60,000 Ft. Lbs.
Multiple	8935-198	1	75,000 Ft. Lbs.

©2021 Emerson. All rights reserved. The Emerson logo is a trademark and service mark of Emerson Electric Co. Ovation™ is a mark of one of the Emerson Automation Solutions family of business units. All other marks are the property of their respective owners. The contents of this publication are presented for information purposes only, and while effort has been made to ensure their accuracy, they are not to be construed as warranties or guarantees, express or implied, regarding the products or services described herein or their use or applicability. All sales are governed by our terms and conditions, which are available on request. We reserve the right to modify or improve the designs or specifications of our products at any time without notice.