



ELECTRICAL EQUIPMENT FOR EXPLOSIVE ATMOSPHERES

 **Appleton**



1/ DUST HAZARDS (D): ZONES 20, 21 and 22

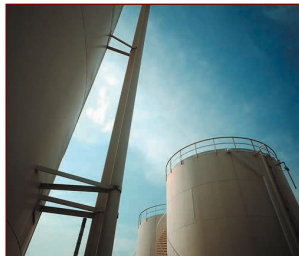
INDUSTRIES AFFECTED:



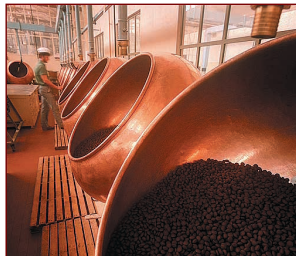
INDUSTRIES AFFECTED	TYPES OF DUST	APPLICATIONS
---------------------	---------------	--------------

1 – FOOD DUST

Silos, flour milling, baking, agri-foods, etc.



Cereals, starch, sugar, flour, milk, chocolate, colorings, etc.



Storage, transportation (mechanical, on road vehicles), milling, crushing, filling, etc.



2 – PLANT DUST

Wood, manufactures of furniture and corks.
Wood silos, waste sorting, textiles, etc.



Wood, bark, cork, cotton, paper, etc.



Storage, transportation, processing



3 – METAL DUST

Surface treatment, shot blasting, sandblasting, etc.



Aluminum, magnesium, ferro alloys, etc.

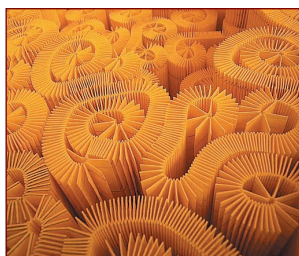


Processing



4 – DUST FROM INDUSTRIAL PROCESSING

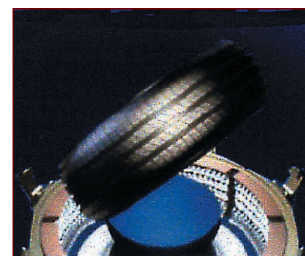
Processing of plastics, tires, paints, etc.



Plastics, powder coatings, fertilizers, rubber, elastomers, resins and synthetic adhesives, etc.



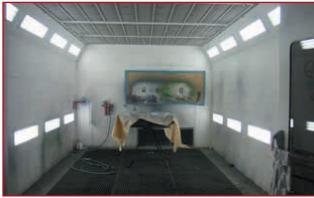
Storage, transportation, processing





INDUSTRIES AFFECTED	TYPE OF HAZARD / PRESENCE OF GAS	APPLICATIONS
---------------------	----------------------------------	--------------

Automotive, mechanical, boiler construction, plastic parts or parts with a plastic appearance



SOLVENT VAPORS (TYPE IIB)

Liquid paint, varnish, bonding, stripping, etc.



Paint booths, processing.



Processing of aerosol dispensers

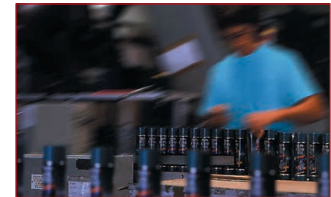


PROPELLANT GAS

Lubricants, perfumes, paint, surface treatment, etc.



Filling processes



Automotive outsourcing, earthenware, glass, high-power heating (ovens), etc.

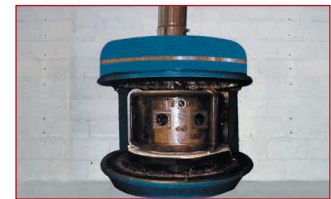


GAS EMISSIONS AND LEAKS

Heating processes, hydrogen furnaces



Oven proximity, control unit, processing, etc.



HANDLING AND STORAGE OF DANGEROUS PRODUCTS

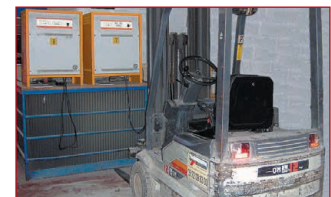
All-industry handling with forklift (warehouse storage)



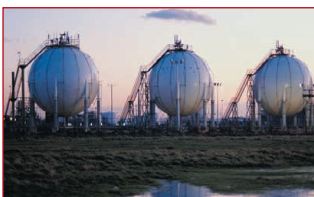
Butane, propane, etc.



Battery charging area for trucks, storage areas, etc.



Petrochemicals, oil exploration, production, refining and storage



FOSSIL FUELS

Oil, petrol, methane, etc.



Processing, storage, transportation, etc.



SELECT YOUR APPLETON ATX PRODUCTS FOR GAS AND DUST APPLICATIONS

LIGHTING



Gas area – G: zone 1 → $\text{CE} \text{Ex} \text{II} 2 \text{G}$
 zone 2 → $\text{CE} \text{Ex} \text{II} 3 \text{G}$

Dust area – D: zone 21 → $\text{CE} \text{Ex} \text{II} 2 \text{D}$
 zone 22 → $\text{CE} \text{Ex} \text{II} 3 \text{D}$

FE SERIES (ZONES 1 & 2 – 21 & 22) ①



FLUORESCENT LIGHTS EXPLOSIONPROOF CLASS Ex de	CATALOG NUMBERS (NON-ARMORED CABLE) 1 M25 CABLE GLAND SUPPLIED	CATALOG NUMBERS (ARMORED CABLE)
2 x 18W – 110/254 – 50/60 Hz	FEB218BUSN	FEB218BUSA
2 x 36W – 110/254 – 50/60 Hz	FEB236BUSN	FEB236BUSA
2 x 58W – 110/254 – 50/60 Hz	FEB258BUSN	FEB258BUSA

FN SERIES (ZONES 2 – 21 & 22) ①



FLUORESCENT LIGHTING EXPLOSIONPROOF CLASS Ex nR nA	CATALOG NUMBERS (NON-ARMORED CABLE) 1 M25 CABLE GLAND SUPPLIED	CATALOG NUMBERS (ARMORED CABLE)
2 x 18W – 220/240 – 50/60 Hz	FNB218BKSNN	FNB218BKSAN
2 x 36W – 220/240 – 50/60 Hz	FNB236BKSNN	FNB236BKSAN
2 x 58W – 220/240 – 50/60 Hz	FNB258BKSNN	FNB258BKSAN

FD SERIES (ZONES 1 & 2 – 21 & 22) ①



FLUORESCENT LIGHTING EXPLOSIONPROOF CLASS Ex d	CATALOG NUMBERS
2 x 18W – 230V – 50 Hz – 2 x M20	FDB218XCM
2 x 36W – 230V – 50 Hz – 2 x M20	FDB236XCM
2 x 58W – 230V – 50 Hz – 2 x M20	FDB258XCM

PB SERIES (ZONES 1 & 2 – 21 & 22)



FLOODLIGHTS EXPLOSIONPROOF CLASS Ex de IIB HIGH PRESSURE SODIUM	CATALOG NUMBERS
150 W – 230/240V – 50 Hz – 1 M20 Cable Gland Supplied	PBAL15XJB
250 W – 230/240V – 50 Hz – 1 M20 Cable Gland Supplied	PBAL25XJB
400 W – 230/240V – 50 Hz – 1 M20 Cable Gland Supplied	PBAL40XJB

PN SERIES (ZONES 2 – 21 & 22)



FLOODLIGHT EXPLOSIONPROOF CLASS Ex nR HIGH PRESSURE SODIUM 2 M20 CABLE ENTRIES	CATALOG NUMBERS (GLASS LENS)	CATALOG NUMBERS (POLYCARBONATE LENS)
150 W – 230/240V – 50 Hz	PNM1L15AGXJ	PNM1L15APXJ
250 W – 230/240V – 50 Hz	PNM1L25AGXJ	PNM1L25APXJ
400 W – 230/240V – 50 Hz	PNM1L40AGXJ	PNL1L40APXJ

FDBAES SERIES (ZONES 1 & 2 – 21 & 22)



Ex d LED EMERGENCY LIGHTING SYSTEM	CATALOG NUMBERS
Escape Route Lighting – Rated Flow 55 Lumens – 2 M20 Cable Entries	FDBAESLEDEM
Space Lighting – Rated Flow 540 Lumens – 2 M20 Cable Entries	FDBAESLEDSLM
Label – Emergency Exit	094906

① 3H Emergency version available on request



SELECT YOUR APPLETON ATX PRODUCTS FOR GAS AND DUST APPLICATIONS

LIGHTING, PLUGS AND SOCKETS, CONTROL STATIONS AND JUNCTION BOXES,

FNES SERIES (ZONES 2 – 21 & 22)



Ex nR LED EMERGENCY LIGHTING SYSTEM – 1 M20 CABLE GLAND SUPPLIED

CATALOG NUMBERS

Escape Route Lighting – Rated Flow 55 Lumens

FNESLEDEU

Space Lighting – Rated Flow 540 Lumens

FNESLEDSL

TCH SERIES (ZONES 1 & 2 – 21 & 22)



Ex eib FLASHLIGHT

CATALOG NUMBER

Halogen 2.8V – 0.5A

TCH12H

– 2 R20 or LR20 Batteries, Not Supplied

PRE SERIES (ZONES 1 & 2 – 21 & 22)



EXPLOSIONPROOF CLASS Ex de – 1 M20 CABLE GLAND SUPPLIED

**SOCKET
CATALOG NUMBERS**

**PLUG
CATALOG NUMBERS**

2P + T – 16A – 200/250V – 50/60 Hz

PRE316RB

PRE316PB

3P + T – 16A – 380/415V – 50/60 Hz

PRE416RR

PRE416PR

3P + T – 32A – 380/415V – 50/60 Hz

PRE432RR

PRE432PR

UNICODE 2 SERIES (ZONES 1 & 2 – 21 & 22)



Ex de CONTROL STATION

MATERIAL

CATALOG NUMBERS

Emergency Stop (1 “Closed” + 1 “Open”) – 2 x M20

Polyamide

U41W2D3

On/Off (“Open + Closed” + “Open + Closed”) – 2 x M20

Polyamide

U42W2A3A3

Red Pilot Light + On/Off
 (“Open + Closed” + “Open + Closed”) – 2 x M20

316 Stainless Steel

U62W2PRA3A3

JBDR SERIES (ZONES 1 & 2 – 21 & 22)



Ex d ALUMINIUM JUNCTION BOX

CATALOG NUMBERS

3 M20 Cable Entries

JBDR30

4 M20 Cable Entries

JBDR40

Terminal Block (4 Terminals, Capacity 4 x 4 mm² or 2 x 6 mm²)

TBP44

JBEL SERIES (ZONES 1 & 2 – 21 & 22)



Ex e POLYCARBONATE JUNCTION BOX 2.5/4 mm² – 660 V

CATALOG NUMBERS

4 PG16 Cable Entries With Integrated Cable Glands

JBEL1N4P16G

4 M20 Cable Entries for Armored Cables

JBEL1A4M20

SWE SERIES (ZONES 1 & 2 – 21 & 22)



Ex de 16A POLYAMIDE SWITCH (2 M20 CABLE GLANDS SUPPLIED)

CATALOG NUMBERS

2 Poles – 2 M20 Cable Entries

SWE016S201AG

Two-way – 2 M20 Cable Entries

SWE016C101AG

SWD SERIES (ZONES 1 & 2 – 21 & 22)



Ex d 16A ALUMINIUM SWITCH

CATALOG NUMBERS

2 Poles – 2 M20 Cable Entries

SWD016S200A

Two-way – 2 M20 Cable Entries

SWD016C100A

SELECT YOUR APPLETON ATX PRODUCTS FOR GAS AND DUST APPLICATIONS

CABLE GLANDS



EEXe SERIES (ZONES 1 & 2 – 21 & 22)



CABLE GLAND (POLYAMIDE)	CATALOG NUMBERS
M20	095605
M25	095606
M32	095757

A2F SERIES (NON-ARMORED CABLE) (ZONES 1 & 2 – 21 & 22)



CABLE GLAND (NICKEL PLATED BRASS)	CATALOG NUMBERS
M20S	20SA2F5
M20	20A2F5
M25	25A2F5
M32	32A2F5

E1FX SERIES (ARMORED CABLE) (ZONES 1 & 2 – 21 & 22)



CABLE GLAND (NICKEL PLATED BRASS)	CATALOG NUMBERS
M20S	20SE1FX5
M20	20E1FX5
M25	25E1FX5
M32	32E1FX5

T3 SERIES (ARMORED CABLE) (ZONES 1 & 2 – 21 & 22)



CABLE GLAND (NICKEL PLATED BRASS)	CATALOG NUMBERS
M20S	20ST35
M20	20T35
M25	25T35
M32	32T35

PX2K SERIES (ARMORED CABLE) (ZONES 1 & 2 – 21 & 22)



BARRIER GLAND (NICKEL PLATED BRASS)	CATALOG NUMBERS
M20S	20SPX2K5
M20	20SPX2K5
M25	25PX2K5
M32	32PX2K5



SELECT YOUR APPLETON ATX PRODUCTS FOR GAS AND DUST APPLICATIONS

MADE TO ORDER EQUIPMENT

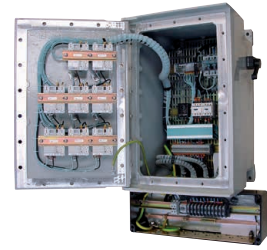
(ZONES 1 & 2 – 21 & 22)



Ex ia Stainless Steel Junction Box



Coffret d'instrumentation "Inox" Ex ia



Ex d Panelboard with
8 Branch Circuit Breakers Coupled with Ex e
Polyester Junction Box



Ex d Control Panel



Ex d Double Sided Switchrack

NEW



Ex de P Series PowerPlex™ Distribution
Panelboards

LED LIGHTING — ATEX/IECEx (ZONES 2 – 21 & 22)

Areamaster™ LED



Floodlight — AMLED Series

Mercmaster™ LED



Luminaire — MLEDNA Series

NEW

Viamaster™ Linear LED



Linear Luminaire — LLEDA Series

ATX IS AT YOUR SERVICE TO PROVIDE ANY ADDITIONAL INFORMATION YOU MAY REQUIRE ON THE ATEX DIRECTIVES



The master catalog is available in French and English, containing almost 3,000 products and 58 pages of information on standards.

For a free copy, fax your request on your company letterhead to + 33 3 22 54 28 34.

For further information on ATEX Directives, contact us via telephone at:
(Amiens, France) + 33 3 22 54 13 90.

Refer to the Appleton website (www.appletonelec.com) to locate the sales representative in your region.

Product Certificates and CE Declarations of Conformity available at: www.appletonelec.com.

Appleton is our premium line of industrial electrical products under Appleton Group, a business unit of Emerson Industrial Automation. Appleton products are engineered to solve operational problems, designed with the user in mind, and built for the global marketplace. Distributors, contractors, engineers, electricians and site maintenance professionals around the world trust Appleton to make electrical installations safer, more productive and more reliable.

Emerson Industrial Automation brings integrated manufacturing solutions to diverse industries worldwide. Our comprehensive product line, extensive experience, world-class engineering and global presence enable us to implement solutions that give our customers the competitive edge.

For over 150 years, our electrical product brands have been providing a rich tradition of long-term, practical, high quality solutions with applications ranging from the construction and safe operation of petrochemical and process plants to providing quality power that precisely controls automotive robotic production.

Engineers, distributors, contractors, electricians and site maintenance professionals around the world trust Emerson Industrial Automation brands to make electrical installations safer, more productive and more reliable.

Appleton Group is organized into three focused businesses that provide distributors and end-users expert knowledge and excellent service.

Electrical Construction Materials

This group is made up of the Appleton, Nutsteel and O-Z/Gedney brands. They manufacture a broad range of electrical products including conduit and cable fittings, plugs and receptacles, enclosures and controls, conduit bodies and industrial and hazardous lighting. Whether the application is hazardous location, industrial or commercial, the electrical construction materials group has the products to meet your needs.

Power Quality Solutions

The SolaHD brand offers the broadest power quality line, including uninterruptible power supplies, power conditioners, voltage regulators, shielded transformers, surge protection devices and power supplies.

Heating Cable Systems

This group is made up of the EasyHeat and Nelson brands. They offer a broad range of electrical heating cable products for residential, commercial and industrial applications.

Asia/Pacific
+ 65.6891.7600

Australia
+ 61.3.9721.0348

Brazil — São Paulo/SP
+ 55.11.2122.5777

Brazil — Camaçari/BA
+ 55.71.3496.4427

Canada
+ 1.888.765.2226

China
+ 86.21.3418.3888

Europe
+ 33.3.2254.1390

Mexico/Latin America
+ 52.55.5809.5049

Middle East/Africa/India
+ 971.4.811.8100

United States
+ 1.800.621.1506

Registered Office:

ATX S.A

ESPACE INDUSTRIEL NORD

35 RUE ANDRE DUROUCHEZ

CS 98017

80084 AMIENS CEDEX 2 FRANCE

Tel. no.: + 33 3 22 54 13 90

Fax no.: + 33 3 22 54 28 34