



ANDERSON GREENWOOD MARVAC FIGURE 121 PRESSURE AND VACUUM RELIEF VALVE INSTALLATION AND MAINTENANCE INSTRUCTIONS

Read Anderson Greenwood Marvac general instructions before continuing

SAFETY PRECAUTIONS

Read and understand this instruction manual before installing, operating or performing maintenance on Figure 121 pressure and vacuum relief valves. Follow all precautions and warnings noted herein when installing, operating or performing maintenance on this equipment.

NOTE

This manual is issued for guidance only and does not affect our standard terms and conditions and our product limited warranty, all of which are available on request.

1 INSTALLATION

Figure 121 pressure and vacuum relief valves must be mated with the appropriate flange.

1. These valves must be gasketed and bolted to a flat machined horizontal flange. Bolts must be tightened uniformly to ensure a good seal.
2. This valve does not contain any internal packing. Therefore, internal checks should not be necessary.
3. It is recommended that carbon steel valves be given a coat of paint immediately after installation is complete. Apply paint to external surfaces only.

2 MAINTENANCE (during atmospheric venting period)

WARNING

The relief valve must be isolated from tank pressure before servicing. All gas must be blocked and pressure vented safely. Wear appropriate gloves and/or breathing apparatus if hazardous vapors are present.

Refer to Figure 1

1. Remove weather hood (item 3) and vacuum cover (item 7), inspect O-ring in vacuum cover for damage and replace if necessary.
2. Remove pallet assembly to inspect pallet seating for wear and replace if necessary.
3. To replace damaged/worn items from pallet assembly (see recommended spares):
 - a. remove nut from pallet stem, remove support disc, diaphragm and backing disc
 - b. clean pallet surface and threads
 - c. replace with new parts
 - d. reassemble in reverse order
4. Inspect valve seat (item 2) for wear and regrind or replace where necessary.
5. Clean seating surface thoroughly with suitable solvent and apply a thin smear of light spindle oil.
6. Generally clean the inside of the valve, remove all foreign matter and repaint exterior where possible to prevent corrosion.
7. Replace pressure pallet on pressure seat and vacuum pallet (with lead disc if fitted).
8. Replace weather hood, secure with hand nuts.
9. Replace vacuum cover and replace sealing washers if necessary, secure with screws.

NOTE

The efficiency of the valve depends on maintaining good seating surfaces. Therefore, maintenance periods should be adjusted to suit service conditions.

ANDERSON GREENWOOD MARVAC FIGURE 121 PRESSURE AND VACUUM RELIEF VALVE

INSTALLATION AND MAINTENANCE INSTRUCTIONS

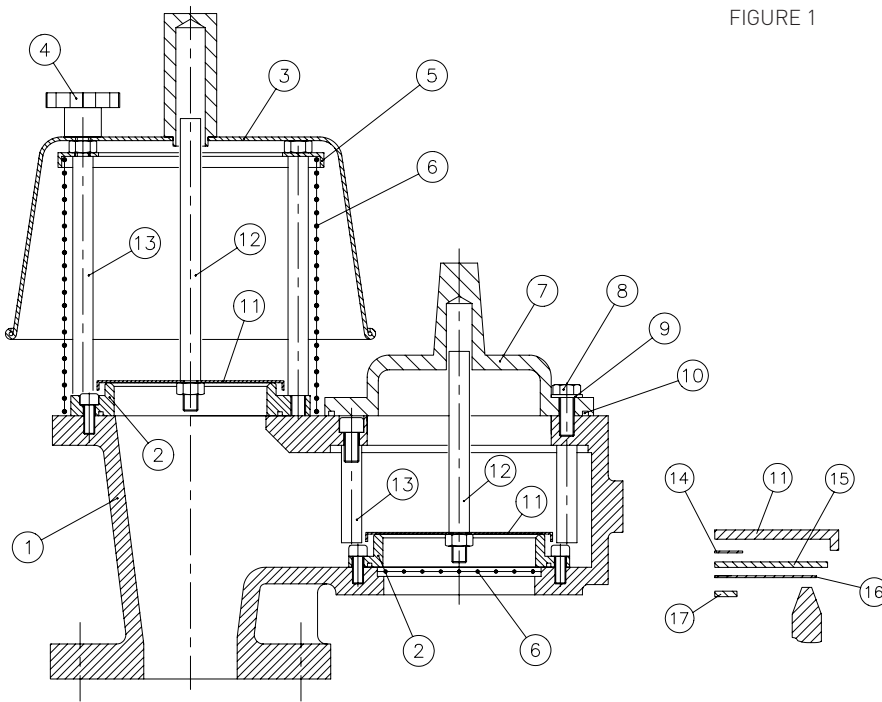


FIGURE 1

3 RECOMMENDED SPARES

1. Item 10 Nitrile o-ring
2. Item 9 Sealing washers
3. Item 14 Spacer disc (non-asbestos fiber)
4. Item 15 Diaphragm backing disc (non-asbestos fiber)
5. Item 16 Diaphragm (PTFE)

PARTS LIST

Item	Description	Alum spec.	C.steel	SS spec
1	Valve body	Aluminum	W.C.B.	316 SS
2	Removable seat	Aluminum	316 SS	316 SS
3	Weather hood	Aluminum	C.Steel	316 SS
4	Handle nuts	Phenolic	Phenolic	Phenolic
5	Screen ring	Aluminum	C.Steel	316 SS
6	Screen	Galv St	Galv St	18/8 SS
7	Cover	Aluminum	W.C.B.	316 SS
8	Cover screws	ZP Steel	ZP Steel	18/8 SS
9	Sealing washers	G Fiber	G Fiber	G Fiber
10	O-ring seal	Nitrile	Nitrile	Nitrile
11	Pallet	316 SS	316 SS	316 SS
12	Pallet stem	316 SS	316 SS	316 SS
13	Pallet guide posts	316 SS	316 SS	316 SS
14	Spacer disc	Non-asbestos	Non-asbestos	Non-asbestos
15	Diaphragm back.disc	Non-asbestos	Non-asbestos	Non-asbestos
16	Diaphragm	PTFE	PTFE	PTFE
17	Diaphragm supp.disc	316 SS	316 SS	316 SS

Neither Emerson, Emerson Automation Solutions, nor any of their affiliated entities assumes responsibility for the selection, use or maintenance of any product. Responsibility for proper selection, use, and maintenance of any product remains solely with the purchaser and end user.

Anderson Greenwood is a mark owned by one of the companies in the Emerson Automation Solutions business unit of Emerson Electric Co. Emerson Automation Solutions, Emerson and the Emerson logo are trademarks and service marks of Emerson Electric Co. All other marks are the property of their respective owners.

The contents of this publication are presented for informational purposes only, and while every effort has been made to ensure their accuracy, they are not to be construed as warranties or guarantees, express or implied, regarding the products or services described herein or their use or applicability. All sales are governed by our terms and conditions, which are available upon request. We reserve the right to modify or improve the designs or specifications of such products at any time without notice.