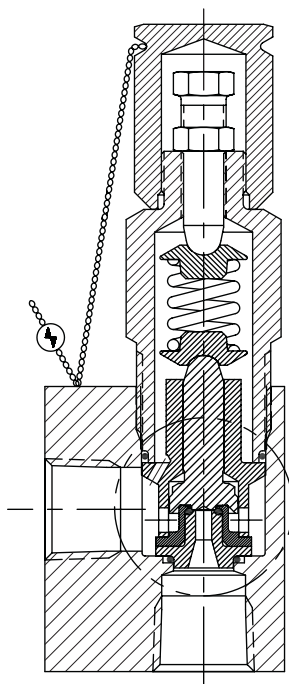




## ANDERSON GREENWOOD SERIES 89 SAFETY RELIEF VALVES MAINTENANCE INSTRUCTIONS

Before installation these instructions must be fully read and understood



The intent of these instructions is to acquaint the user with the maintenance of this product. Please read these instructions carefully.

### WARNING

*The protection and safety of equipment, property and personnel depends on the proper operation of the safety valves described in this manual. All Emerson safety valves should be kept in proper working condition in accordance with the manufacturer's written instructions. Periodic testing and maintenance by the user of this equipment is essential for reliable and safe valve operation.*

*All installation, maintenance, adjustment, repair and testing performed on safety valves should be done by qualified technicians having the necessary skills and training adequate to perform such work. All applicable codes and standards, governing regulations and authorities should be adhered to when performing safety valve repair. No repair, assembly, adjustment or testing performed by other than Emerson or its authorized assemblers and representatives shall be covered by the warranty extended by Emerson to its customers.*

*The user should use only original, factory supplied OEM parts in any maintenance or repair activity involving this product.*

*These Maintenance Instructions are provided as a general guide for the repair and maintenance of the safety valves described herein. It is not possible to describe all configurations or variations with such equipment. The user is advised to contact Emerson or its authorized assemblers and representatives for assistance in situations that are not adequately covered or described in this manual.*

*Before removing a safety valve for maintenance, ensure that the system pressure has been fully depressurized. If an isolation block valve is used ensure that any trapped fluid between the block valve and the safety valve is safely vented.*

*Before disassembling the safety valve ensure that the valve has been decontaminated from any harmful gasses or fluids and that it is at a safe temperature range for handling. Fluids can be trapped in the dome space of pilot operated safety valves.*

*Before installation, the Installation and Operational Safety Instructions should be fully read and understood. These Instructions may be requested from the factory or are available at [Emerson.com/FinalControl](http://Emerson.com/FinalControl).*

The safety of lives and property often depends on the proper operation of the safety valve. The valve must be maintained according to appropriate instructions and must be periodically tested and reconditioned to ensure correct function.

### SAFETY PRECAUTIONS

When the safety valve is under pressure never place any part of your body near the outlet of the valve.

The valve outlet and any separate drains should be piped or vented to a safe location.

Always wear proper safety gear to protect hands, head, eyes, ears, etc. anytime you are near pressurized valves.

Never attempt to remove the safety valve from a system that is pressurized.

Never make adjustments to or perform maintenance on the safety valve while in service unless the valve is isolated from the system pressure. If not properly isolated from the system pressure, the safety valve may inadvertently open resulting in serious injury.

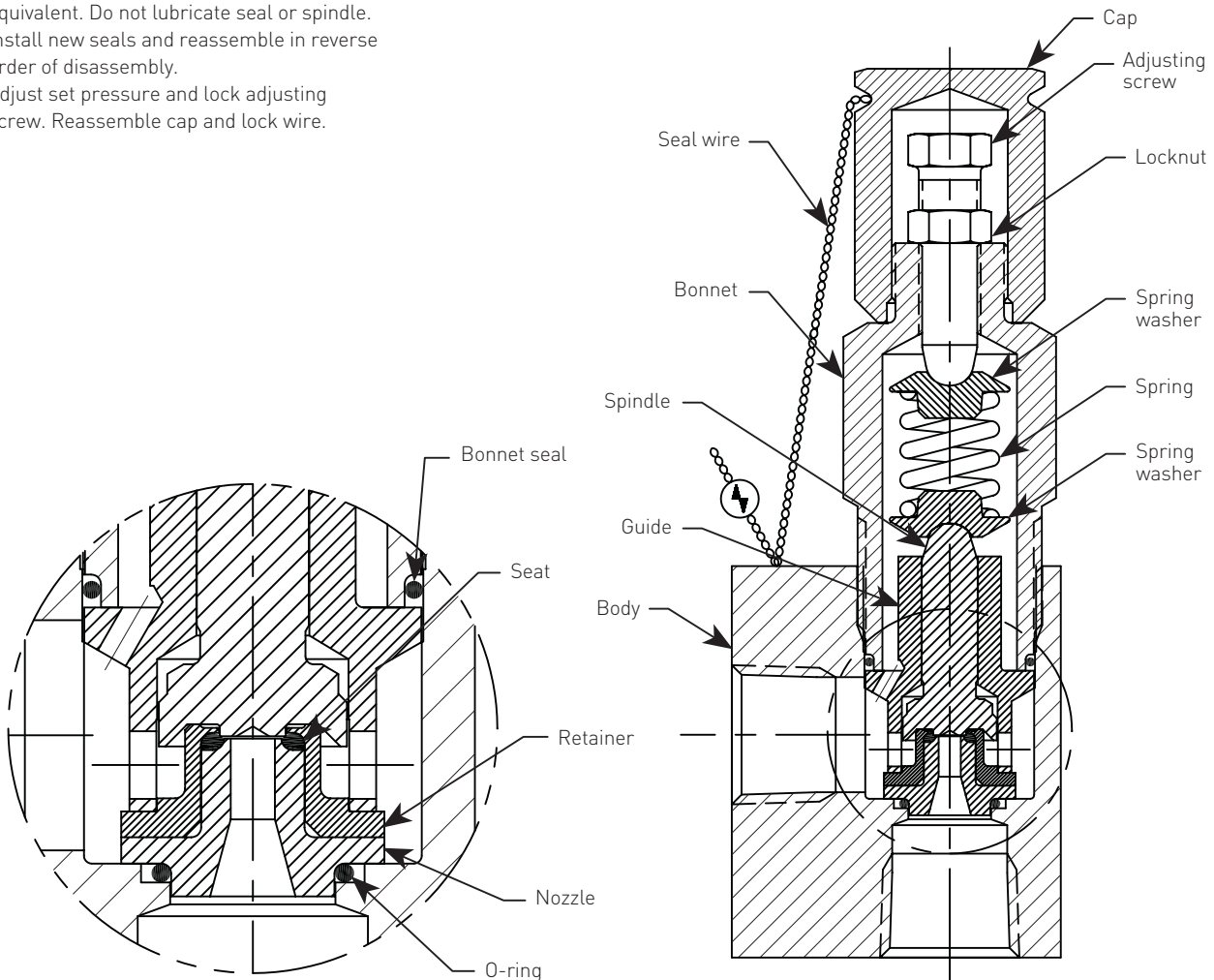
Remove the safety valve prior to performing any pressure testing of the system.

# ANDERSON GREENWOOD SERIES 89 SAFETY RELIEF VALVES

## MAINTENANCE INSTRUCTIONS

### SERIES 89 SAFETY RELIEF VALVE MAINTENANCE INSTRUCTIONS

1. Break seal wire and remove cap.
2. Remove tension from spring by turning adjusting screw counterclockwise. Unscrew bonnet counterclockwise and remove.
3. Remove valve internals and discard all seals.
4. Lubricate threads on pressure adjustment screw, bonnet, and spring washer bearing points with Dow Corning Molykote "33" or equivalent. Do not lubricate seal or spindle.
5. Install new seals and reassemble in reverse order of disassembly.
6. Adjust set pressure and lock adjusting screw. Reassemble cap and lock wire.



Neither Emerson, Emerson Automation Solutions, nor any of their affiliated entities assumes responsibility for the selection, use or maintenance of any product. Responsibility for proper selection, use, and maintenance of any product remains solely with the purchaser and end user.

Anderson Greenwood is a mark owned by one of the companies in the Emerson Automation Solutions business unit of Emerson Electric Co. Emerson Automation Solutions, Emerson and the Emerson logo are trademarks and service marks of Emerson Electric Co. All other marks are the property of their respective owners.

The contents of this publication are presented for informational purposes only, and while every effort has been made to ensure their accuracy, they are not to be construed as warranties or guarantees, express or implied, regarding the products or services described herein or their use or applicability. All sales are governed by our terms and conditions, which are available upon request. We reserve the right to modify or improve the designs or specifications of such products at any time without notice.