

Sanitary Steam Traps and Regulators



Sanitary Solutions for Pharmaceutical, Food, Beverage and Other Industries



Yarway™ Sanitary Steam Traps

Balanced pressure, self-draining, 316L stainless steel steam traps that are suitable for removing condensate from clean steam systems.

Yarway Portfolio Highlights

- Multiple orifice sizes for sizing flexibility
- Optional SLR orifice for improved sensitivity
- Self-centering valve for leak-tight shutoff
- Easily disassembled for cleaning and inspection
- Sensitive bellows available for 3°F sub-cool
- Designed to drain completely without puddling
- Horizontal and vertical connection options
- FDA, USP Class VI and ASME BPE Compliance

Fisher™ Sanitary Regulators

Self-draining pressure reducing and backpressure regulators for clean steam and other applications.

Fisher Portfolio Highlights

- Non-porous polished body and internals
- Superior flow performance and accuracy
- Lock-in-place pin prevents closing during CIP / SIP
- Upper guide ring provides stable control
- Wide control range for various applications
- Metal diaphragm designed to maximize cycle life
- Designed for easy maintenance
- FDA, USP Class VI, ADI and ASME BPE Compliance



Yarway™ Sanitary Steam Traps

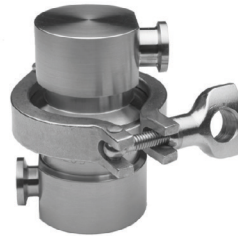
Balanced pressure steam traps with Inconel® welded bellows and 316L stainless steel body and wetted parts. All traps have high-grade mechanical polishing with electropolish option.

ST600 Series



- Sizes: 1/2 in. to 1-1/2 in.
- Maximum Allowable Pressure: 150 psi
- Maximum Allowable Temperature: 366°F
- Various orifice sizes available for sizing flexibility
- Self-draining for vertical installation
- SLR option for immediate elimination of condensate
- Tri-clamp connections
- Sensitive bellows option available
- FDA, USP Class VI and ASME BPE Compliance

ST800 Series

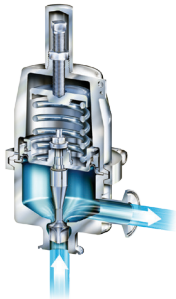


- Sizes: 1/2 in. and 3/4 in.
- Maximum Allowable Pressure: 150psi
- Maximum Allowable Temperature: 366°F
- Universally configurable with horizontal and vertical connections
- SLR option for immediate elimination of condensate
- Sanitary ferrule connection
- Sensitive bellows option available
- FDA, USP Class VI and ASME BPE Compliance

Fisher™ Sanitary Pressure Regulators

Pressure reducing and backpressure regulators designed for superior flow performance and accuracy. Suitable for steam and other fluids.

SR5/SR8 Series



- Self-draining feature
- Materials: 316L stainless steel body, plug and diaphragm plate
- All internal wetted surfaces are mechanically polished and electropolished to 20 µin
- Sizes: 1/2 in. to 3 in.
- Maximum Operating Pressure: 210 psi⁽¹⁾
- Maximum Temperature : 400°F
- Tri-clamp connections⁽²⁾
- FDA, USP Class VI, ADI and ASME BPE Compliance

MR95/MR98 Series



- Materials: 316 Stainless Steel metal parts, NBR/FKM/EPDM/PTFE/FFKM Elastomer parts
- Sizes: 1/4 in to 2 in
- Maximum Operating Pressure: 1000 psi⁽¹⁾
- NPT/Flanged connections
- FDA, USP Class VI, ADI compliance

T205/T208 Series



- Materials: 316 Stainless Steel metal parts, NBR/FKM/EPDM/PTFE/FFKM Elastomer parts
- Sizes: 3/4 in to 1 in
- Maximum Operating Pressure: 200 psi⁽¹⁾
- NPT/Flanged connections
- FDA, USP Class VI, ADI compliance

1. Maximum pressure to prevent damage to internal parts and leakage to atmosphere
2. End connection clamps and gaskets provided by end-user

Emerson Automation Solutions

Americas

T +1 800 558 5853
T +1 972 548 3574

✉ webadmin.regulators@emerson.com

🔍 Emerson.com

Europe

T +39 051 419 0611

📘 Facebook.com/EmersonAutomationSolutions

Asia Pacific

T +65 6777 8211

🌐 LinkedIn.com/company/emerson-automation-solutions

🐦 Twitter.com/emr_automation

Middle East / Africa

T +971 4811 8100