

# Slam-shut valves give you the peace of mind knowing that customers and assets are protected



**FISHER™**

**Protect your customers and assets from under and overpressure events while meeting safety and regulatory requirements.**

## Overview

Slam-shut valves are designed to rapidly shut off the gas flow when the pipeline pressure exceeds or falls below predefined levels. Emerson offers both standalone slam-shuts and integral regulator/slam-shut combinations that utilize a common body where the slam-shut is able to act independently of the regulator.

## Applications

- Transmission
- Distribution
- City Gate
- Commercial Service
- Industrial Service
- Residential Service

## Benefits

- **System Protection**—Under-pressure and/or overpressure protection of your downstream systems and equipment
- **Zero Emissions**—Environmentally friendly with no leaking or venting to atmosphere
- **Positive Shutoff**—ANSI/FCI Class VIII Bubble-tight shutoff to downstream equipment and systems
- **Easy In-Line Maintenance**—Internal parts can be inspected and replaced without removing the body from the pipeline
- **Reliability**—Trip mechanism designed with accuracy and vibration resistance to avoid unintentional trips



**EMERSON. CONSIDER IT SOLVED.™**

# Slam-shut devices protect your system from under and overpressure events

## Slam-Shut Devices



### VS100 Standalone Series

- Medium and high capacity body sizes available
- Instantaneous response time
- Complies with the Pressure Equipment Directive (97/23/EC) Requirements
- Modular body construction



### Type OSE

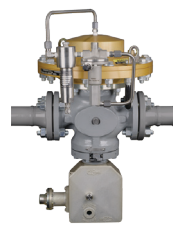
- Overpressure and under-pressure protection
- High shock and vibration resistance – two-stage tripping mechanism
- Maintains up to  $\pm 1\%$  accuracy regardless of inlet pressure, flow rate and size of slam-shut
- Water tight for pit service to 10 ft / 3.0 m
- Remote activation alarm capability

## Integral Slam-Shut Devices



### CS804 Series

- Includes the Type VSX8 Slam-shut module for both overpressure and under-pressure protection
- Can be installed in any position (spring case vent to be pointing downward)
- Minimizes cost of ownership
- Simplified maintenance



### Type EZL-OSX

- Two configurations: OPSO and OPSO/UPSO
- Manual intervention is required for reset meeting DOT requirements
- Can be installed in any position
- Bubble-tight shut off
- Thoroughly tested, high accuracy and robust in design



### Type EZH-OSX

- Type EZH with a Type OS2 slam-shut device for OPSO/UPSO
- Eliminates nuisance and wasteful bleed gas to atmosphere by utilizing a self-contained control system
- Metal plug design deflects particles and debris thereby providing long life in severe service applications



### Type 299HV

- Small envelope because of the built-in pilot and internal registration combined with a Type VSX8 slam-shut
- Wide variety of applications – natural gas distribution systems, furnaces, ovens, mixers
- Economical, labor-saving installation

## Emerson Automation Solutions

### Americas

T +1 800 558 5853  
T +1 972 548 3574

### Europe

T +39 051 419 0611

### Asia Pacific

T +65 6777 8211

### Middle East / Africa

T +971 4811 8100

 [webadmin.regulators@emerson.com](mailto:webadmin.regulators@emerson.com)

 [Fisher.com](http://Fisher.com)

 [Facebook.com/EmersonAutomationSolutions](https://www.facebook.com/EmersonAutomationSolutions)

 [LinkedIn.com/company/emerson-automation-solutions](https://www.linkedin.com/company/emerson-automation-solutions)

 [Twitter.com/emr\\_automation](https://twitter.com/emr_automation)