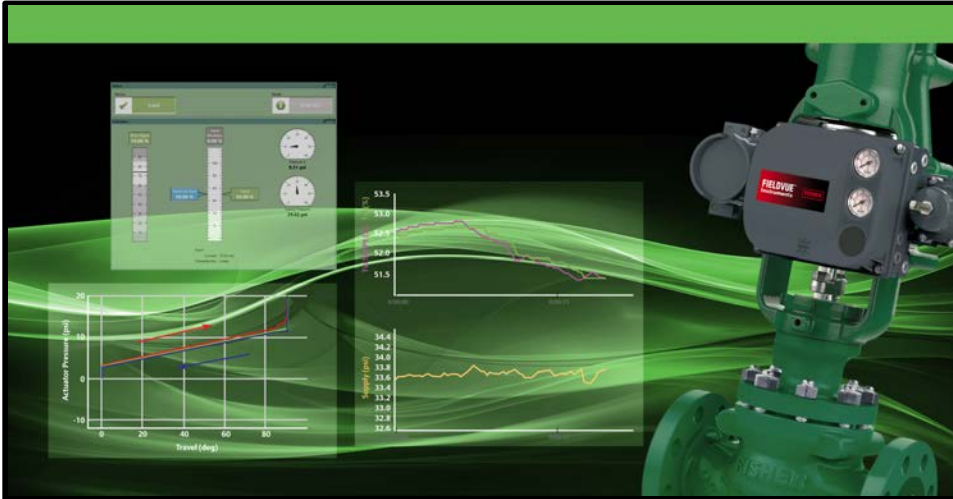


ValveLink™ Software



ValveLink™ Solo
ValveLink™ SNAP-ON™

ValveLink™ DTM
ValveLink™ PLUG-IN for PRM®

- Communicate with both HART® and FOUNDATION™ Fieldbus FIELDVUE™ digital valve controllers
- Configure, calibrate, and diagnose FIELDVUE instruments from one location
- Use Stabilize & Optimize and Performance Tuner to easily optimize tuning
- Performance Diagnostics provide in-service diagnostics for monitoring the health of the valve assembly without disturbing the process
- Diagnostics provide validation of assembly rebuild and detailed insight into the physical condition of the valve/actuator assembly
- Setup and test FIELDVUE instruments for Safety Instrumented System (SIS) Solutions
- Solenoid Valve Test to test and monitor the health of the solenoid connected to the valve assembly (SIS only)
- Scheduler allows you to specify a time and date to automatically run tasks on a regular basis
- Ability to preconfigure calibration and diagnostics in the workshop with Batch Runner or setup your own “Macro” file
- Time saving Concurrent Batch allows executing a diagnostic test or Calibration on multiple valves at the same time
- Merge Database feature provides the ability to automate multiple ValveLink databases and tags to a single or multiple stations
- ValveLink Express licensing allows you to obtain a free version of ValveLink software that allows FIELDVUE instrument setup, calibration and verification
- Generate diagnostic, calibration, and configuration reports in Microsoft® Word and PDF format

ValveLink Software Product Suite

ValveLink software is available in a variety of configurations to allow you to realize the full benefit of FIELDVUE digital valve controllers.

ValveLink Solo



ValveLink Solo permits users to perform configuration, calibration, and diagnostics on HART and FOUNDATION Fieldbus FIELDVUE digital valve controllers.

Integrate ValveLink software into AMS Device Manager



ValveLink SNAP-ON provides integration with AMS Device Manager to perform configuration, calibration, and diagnostics. Integration with AMS Device Manager provides the ability to communicate with FIELDVUE digital valve controllers via DeltaV™, Ovation™, PROVOX™, HART multiplexers, and HART modems. Non-Emerson host integration, including Invensys and Honeywell (HART only) systems, can be provided through HSI (Host System Integration).

Integrate ValveLink DTM into Field Device Tool - FDT



ValveLink DTM provides integration into a Field Device Tool frame application to perform configuration, calibration, and diagnostics on FIELDVUE digital valve controllers. The ValveLink DTM is certified with the FDT group.

Integrate ValveLink Software into the Yokogawa Plant Resource Manager (PRM)

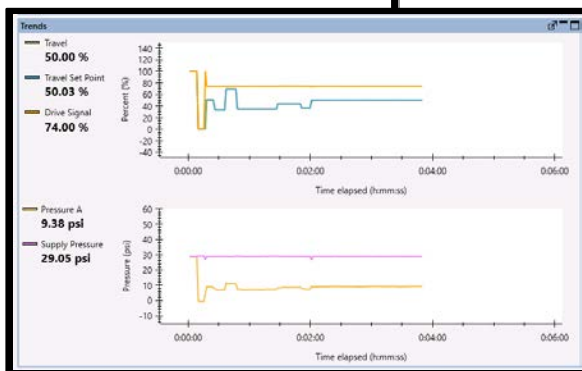
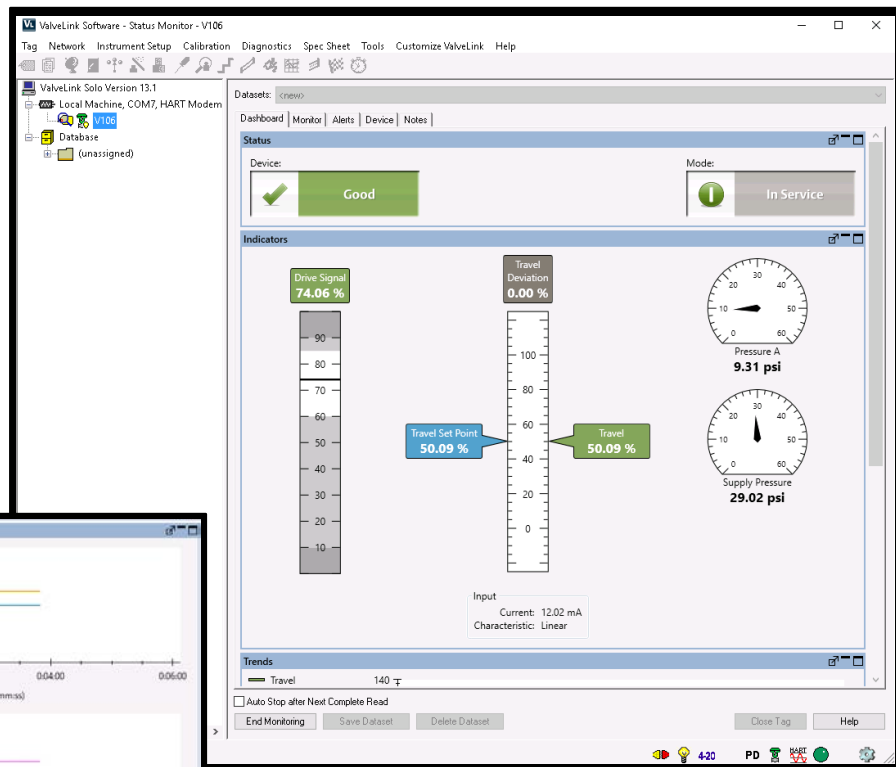


ValveLink PLUG-IN for PRM provides integration with the Yokogawa Plant Resource Manager (PRM). This integration provides PRM users with the ability to launch the ValveLink PLUG-IN for PRM directly from PRM and to communicate with HART and FOUNDATION fieldbus FIELDVUE digital valve controllers through PRM and the Yokogawa CENTUM CS 3000 R3 and CENTRUM VP.

Communicate with both HART and FOUNDATION fieldbus FIELDVUE digital valve controllers

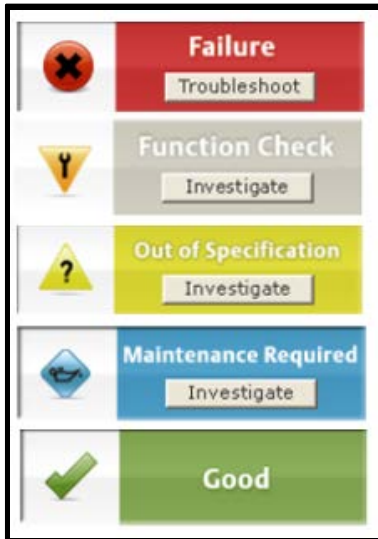
Integrated or standalone ValveLink software remotely communicates with HART FIELDVUE instruments over the existing 4-20 mA signal wiring using the HART communication standard. The same software also can communicate with FOUNDATION Fieldbus FIELDVUE instruments over the fieldbus H1 segment. Information is presented in a consistent, easy-to-interpret interface that provides the capability to configure, calibrate, and diagnose FIELDVUE instruments from one location:

- Dashboard of critical instrument information
- A device connection view of all connected instruments
- Monitoring of instrument operational parameters and alerts, including Field Diagnostic alerts
- Review and comparison of diagnostic graphs
- Instrument setup and calibration
- Data import and export
- Schedule diagnostic tests
- Time-Saving tools such as Batch Runner and Concurrent Batch Runner



Trend Travel, Pressure, and Drive Signal

Field Diagnostic Alerts, which follow the NAMUR NE107 Standard, allow categorization of **Device Alerts** with the highest severity displayed on the dashboard.



Alert categorization

Status Monitor

Travel Deviation		
	Field Diagnostic Alert	F/O
	Travel Deviation	No
Travel Limit		
	Field Diagnostic Alert	F/C/O/M
	Travel Limit High High	Yes
	Travel Limit Low Low	No

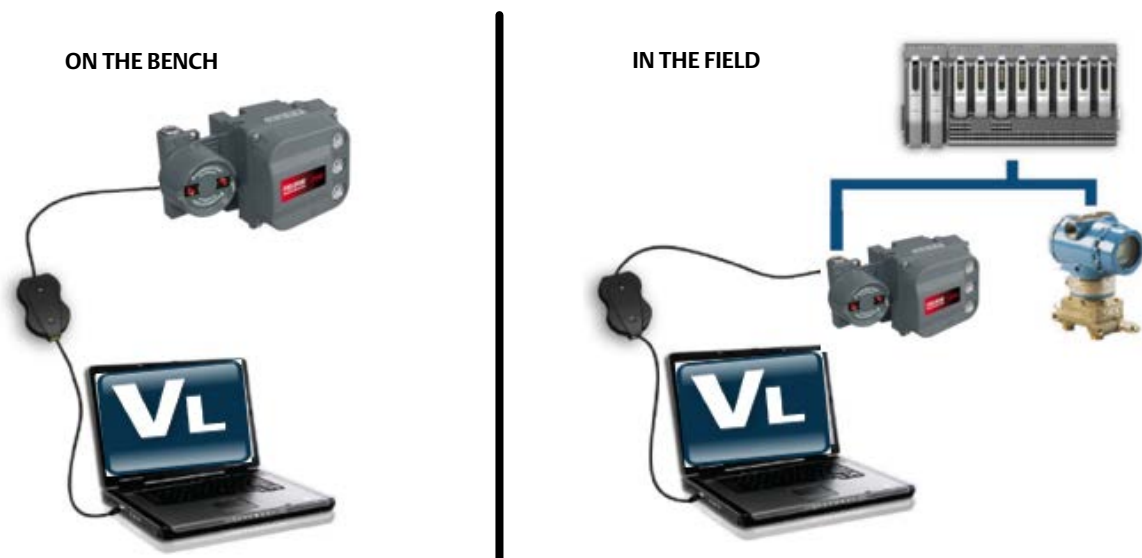
Device alerts, such as Travel Deviation, are permanently mapped to a Field Diagnostic Alert in FOUNDATION Fieldbus applications. Multiple Field Diagnostic categories can be selected per Field Diagnostic Alerts.

Status Monitor

Alert Variable	Field Diagnostic	Status
Travel Low Low		
Travel Low		
Alert Record Not Empty		
Configuration Changed		
SIS Hardware Failure		

HART applications allow one Field Diagnostic Category per Field Diagnostic Alert

Standalone ValveLink software can use the Emerson USB Fieldbus Interface, as well as the National Instruments (NI-Fbus) interface to connect to Fieldbus FIELDVUE instruments (DVC6200f and DVC6000f) to configure, calibrate, and diagnose the device on a bench or in the field:



Use the Performance Tuner to easily optimize tuning

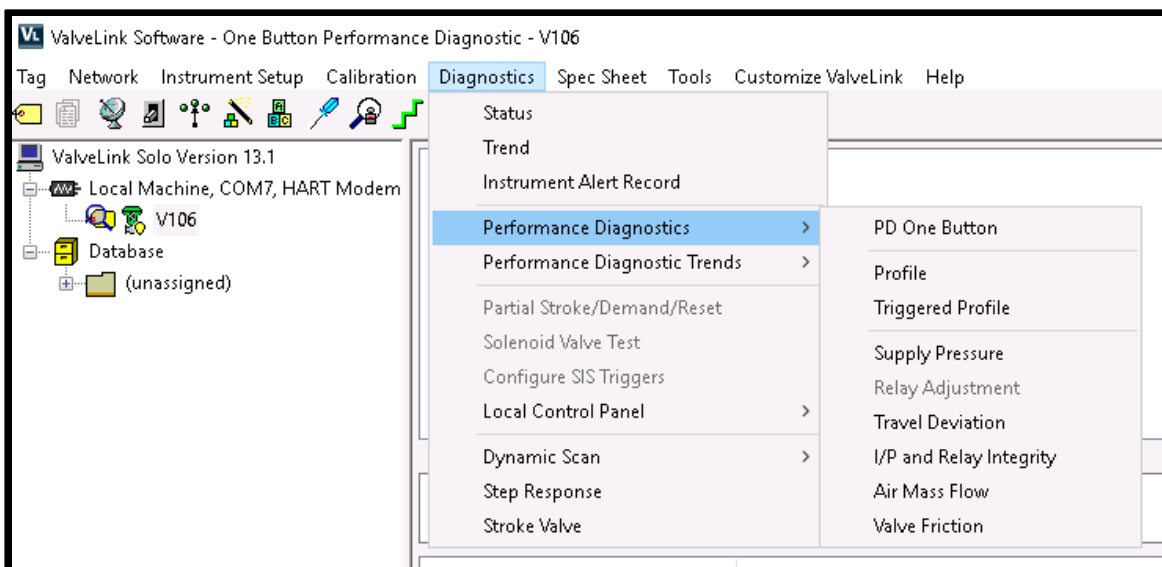
The Performance Tuner lets you easily adjust a FIELDVUE digital valve controller for optimum performance. When mounting a FIELDVUE digital valve controller, to either a Fisher or a non-Fisher valve, the Performance Tuner can optimize valve performance for you.

Performance Diagnostics provide in-service diagnostics for monitoring the health of the valve assembly without disturbing the process

Performance Diagnostics (PD) provides predictive in-service diagnostics for monitoring the health of the valve assembly and customized diagnostics for advanced troubleshooting. Performance Diagnostics continuously analyze the valve assembly and passively gather data without disturbing or interrupting the control valve while it is in the process.

PD may be used to help detect problems with air leakage, valve assembly friction and deadband, instrument air quality, loose connections, supply pressure restriction, and valve assembly calibration. When a problem is identified, the diagnostic provides a description and severity of the problem, a probable cause, and recommended action.

In-service diagnostics for troubleshooting allow custom diagnostics to be set up to collect data at a high-frequency collection rate and present the data in a graphical format.



Performance Diagnostics tests are available upon user request or a pre-selected daily, weekly, monthly, or yearly schedule without user intervention for HART instruments

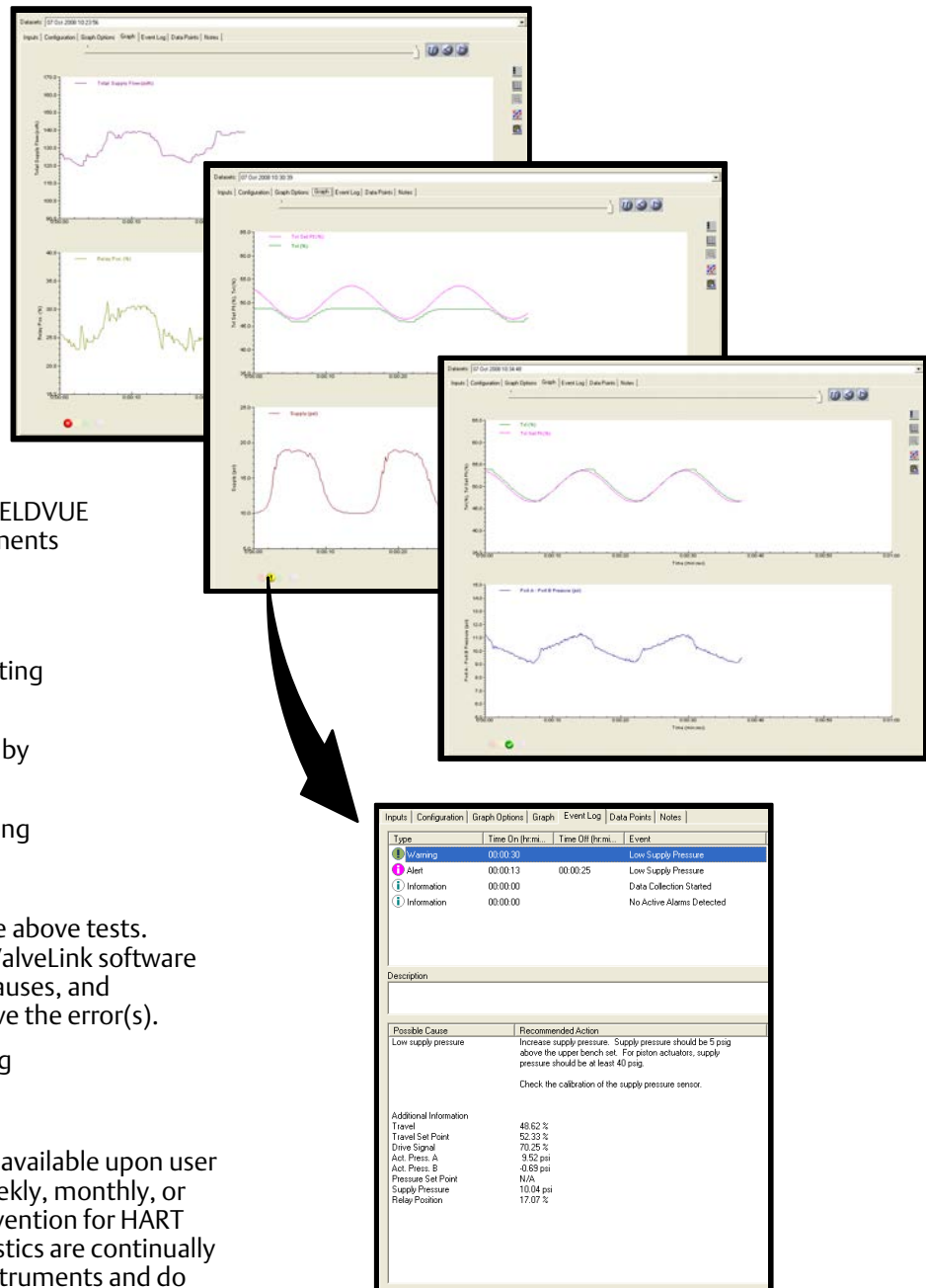
Performance Diagnostics are continually running in FOUNDATION Fieldbus Instruments and do not need to be initiated by ValveLink software

Provide Real-Time Notification of Current and Potential Valve and Instrument Problems using Performance Diagnostics

Performance Diagnostics enable the use of diagnostics while the valve is in-service and operating without disturbing the process. Tests can be performed to identify problems with the entire control valve assembly, such as:

- Red/Yellow/Green condition indicator provides a quick visual indication of the following:
 - the physical condition of the FIELDVUE instrument pneumatic components
 - instrument air supply pressure and volume
 - relay adjustment on double acting piston actuators
 - the total air received and used by the instrument, and
 - why a valve assembly is deviating from the set point
- PD One Button is a sweep of the above tests. When the sweep is complete, ValveLink software will show any errors, possible causes, and recommended actions to resolve the error(s).
- Friction and Deadband Trending

Performance Diagnostics tests are available upon user request or a pre-selected daily, weekly, monthly, or yearly schedule without user intervention for HART instruments. Performance Diagnostics are continually running in Foundation Fieldbus Instruments and do not need to be initiated by ValveLink software.



Performance Diagnostics provide on-line/in-service predictive diagnostics to identify faults and list possible causes and recommended corrective actions for each fault

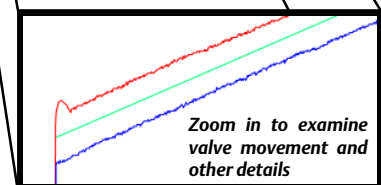
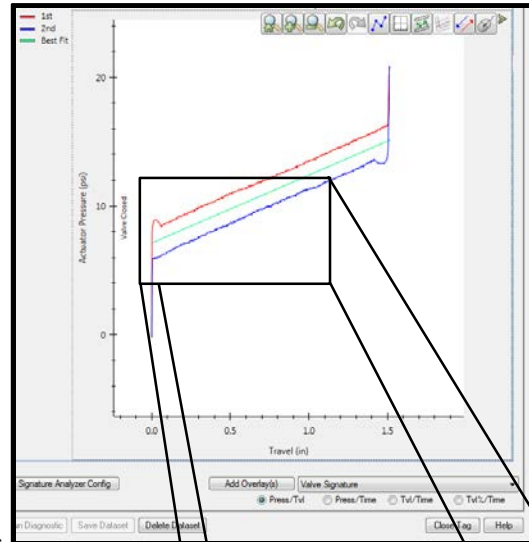
Provide validation of assembly rebuild and detailed insight into the physical condition of the valve/actuator assembly

Performance Diagnostics monitor the digital valve controller set point and plot valve operation to provide insight into the dynamic performance of the valve/actuator assembly. Out-of-service diagnostics such as valve signature, dynamic error band, and step response assist in the identification of emerging valve problems quickly and accurately.

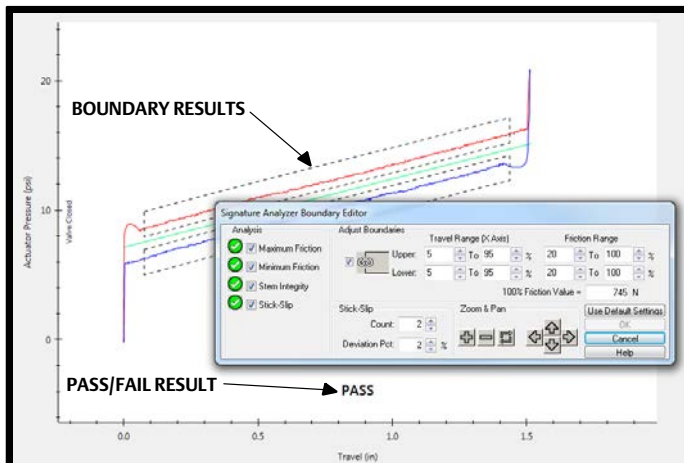
Use out-of-service diagnostics to prioritize and plan maintenance activities when the process is shut down.

The **Valve Signature** diagnostic is used to:

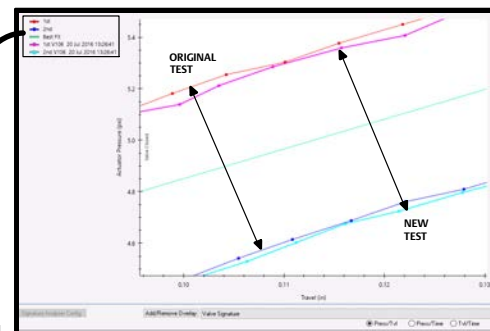
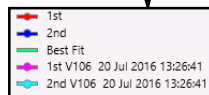
- Evaluate valve friction, deadband, and shutoff capability.
- Calculate actuator spring rate and bench set.
- Identify potential packing problems.
- Compare current condition to previous baseline condition.
- Signature Analyzer enables rapid analysis of the Valve Signature to more efficiently manage your plant assets. Based on default or user defined settings, Signature Analyzer provides pass/fail results for Maximum Friction, Minimum Friction, Stem Integrity, and Stick Slip, enabling better documentation for required maintenance or validation of valve repairs.



Diagnostic tests, such as the Valve Signature Diagnostic example shown here, help you detect emerging valve repair requirements before they impact performance



Signature Analyzer Boundary Editor allows you to use default or customized test criteria



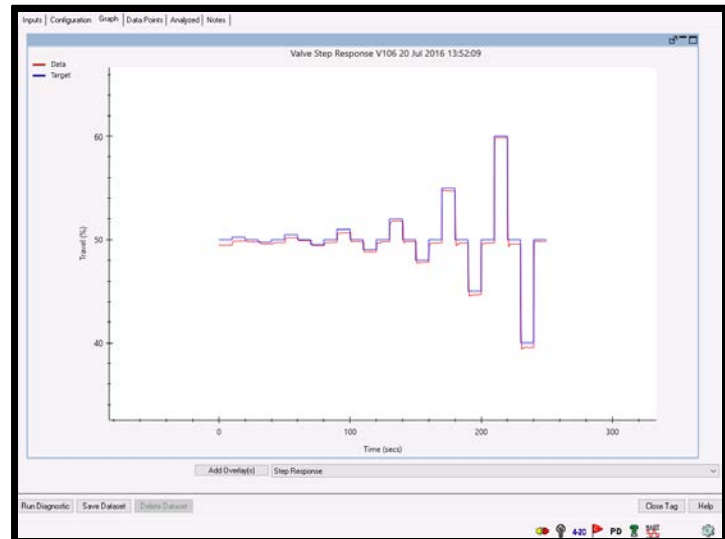
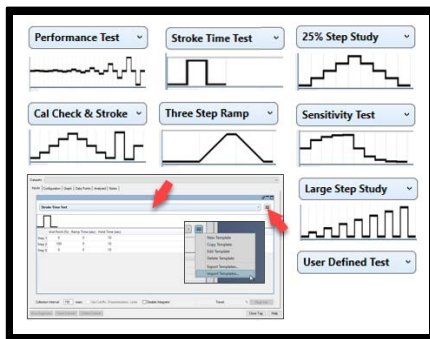
ValveLink software enables simultaneous multiple overlay of tests (up to ten). This allows you to trend valve history.

The **Dynamic Error Band** diagnostic is used to analyze hysteresis, deadband, and dynamic error.

The **Step Response** diagnostic allows you to evaluate how well the valve tracks an input change. By minimizing dead time, deadband, and overshoot, process control is greatly enhanced. With the Step Response test you can:

- Validate tuning parameters.
- Obtain a numerical analysis for overshoot, hysteresis, dead time, t63, and t86.
- Define up to 30 steps.

Select pre-configured Step Tests to evaluate valve performance or create and save custom tests.

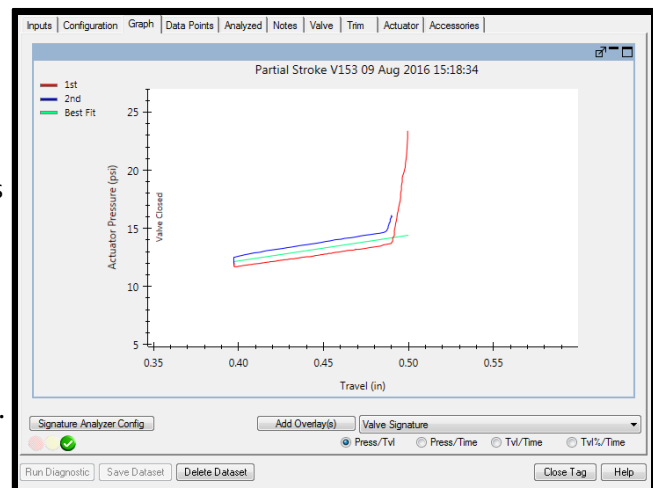


Use Step Response tests to verify instrument tuning and valve response to signal changes

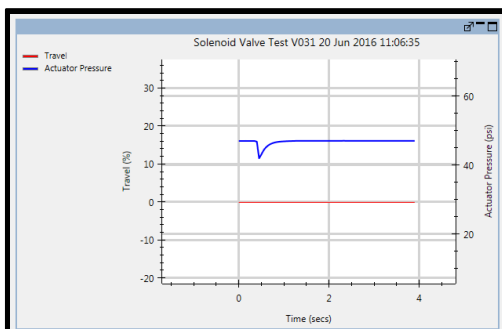
Setup and test FIELDVUE instruments for Safety Instrumented System (SIS) Solutions

Use ValveLink software to set up and test the final control element in safety instrumented system applications. ValveLink software for DVC6200 SIS digital valve controllers provides:

- A Setup Wizard to set up the digital valve controller for use in a Safety Instrumented System.
- The capability to initiate a partial stroke test of the final control element without requiring a process shutdown. You can run a partial stroke test to prove the valve will respond on demand.



At the same time the instrument performs the partial stroke test, ValveLink software also gathers diagnostic data. Use this data to evaluate valve performance and determine if maintenance is required.



- ValveLink software enables the **Solenoid Valve Test** for SIS instruments. This is to verify that a solenoid used in conjunction with a DVC6200 SIS digital valve controller is operational.

Each PST will be scored as Red/Yellow/Green based on a user selection of acceptance (Abort or Abnormal) criteria and result criticality. This result will be shown as an indicator bulb on the graph and in the analyzed section as PST Result.

- Signature Analyzer that automates diagnostics results of Valve Signature and Partial Stroke diagnostic data. The Signature Analyzer uses a set of user configurable limits to help determine possible issues with the valve assembly, such as a broken shaft or stem.

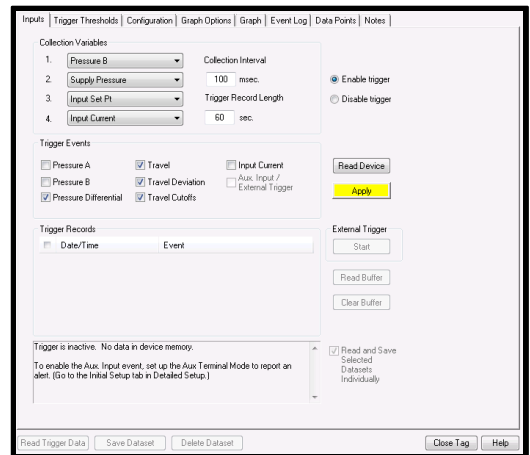
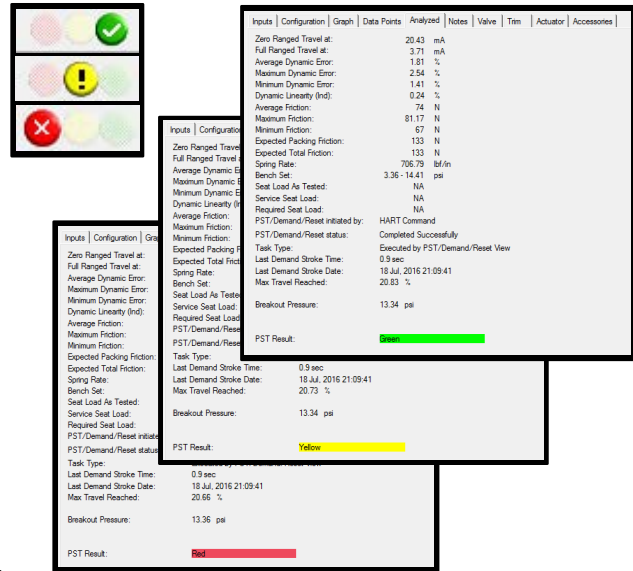
- A Trigger event that allows you to log the “Safety Demand” event and reset valve stroke while storing pre-event and post-event data for additional valve diagnostics. Trip event data can also be accessed for an audit and presented to regulatory insurance authorities.

The Trigger functionality allows data to be collected and stored in the instrument. Trip event data can be accessed for an audit and presented as required. The trigger will initiate on-board data collection based on a change in actuator pressure, valve travel, input current, pressure differential, travel deviation, or travel cutoff. The data is retained in the event of a power loss.

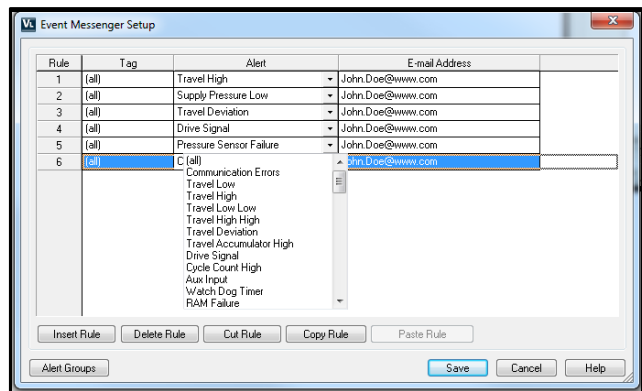
Every event performed with ValveLink software is logged with a time and date stamp to document that tests were run and how the valve assembly responded.

- Diagnostic information to allow predictive maintenance of the final control element. No need to unnecessarily shutdown the process to perform maintenance on the safety shutdown valve.
- The capability to monitor the health of a solenoid valve downstream of the digital valve controller. This can improve safety reliability and provide assurance that the solenoid valve is not stuck in the open position.

- ValveLink Solo Event Messenger capability to send notification via email, pager, or cell phone if a specific alert, or set of alerts, occurs on a predefined set of safety shutdown valves.

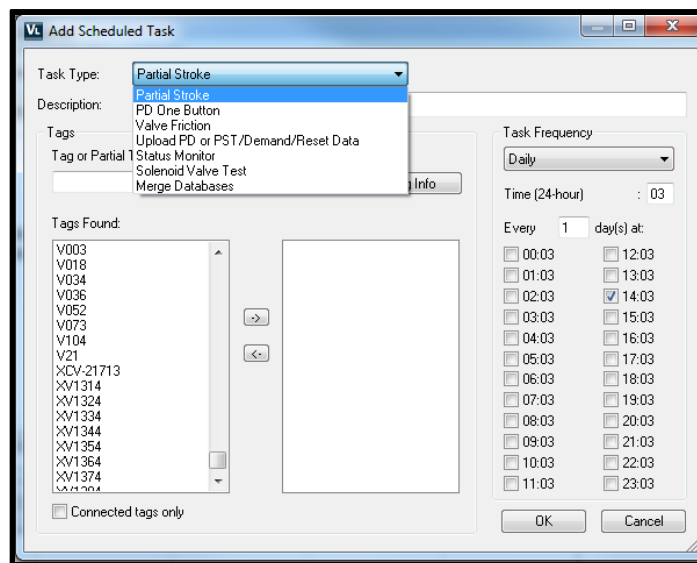


A Trigger event, based on one of eight process variables, documents a “Safety Demand” event when used in a safety instrumented system

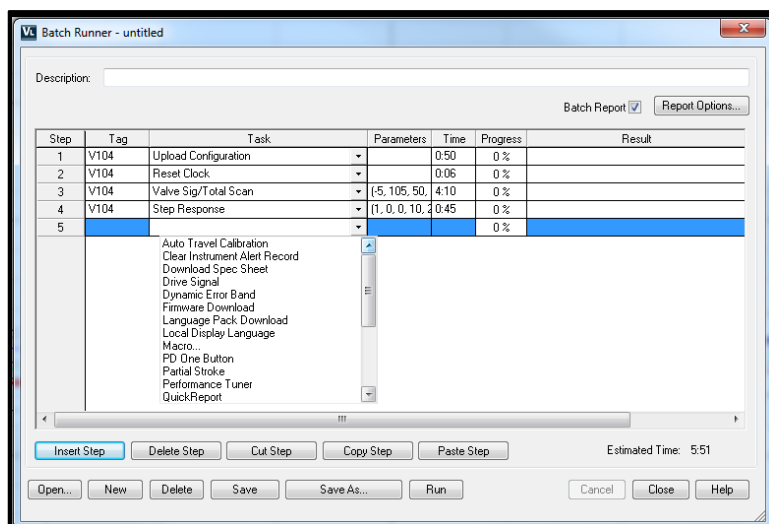


Scheduler allows you to specify a time and date to automatically run tasks on a regular basis

With Scheduler, you can schedule tasks, such as in-service Performance Diagnostics and SIS Partial Stroke diagnostics to run on a recurring daily, weekly, monthly, or yearly schedule that you specify. A summary of the outcome of scheduled tasks is available from within Scheduler and for complete details you can view the resulting diagnostic graphs and analyses.



Ability to preconfigure calibration and diagnostics in the workshop with Batch Runner or setup your own “Macro”



With Batch Runner you can setup ValveLink software to automatically run diagnostic tests, calibrate, or upload configuration data from multiple valves with a user specified routine. During a turnaround or production change, you can download firmware, upload configurations, run the Performance Tuner to optimize tuning, or even reset the instrument clock without any interaction by personnel.

Batch Runner increases efficiency by allowing you to set up a batch once, and repeatedly run that set of actions on different groups of valve assemblies.

Use Batch Runner to automate diagnostic tests and other repetitive activities

Time saving Concurrent Batch Runner to run Signature test, Step-Response test, or Auto-Calibration on multiple valves at the same time

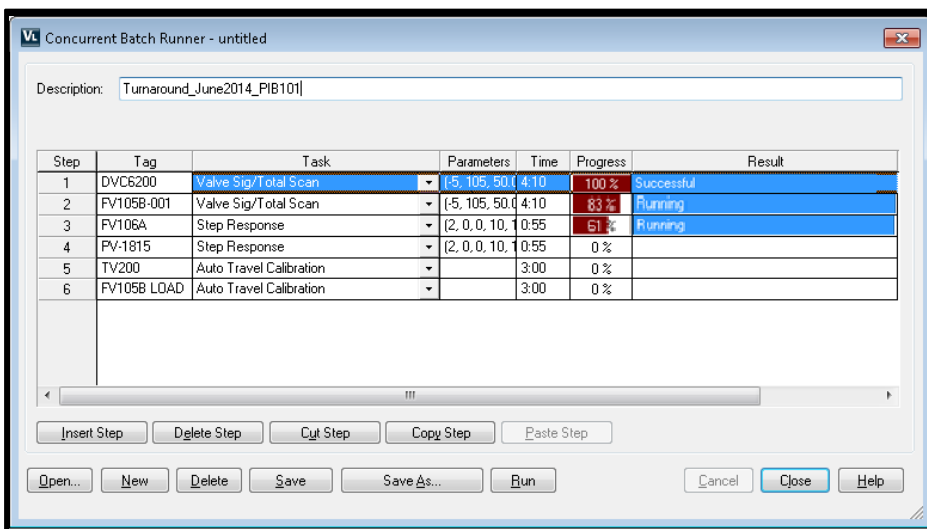
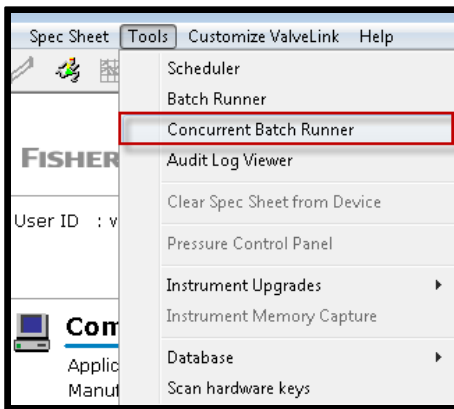
In addition to the Batch Runner, ValveLink software includes the time-saving Concurrent Batch Runner capability. This allows executing a diagnostic test or Auto-Calibration on multiple valves at the same time. The diagnostic results from the tested valves can be collected at the completion of the concurrent batch or at a later time after the tags have been put back “In-Service”.

The Concurrent Batch Runner is a 2-part process:

1. Executes diagnostic or calibration on multiple valves simultaneously, then,
2. the follow up batch uploads the diagnostic results in ValveLink software either during current outage or once valves are back “In-Service”.

Key benefits

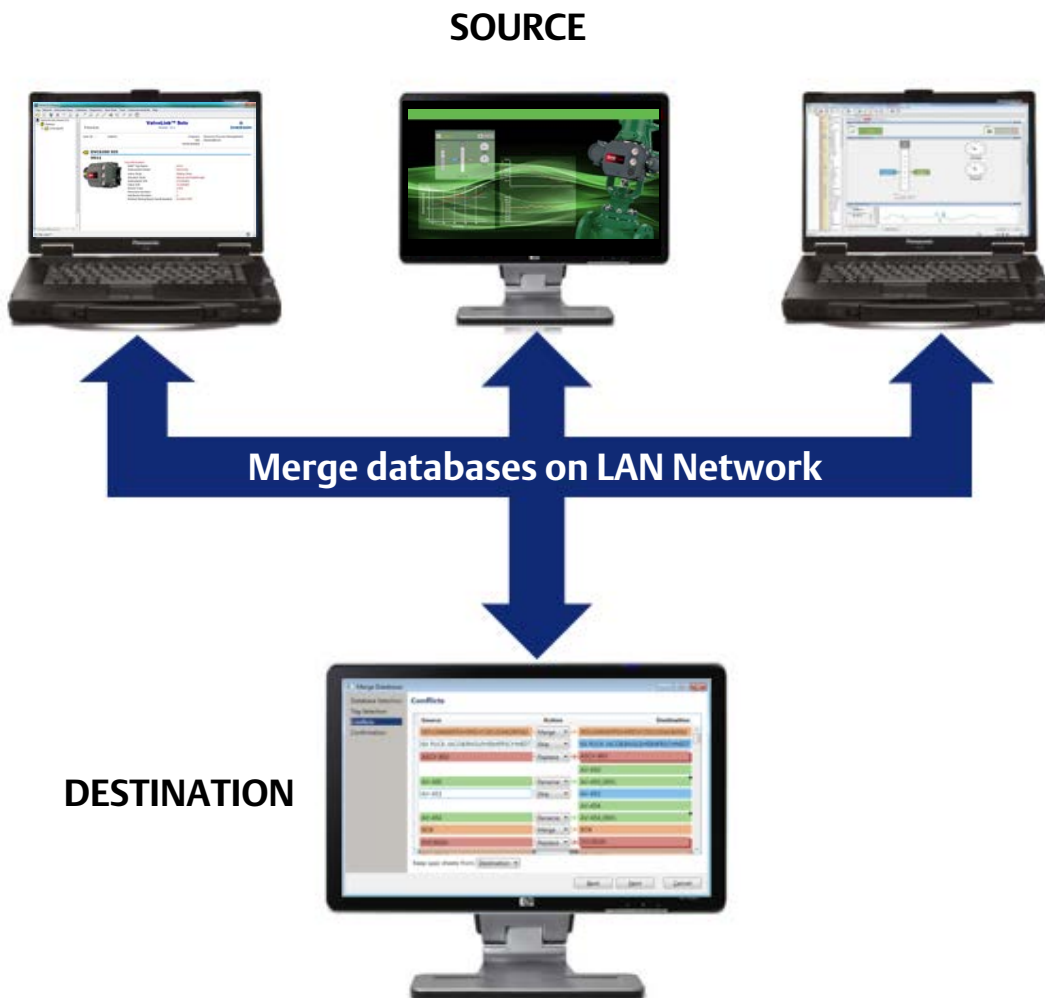
- Further increase process uptime and improve productivity with up to 80% time saving when running Concurrent Batch over a Batch Runner for similar tasks.
- Run up to three tasks in Concurrent Batch for one tag with the DVC6200 FW7 device only.
- Diagnostics are stored in the instrument after the concurrent batch is executed, allowing for data retrieval immediately after completion of the test or at a later time when valve is In-Service.
- Available with all configurations of the ValveLink software suite (ValveLink SOLO, ValveLink SNAP-ON, ValveLink DTM and ValveLink PLUG-IN for PRM).
- Supported on DVC6200, DVC6200f, DVC6000, and DVC6000f instruments.
- Fits into the proactive maintenance strategy of monitoring and diagnosing problems and correcting root cause sooner by gathering maximum data in a minimum amount of time.



Merge Database feature provides ability to automate multiple ValveLink software databases and tags into single or multiple stations

Available with ValveLink SOLO, ValveLink DTM and ValveLink PLUG-IN for PRM.

Manually or automatically, using scheduler feature, merge multiple ValveLink software databases to a single or multiple stations, helping to eliminate diagnostic data silos on individual stations.



ValveLink Express—free version of ValveLink software license designed to setup, calibrate, verify, and configure alerts on FIELDVUE instruments

ValveLink Express license is available for ValveLink SOLO, ValveLink DTM, and ValveLink PLUG-IN for PRM.

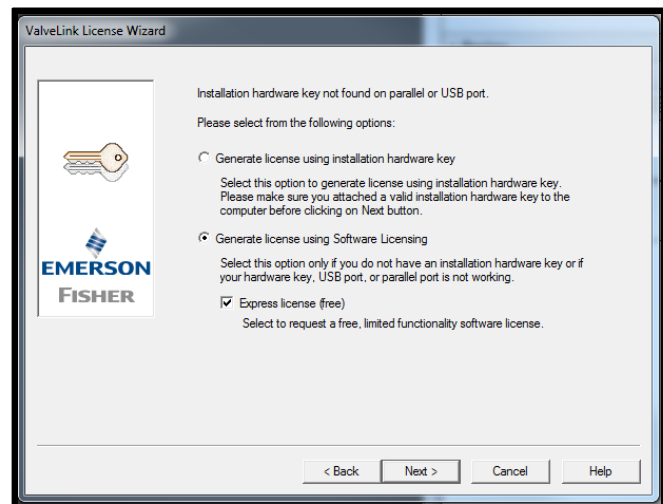
After the 60 days of full functionality temporary license available with each installation, the express license can be enabled by running the ValveLink License Wizard and requesting a New License using software licensing (Express).

ValveLink Express is designed primarily to allow you to perform key tasks such as setup, calibration, and alert configuration and to set the instrument In-Service.

The Express license can be upgraded to a full functionality license to add diagnostic capabilities at anytime. Contact your [Emerson sales office](#) for further information.

ValveLink Express provides:

- Users and Security Group setup
- Instrument specification sheet update
- Setup, Calibration (Auto, Manual, Partial Stroke and Hardware)
- Dashboard overview, Multi-Tag status, Status Monitoring and Alert monitoring
- Instrument Detailed Setup (parameter modification)
- Instrument Firmware upgrades
- Stroke valve for verification
- Monitor Instrument Alert Event Record
- Allow HART, Fieldbus and Multiplexer capabilities
- Network Alert Scan capabilities
- Trending



Specifications

Hardware Requirements

Computer and processor:

1 gigahertz (GHz) processor

Memory:

1 gigabyte (GB) RAM

Hard disk:

No Trending - 65 MB available storage space

Trending - 125 MB available storage space

Drive:

CD-ROM Drive

Note: Installation files are available from your

[Emerson sales office](#)

Display:

1024 X 768 resolution

I/O (ValveLink Solo):

USB Port required for instrument level step-ups

HART communications require at least one of the following interfaces:

HART Modem - Standard RS-232 Port
(requires dedicated interrupt)

HART Multiplexer - Standard RS-232 Port
(requires RS-485 converter)

MACTek VIATOR USB HART Modem - USB Port

MACTek VIATOR Bluetooth HART Interface -
Windows Bluetooth Serial Port Profile (SPP)

Modbus communications require the following:

Standard RS-232 Port

Additional HART Interface (see above)

FOUNDATION Fieldbus communications require at least one of the following:

National Instruments Fieldbus H1 interfaces

NI USB-8486

PCI-FBUS/2 and above

PCMCIA-FBUS/2 Series 2 and above

Emerson USB Fieldbus Interface (v3.0)

(not supported on Windows 11 or Server 2022 OS)

NI-FBUS Configuration - 2 Port Card

The following settings are applicable for configuration of a NI-FBUS 2 Port Card:

a) If only one port will be connected to a LIVE

segment, the other port must be set to "LAS" (not "Bus Monitor")

b) If both ports will be connected to LIVE segments, then both ports must be set to "Basic" mode.

NI driver software must be installed BEFORE installing the NI hardware.

Other configurations may result in initialization failure of the NI Communication Manager software

Supported Languages

ValveLink Software v13.7 is only available in English

Supported Operating Systems

ValveLink Solo

Windows® Server 2012 Essential (64 bit)

Windows Server 2012 Datacenter (64 bit)

Windows Server 2012 R2 Essential (64 bit)

Windows Server 2012 R2 Datacenter (64 bit)

Windows 10 Professional (64 bit)

Windows 10 Enterprise (64 bit)

Windows 10 IoT Enterprise (64 bit)

Windows Server 2016 Standard (64 bit)

Windows Server 2016 Datacenter (64 bit)

Windows Server 2016 LTSC (64 bit)

Windows Server 2019 Standard (64 bit)

Windows Server 2019 Datacenter (64 bit)

Windows 11 Professional (64 bit)

Windows 11 Enterprise (64 bit)

Windows Server 2022 Standard (64 bit)

Windows Server 2022 Datacenter (64 bit)

ValveLink SNAP-ON for AMS Device Manager

Supported AMS Device Manager Versions:

14.0 (Bundle 12), 14.1.1 (Bundle 9), 14.5 (Bundle 3),

14.5 FP1

Verify compatible Windows OS with appropriate AMS Device Manager installation guide

ValveLink PLUG-IN for PRM

Supported Yokogawa Plant Resource Manager (PRM) versions: 4.05 or newer

Verify compatible Windows OS with appropriate Yokogawa PRM General Specification Document

Software Requirements

Internet Explorer 6.0 or later

Microsoft Windows Installer 3.1 or later

(3.5 recommended; required by Microsoft .NET Framework)

Table 1. ValveLink Software Capability

CAPABILITY	PRODUCT TYPE						
	ValveLink Solo		ValveLink SNAP-ON	ValveLink DTM	ValveLink PLUG-IN for PRM	ValveLink Mobile	ValveLink Express ⁽⁸⁾
	VLDATA_UNLM Database Only	VLSOLO-XXXX ⁽¹⁾		VLDTM-XXXX ⁽¹⁾	VLPRM-XXXX ⁽¹⁾	VLMOBILE-1 ⁽⁴⁾	
HART Modem		●	● ⁽²⁾				●
HART Multiplexer		●	● ⁽²⁾				●
WirelessHART® Communications			● ⁽²⁾				
FOUNDATION Fieldbus PC Card		●					●
FOUNDATION USB Interface		●	●				●
Performance Diagnostics	Valve Signature ⁽³⁾	○	●	●	●	●	●
	Dynamic Error Band ⁽³⁾	○	●	●	●	●	●
	Drive Signal Test ⁽³⁾	○	●	●	●	●	●
	Step Response ⁽³⁾	○	●	●	●	●	●
	Step Response Analysis	○	●	●	●	●	●
	Performance Step Test ⁽³⁾	○	●	●	●	●	●
	Graph Overlay	○	●	●	●	●	
	Stroke Valve		●	●	●	●	●
	I/P & Relay Integrity	○	●	●	●	●	● ⁽⁷⁾
	Travel Deviation	○	●	●	●	●	● ⁽⁷⁾
	Supply Pressure ⁽⁴⁾	○	●	●	●	●	● ⁽⁷⁾
	Relay Adjustment ⁽⁴⁾	○	●	●	●	●	● ⁽⁷⁾
	Air Mass Flow ⁽⁴⁾	○	●	●	●	●	● ⁽⁷⁾
	PD One Button	○	●	●	●	●	● ⁽⁷⁾
	Valve Friction/Deadband Estimation	○	●	●	●	●	
	Valve Friction/ Deadband Trend	○	●	●	●	●	
	Profiler	○	●	●	●	●	●
	Triggered Profile	○	●	●	●	●	
Status Monitor	○	●	●	●	●	●	●
Network Scan ⁽⁵⁾		●					●
Trending ⁽⁵⁾	○	●					●
Event Messenger ⁽⁵⁾		●					●
Modbus ⁽⁵⁾		●					
Batch Runner		●	●	● ⁽⁶⁾	●		
Scheduler		●	●	● ⁽⁶⁾	●		
Merge Database	●	●		●	●		
Export Tag Data	●	●	●	●	●	●	●
Firmware Download ⁽⁴⁾		●	●	●	● ⁽⁵⁾		●
Temporary Tiering ⁽⁴⁾		●	●	●	●	●	
Instrument Level StepUp		●	●	●	●		●
Initial Tag Limit	Unlimited	5	25	5	5	Unlimited	Unlimited
Max Tag Limit	Unlimited	Unlimited	--- ⁽²⁾	Unlimited	Unlimited	Unlimited	Unlimited

● Indicates capability available
○ Indicates diagnostics can be reviewed but not run
1. XXXX indicates tag count.
2. AMS based capability. ValveLink SNAP-ON does not control or limit this functionality.
3. Diagnostic can only be run when the instrument is out of service.
4. DVC6200, DVC6200f, DVC6000, DVC6000f, and DVC2000 only.
5. HART only.
6. Limited to Host FDT Frame connected devices.
7. Only available through PD One Button.
8. Applies to SOLO/DTM/PRM

Neither Emerson, Emerson Automation Solutions, nor any of their affiliated entities assumes responsibility for the selection, use or maintenance of any product. Responsibility for proper selection, use, and maintenance of any product remains solely with the purchaser and end user.

Fisher, FIELDVUE, ValveLink, SNAP-ON, DeltaV, Ovation, and PROVOX are marks owned by one of the companies in the Emerson Automation Solutions business unit of Emerson Electric Co. Emerson Automation Solutions, Emerson, and the Emerson logo are trademarks and service marks of Emerson Electric Co. HART and *Wireless*HART are registered trademarks of FieldComm Group. FOUNDATION Fieldbus is a trademark of FieldComm Group. Microsoft, Windows, Windows Server, and Windows Vista are registered trademarks of Microsoft Corporation in the United States and other countries. All other marks are the property of their respective owners.

The contents of this publication are presented for informational purposes only, and while every effort has been made to ensure their accuracy, they are not to be construed as warranties or guarantees, express or implied, regarding the products or services described herein or their use or applicability. All sales are governed by our terms and conditions, which are available upon request. We reserve the right to modify or improve the designs or specifications of such products at any time without notice.

Emerson Automation Solutions
Marshalltown, Iowa 50158 USA
Sorocaba, 18087 Brazil
Cernay, France 68700
Dubai, United Arab Emirates
Singapore 128461 Singapore

www.Fisher.com

