

DeltaV™ Alarm Operations

- Alarm system security, reliability, and performance are built into the system
- Enables compliance with alarm standards ISA-18.2 and EEMUA-191
- Advanced alarming options available to increase operator effectiveness responding to alarms and improve operator situational awareness during alarm floods



DeltaV Alarm Operations capabilities help operators respond to alarms efficiently and correctly to minimize risks to safety, health, and the environment.

Introduction

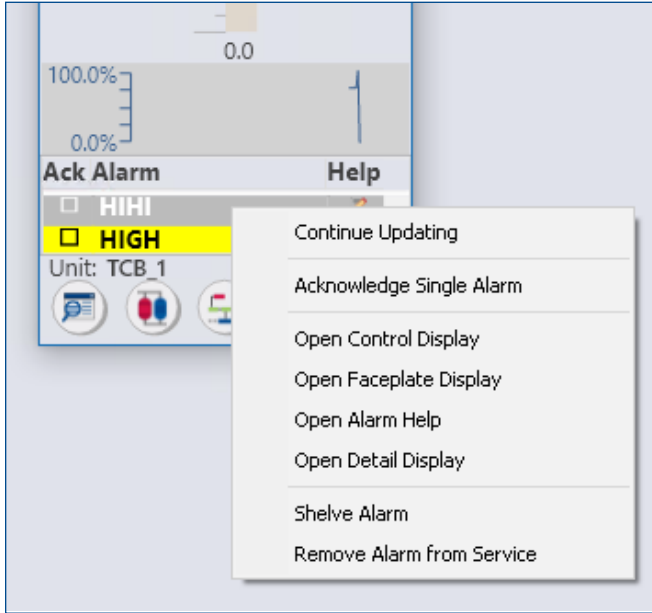
The DeltaV system provides a rich set of standard alarm operations capabilities to make operating, maintaining, and auditing alarms easy and efficient.

Two advanced alarming options, Alarm Help and Alarm Mosaic, are available to increase operator effectiveness when responding to alarms. Alarm Help provides fast one-click access to previously recorded alarm response instructions from alarm lists and detail displays, and a way for senior operators to add or modify the information. Alarm Mosaic provides a dynamic visualization of current active alarms for a highly comprehensible view of alarm floods.

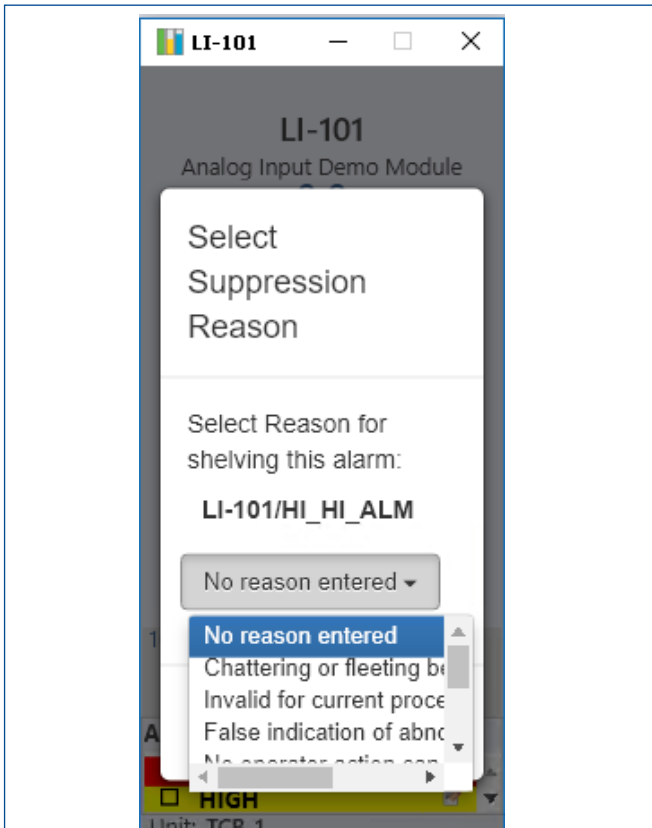
Standard Alarm Processing

The DeltaV system provides a solid foundation for implementing an effective alarm management program that conforms to ISA-18.2 – Management of Alarm Systems for the Process Industries and EEMUA-191 Alarm Systems – A Guide to Design, Management and Procurement. This foundation includes the following core capabilities built into the DeltaV system.

- **System Alarm Management.** A system engineering tool that provides easy access to the properties of multiple alarms, allowing efficient editing and exporting in XML file format.
- **Alarm Banner.** The most important alarms appear in a banner line at the bottom of each control display providing constant prominent visibility.
- **Conditional Alarming.** Standard alarms (e.g. HI) may be assigned on and off delay times, hysteresis, and a conditional enabling signal with enable delay, using native control modules function blocks.
- **Abnormal Condition Indication (v11 and greater).** Pre-engineered display dynamos identify a device's most important alarm, alert, or abnormal condition with iconic representation of abnormal conditions.
- **Dynamic Alarming Modules (v11 and greater).** Pre-engineered control module templates for alarm flood suppression and first-out multi-alarm suppression strategies, with faceplates and detail displays.
- **Alarm Sounds (v11 and greater).** Alarm horns provide audible distinction of three alarm priorities and two operator positions. Sounds to distinguish more priorities and console positions can be purchased.



Temporary operator suppression (shelving) is distinct from removing an alarm from service. User security keys control access to these functions.



Suppression reasons enable precise classification for alarm management activities. Choices may be user defined.

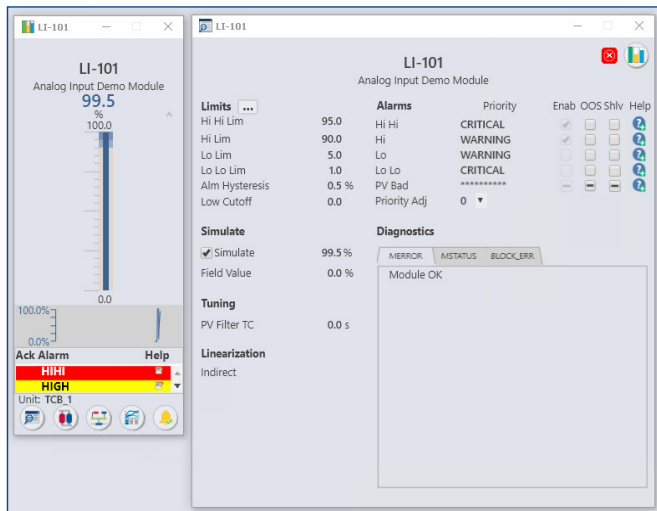
Module/Param	Description	Alarm	Help	Message
101/Hi_ALM	Analog Input Demo Module	HIGH		High Alarm

Alarm descriptions replace the module description for precise operator identification in alarm lists.

- Alarm Descriptions (v12 and greater).** Alarms may be given a unique description to supplement the default combination of module description and alarm type, for easier operator alarm identification.
- Alarm Audit Reports (v13 and greater).** Active alarm settings can be compared to settings in the system’s configuration database or exported to XML for comparisons to an external master alarm database. Reports can be created, viewed, run on-demand, or scheduled.
- Suppression Management (v13 and greater).** Temporary operator suppression (shelving) is distinguished from permanent suppression (removal-from-service) for maintenance or by logic. Reason for suppression may be selected by users or logic. Indication of shelving vs. removal-from-service and suppression reason are integrated into suppressed alarm lists, alarm audit reports, the event journal, and Alarm Help.
- Customizable Alarm and Alert Lists (v13 and greater).** Custom alarm and alert lists to match the needs of the operator or other specialized operations personnel are easily created with multiple available filters that include process area(s), priority range, origin (module, device, or system hardware), category (e.g. interlocks), and functional classification (e.g. product quality).

Alarm	Priority	Enabled	Invert	Limit Value	Suppression Reason	Suppression Timeout	Shelved	Out of Service
TITAN/CP/TCB/TCB_1/EPH_TCB_INLET/XY-181/BYPASS_ON	LOG	X				0002:00:00		
TITAN/CP/TCB/TCB_1/EPH_TCB_INLET/XY-181/FA1_ALM	WARNING	X				0002:00:00		
TITAN/CP/TCB/TCB_1/EPH_TCB_INLET/XY-181/TCB_ALM	ADVISORY	X				0002:00:00		
TITAN/CP/TCB/TCB_1/EPH_TCB_INLET/XY-181/NA_ALM	WARNING	X				0002:00:00		
TITAN/CP/TCB/TCB_1/EPH_TCB_INLET/XY-281/BYPASS_ON	LOG	X				0002:00:00		
TITAN/CP/TCB/TCB_1/EPH_TCB_INLET/XY-281/FA1_ALM	WARNING	X				0002:00:00		
TITAN/CP/TCB/TCB_1/EPH_TCB_INLET/XY-281/TCB_ALM	ADVISORY	X				0002:00:00		
TITAN/CP/TCB/TCB_1/EPH_TCB_INLET/XY-281/NA_ALM	WARNING	X				0002:00:00		
TITAN/CP/TCB/TCB_1/EPH_TCB_INLET/XY-381/BYPASS_ON	LOG	X				0002:00:00		
TITAN/CP/TCB/TCB_1/EPH_TCB_INLET/XY-381/FA1_ALM	WARNING	X				0002:00:00		
TITAN/CP/TCB/TCB_1/EPH_TCB_INLET/XY-381/TCB_ALM	ADVISORY	X				0002:00:00		
TITAN/CP/TCB/TCB_1/EPH_TCB_INLET/XY-381/NA_ALM	WARNING	X				0002:00:00		
TITAN/CP/TCB/TCB_1/EPH_TCB_OUTLET/XY-481/BYPASS_ON	LOG	X				0002:00:00		
TITAN/CP/TCB/TCB_1/EPH_TCB_OUTLET/XY-481/FA1_ALM	WARNING	X				0002:00:00		
TITAN/CP/TCB/TCB_1/EPH_TCB_OUTLET/XY-481/TCB_ALM	ADVISORY	X				0002:00:00		
TITAN/CP/TCB/TCB_1/EPH_TCB_OUTLET/XY-481/NA_ALM	WARNING	X				0002:00:00		
TITAN/CP/TCB/TCB_1/EPH_TCB_OUTLET/XY-482/BYPASS_ON	LOG	X				0002:00:00		
TITAN/CP/TCB/TCB_1/EPH_TCB_OUTLET/XY-482/FA1_ALM	WARNING	X				0002:00:00		
TITAN/CP/TCB/TCB_1/EPH_TCB_OUTLET/XY-482/TCB_ALM	ADVISORY	X				0002:00:00		
TITAN/CP/TCB/TCB_1/EPH_TCB_OUTLET/XY-482/NA_ALM	WARNING	X				0002:00:00		
TITAN/CP/TCB/TCB_1/EPH_TCB_OUTLET/XY-483/BYPASS_ON	LOG	X				0002:00:00		
TITAN/CP/TCB/TCB_1/EPH_TCB_OUTLET/XY-483/FA1_ALM	WARNING	X				0002:00:00		
TITAN/CP/TCB/TCB_1/EPH_TCB_OUTLET/XY-483/TCB_ALM	ADVISORY	X				0002:00:00		
TITAN/CP/TCB/TCB_1/EPH_TCB_OUTLET/XY-483/NA_ALM	WARNING	X				0002:00:00		
TITAN/CP/TCB/TCB_1/LI-181/Hi_HI_ALM	WARNING	X	08			0002:00:00		
TITAN/CP/TCB/TCB_1/LI-181/Hi_HI_ALM	CRITICAL	X	95	Chattering or fleeting behavior		0002:00:00	X	
TITAN/CP/TCB/TCB_1/TCB	LOG	X				00:00:00		
TITAN/CP/TCB/TCB_1/TCB_AGE/FA1_ALM	WARNING	X				0002:00:00		

Differences between approved and actual alarm settings are easily identified with alarm audit reports.



Alarm Help is available to operators with one mouse click.

Advanced Alarming Options

Alarm Mosaic and Alarm Help are licensed optional features for DeltaV Operator workstations.

Alarm Help (v11 and greater)

From any active or suppressed alarm list, the operator can access Alarm Help with a single mouse-click to view pre-supplied alarm response instructions to understand the alarm and respond effectively.

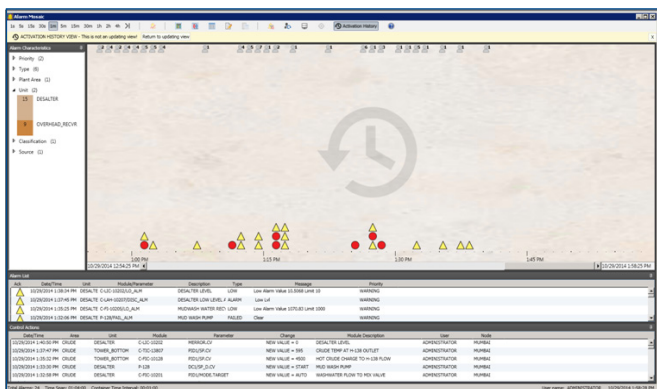
Operators with expert knowledge can be empowered to add or modify Alarm Help directly in the DeltaV Operate environment, which supports an operations-led-approach to alarm rationalization.

Alarm Mosaic (v12 and greater)

Alarm Mosaic minimizes the risk that operators will respond slowly or incorrectly during an alarm flood, through a graphical alternative to the classic alarm list that reduces stress, helps maintain situational awareness, and aids in root cause identification.

Operators can view a large number of alarms at once, unlike the classic alarm list where the number of alarms visible at a time is limited by the number of visible rows.

Operators can quickly and easily evaluate shared alarm characteristics such as alarm type or assigned primary display. Shared characteristics can help identify the common root cause for an alarm flood.



Alarm Mosaic helps operators better comprehend alarm floods and respond more effectively.

Ordering Information

Description	Model Number
Alarm Help	See Alarm Help product datasheet
Alarm Mosaic	See Alarm Mosaic product datasheet

Application Notes

- All illustrations and product descriptions in this datasheet are based on the DeltaV v14 system release. Some alarm processing capabilities are available in prior releases as indicated in parentheses, but may not possess all the features of a later release.
- Refer to the Alarm Help and Alarm Mosaic product data sheets for full descriptions of the features and specifications of these two advanced alarming options.
- Dynamic Alarming Modules are included in the out-of-the-box DeltaV v13.3.1 and greater Control Module library. Modules for previous releases back to v11 can be obtained by factory request.

Related Products

- **DeltaV Alarm Help.** A simple, flexible, and highly dependable solution to provide operators with in-context one-click access to alarm instructions.
- **DeltaV Alarm Mosaic.** Presents hundreds of alarms in an easy-to-comprehend view to help operators better manage alarm floods and simplify alarm history review during shift transitions.
- **DeltaV Analyze.** Configuration-free analysis of DeltaV system alarms and event with web page viewing and an alarm statistics report based on EEMUA-191, IEC 62682, and ISA-18.2 performance indicators.

©2023, Emerson. All rights reserved.

The Emerson logo is a trademark and service mark of Emerson Electric Co. The DeltaV logo is a mark of one of the Emerson family of companies. All other marks are the property of their respective owners.

The contents of this publication are presented for informational purposes only, and while diligent efforts were made to ensure their accuracy, they are not to be construed as warranties or guarantees, express or implied, regarding the products or services described herein or their use or applicability. All sales are governed by our terms and conditions, which are available on request. We reserve the right to modify or improve the designs or specifications of our products at any time without notice.

Contact us

www.emerson.com/deltav