

Emerson Plantweb Insight™

Asset View Application



- Visualization and analytics software platform providing strategic interpretation and monitoring of plant assets
- Relevant-time actionable information and insights about abnormal situations, asset status, and asset health
- Seamless system integration, simple installation, and minimal configuration or set-up not dependent on host system or historian
- Human-centered design and user-tested interface for consistent and intuitive navigation

Features and benefits

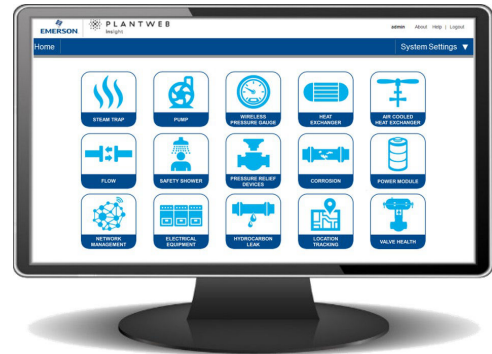
Gain real-time insights into abnormal situations

- Suite of asset monitoring applications identifying abnormal situations and failures using data analytics and models.
- Learn about issues before they impact the bottom line with alerting and failure identification.
- The intuitive and easy-to-read views highlight high priority, actionable information.



Lightweight, secure, and reliable software package allows seamless integration into current infrastructure

- Easily deployed via a virtual machine or edge device
- Access the interface anytime from multiple web browsers.
- Human-centered design considerations allow for quick and intuitive startup and configuration.
- Integrate with existing wireless or wired ecosystem to expand capabilities and leverage current investment.
- Not dependent on DCS, host system, or historian.



Contents

Features and benefits.....	2
User interface.....	4
Asset View application.....	5
Communication specifications.....	6
Ordering information.....	7
Specifications.....	9

Monitor one asset or thousands with a fully scalable software package and numerous applications

- This app allows users to create templates to monitor key assets such as compressors, chillers, towers, tanks and many more.
- Start small with a few key assets or monitor all your assets in one spot.
- Integration with other business systems such as data historians is supported through several protocol options.
- Deploy in small, large, or enterprise-wide operations.

User interface

Every application in the Plantweb Insight suite has a similar look and feel for a consistent user experience. The main views can be broken into three layers.

Dashboard

The dashboard page is an umbrella overview of the asset class being monitored. This page will provide an aggregated view of the entire asset class and the most important insights. These insights will vary from application to application with examples including asset status, asset health, energy costs, emissions loss, critical alerts, etc. A brief trending of these key insights is also provided for historical tracking and trending.

Asset summary

The asset summary page is a tabular view of all assets being monitored. This view provides a similar perspective as the dashboard but on an asset-by-asset basis. This page is fully sortable, searchable, and filterable for quick prioritization and identification. The asset summary page can also be exported via CSV or Excel[®] for reporting.

Asset details

The asset details page provides specific asset details. These details include location, process, application, asset, and device details for each individual asset. It also provides calculated insights such as relevant-time status, health, energy, emissions, additional information, and a brief asset history. A notes section allows users to add notes and flag assets for follow-up.

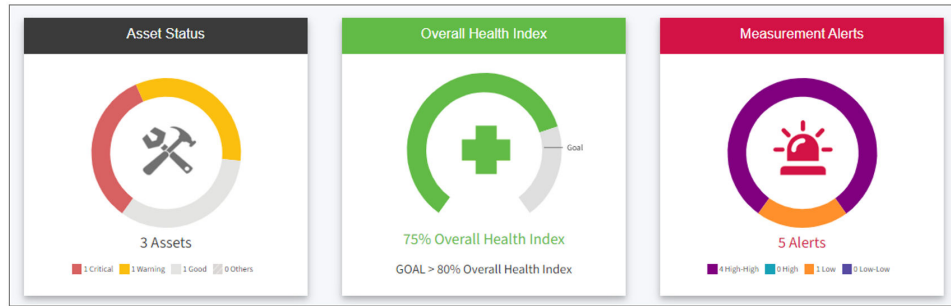
Alerts/Events

The alerts or events page provides a tabular view of all alerts across all assets being monitored. This view provides a chronological log of all alerts or events, past or present, up to 5000 alerts total. This page is fully sortable, searchable, and filterable for quick prioritization and identification. The alerts/events page can also be exported via CSV or Excel for reporting.

Settings

The settings page is used to configure application-wide settings such as units, currency, KPIs, and alert weights. The settings page is also used to configure email notifications and asset templates.

Asset View application



Features

- In-depth monitoring of any plant asset through supported data inputs
- Assign up to 10 measurement variables per individual asset.
- Provides relevant real-time asset status, health score, and alerts (High-High, High, Low, Low-Low).
- Asset trend charts provide a view of variable trends over time.
- Asset templates allow for quick configuration of common asset types.
- Alert weights enable prioritization of asset maintenance.

Communication specifications

Inputs

- HART-IP™ client** Plantweb Insight acts as a HART-IP client for subscribing to and polling information from HART-IP sources such as Emerson 1410S Gateways.
- OPC UA® client** Plantweb Insight contains an OPC UA client for accessing measurement data from OPC UA servers. OPC UA data inputs are enabled in numerous applications.

Outputs

- Modbus® TCP server** Plantweb Insight contains a Modbus TCP server. Asset statuses and alerts can be sent to Modbus TCP clients.
- OPC UA Server** Plantweb Insight contains an OPC UA server. Asset status and alerts can be sent to OPC UA clients.

Ordering information

Ordering process

1. Build and order your license code.
2. Download your Plantweb Insight™ application and platform software from MyEmerson if you have not already done so.
3. Upon installation of an application onto the platform, the software will instruct you how to request a license key.
4. A license key will be generated upon request based on your purchased license code.

Note

License duration starts at the time the license key is generated.

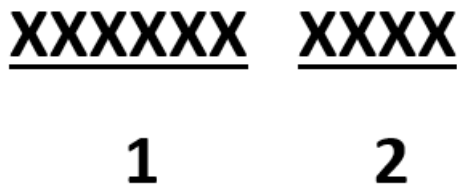
License key

Plantweb Insight applications require a valid license key to use. License keys are delivered upon placing an order for a license code and submitting a locking ID from the software. Plantweb Insight license keys are provided as a file.

License code

The license code is a configured model that contains the order details required to generate a license key. This code itself is not your license key to activate your software. Exact license order codes will vary; an example of a typical license code format is shown in [Figure 1](#).

Figure 1: License Code Example Format



- A. *Required license code component (7002AV base code)*
- B. *License type (subscription duration and maximum number of assets to be monitored)*
 - *1 asset can have up to 10 individual measurements.*
 - *Trial licenses are limited to the smallest asset capacity (requires new or existing infrastructure)*

Sample License Code

7002AV C100

Emerson Plantweb Insight Asset View application license ordering information

License application

Code	Description
7002AV	Plantweb Insight Asset View application

License duration and assets

Code	Description
T001	90-Day Trial for up to 10 assets (100 measurements)
A010	1-Year License for up to 10 Assets (100 measurements)
A025	1-Year License for up to 25 Assets (250 measurements)
A050	1-Year License for up to 50 Assets (500 measurements)
A100	1-Year License for up to 100 Assets (1000 measurements)
A999	1-Year License for Customer Number of Assets per site
B010	2-Year License for up to 10 Assets (100 measurements)
B025	2-Year License for up to 25 Assets (250 measurements)
B050	2-Year License for up to 50 Assets (500 measurements)
B100	2-Year License for up to 100 Assets (1000 measurements)
B999	2-Year License for Customer Number of Assets per site
C010	3-Year License for up to 10 Assets (100 measurements)
C025	3-Year License for up to 25 Assets (250 measurements)
C050	3-Year License for up to 50 Assets (500 measurements)
C100	3-Year License for up to 100 Assets (1000 measurements)
C999	3-Year License for Customer Number of Assets per site

Specifications

System requirements

Plantweb Insight is delivered as a fully developed virtual machine (e.g. .ova file) and applications are installed once the virtual machine is deployed.

On-Premise Host system

Virtualization software

- VMware Workstation Pro™ 15 or higher (requirements can be found [here](#))

OR

- VMware vSphere® 6.5 or higher (requirements can be found [here](#))

OR

- Microsoft® Hyper-V Configuration version 8.0 or higher (requirements can be found [here](#))

Hardware requirements (minimum)

- Processors = 4 dedicated cores⁽¹⁾
- Memory = 8 GB RAM
- Hard drive = 512 GB of free space

Hardware requirements (recommended)

- Processors = 8 dedicated cores
- Memory = 16 GB RAM

Cloud environment capability

- Plantweb Insight has the ability to be hosted in the cloud on an Emerson Microsoft Azure instance.

Web client

Browsers (recent versions supported)

- Google Chrome™
- Microsoft Edge

(1) Most PC operating systems (i.e. Windows, Linux, Mac) will use one to two cores.

For more information: [Emerson.com/global](https://emerson.com/global)

©2024 Emerson. All rights reserved.

Emerson Terms and Conditions of Sale are available upon request. The Emerson logo is a trademark and service mark of Emerson Electric Co. Rosemount is a mark of one of the Emerson family of companies. All other marks are the property of their respective owners.