

# Handheld Communicator Interface

- Retain up-to-date records of installed field devices
- Improve productivity
- Increase field device maintenance effectiveness



*Synchronize field device information between your 475 Field Communicator and AMS Device Manager.*

## Introduction

The Handheld Communicator Interface option enables you to synchronize device configuration information between your AMS Device Manager database and a 475 Field Communicator.

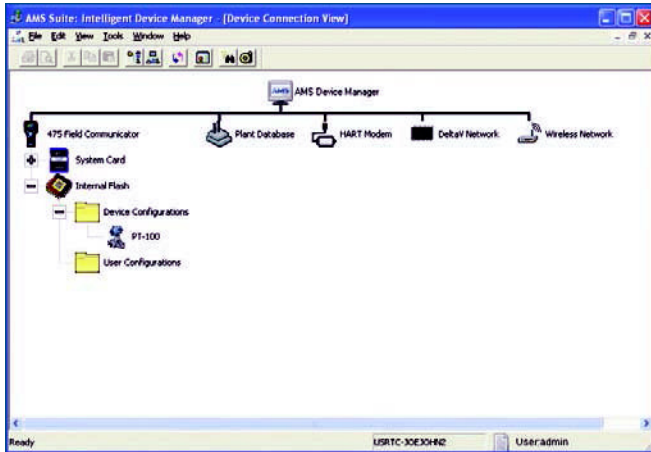
With the Handheld Communicator Interface option, you can take advantage of all of the features of AMS Device Manager – including a drag-and-drop transfer of configurations between AMS Device Manager and your handheld communicator.

## Benefits

**Retain up-to-date records of installed field devices.** With the ability to transfer device configurations between your 475 Field Communicator and AMS Device Manager, you gain control over your field device information. Accurate records of device configurations are invaluable in showing your compliance with regulatory requirements.

Information from your 475 Field Communicator can be stored in the AMS Device Manager database for easy access to field device information.

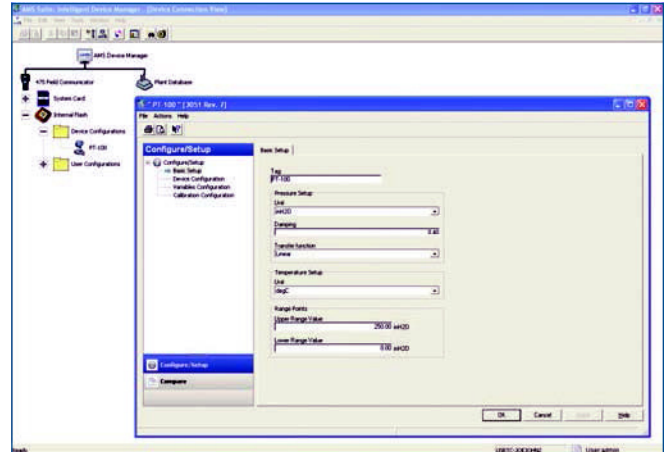
**Improve productivity with easy drag-and-drop transfer of field device information.** Using Bluetooth technology, quickly connect your 475 Field Communicator to a PC to transfer information or connect via an IrDA port. Configuration changes done in AMS Device Manager are downloaded by dragging and dropping the configurations onto the communicator icon on the screen. Then you are ready to go to the field to download new configurations to the field devices. You can also store up to 1,000 configurations on the 475 Field Communicator and transfer them to your AMS Device Manager system.



The Handheld Communicator Interface brings the field to the office.

With a complete field device database available, maintenance scheduling becomes faster and easier. Configuration changes can be prepared in advance, so that maintenance activities can be done more effectively and proactively.

**Increase maintenance effectiveness by reconciling information to your asset database.** Once a configuration change has been made to a field device, the change can be uploaded to AMS Device Manager. You can review the changes to the device configuration and store them to the database. An Audit Trail record of the field change is automatically created.



Update your AMS Device Manager database to maintain records of field device configurations.

### Specifications

The 475 Field Communicator uses Bluetooth or IrDA communication to connect to a PC. If your PC does not include an IR port, an IrDA to USB adapter can be purchased separately (Part # 00375-0015-0002).

For more information on the 475 Field Communicator, go to [www.fieldcommunicator.com](http://www.fieldcommunicator.com) or contact your local Emerson sales representative.

©2017, Emerson. All rights reserved.

The Emerson logo is a trademark and service mark of Emerson Electric Co. AMS is a mark of one of the Emerson group of companies. All other marks are the property of their respective owners.

The contents of this publication are presented for informational purposes only, and while every effort has been made to ensure their accuracy, they are not to be construed as warranties or guarantees, express or implied, regarding the products or services described herein or their use or applicability. All sales are governed by our terms and conditions, which are available on request. We reserve the right to modify or improve the designs or specifications of our products at any time without notice.

**Emerson**  
**Reliability Solutions**  
12001 Technology Drive  
Eden Prairie, MN 55344 USA  
[www.emerson.com/ams](http://www.emerson.com/ams)