

MODEL NO.

TVF-M20GNPM

PRODUCT LINE

Valvetop Discrete Valve Controller

SPECIFICATIONS

Model Valvetop Model TVF, epoxy-coated A360
Aluminum base, clear resin lid

Bus Sensor (2) Mech SPDT (10A@250VAC)

Area Classification Class I, Div.1, Groups A,B,C&D;
Class II, Div.1, Groups E,F,G;
Ex ia IIC T4, Ex ia IIC T4 Gb,
IP67, 4, 4x

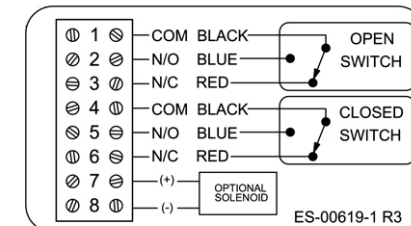
Visual Display 90° Green Open / Red Closed

Shaft NAMUR, 304 Stainless Steel

Conduit Entrie (2) 1/2" NPT

O-Rings Silicone

Temperature Rating -30 °C to 40 °C



TOPWORX

TopWorx, Inc.
3300 Fern Valley Rd.
Louisville, KY 40213

(502) 969-8000 ph.
(502) 969-5911 fax
www.topworx.com