

MODEL NO.

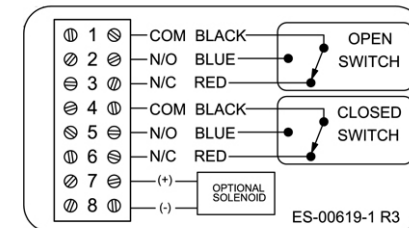
TVF-M2WGLMM

PRODUCT LINE

Valvetop Discrete Valve Controller

SPECIFICATIONS

| | |
|----------------------------|--|
| Model | Valvetop Model TVF, epoxy-coated A360 Aluminum enclosure |
| Bus Sensor | (2) Mech SPDT (10A@250VAC) |
| Area Classification | No approvals Nema 4, 4x IP68 |
| Visual Display | 90° Green Open / Red Closed |
| Shaft | 1" extended shaft w/NAMUR tip, 304 Stainless Steel |
| Conduit Entries | (2) M20 |
| O-Rings | Silicone |
| Temperature Rating | -50 °C to 80 °C |



Current as of Jul 31, 2013 - subject to change without notice.

TOPWORX

TopWorx, Inc. (502) 969-8000 ph.
 3300 Fern Valley Rd. (502) 969-5911 fax
 Louisville, KY 40213 www.topworx.com