

MODEL NO.

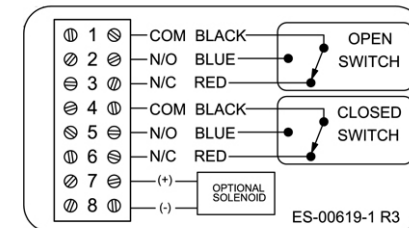
**TVF-M2WGNEM**

PRODUCT LINE

**Valvetop Discrete Valve Controller**

SPECIFICATIONS

**Model** Valvetop Model TVF, epoxy-coated A360  
 Aluminum enclosure  
**Bus Sensor** (2) Mech SPDT (10A@250VAC)  
**Area Classification** No approvals Nema 4, 4x IP68  
**Visual Display** 90° Green Open / Red Closed  
**Shaft** NAMUR, 304 Stainless Steel  
**Conduit Entries** (2) 3/4" NPT  
**O-Rings** Silicone  
**Temperature Rating** -50 °C to 80 °C



Current as of Jul 31, 2013 - subject to change without notice.

**TOPWORX**

TopWorx, Inc. (502) 969-8000 ph.  
 3300 Fern Valley Rd. (502) 969-5911 fax  
 Louisville, KY 40213 www.topworx.com