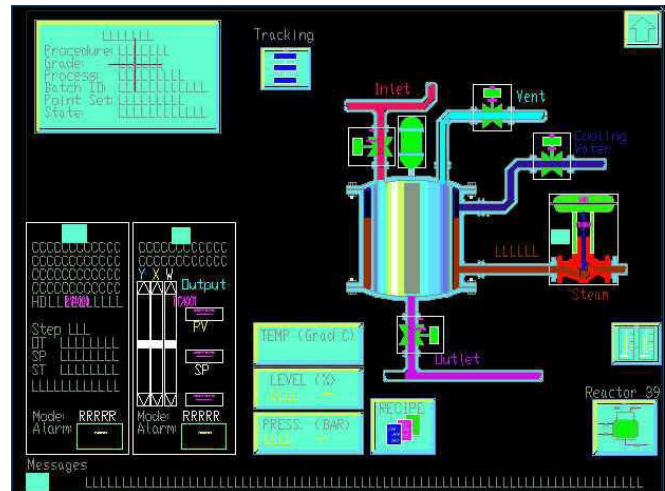


PROVOX™ to DeltaV™ Display Transition Services

- Transitions PROVOX™ displays to DeltaV™ displays
- Improves operator interface—takes full advantage of new display technologies
- Establishes a plant graphics standard and graphics library
- Employs the services of expert engineers experienced with both PROVOX and DeltaV systems
- Reduces the time, effort, and risks associated with manual display builds



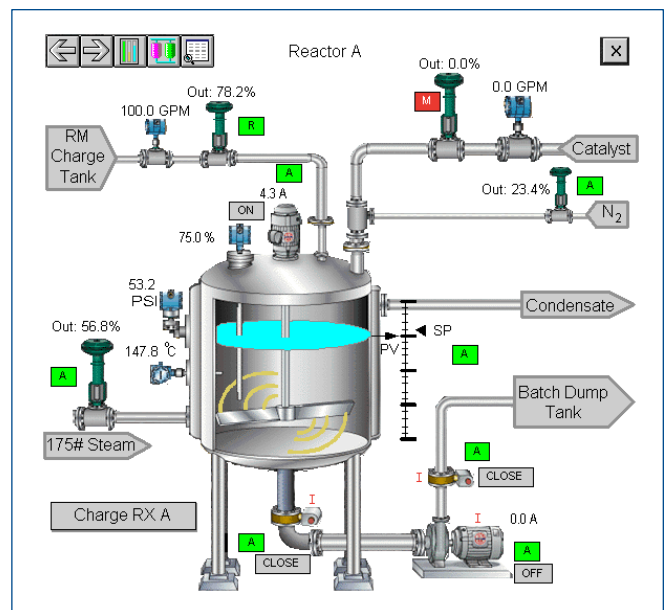
PROVOX™ Display (Before)

Introduction

Emerson offers Design and Comprehensive level display transition services to meet a variety of transition needs.

The display transition design service is your best choice when migrating from PROVOX consoles and controllers to the DeltaV process automation system. Taking full advantage of new technologies, graphics standards and onboard DeltaV system capabilities, this service delivers the optimal operator interface for your plant.

In the design service, the Emerson team works with your process and graphics personnel to develop a graphics standard, incorporating the new display technology along with your plant operating procedures and philosophies. Using this new graphics standard and elements from the DeltaV libraries, the team develops your graphics library. Then, they translate your existing PROVOX graphics into DeltaV operator interface graphics.



DeltaV™ Display (Design Service—After)

The display transition comprehensive service provides DeltaV displays that are functional equivalents of the original PROVOX displays. Combining the expertise of our engineering staff with the use of an automated conversion utility, the comprehensive service generates DeltaV operator interface displays with 100% of the original PROVOX display functionality. The service greatly reduces the time, effort and risk associated with converting your graphic displays.

The design and comprehensive services produce complete DeltaV displays, ready for checkout and use at the plant. For easy maintenance, they are 100% compatible with DeltaV Operate.

Benefits

Improved operator interface using DeltaV automation technology. The transition service takes advantage of the latest in DeltaV operator interface capabilities. Your operators will have a consistent, easy-to-understand, easy-to-use interface to help them run the plant more effectively.

Makes the most of expertise at Emerson. Emerson is staffed by engineers who know PROVOX and DeltaV systems extremely well and who use that expertise to get the most out of the DeltaV operator interface. They will work with you to create an operator interface that reinforces and supports your plant operating procedures.

Reduces the time and effort spent on building new displays. This keeps your people and their capabilities focused on more critical plant priorities.

Manages the pace of your technology investments by phasing the upgrades. Immediately deploy new DeltaV operator interface technologies that work with your existing controls, enabling you to plan future automation investments while enjoying the benefits of enhanced capabilities.

Service Description

Included in all transition services:

- **Expert project management** using certified and proven ISO-9000 methodology.
- **Transition** of PROVOX graphics to DeltaV Operate for PROVOX or DeltaV operator interface graphics.

Options

To enhance your transition project, consider the following service options:

- **Custom dynamic graphic element design.** For improved ease of maintenance of your DeltaV graphic displays, Emerson can develop customized 2D and 3D graphic elements and DeltaV dynamic objects to replace grouped objects.
- **Development of a plant graphic standard.** Documents and describes the symbols, guidelines, color schemes, gray scale, and other conventions that the team develops. It serves as a reference to ensure ongoing consistency as you expand and update the system.
- **Development of a plant graphics library.** Use elements from existing DeltaV libraries with your new graphic standard to generate graphic elements that can easily be reused.
- **Site Services.** At any time during the development of the displays, site visits may be advantageous. When the display transitions are completed, the displays should be checked out at the plant. Emerson, sales/service offices can supply personnel to assist with or lead this effort. All site work is priced on a time and materials basis.
- **Operator training.** Emerson offers comprehensive training for your entire staff, including engineering, safety, maintenance and operations personnel. Emerson's training formats—eLearning, traditional classroom, onsite and dynamic simulation-based training—apply "hands on and learn-by-doing" approaches to ensure that you achieve your training goals.

Contact your local Emerson office for more details about these options.

Summary

By having Emerson transition your PROVOX displays, you keep your own staff's valuable attention focused on site priorities. When migrating from a PROVOX or DeltaV Operate for PROVOX to DeltaV operator interface, the transition service takes full advantage of the new display capabilities and creates a graphic standard and library tailor-made to fit your plant and your operating procedures.

Migration to the DeltaV operator interface reduces the maintenance costs of your current operator interface, while laying a foundation for future technology investments.

Specifications

PROVOX to DeltaV Display Transition Service Specifications	
Inputs	<ol style="list-style-type: none"> Customer discussions and meetings, as well as existing plant standards and conventions concerning graphic displays. Current PROVOX or DeltaV Operate for PROVOX displays as a foundation for the new DeltaV operator displays.
Output	DeltaV display files on CD-ROM media
Output File Format	DeltaV version v7.x and later

Graphic Element Conversion Specifications

- Simple conditionals associated with these elements, such as color or visibility changes based on database values, are also converted.
- In some cases, the converted graphic element may have a slightly different look or feel, but it will provide an equivalent or better functionality.
- Seven digit maximum for combined whole number and decimal display for values.

Order Information

Description	Model Number
PROVOX-to-DeltaV Display Transition Services	Contact your local Emerson office

Prerequisites

- Request a services proposal from the Emerson Sales/Services organization.
- For PROVUE™ and OWP displays, provide the latest ENVOX™ system configuration (.pdx) on CD-ROM.
- For PROVOX Operator Consoles - POC (FIX32 format) or DeltaV Operate for PROVOX (FIX32/iFIX format) displays, provide the latest graphics on CD-ROM.
- Attend training on DeltaV configuration. This training will give you the skills and knowledge to complete any future editing processes.

Emerson

North America, Latin America:

+1 800 833 8314 or
+1 512 832 3774

Asia Pacific:

+65 6777 8211

Europe, Middle East:

+41 41 768 6111

www.emerson.com/deltav

©2021, Emerson. All rights reserved.

The Emerson logo is a trademark and service mark of Emerson Electric Co. The DeltaV logo is a mark of one of the Emerson family of companies. All other marks are the property of their respective owners.

The contents of this publication are presented for informational purposes only, and while every effort has been made to ensure their accuracy, they are not to be construed as warranties or guarantees, express or implied, regarding the products or services described herein or their use or applicability. All sales are governed by our terms and conditions, which are available on request. We reserve the right to modify or improve the designs or specifications of our products at any time without notice.