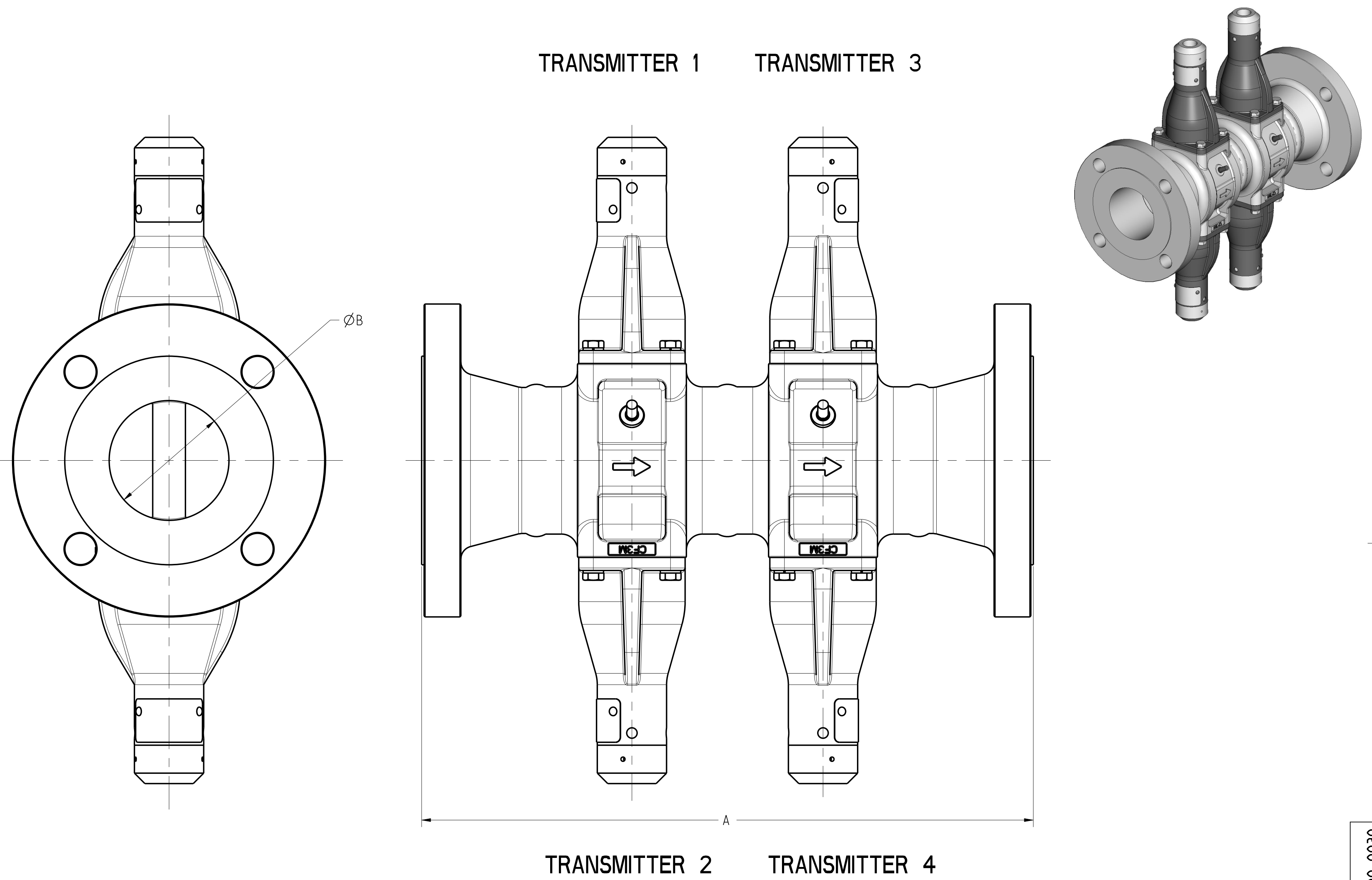


1	2	3	4	5	6	
NOMINAL SIZE	A ±.17 INCH (mm)	ASME RTJ A ±.17 INCH (mm)	B ±.03 INCH (mm)	C ±.20 INCH (mm)	D XMTR SPACING INCH (mm)	WEIGHT LB (kg)
2 IN METER DN 50	150	12.6 (320)	12.9 (328)	1.92 (48.8)	-	41 (18.6)
	300	13.1 (333)	13.6 (345)	1.92 (48.8)	-	45 (20.4)
	600	13.8 (351)	13.9 (353)	1.92 (48.8)	-	49 (22.2)
	900	16.1 (409)	16.2 (411)	1.92 (48.8)	-	78 (35.4)
	1500	15.6 (396)	15.7 (399)	1.67 (42.4)	-	82 (37.2)
	PN16	11.1 (282)	-	1.92 (48.8)	-	41 (18.6)
	PN40	11.3 (287)	-	1.92 (48.8)	-	42 (19.1)
	PN63	12.4 (315)	-	1.92 (48.8)	-	50 (22.7)
	PN100	12.9 (328)	-	1.92 (48.8)	-	55 (24.9)
	PN160	13.5 (343)	-	1.92 (48.8)	-	58 (26.3)
3 IN METER DN 80	JIS 10K	11.0 (279)	-	1.92 (48.8)	-	41 (18.6)
	JIS 20K	11.6 (295)	-	1.92 (48.8)	-	45 (20.4)
	JIS 40K	13.1 (333)	-	1.92 (48.8)	-	49 (22.2)
	150	14.3 (363)	14.7 (373)	2.87 (72.9)	-	60 (27.2)
	300	15.0 (381)	15.5 (394)	2.87 (72.9)	-	69 (31.3)
	600	15.8 (401)	15.9 (404)	2.87 (72.9)	-	76 (34.5)
	900	17.3 (439)	17.4 (442)	2.87 (72.9)	-	99 (44.9)
	1500	18.4 (467)	18.6 (472)	2.60 (66.0)	-	133 (60.3)
	PN16	12.7 (323)	-	2.87 (72.9)	-	56 (25.4)
	PN40	13.4 (340)	-	2.87 (72.9)	-	60 (27.2)
4 IN METER DN 100	PN63	14.5 (368)	-	2.87 (72.9)	-	69 (31.3)
	PN100	14.9 (378)	-	2.87 (72.9)	-	78 (35.4)
	PN160	15.6 (396)	-	2.87 (72.9)	-	83 (37.6)
	JIS 10K	12.3 (312)	-	2.87 (72.9)	-	60 (27.2)
	JIS 20K	13.7 (348)	-	2.87 (72.9)	-	69 (31.3)
	JIS 40K	15.4 (391)	-	2.87 (72.9)	-	69 (31.3)
	150	15.3 (389)	15.6 (396)	3.79 (96.3)	-	80 (36.3)
	300	16.0 (406)	16.5 (419)	3.79 (96.3)	-	100 (45.4)
	600	17.8 (452)	17.9 (455)	3.79 (96.3)	-	126 (57.2)
	900	18.8 (478)	18.9 (480)	3.79 (96.3)	-	149 (67.6)
FOR DISPLAY OPTION, ADD 0.8 LB (0.4 kg)	1500	20.0 (508)	20.1 (511)	3.40 (86.4)	-	199 (90.3)
	PN16	13.4 (340)	-	3.79 (96.3)	-	70 (31.8)
	PN40	14.4 (366)	-	3.79 (96.3)	-	79 (35.8)
	PN63	15.4 (391)	-	3.79 (96.3)	-	92 (41.7)
	PN100	16.3 (414)	-	3.79 (96.3)	-	109 (49.4)
	PN160	17.1 (434)	-	3.79 (96.3)	-	116 (52.6)
	JIS 10K	13.7 (348)	-	3.79 (96.3)	-	80 (36.3)
	JIS 20K	13.7 (348)	-	3.79 (96.3)	-	100 (45.4)
	JIS 40K	16.8 (427)	-	3.79 (96.3)	-	126 (57.2)

REVISION TABLE			
REVISION	ECO NO.	APP'D	DATE
AB	1144249	M.K.	5/21/20
DESCRIPTION			
UPDATE DIM & WEIGHT TABLES. ADD WELD-ENDS			



2-4 INCH FLANGED STYLE

- 4. 2, 3, & 4 INCH METERBODIES MUST HAVE REMOTE ELECTRONICS. INTEGRAL ELECTRONICS ARE NOT ALLOWED.
- 3. ROSEMOUNT CERTIFIES THESE DRAWINGS ARE IN ACCORDANCE WITH ROSEMOUNT ENGINEERING SPECIFICATIONS AND ACCURATELY REPRESENT THE EQUIPMENT FURNISHED.
- 2. REFERENCE INSTRUCTION MANUAL FOR DETAIL INSTALLATION INFORMATION AND WIRING CONNECTIONS.
- 1. DIMENSIONS ARE IN INCHES. DIMENSIONS SHOWN IN PARENTHESES ARE IN MILLIMETERS.

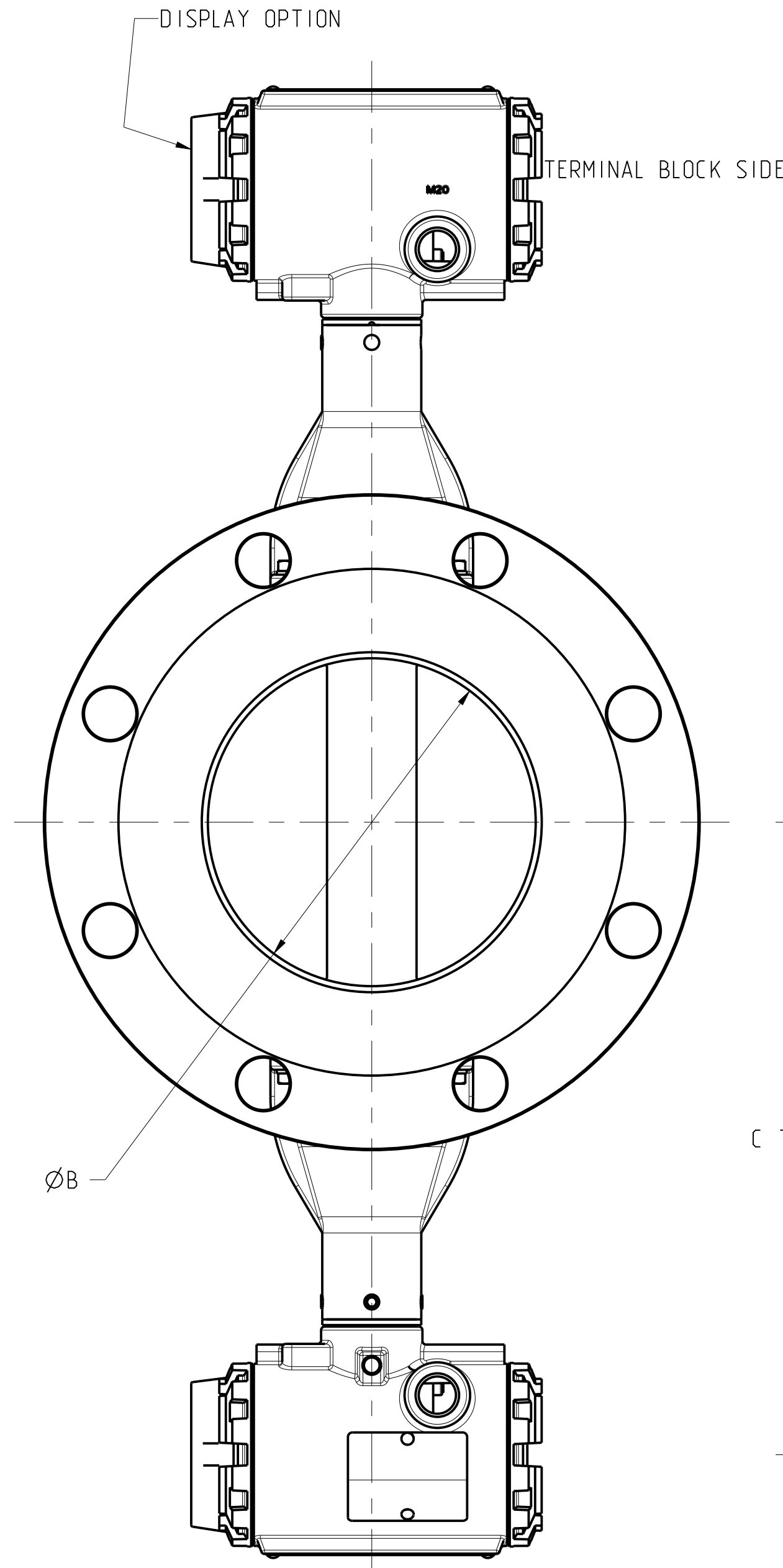
NOTES:

CONFIDENTIAL AND PROPRIETARY INFORMATION IS CONTAINED HEREIN AND MUST BE HANDLED ACCORDINGLY.	SURFACE FINISH UNLESS OTHERWISE SPECIFIED	3RD ANGLE	SIZE D	SCALE 3/5	REV AB
ROSEMOUNT					
TITLE INSTALLATION DRAWING					
8800 VORTEX QUAD FLOW METER					
UNLESS OTHERWISE SPECIFIED DIMENSIONS IN INCHES (mm). REMOVE ALL BURRS AND SHARP EDGES.		DR. JAMES LAGE 6/10/19 DRAWING NO. 08800-0030			
-DEC TOLERANCES- .X ± .1 (2.5) .XX ± .02 (0.5) .XXX ± .010 (0.25)		APP'D MARTIN K. 6/10/19			
FRACTIONS ± 1/32	ANGLES ± 2°	DO NOT SCALE PRINT CAD MAINTAINED, (PRO/E) PRODUCT CODE DOC TYPE SHEET 1 OF 6			

DRAWING NO. 08800-0030

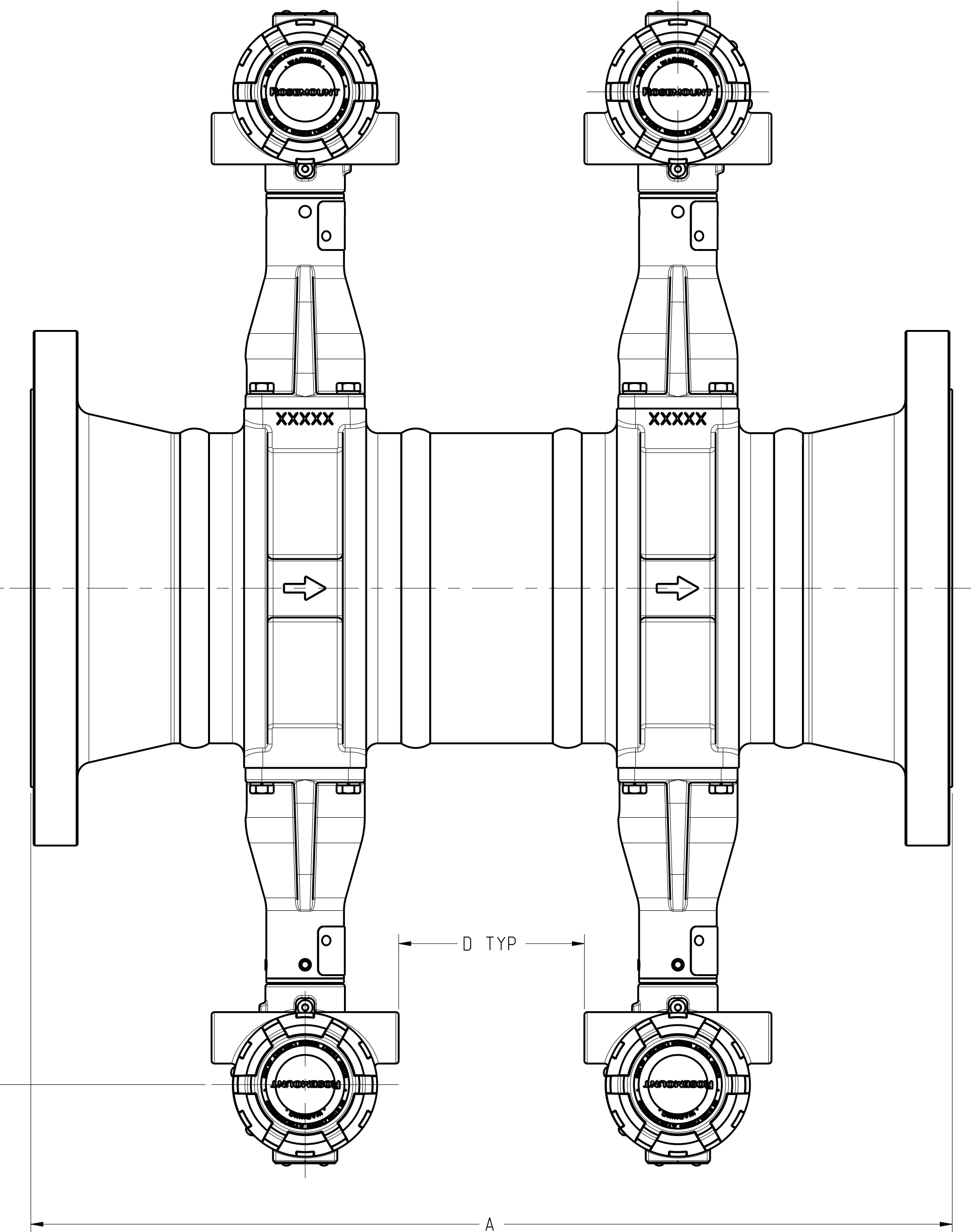
1	2	3	4	5	6	7	8	9	10	11	12	13	14	15	16
NOMINAL SIZE	A ±.17 INCH (mm)	ASME RTJ A ±.17 INCH (mm)	B ±.03 INCH (mm)	C ±.20 INCH (mm)	D XMTR SPACING INCH (mm)	WEIGHT LB (kg)									
6 IN METER DN 150	150	19.3 (490)	19.6 (498)	5.70 (144.8)	10.8 (274)	3.75 (95.3)	128 (58.1)								
	300	20.0 (508)	20.5 (521)	5.70 (144.8)	10.8 (274)	3.75 (95.3)	168 (76.2)								
	600	22.0 (559)	22.1 (561)	5.70 (144.8)	10.8 (274)	3.75 (95.3)	234 (106.1)								
	900	23.3 (592)	23.5 (597)	5.70 (144.8)	10.8 (274)	3.75 (95.3)	333 (151)								
	1500	25.8 (655)	26.1 (663)	5.14 (130.6)	10.8 (274)	3.38 (85.9)	432 (196)								
	PN16	16.6 (422)	-	5.70 (144.8)	10.8 (274)	3.75 (95.3)	114 (51.7)								
	PN40	18.2 (462)	-	5.70 (144.8)	10.8 (274)	3.75 (95.3)	134 (60.8)								
	PN63	19.7 (500)	-	5.70 (144.8)	10.8 (274)	3.75 (95.3)	178 (80.7)								
	PN100	21.3 (541)	-	5.70 (144.8)	10.8 (274)	3.75 (95.3)	208 (94.3)								
	PN160	21.9 (556)	-	5.14 (130.6)	10.8 (274)	3.38 (85.9)	270 (122.5)								
8 IN METER DN 200	JIS 10K	18.3 (465)	-	5.70 (144.8)	10.8 (274)	3.75 (95.3)	128 (58.1)								
	JIS 20K	18.3 (465)	-	5.70 (144.8)	10.8 (274)	3.75 (95.3)	168 (76.2)								
	JIS 40K	21.8 (554)	-	5.70 (144.8)	10.8 (274)	3.75 (95.3)	234 (106.1)								
	150	23.9 (607)	24.3 (617)	7.55 (191.8)	11.7 (297)	6.36 (161.5)	207 (93.9)								
	300	24.6 (625)	25.1 (638)	7.55 (191.8)	11.7 (297)	6.36 (161.5)	264 (119.7)								
	600	26.9 (683)	27.0 (686)	7.55 (191.8)	11.7 (297)	6.36 (161.5)	363 (164.7)								
	900	27.6 (701)	27.8 (706)	6.62 (168.1)	11.7 (297)	4.95 (125.7)	590 (267.6)								
	1500	31.6 (803)	32.0 (813)	6.62 (168.1)	11.7 (297)	4.95 (125.7)	763 (346.1)								
	PN10	20.8 (528)	-	7.55 (191.8)	11.7 (297)	6.36 (161.5)	177 (80.3)								
	PN16	20.8 (528)	-	7.55 (191.8)	11.7 (297)	6.36 (161.5)	176 (79.8)								
10 IN METER DN 250	PN25	22.2 (564)	-	7.55 (191.8)	11.7 (297)	6.36 (161.5)	205 (93)								
	PN40	22.8 (579)	-	7.55 (191.8)	11.7 (297)	6.36 (161.5)	223 (101.2)								
	PN63	24.5 (622)	-	7.55 (191.8)	11.7 (297)	6.36 (161.5)	284 (128.8)								
	PN100	26.1 (663)	-	7.55 (191.8)	11.7 (297)	6.36 (161.5)	350 (158.8)								
	PN160	25.4 (645)	-	6.62 (168.1)	11.7 (297)	4.95 (125.7)	491 (222.7)								
	JIS 10K	22.5 (572)	-	7.55 (191.8)	11.7 (297)	6.36 (161.5)	207 (93.9)								
	JIS 20K	22.5 (572)	-	7.55 (191.8)	11.7 (297)	6.36 (161.5)	264 (119.7)								
	JIS 40K	26.8 (681)	-	7.55 (191.8)	11.7 (297)	6.36 (161.5)	363 (164.7)								
	150	27.9 (709)	28.3 (719)	9.56 (242.8)	12.8 (325)	9.39 (238.5)	309 (140.2)								
	300	29.1 (739)	29.6 (752)	9.56 (242.8)	12.8 (325)	9.39 (238.5)	270 (122.5)								
12 IN METER DN 300	600	32.4 (823)	32.5 (826)	9.56 (242.8)	12.8 (325)	9.39 (238.5)	588 (266.7)								
	PN10	25.2 (640)	-	9.56 (242.8)	12.8 (325)	9.39 (238.5)	270 (122.5)								
	PN16	25.4 (645)	-	9.56 (242.8)	12.8 (325)	9.39 (238.5)	275 (124.7)								
	PN25	26.8 (681)	-	9.56 (242.8)	12.8 (325)	9.39 (238.5)	311 (141.1)								
	PN40	28.1 (714)	-	9.56 (242.8)	12.8 (325)	9.39 (238.5)	360 (163.3)								
	PN63	29.7 (754)	-	9.56 (242.8)	12.8 (325)	9.39 (238.5)	421 (191)								
	PN100	32.2 (818)	-	9.56 (242.8)	12.8 (325)	9.39 (238.5)	558 (253.1)								
	JIS 10K	27.9 (709)	-	9.56 (242.8)	12.8 (325)	9.39 (238.5)	309 (140.2)								
	JIS 20K	27.9 (709)	-	9.56 (242.8)	12.8 (325)	9.39 (238.5)	397 (180.1)								
	JIS 40K	31.4 (798)	-	9.56 (242.8)	12.8 (325)	9.39 (238.5)	588 (266.7)								
150	31.9 (810)	32.3 (820)	11.38 (289.1)	13.7 (348)	11.19 (284.2)	467 (211.8)									
300	33.1 (841)	33.6 (853)	11.38 (289.1)	13.7 (348)	11.19 (284.2)	585 (265.4)									
600	35.6 (904)	35.7 (907)	11.38 (289.1)	13.7 (348)	11.19 (284.2)	764 (346.5)									
PN10	28.2 (716)	-	11.38 (289.1)	13.7 (348)	11.19 (284.2)	377 (171)									
PN16	29.0 (737)	-	11.38 (289.1)	13.7 (348)	11.19 (284.2)	398 (180.5)									
PN25	30.1 (765)	-	11.38 (289.1)	13.7 (348)	11.19 (284.2)	443 (200.9)									
PN40	31.9 (810)	-	11.38 (289.1)	13.7 (348)	11.19 (284.2)	521 (236.3)									
PN63	33.9 (861)	-	11.38 (289.1)	13.7 (348)	11.19 (284.2)	604 (274)									
PN100	36.3 (922)	-	11.38 (289.1)	13.7 (348)	11.19 (284.2)	817 (370.6)									
JIS 10K	30.8 (782)	-	11.38 (289.1)	13.7 (348)	11.19 (284.2)	467 (211.8)									
JIS 20K	30.8 (782)	-	11.38 (289.1)	13.7 (348)	11.19 (284.2)	585 (265.4)									
JIS 40K	34.8 (884)	-	11.38 (289.1)	13.7 (348)	11.19 (284.2)	764 (346.5)									

FOR DISPLAY OPTION, ADD 0.8 LB (0.4 kg)



TRANSMITTER 2

TRANSMITTER 4



TRANSMITTER 1

TRANSMITTER 3

6-12 INCH FLANGED STYLE

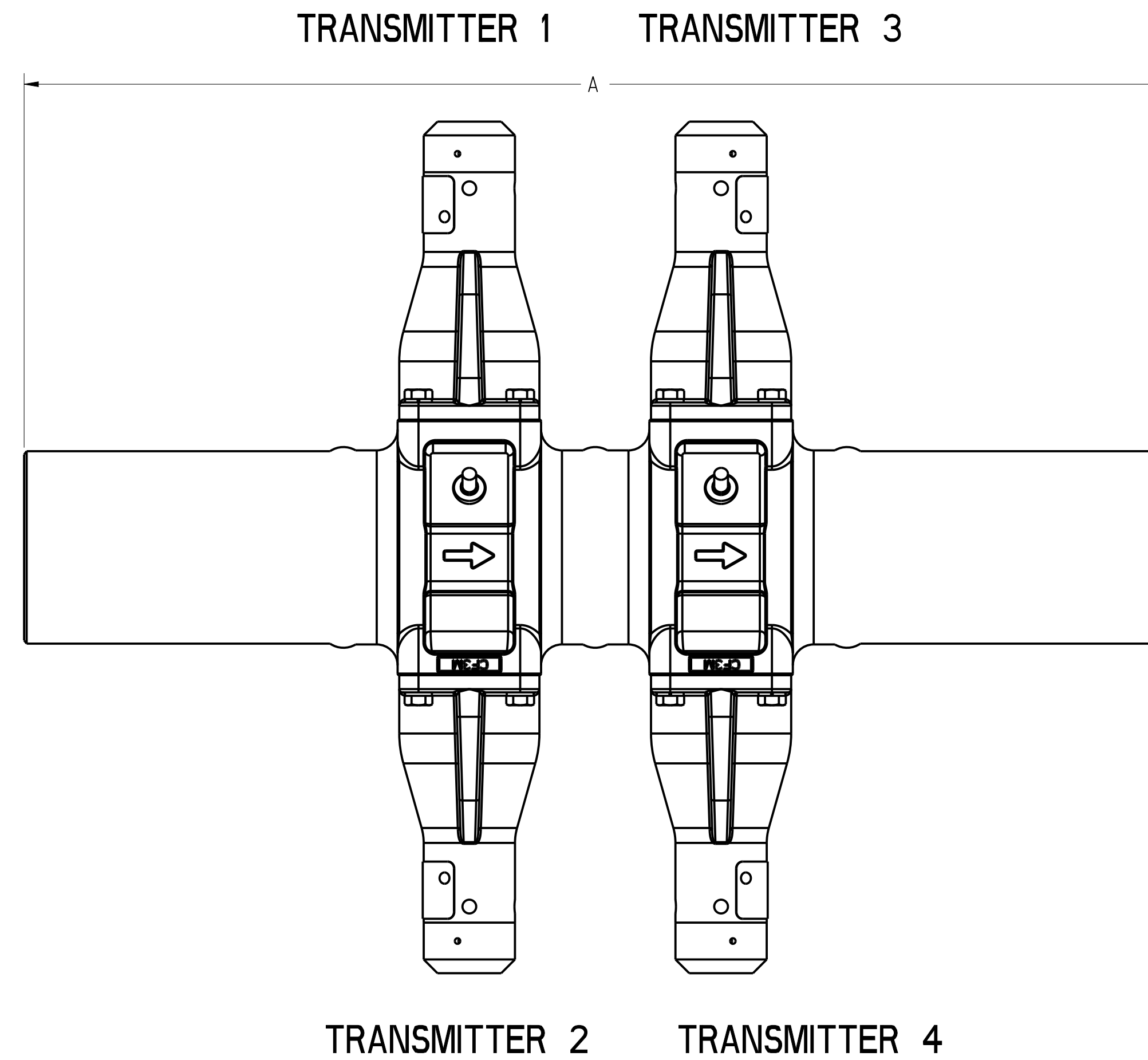
CONFIDENTIAL AND PROPRIETARY INFORMATION IS CONTAINED HEREIN AND MUST BE HANDLED ACCORDINGLY.	SURFACE FINISH UNLESS OTHERWISE SPECIFIED	3RD ANGLE	SIZE D	SCALE 3/5	REV AB
EMERSON					
ROSEMOUNT					
TITLE INSTALLATION DRAWING					
8800 VORTEX QUAD FLOW METER					
UNLESS OTHERWISE SPECIFIED DIMENSIONS IN INCHES (MM). REMOVE ALL BURRS AND SHARP EDGES.		-DEC TOLERANCES-		DRAWING NO. 08800-0030	
.X ± .1 (2.5)	.XX ± .02 (0.5)	.XXX ± .010 (0.25)	ANGLES ± 2°	DR. JAMES LAGE 6/10/19	APP'D MARTIN K. 6/10/19
FRACTIONS ± 1/32		DO NOT SCALE PRINT		CAD MAINTAINED, (PRO/E)	PRODUCT CODE
				DOC TYPE	SHEET 2 OF 6

DRAWING NO. 08800-0030

NOMINAL SIZE		A ±.17 INCH (mm)	WEIGHT LB (kg)
2 IN METER DN50	SCH 10S	19.3 (490)	31 (14.1)
	SCH 40S	19.3 (490)	32 (14.5)
	SCH 80S	19.3 (490)	34 (15.4)
	SCH 160	18.8 (478)	38 (17.2)
3 IN METER DN80	SCH 10S	20.4 (490)	41 (14.1)
	SCH 40S	20.4 (490)	44 (14.5)
	SCH 80S	20.4 (490)	47 (15.4)
	SCH 160	20.3 (478)	55 (17.2)
4 IN METER DN100	SCH 10S	21 (533)	52 (23.6)
	SCH 40S	21 (533)	57 (25.9)
	SCH 80S	21 (533)	62 (28.1)
	SCH 160	21.5 (546)	80 (36.3)

2-4 INCH WELD-END STYLE

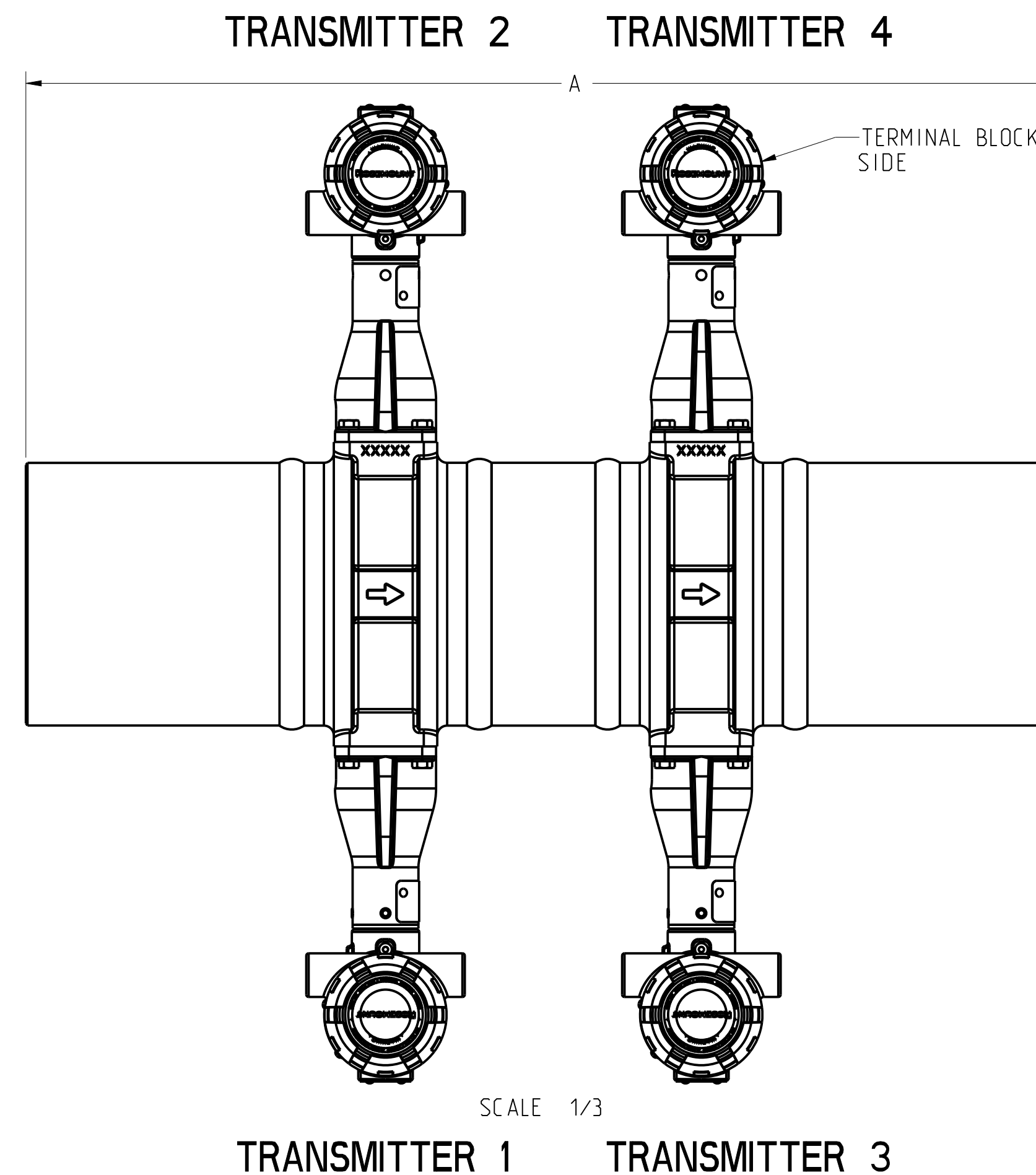
FOR DISPLAY OPTION, ADD 0.8 LB (0.4 kg)
REFER TO SHEET 1 FOR DIMENSIONS "C", "D".



NOMINAL SIZE		A ±.17 INCH (mm)	WEIGHT LB (kg)
6 IN METER DN160	SCH 10S	25.7 (653)	85 (38.6)
	SCH 40S	25.7 (653)	95 (43.1)
	SCH 80S	25.7 (653)	106 (48.1)
	SCH 160	25.3 (643)	155 (70.3)
8 IN METER DN200	SCH 10S	28.3 (719)	130 (59)
	SCH 40S	28.3 (719)	146 (66.2)
	SCH 80S	28.3 (719)	162 (73.5)
	SCH 160	26.8 (681)	272 (123.4)
10 IN METER DN250	SCH 10S	33.4 (848)	207 (93.9)
	SCH 40S	33.4 (848)	232 (105.2)
	SCH 80S	33.4 (848)	259 (117.5)
12 IN METER DN300	SCH 10S	35.1 (892)	300 (136.1)
	SCH 40S	35.1 (892)	330 (149.7)
	SCH 80S	35.1 (892)	366 (166)

6-12 INCH WELD-END STYLE

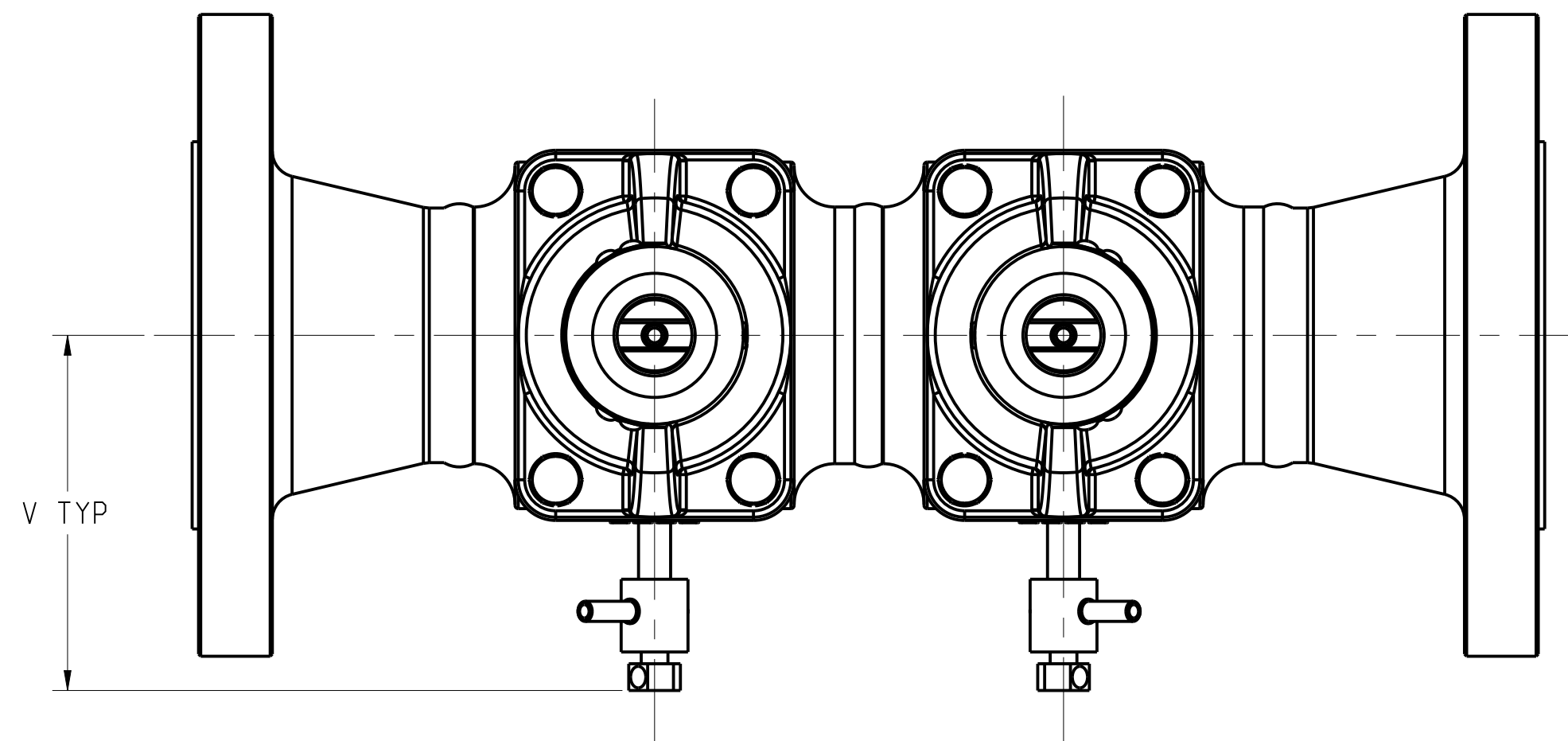
FOR DISPLAY OPTION, ADD 0.8 LB (0.4 kg)
REFER TO SHEET 2 FOR DIMENSIONS "C", "D".



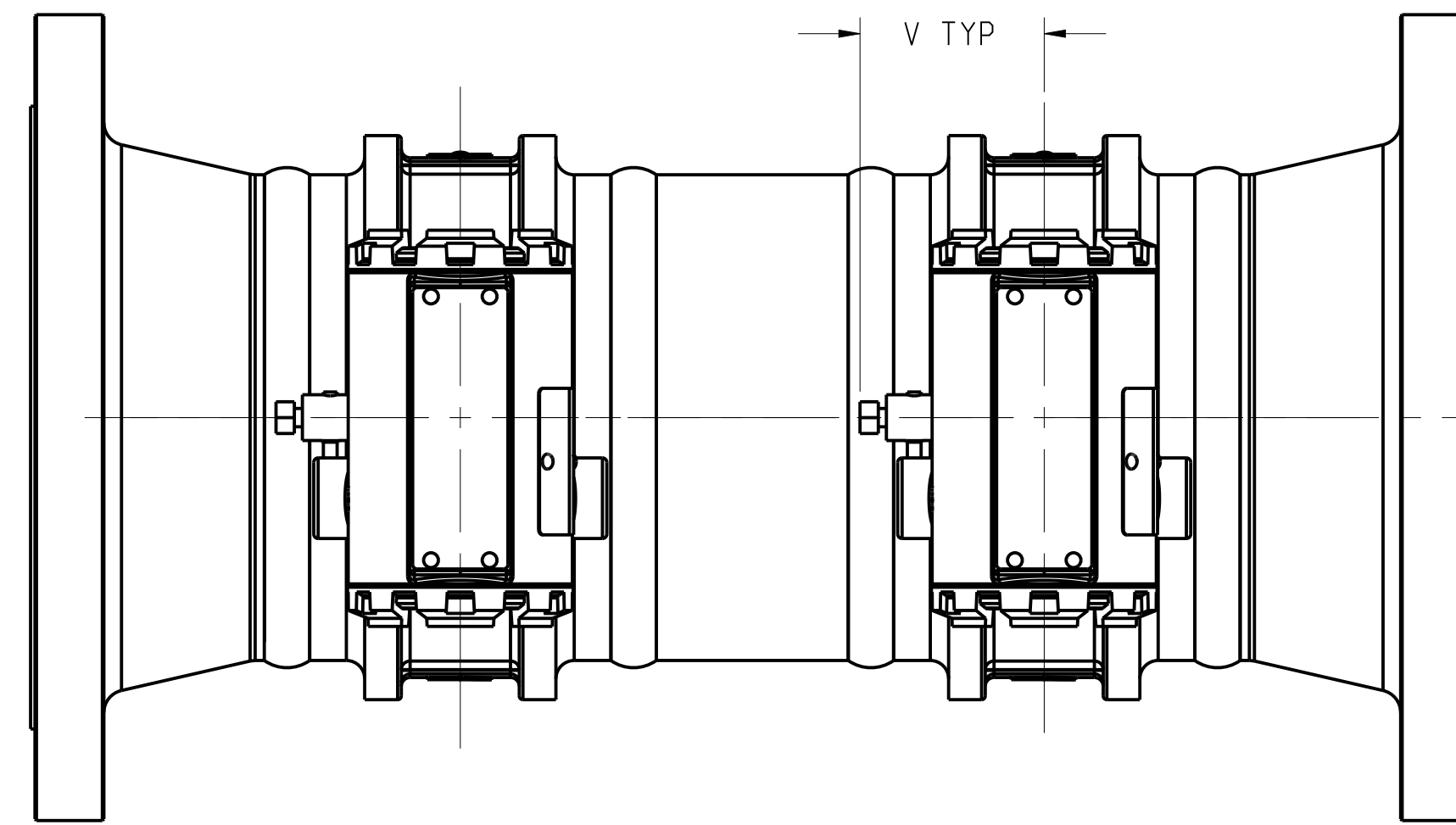
SCALE 1/3

CONFIDENTIAL AND PROPRIETARY INFORMATION IS CONTAINED HEREIN AND MUST BE HANDLED ACCORDINGLY.	SURFACE FINISH UNLESS OTHERWISE SPECIFIED	3RD ANGLE	SIZE D	SCALE 1/3	REV AB
UNLESS OTHERWISE SPECIFIED DIMENSIONS IN INCHES (mm). REMOVE ALL BURRS AND SHARP EDGES.		ROSEMOUNT			
TITLE		INSTALLATION DRAWING			
8800 VORTEX QUAD FLOW METER		DR. JAMES LAGE 6/10/19 DRAWING NO. 08800-0030			
FRACTIONS ± 1/32		ANGLES ± 2°		APP'D MARTIN K. 6/10/19	
DO NOT SCALE PRINT	CAD MAINTAINED, (PRO/E)	PRODUCT CODE	DOC TYPE	SHEET 3 OF 6	

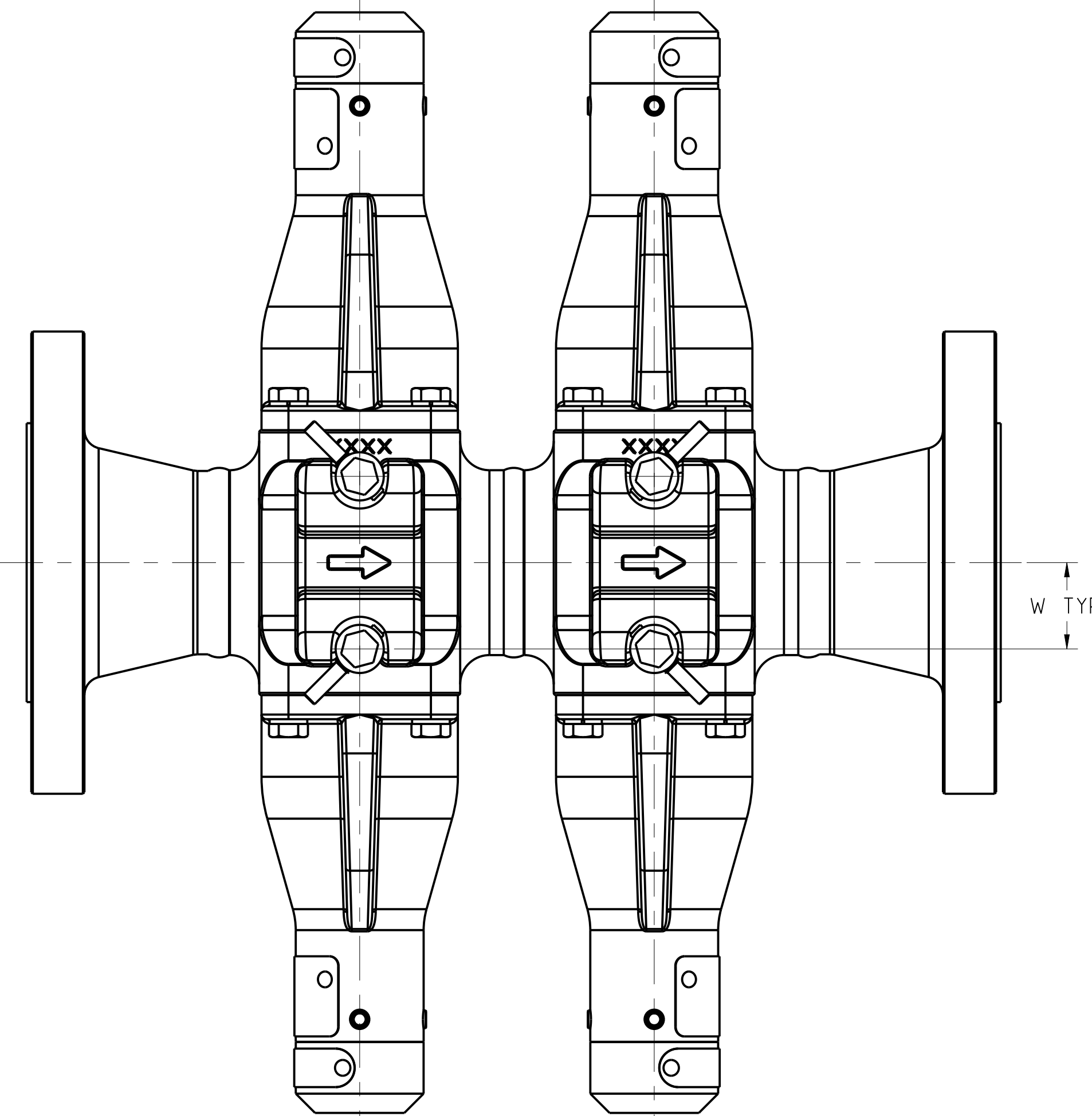
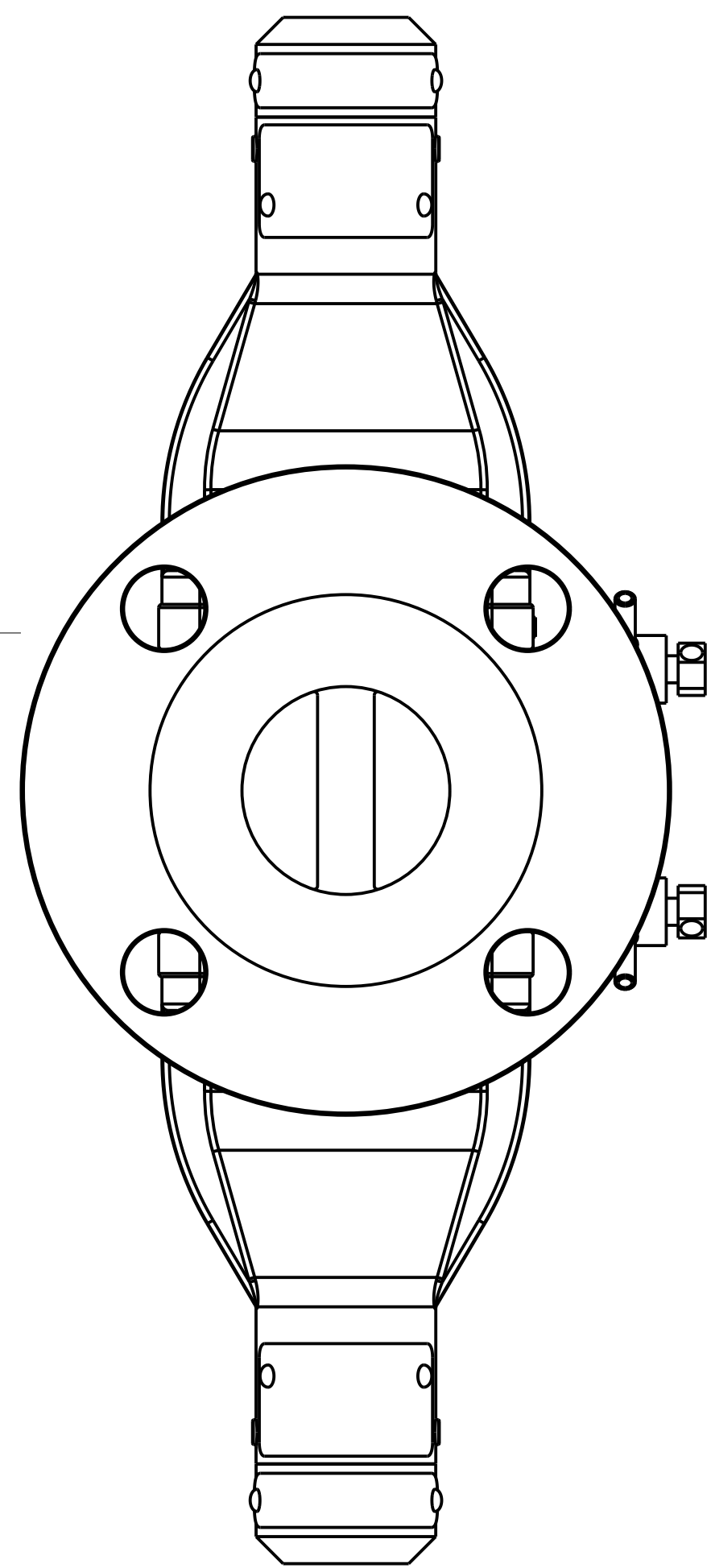
DRAWING NO. 08800-0030



TRANSMITTER 2 TRANSMITTER 4

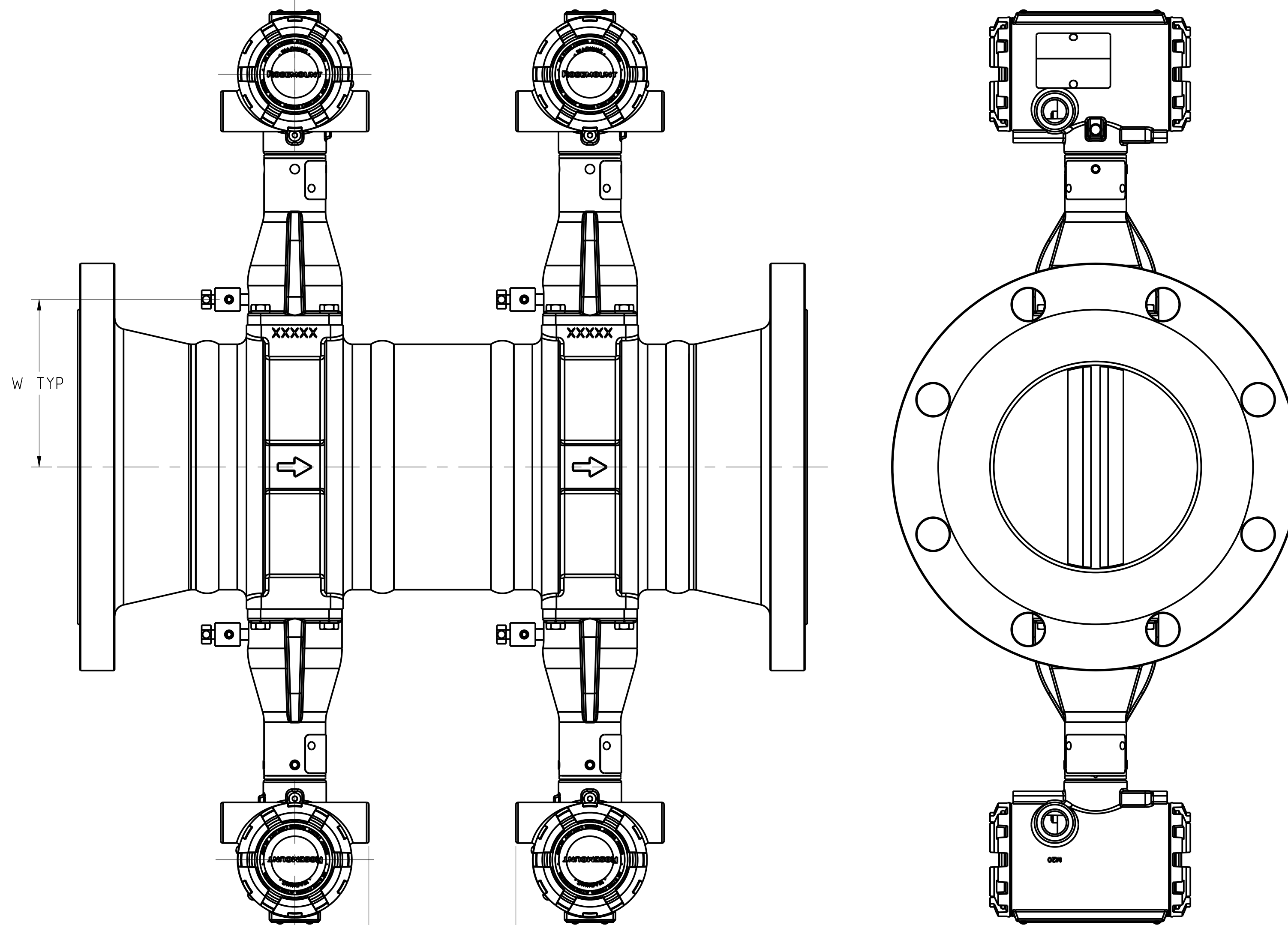


TRANSMITTER 2 TRANSMITTER 4



TRANSMITTER 1 TRANSMITTER 3

2" - 4"



TRANSMITTER 1 TRANSMITTER 3

6" - 12"

CPA OPTION		
LINE SIZE	"V"	"W"
2	3.18	1.12
3	3.18	1.73
4	3.18	2.25
6	2.51	4.53
8	2.51	5.57
10	2.51	6.58
12	2.51	7.49

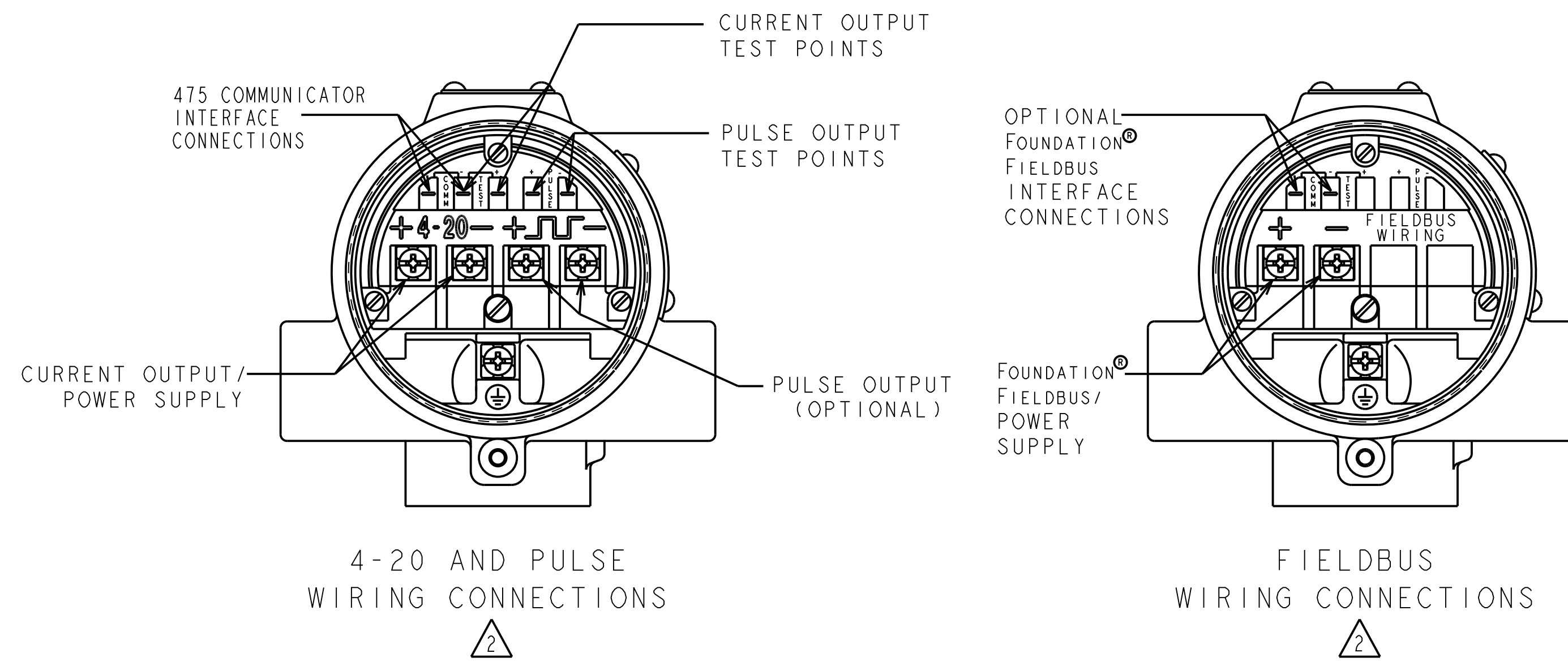
FLANGED CONFIGURATION SHOWN.
DIMENSIONS SHOWN ON THIS SHEET
ARE IDENTICAL REGARDLESS OF
PROCESS CONNECTION

CONFIDENTIAL AND PROPRIETARY INFORMATION IS CONTAINED HEREIN AND MUST BE HANDLED ACCORDINGLY.	SURFACE FINISH UNLESS OTHERWISE SPECIFIED	3RD ANGLE	SIZE D	SCALE 9/20	REV AB
ROSEMOUNT					
EMERSON					
TITLE INSTALLATION DRAWING					
8800 VORTEX QUAD FLOW METER					
UNLESS OTHERWISE SPECIFIED DIMENSIONS IN INCHES (MM). REMOVE ALL BURRS AND SHARP EDGES.		DR. JAMES LAGE 6/10/19 DRAWING NO. 08800-0030			
-DEC TOLERANCES-		APP'D MARTIN K. 6/10/19			
.X ± .1 (2.5)	.XX ± .02 (0.5)	ANGLES ± 2°			
.XXX ± .010 (0.25)	FRACTIONS ± 1/32	DO NOT SCALE PRINT CAD MAINTAINED, (PRO/E) PRODUCT CODE DOC TYPE SHEET 4 OF 6			

DRAWING NO. 08800-0030

1 2 3 4 5 6 7 8 9 10 11 12 13 14 15 16

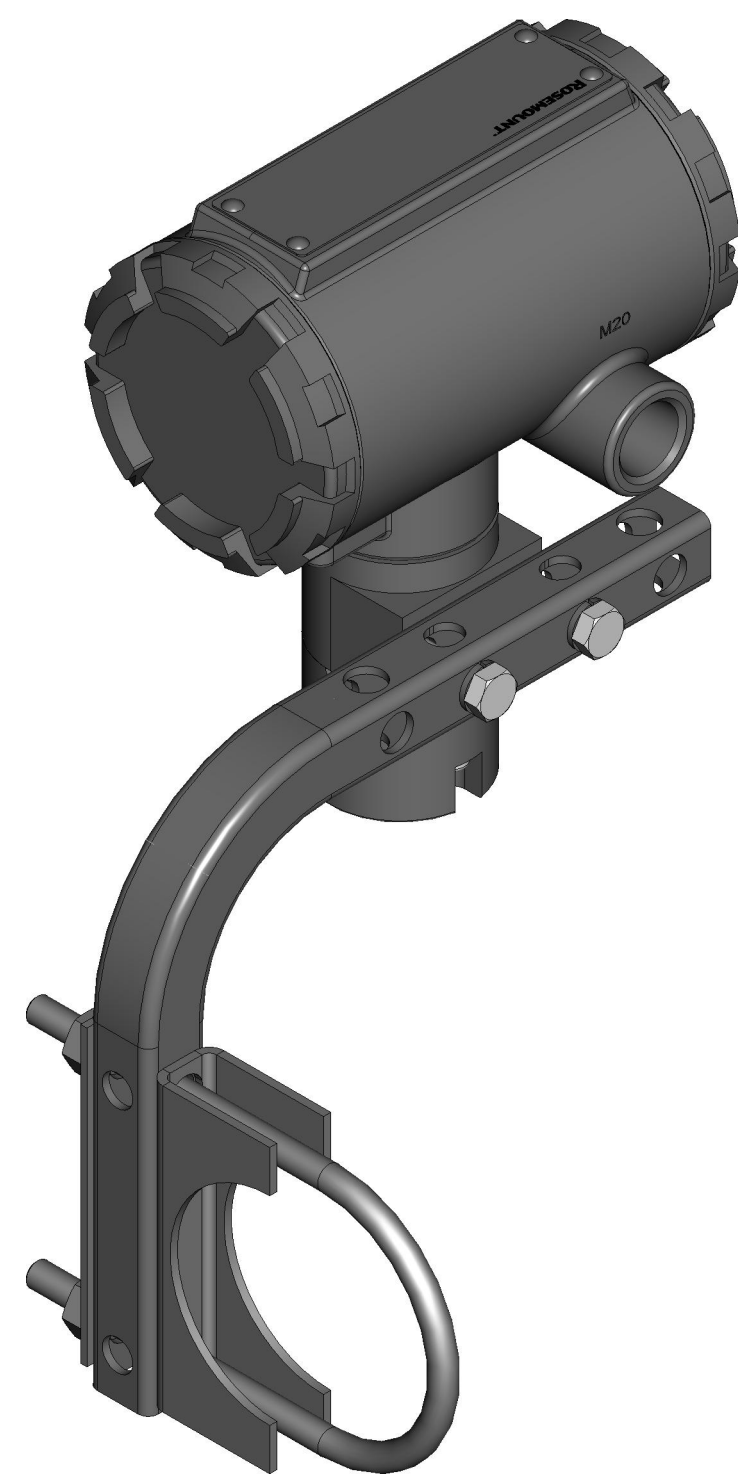
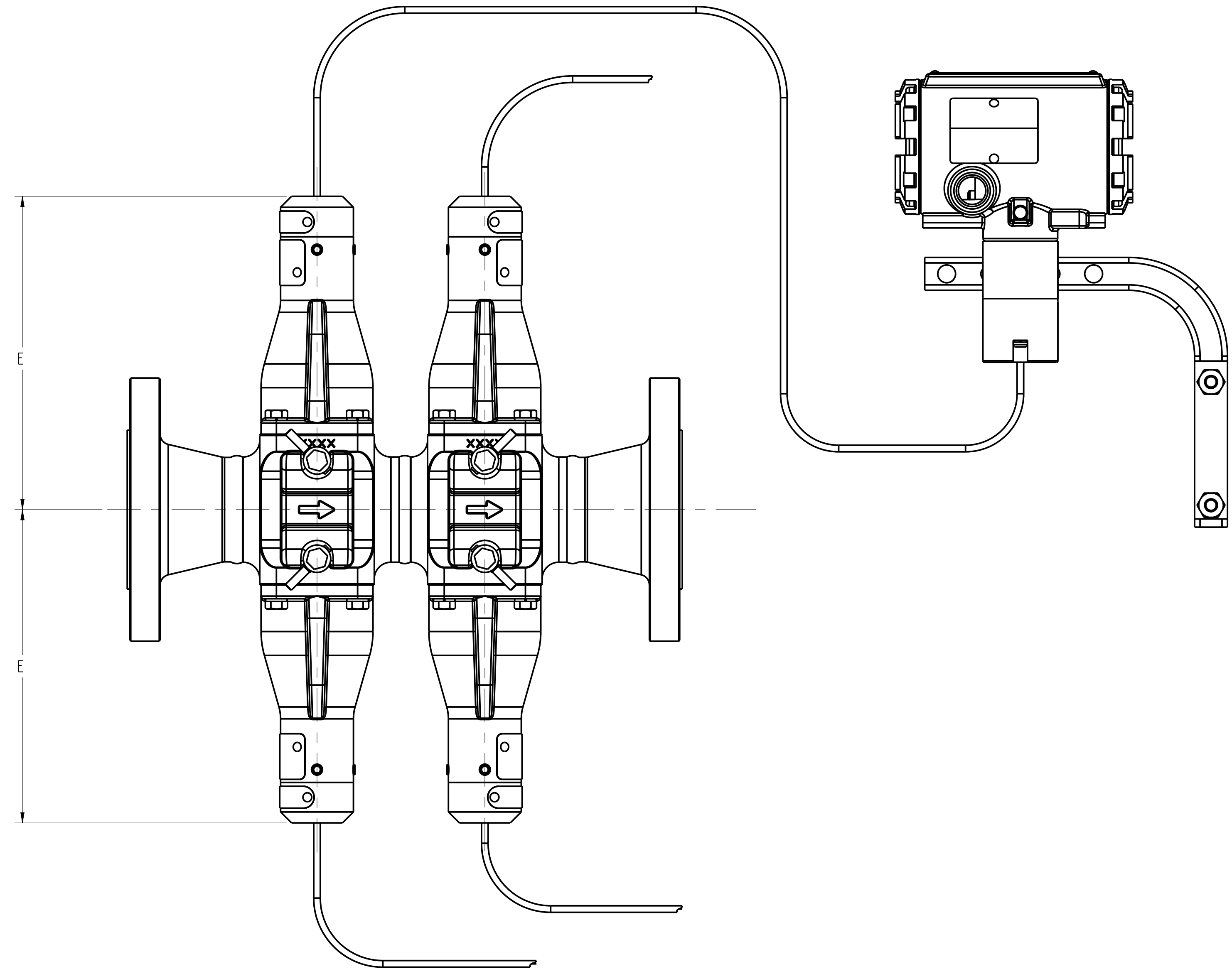
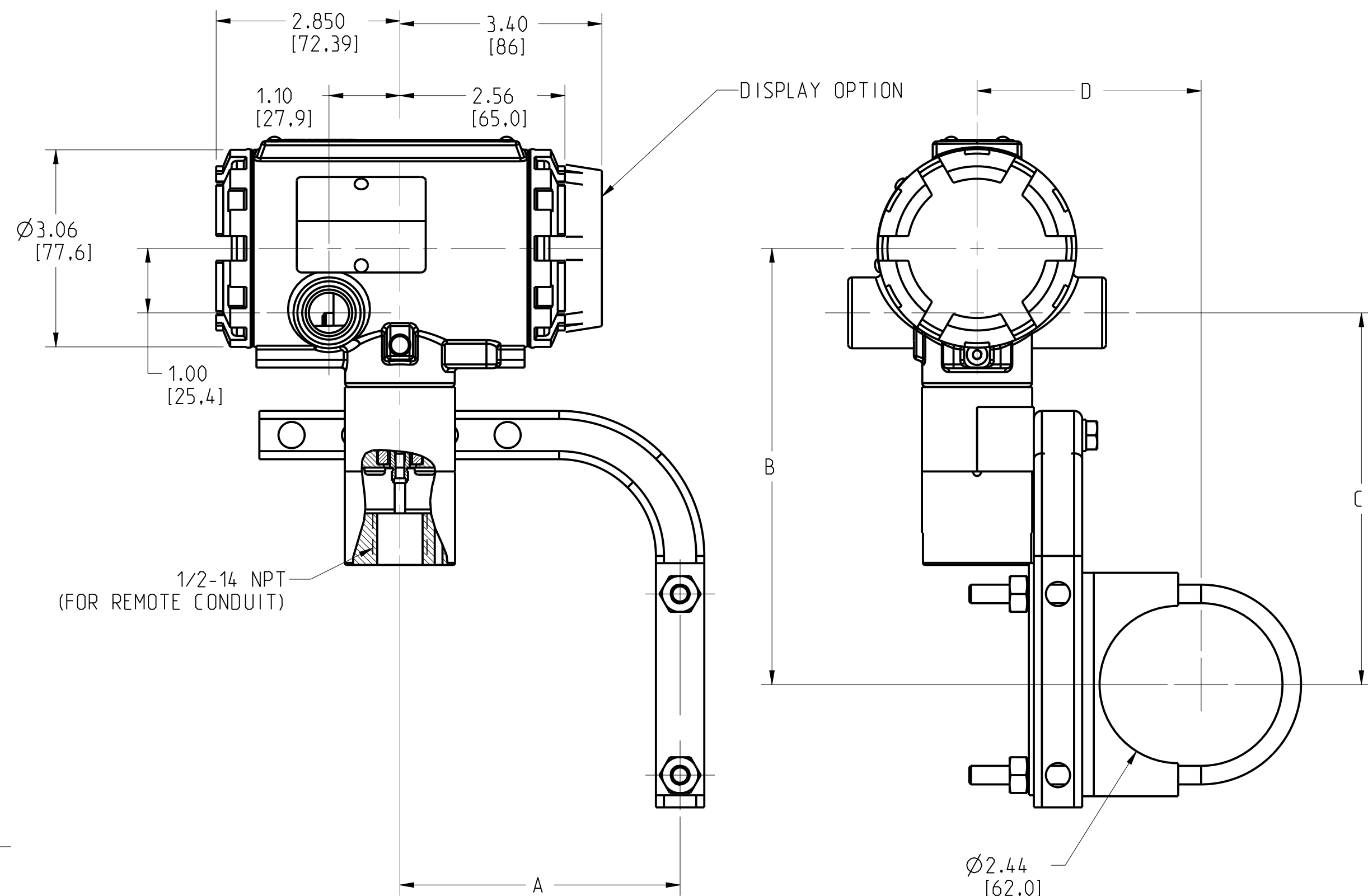
A B C D E F G H J K L M



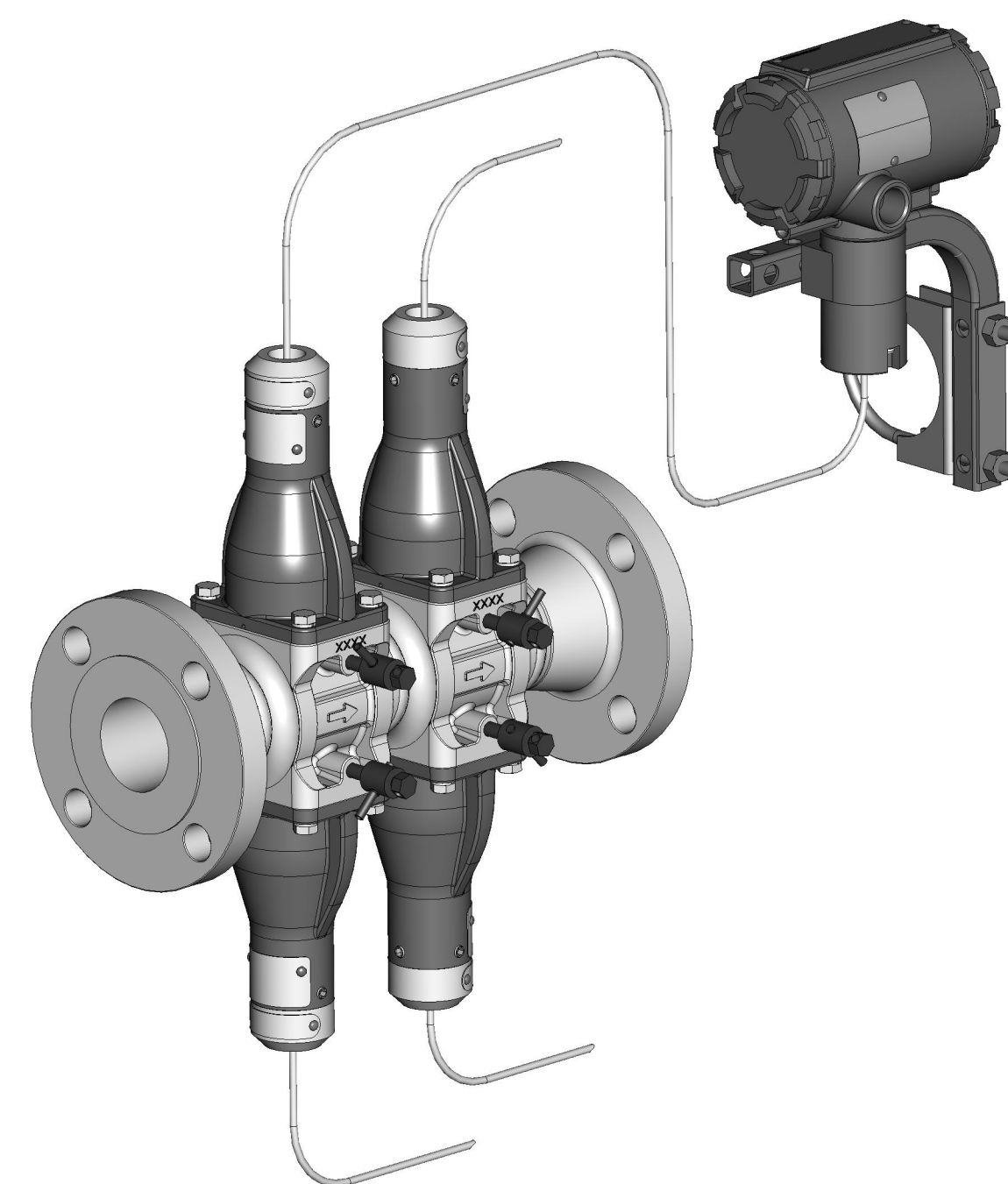
DETAIL A

DRAWING NO. 08800-0030

CONFIDENTIAL AND PROPRIETARY INFORMATION IS CONTAINED HEREIN AND MUST BE HANDLED ACCORDINGLY.	SURFACE FINISH UNLESS OTHERWISE SPECIFIED ✓	3RD ANGLE	SIZE D	SCALE 1/5	REV AB
UNLESS OTHERWISE SPECIFIED DIMENSIONS IN INCHES (MM). REMOVE ALL BURRS AND SHARP EDGES.	EMERSON ROSEMOUNT				
-DEC TOLERANCES- .X ± .1 (2.5) .XX ± .02 (0.5) .XXX ± .010 (0.25) FRACTIONS ± 1/32	TITLE INSTALLATION DRAWING 8800 VORTEX QUAD FLOW METER				
ANGLES ± 2°	DR. JAMES LAGE 6/10/19	DRAWING NO. 08800-0030		APP'D MARTIN K. 6/10/19	
DO NOT SCALE PRINT	CAD MAINTAINED, (PRO/E)	PRODUCT CODE	DOC TYPE	SHEET 5 OF 6	



ELECTRONICS HOUSING MATERIAL		
DIM	ALUMINUM	SST
A	4.35 [110]	4.47 [114]
B	6.77 [172]	6.89 [175]
C	5.77 [147]	5.89 [150]
D	3.12 [79]	3.37 [86]



REMOTE MOUNT

NOMINAL SIZE INCH (mm)	FLANGED STYLE "E" ±.2 (5)
2 IN METER	7.2 (183)
3 IN METER	7.8 (198)
4 IN METER	8.3 (211)
6 IN METER	9.5 (241)
8 IN METER	10.4 (264)
10 IN METER	11.5 (292)
12 IN METER	12.4 (315)

DRAWING NO. 08800-0030

CONFIDENTIAL AND PROPRIETARY INFORMATION IS CONTAINED HEREIN AND MUST BE HANDLED ACCORDINGLY.	SURFACE FINISH UNLESS OTHERWISE SPECIFIED ✓	3RD ANGLE	SIZE D	SCALE 1/5	REV AB
ROSEMOUNT					
EMERSON					
TITLE INSTALLATION DRAWING					
8800 VORTEX QUAD FLOW METER					
UNLESS OTHERWISE SPECIFIED DIMENSIONS IN INCHES (MM). REMOVE ALL BURRS AND SHARP EDGES.		DR. JAMES LAGE 6/10/19 DRAWING NO. 08800-0030			
-DEC TOLERANCES- .X ± .1 [2.5] .XX ± .02 [0.5] .XXX ± .010 [0.25]		APP'D MARTIN K. 6/10/19			
FRACTIONS ± 1/32		ANGLES ± 2°			
DO NOT SCALE PRINT	CAD MAINTAINED, (PRO/E)	PRODUCT CODE	DOC TYPE	SHEET 6 OF 6	