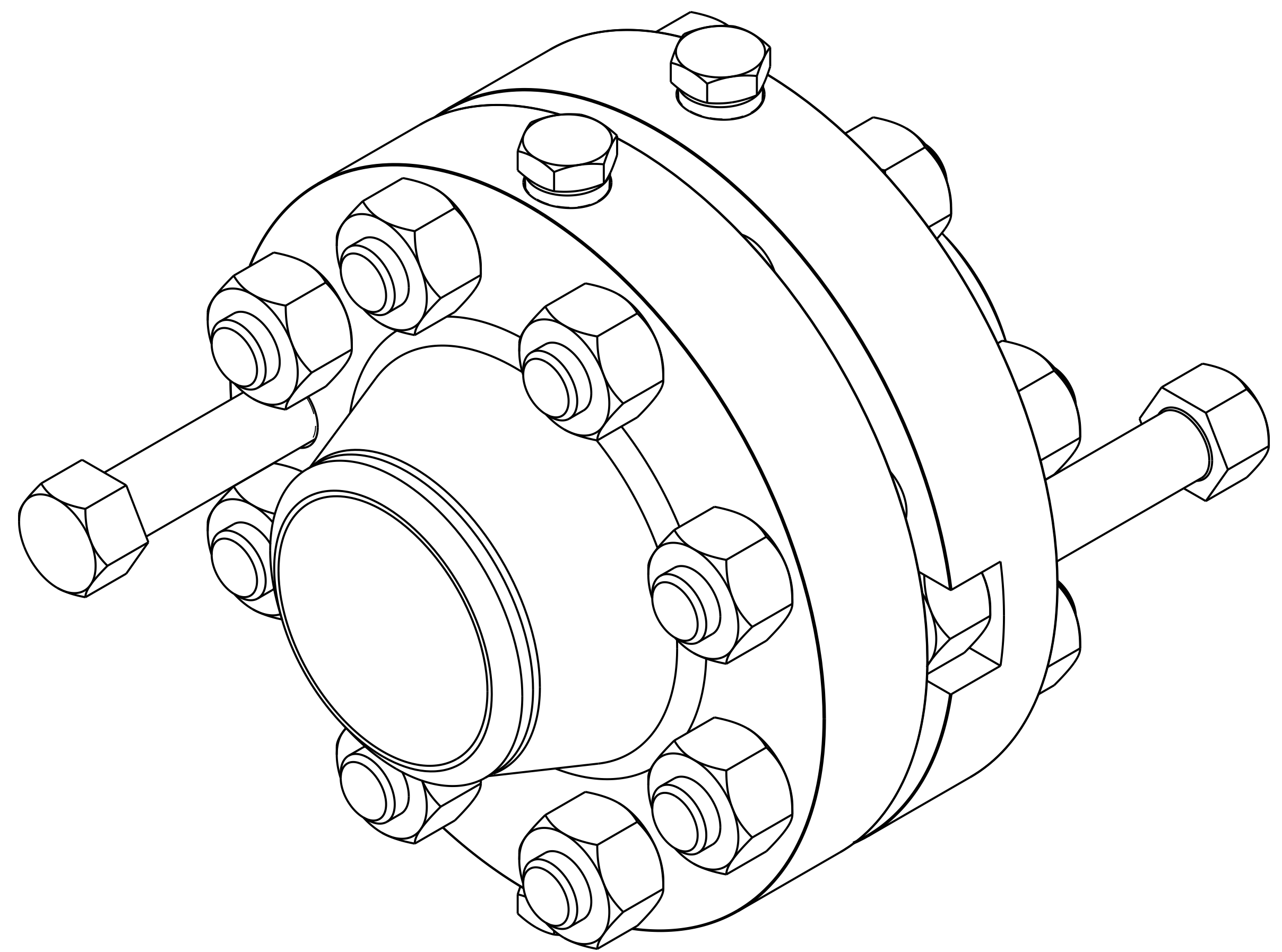


REVISION TABLE			
REVISION	ECO NO.	APP'D	DATE
AE	DSI1056593	DK	04/21/21
DESCRIPTION			
Update sheets 5, 7, & 8 to clarify tap location based on gasket type.			

NOTES:

- ROSEMOUNT INC. CERTIFIES THIS DRAWING IS IN ACCORDANCE WITH ROSEMOUNT ENGINEERING SPECIFICATIONS AND ACCURATELY REPRESENTS THE EQUIPMENT FURNISHED.
- THE FOLLOWING 1496 CONFIGURATIONS ARE MANUFACTURED TO ASME B16.36 AND MEET THE REQUIREMENTS OF AGA-3, ISO-5167, ASME MFC-3M, AND ASME MFC-14M (NPS(DN) < 2 (50)):
 - 1496WN (RAISED FACE, WELD NECK, ORIFICE FLANGE UNION) (RECOMMENDED FOR BEST MEASUREMENT)
 - 1496RJ (RING JOINT, WELD NECK, ORIFICE FLANGE UNION) (RECOMMENDED FOR BEST MEASUREMENT)
 - 1496SO (RAISED FACE, SLIP-ON, ORIFICE FLANGE UNION)
 - 1496TH (RAISED FACE, THREADED, ORIFICE FLANGE UNION)
- THE FOLLOWING 1496 CONFIGURATIONS ARE MANUFACTURED TO EN-1092-1 AND MEET THE REQUIREMENTS OF ISO-5167, ASME MFC-3M, AND ASME MFC-14M (NPS(DN) < 2 (50)):
 - 1496DN (RAISED FACE, WELD NECK, ORIFICE FLANGE UNION) (WITH FOLLOWING EXCEPTIONS)
 - THE FLANGE THICKNESS IS INCREASED TO A MINIMUM VALUE OF 38 MM (1.5 INCH) TO SUPPORT ADDING THE PRESSURE TAP.
 - WHEN THE FLANGE THICKNESS IS LARGER THAN STANDARD, THE FLANGE LENGTH INCREASES BY A CORRESPONDING AMOUNT.
- FOR MODEL SELECTIONS, MATERIALS, AND OPTIONS, REFER TO THE ROSEMOUNT MODEL 1496 PRODUCT DATA SHEET.
- MAXIMUM OPERATING TEMPERATURES ARE DEPENDENT ON MATERIAL AND GASKET SELECTIONS. REFER TO TABLE 1 ON SHEET 2 FOR FLANGE AND BOLT MATERIALS.
- MODEL 1496 INCLUDES FLANGE UNIONS, STUDS, NUTS, GASKETS, JACK SCREWS, AND PLUGS (PLUGS ARE NOT SUPPLIED WITH SOCKET TAP FLANGES). GASKETS ARE NOT INCLUDED WITH RTJ FLANGE UNIONS - ORDER 1495UC ORIFICE PLATE WITH THE PH OPTION TO PROVIDE THE RTJ GASKET.
- REFER TO NOTES ON SHEET 3 FOR ASSUMPTIONS USED IN CALCULATING THE OVERALL LENGTHS IN TABLES 2 & 3.
- STANDARD GASKET IS 1/16" THICK NON-ASBESTOS TYPE. FOR SERVICE RATINGS OF ANSI 600# AND OVER, 1/8" THICK SPIRAL WOUND GASKETS ARE SUPPLIED AS STANDARD. REFER TO SHEET 9.
- THE JACK SCREWS MAY BE EITHER PROVIDED AS SHOWN, OR THE FLANGE MAY BE DIRECTLY TAPPED, IN WHICH CASE THE FLANGE IS NOT SLOTTED AND A NUT IS NOT PROVIDED.
- ORIFICE PLATE AND FLANGE ORIENTATION SHOWN FOR REFERENCE ONLY. FOR RECOMMENDED INSTALLATION LOCATION AND ORIENTATION REFER TO INSTALLATION INSTRUCTION MANUAL 00809-0100-4792 AND QUICK INSTALLATION GUIDE (QIG) 00825-0100-4792.



©2015 ROSEMOUNT INC. ROSEMOUNT INC. CERTIFIES THIS DRAWING ACCURATELY REPRESENTS THE EQUIPMENT FURNISHED IN ACCORDANCE WITH ROSEMOUNT ENGINEERING SPECIFICATIONS. UNIT NOTES IN INCHES (mm).

REFERENCE ROSEMOUNT PRODUCT SPECIFICATIONS FOR PRODUCT SPECIFICATIONS. CLICK HERE

EMERSON

3RD ANGLE

SIZE D SCALE NTS

TITLE ROSEMOUNT 1496 TYPE I DRAWING

DR. M. Hering 10/01/18 DRAWING NO. 01496-1001

APP'D D. Katke 10/25/18

CAD MAINTAINED. (PRO/E) SHEET 1 OF 10

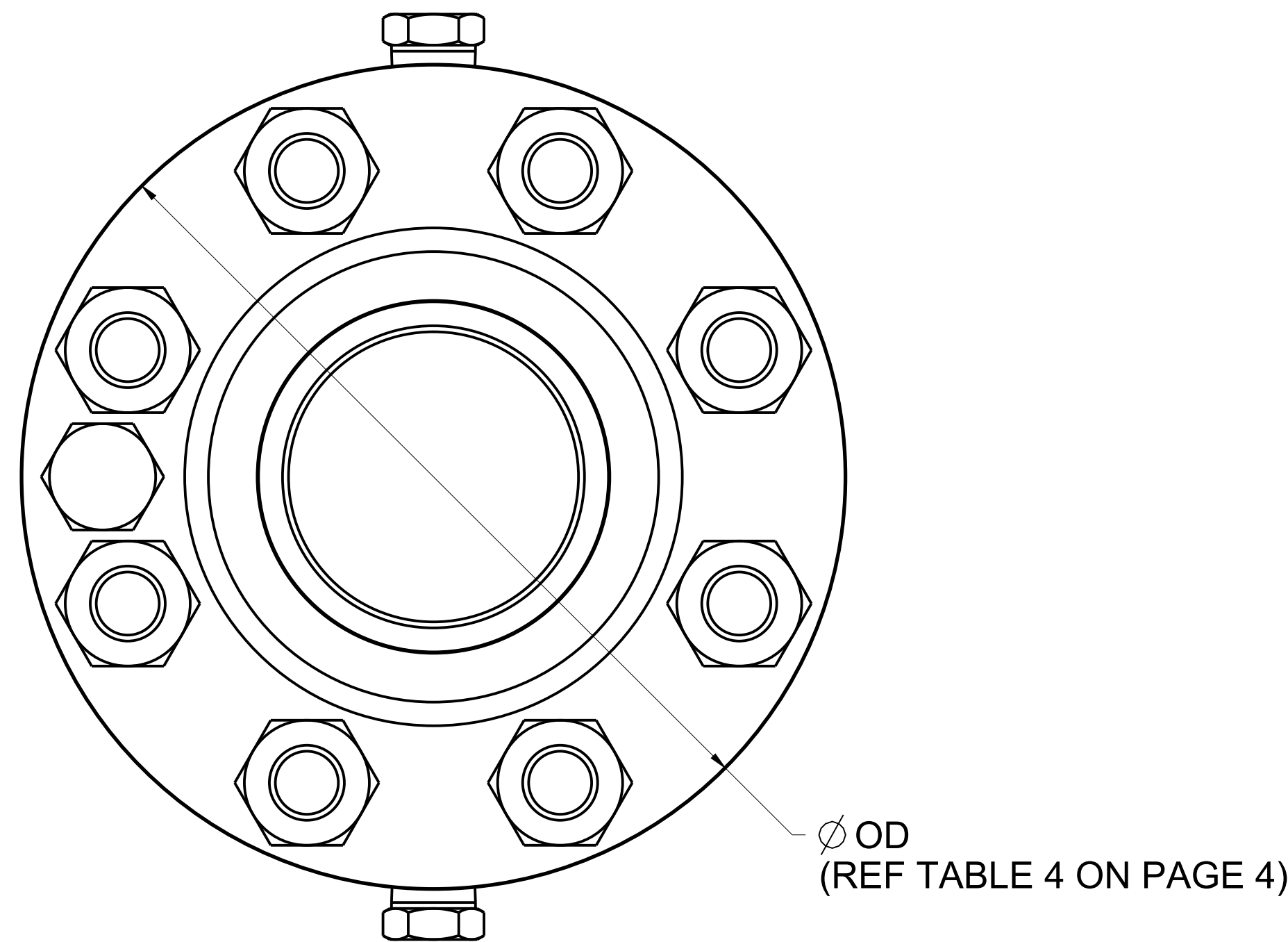
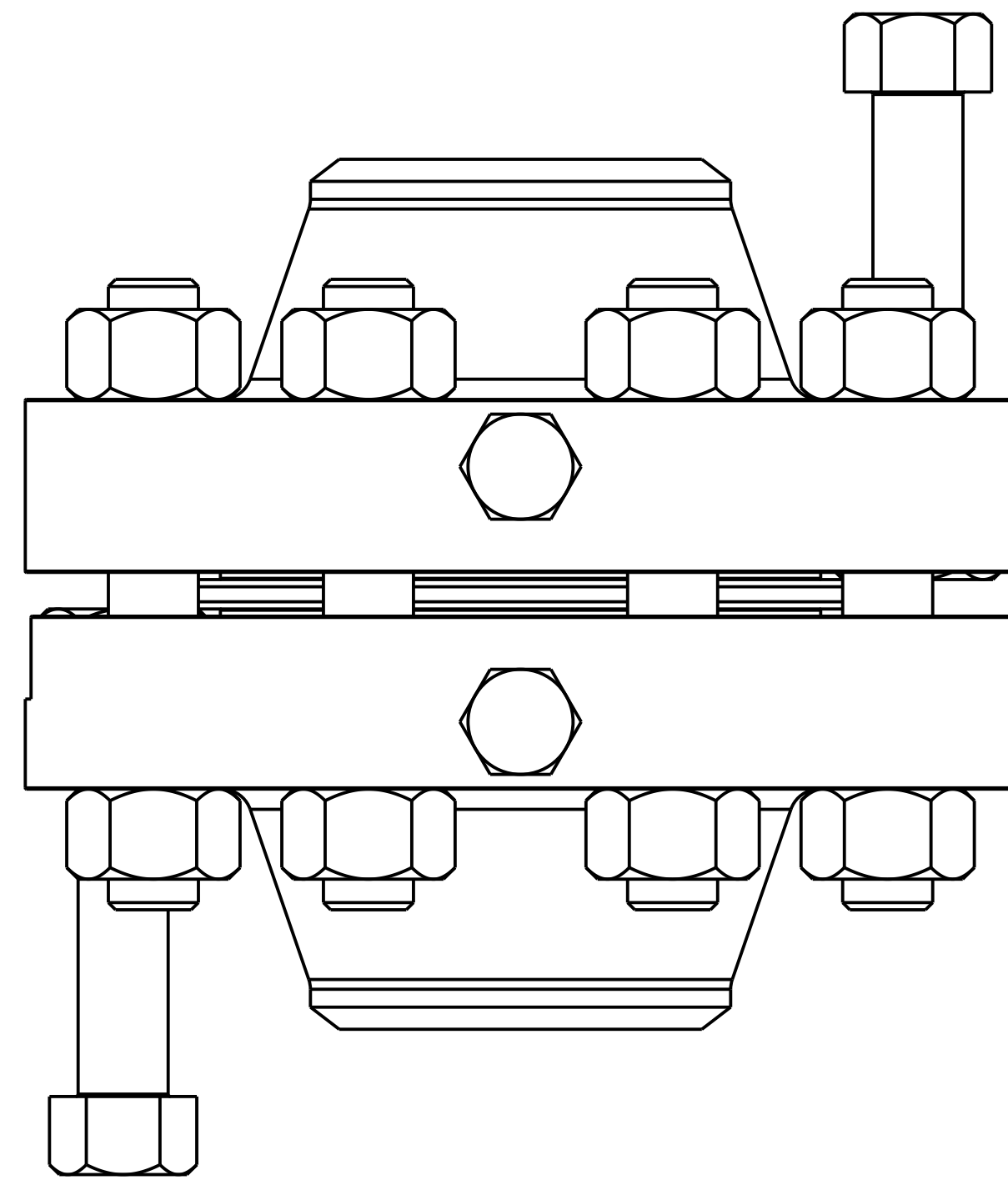
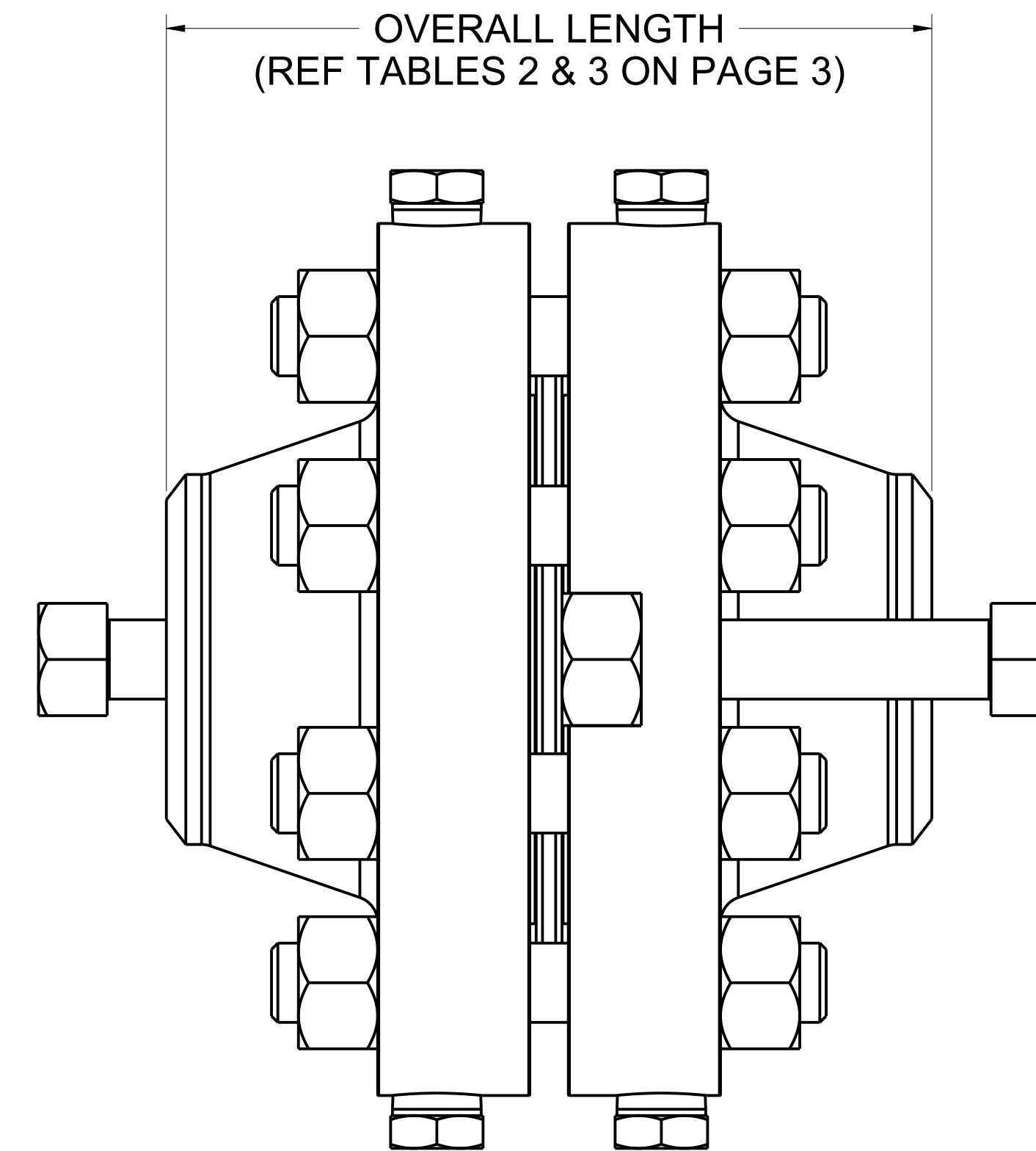


TABLE 1: MATERIALS OF CONSTRUCTION

COMPONENT	STANDARD	MATERIAL DESCRIPTION						COMMENTS
		CARBON STEEL	304/304L STAINLESS STEEL	316/316L STAINLESS STEEL	316Ti STAINLESS STEEL	ALLOY 400	ALLOY C276	
FLANGE	ASTM	A105	A182 F304/304L	A182 F316/316L	A182 F316Ti (S31635)	B564 N04400	B462 N10276 (OR B564)	FOR ASME B16.36 OR EN-1092-1 FLANGES
	EN	EN 10222-2 P245GH (1.0352)	EN 10222-5 1.4301/1.4307	EN 10222-5 1.4401/1.4404	EN 10222-5 1.4571	N/A	N/A	FOR EN-1092-1 FLANGES ONLY
BOLTING	ASTM	A193 B7 / A194 2H (Standard) A193 B7M / A194 2HM (NACE Option) A193 B8M / A194 8M (Stainless Bolting Option)						FOR ASME B16.36 OR EN-1092-1 FLANGES
	EN	EN 10269 42CrMo4 (1.7225) (Standard) EN 10269 X6NiCrTiMoVB (1.4980) (Stainless Bolting Option)						FOR EN-1092-1 FLANGES ONLY
TEMPERATURE RANGE	MIN	-20°F -29°C				-325°F -198°C		
	MAX	800°F 427°C	1000°F 538°C			900°F 482°C	1250°F 677°C	



©2015 ROSEMOUNT, INC. ALL RIGHTS RESERVED. THIS DRAWING IS THE PROPERTY OF ROSEMOUNT, INC. AND IS TO BE USED IN ACCORDANCE WITH THE ROSEMOUNT ENGINEERING SPECIFICATIONS. UNIT NOTES IN INCHES (mm).

REFERENCE ROSEMOUNT PRODUCT SPECIFICATIONS. CLICK HERE

CAD MAINTAINED: (PRO/EI)

3RD ANGLE

EMERSON

TITLE
ROSEMOUNT 1496
TYPE I DRAWING

DR. M. Hering | 10/01/18 | DRAWING NO. 01496-1001

APP'D D. Kaltke | 10/25/18

SHEET 2 OF 10

TABLE 2: OVERALL LENGTH - ASME B16.36 ORIFICE FLANGES

LINE SIZE		1496WN - RAISED FACE, WELD NECK										1496RJ - RING JOINT, WELD NECK [4]										1496SO - RAISED FACE, SLIP-ON		1496TH - RAISED FACE, THREADED			
		CLASS 300 [1]		CLASS 600 [2][3]		CLASS 900 [3]		CLASS 1500 [3]		CLASS 2500 [3]		CLASS 300		CLASS 600		CLASS 900		CLASS 1500		CLASS 2500		CLASS 300 [1]		CLASS 300 [1]			
		inch	mm	inch	mm	inch	mm	inch	mm	inch	mm	inch	mm	inch	mm	inch	mm	inch	mm	inch	mm	inch	mm	inch	mm		
1/2"	15	6.25	159	6.38	162	USE CLASS 1500				6.88	175	7.25	184	6.81	173	6.81	173	USE CLASS 1500		7.00	178	7.38	187	3.88	99	NOT AVAILABLE	
3/4"	20	6.50	165	6.63	168					7.38	187	7.63	194	7.13	181	7.13	181			7.50	191	7.75	197	4.00	102		
1"	25	6.75	171	6.88	175					7.38	187	8.13	207	7.38	187	7.38	187			7.50	191	8.25	210	4.00	102		
1-1/2"	40	7.00	178	7.13	181					7.88	200	9.63	245	7.63	194	7.63	194			8.00	203	9.75	248	4.00	102		
2"	50	7.00	178	7.13	181					8.88	226	10.88	276	7.81	198	7.81	198			9.13	232	11.25	286	4.13	105		
2-1/2"	65	7.25	184	7.38	187					9.13	232	12.13	308	8.06	205	8.06	205			9.38	238	12.56	319	4.25	108		
3"	80	7.25	184	7.38	187	8.88	226	10.13	257	14.13	359	8.06	205	8.06	205	9.13	232	10.38	264	14.56	370	4.38	111	4.38	111		
4"	100	7.50	191	8.88	226	9.88	251	10.63	270	15.88	403	8.31	211	9.19	233	10.13	257	10.88	276	16.50	419	4.50	114	4.50	114		
6"	150	8.13	207	10.13	257	11.88	302	14.38	365	22.38	568	9.00	229	10.44	265	12.13	308	14.81	376	23.13	588	4.50	114	4.50	114		
8"	200	9.00	229	11.38	289	13.63	346	17.63	448	25.88	657	9.94	252	11.81	300	14.06	357	18.38	467	26.88	683	5.13	130	5.13	130		
10"	250	9.50	241	12.88	327	15.38	391	20.88	530	33.88	861	10.44	265	13.31	338	15.75	400	21.63	549	35.19	894	5.50	140	NOT AVAILABLE			
12"	300	10.50	267	13.13	334	16.63	422	23.13	588	37.38	949	11.44	291	13.56	344	17.06	433	24.13	613	38.75	984	6.00	152				
14"	350	11.50	292	13.88	353	17.63	448	24.38	619	NOT AVAILABLE		12.44	316	14.31	363	18.38	467	25.56	649	6.25	159						
16"	400	11.88	302	15.00	381	18.00	457	25.50	648			12.81	325	15.44	392	18.75	476	26.88	683	6.88	175						
18"	450	12.88	327	15.50	394	19.00	483	26.75	679			13.81	351	15.94	405	19.88	505	28.13	715	7.38	187						
20"	500	13.13	334	16.00	406	20.50	521	29.00	737			14.25	362	16.56	421	21.25	540	30.31	770	7.88	200						
24"	600	13.63	346	17.00	432	24.00	610	33.00	838			14.94	379	17.75	451	25.19	640	34.75	883	8.75	222						


TABLE 3: OVERALL LENGTH - EN 1092-1 ORIFICE FLANGES


LINE SIZE		1496DN - RAISED FACE, WELD NECK											
		PN10 [5]		PN16 [5]		PN25 [5]		PN40 [5]		PN63 [6]		PN100 [6]	
NPS	DN	inch	mm	inch	mm	inch	mm	inch	mm	inch	mm	inch	mm
1/2"	15	4.94	126	4.94	126	4.94	126	4.94	126	5.31	135	5.31	135
3/4"	20	4.94	126	4.94	126	4.94	126	4.94	126	5.38	137	5.38	137
1"	25	4.94	126	4.94	126	4.94	126	4.94	126	6.00	153	6.00	153
1-1/2"	40	5.38	136	5.38	136	5.38	136	5.38	136	6.19	157	6.19	157
2"	50	5.38	136	5.38	136	5.44	138	5.44	138	6.19	157	6.50	165
2-1/2"	65	5.38	136	5.38	136	5.56	142	5.56	142	6.63	169	6.94	177
3"	80	5.56	142	5.56	142	5.88	150	5.88	150	6.81	173	6.94	177
4"	100	5.75	146	5.75	146	6.44	164	6.44	164	7.13	181	7.63	193
6"	150	5.81	148	5.81	148	6.94	176	6.94	176	8.00	203	9.44	239
8"	200	6.25	158	6.25	158	7.19	182	7.50	190	9.00	229	10.56	269
10"	250	6.56	166	6.69	170	7.63	194	8.50	216	10.19	259	12.69	323
12"	300	6.56	166	7.19	182	7.81	198	9.31	236	11.38	289	13.75	349
14"	350	6.56	166	7.31	186	8.13	206	10.06	256	12.19	309	15.25	387
16"	400	6.94	177	7.50	191	9.00	229	11.00	279	13.06	332	NOT AVAILABLE	
18"	450	6.81	173	7.19	183	9.00	229	11.00	279				
20"	500	7.06	179	7.13	181	10.19	259	11.38	289				
24"	600	7.44	189	7.31	185	10.19	259	12.19	309				

NOTES THIS SHEET:

- 1) CLASS 300 DIMENSIONS USE COMBINED GASKET AND PLATE THICKNESS OF .25 INCH (6 MM) (TO NPS 14) AND .38 INCH (9 MM) (NPS 16 - 24)
- 2) CLASS 600 FLANGES IN NPS < 4 HAVE .06 INCH (1.5 MM) RAISED FACE HEIGHT (FLANGES NPS 4-24 HAVE .25 INCH (6 MM) RAISED FACE HEIGHT)
- 3) FLANGES > CLASS 300 DIMENSIONS USE COMBINED GASKET AND PLATE THICKNESS OF .38 INCH (9 MM) (TO NPS 14) AND .50 INCH (13 MM) (NPS 16 - 24)
- 4) RING JOINT FLANGE DIMENSIONS ASSUME A PLATE THICKNESS OF .13 INCH (3 MM) (TO NPS 6), .25 INCH (6 MM) (NPS 8 - 12), AND .38 INCH (9 MM) (NPS 14 - 24)
- 5) PN10 - PN40 DIMENSIONS USE COMBINED GASKET AND PLATE THICKNESS OF 6 MM (.25 INCH)(TO DN350) AND 9 MM (.38 INCH) (DN400 - DN600)
- 6) PN63 - PN100 DIMENSIONS USE COMBINED GASKET AND PLATE THICKNESS OF 9 MM (.38 INCH) (TO DN350) AND 12 MM (.50 INCH) (DN400 - DN600)

©2015 ROSEMOUNT, INC. ROSEMOUNT, INC. ACCEPTS THE DRAWING AS IS IN ACCORDANCE WITH ROSEMOUNT ENGINEERING SPECIFICATIONS. UNIT NOTES IN INCHES (mm). REFERENCE ROSEMOUNT PRODUCT SPECIFICATIONS. CLICK HERE



3RD ANGLE  SIZE D SCALE NTS

TITLE ROSEMOUNT 1496 TYPE I DRAWING

DR. M. Hering 10/01/18 DRAWING NO. 01496-1001

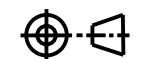
APP'D D. Kaltke 10/25/18

CAD MAINTAINED (PRO/EI) SHEET 3 OF 10

LINE SIZE		1496WN, 1496RJ, 1496SO, 1496TH										1496DN											
		CLASS 300		CLASS 600		CLASS 900		CLASS 1500		CLASS 2500		PN10		PN16		PN25		PN40		PN63		PN100	
		inch	mm	inch	mm	inch	mm	inch	mm	inch	mm	inch	mm	inch	mm	inch	mm	inch	mm	inch	mm	inch	mm
1/2"	15	3.75	95	3.75	95			4.75	121	5.25	133	3.75	95	3.75	95	3.75	95	3.75	95	4.13	105	4.13	105
3/4"	20	4.62	117	4.62	117			5.12	130	5.50	140	4.13	105	4.13	105	4.13	105	4.13	105	5.13	130	5.13	130
1"	25	4.88	124	4.88	124			5.88	149	6.25	159	4.50	115	4.50	115	4.50	115	4.50	115	5.50	140	5.50	140
1-1/2"	40	6.12	155	6.12	155			7.00	178	8.00	203	5.88	150	5.88	150	5.88	150	5.88	150	6.69	170	6.69	170
2"	50	6.50	165	6.50	165			8.50	216	9.25	235	6.50	165	6.50	165	6.50	165	6.50	165	7.06	180	7.69	195
2-1/2"	65	7.50	191	7.50	191			9.62	244	10.50	267	7.31	185	7.31	185	7.31	185	7.31	185	8.06	205	8.69	220
3"	80	8.25	210	8.25	210	9.50	241	10.50	267	12.00	305	7.88	200	7.88	200	7.88	200	7.88	200	8.44	215	9.06	230
4"	100	10.00	254	10.75	273	11.50	292	12.25	311	14.00	356	8.69	220	8.69	220	9.25	235	9.25	235	9.81	250	10.44	265
6"	150	12.50	318	14.00	356	15.00	381	15.50	394	19.00	483	11.25	285	11.25	285	11.81	300	11.81	300	13.56	345	14.00	355
8"	200	15.00	381	16.50	419	18.50	470	19.00	483	21.75	552	13.38	340	13.38	340	14.19	360	14.75	375	16.31	415	16.94	430
10"	250	17.50	445	20.00	508	21.50	546	23.00	584	26.50	673	15.56	395	15.94	405	16.75	425	17.69	450	18.50	470	19.88	505
12"	300	20.50	521	22.00	559	24.00	610	26.50	673	30.00	762	17.50	445	18.13	460	19.13	485	20.25	515	20.88	530	23.06	585
14"	350	23.00	584	23.75	603	25.25	641	29.50	749			19.88	505	20.50	520	21.88	555	22.81	580	23.63	600	25.81	655
16"	400	25.50	648	27.00	686	27.75	705	32.50	826			22.25	565	22.81	580	24.44	620	26.00	660	26.38	670		
18"	450	28.00	711	29.25	743	31.00	787	36.00	914			24.19	615	25.19	640	26.38	670	26.94	685				
20"	500	30.50	775	32.00	813	33.75	857	38.75	984			26.38	670	28.13	715	28.75	730	29.75	755				
24"	600	36.00	914	37.00	940	41.00	1041	46.00	1168			30.69	780	33.06	840	33.25	845	35.06	890				

©2015 ROSEMOUNT, INC.
ROSEMOUNT AND ALL OTHER
TRADEMARKS ARE REGISTERED IN
THESE DRAWINGS AND SHALL BE
USED IN ACCORDANCE WITH
ROSEMOUNT ENGINEERING
SPECIFICATIONS.
UNIT NOTES IN INCHES (mm).

REFERENCE ROSEMOUNT
PRODUCT SPECIFICATIONS FOR
PRODUCT SPECIFICATIONS.
CLICK HERE

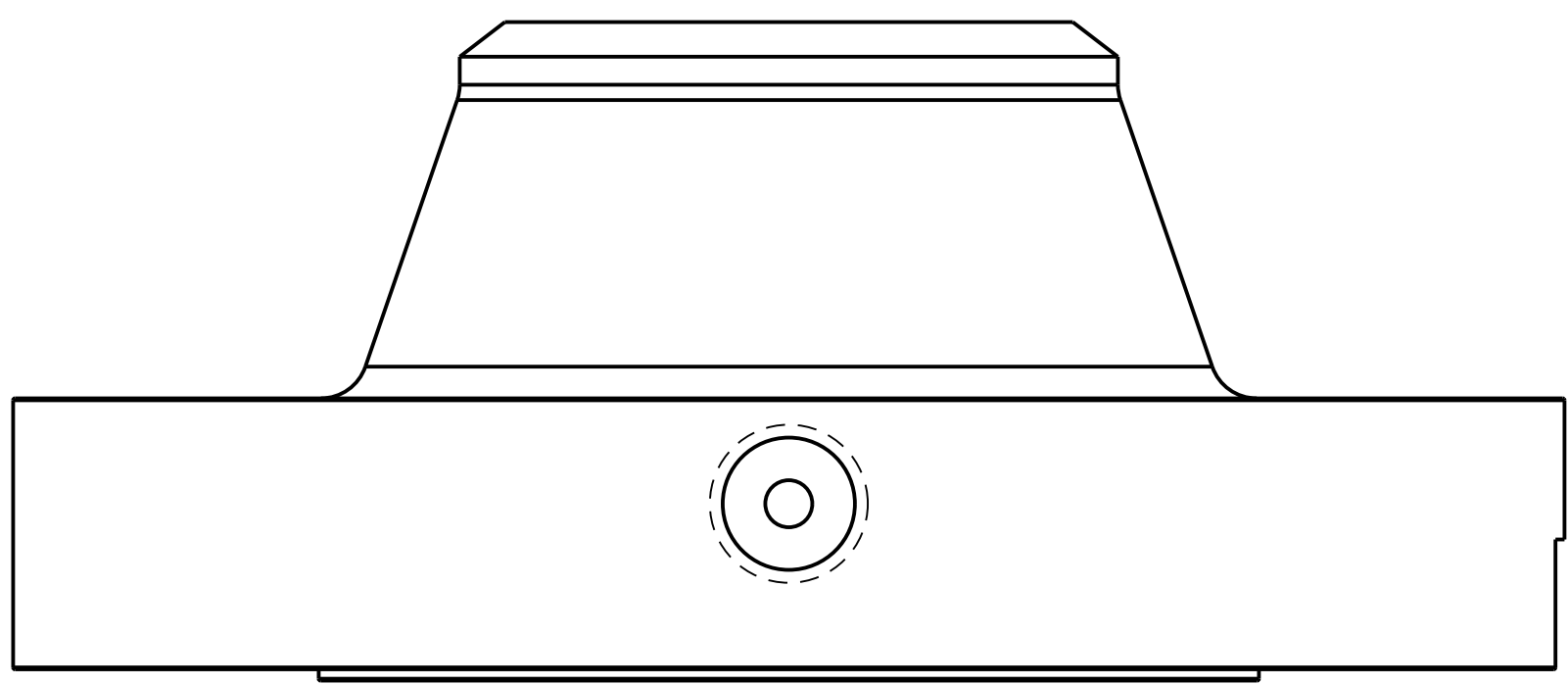
3RD ANGLE  SIZE D SCALE NTS

EMERSON

TITLE
**ROSEMOUNT 1496
TYPE I DRAWING**

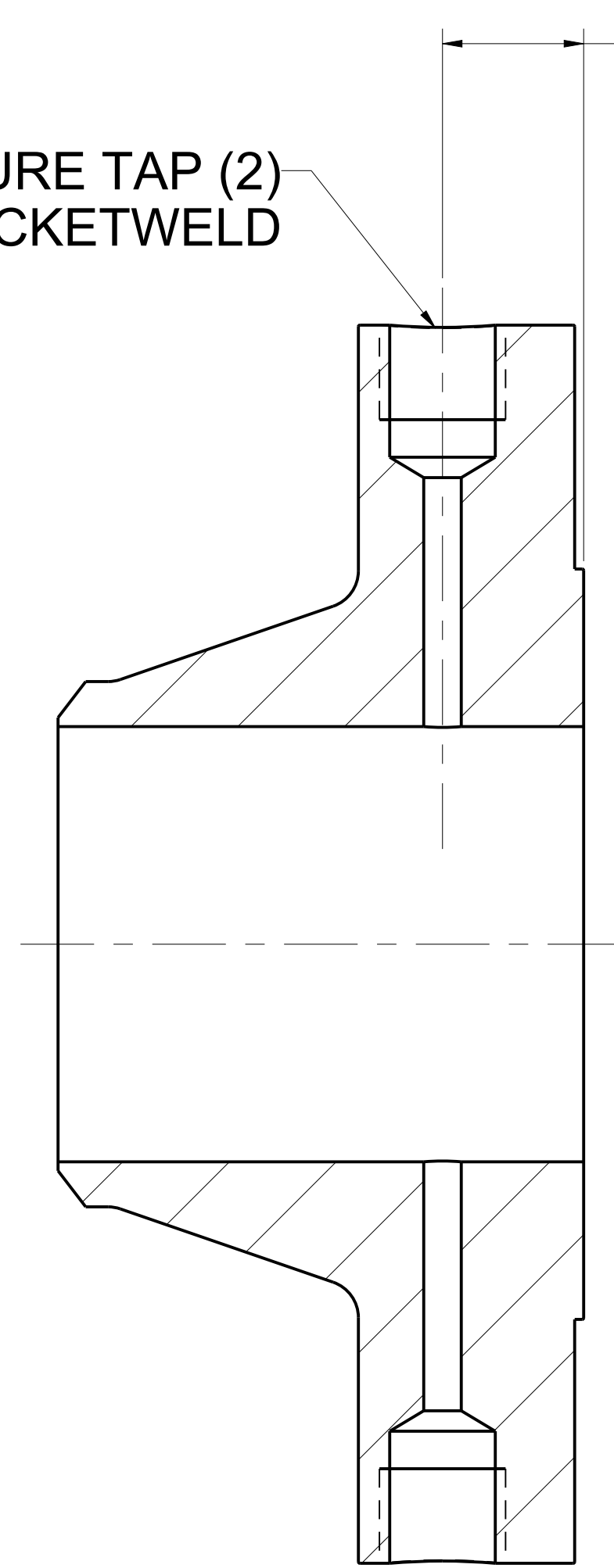
DR. M. Hering 10/01/18 DRAWING NO.
APP'D D. Kalfke 10/25/18 **01496-1001**

CAD MAINTAINED (PRO/E) SHEET 4 OF 10

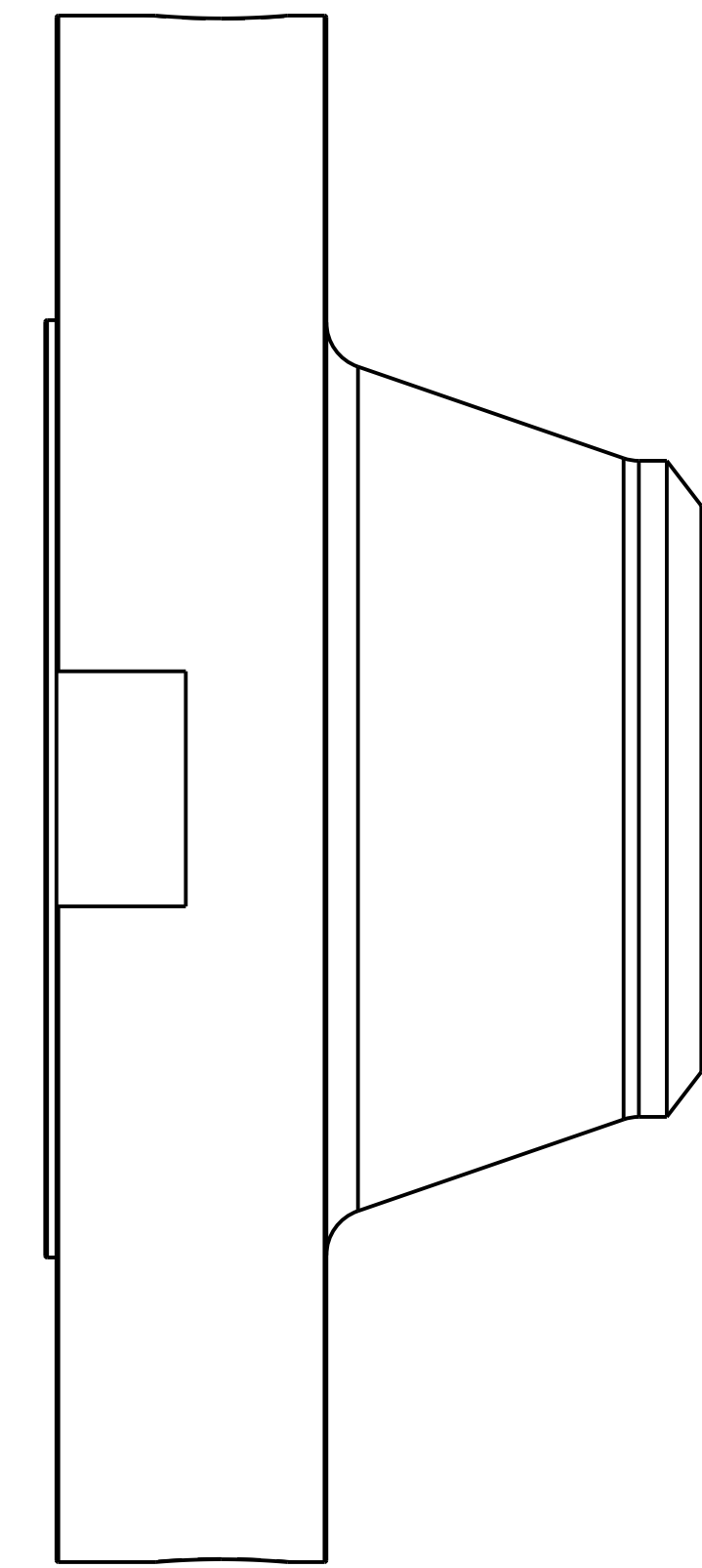
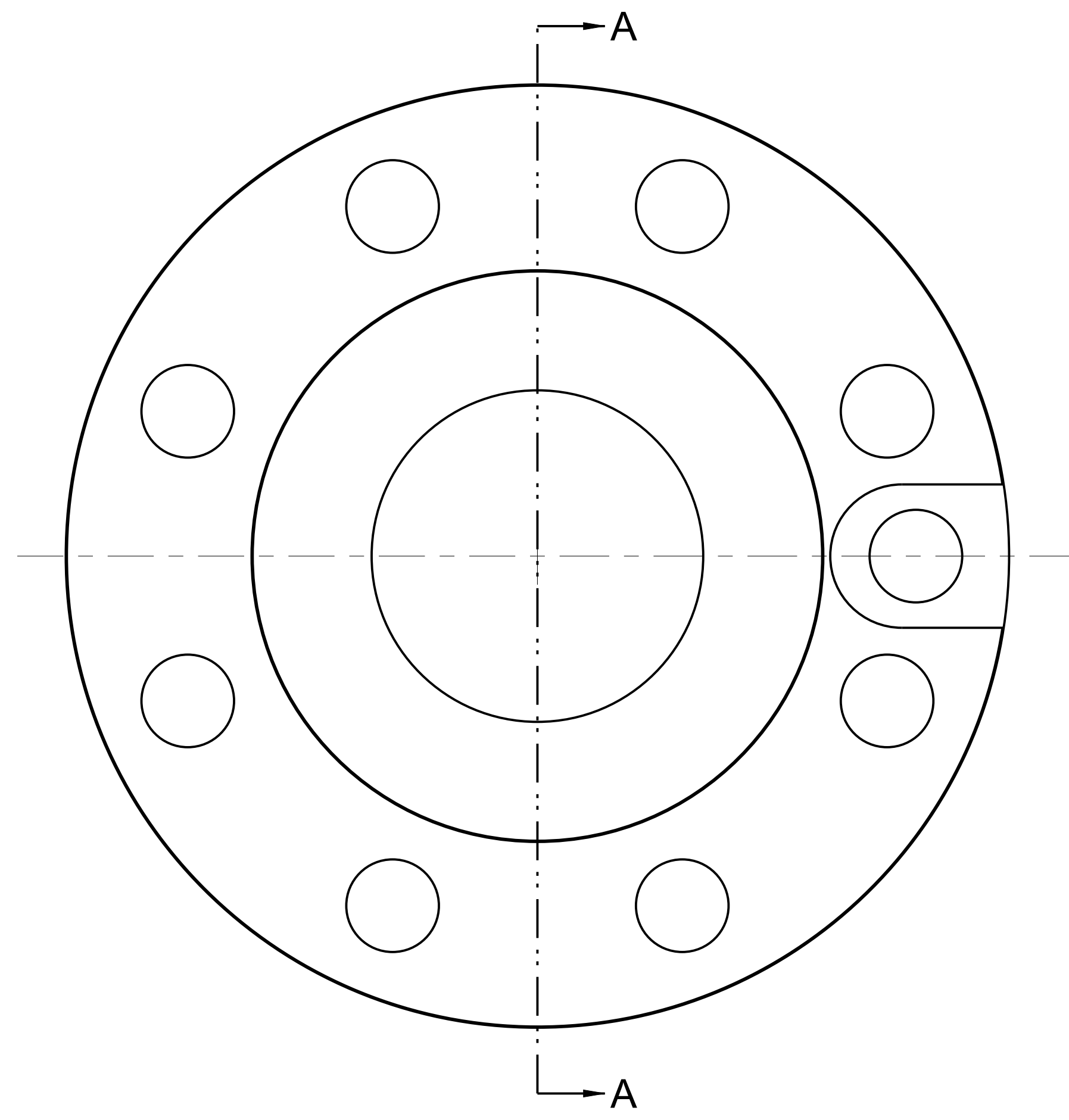


ORIFICE FLANGE UNION
 RAISED FACE, WELDNECK
 ASME B16.36 (1496WN)
 EN-1092-1 (1496DN)

0.94 [23,9] (.06 [1,5] FLAT GASKET)
 0.88 [22,3] (.13 [3,2] SPIRAL WOUND GASKET)
 1/2" (DN15) PRESSURE TAP (2)
 NPT THREAD OR SOCKETWELD



SECTION A-A



©2015 ROSEMOUNT, INC.
 ROSEMOUNT, INC. ACCEPTS NO
 LIABILITY FOR ERRORS OR OMISSIONS IN
 THESE DRAWINGS. ALL RIGHTS RESERVED.
 ROSEMOUNT ENGINEERING
 SPECIFICATIONS.
 UNIT NOTES IN INCHES (mm).

REFERENCE ROSEMOUNT
 PRODUCT SPECIFICATIONS.
 CLICK HERE

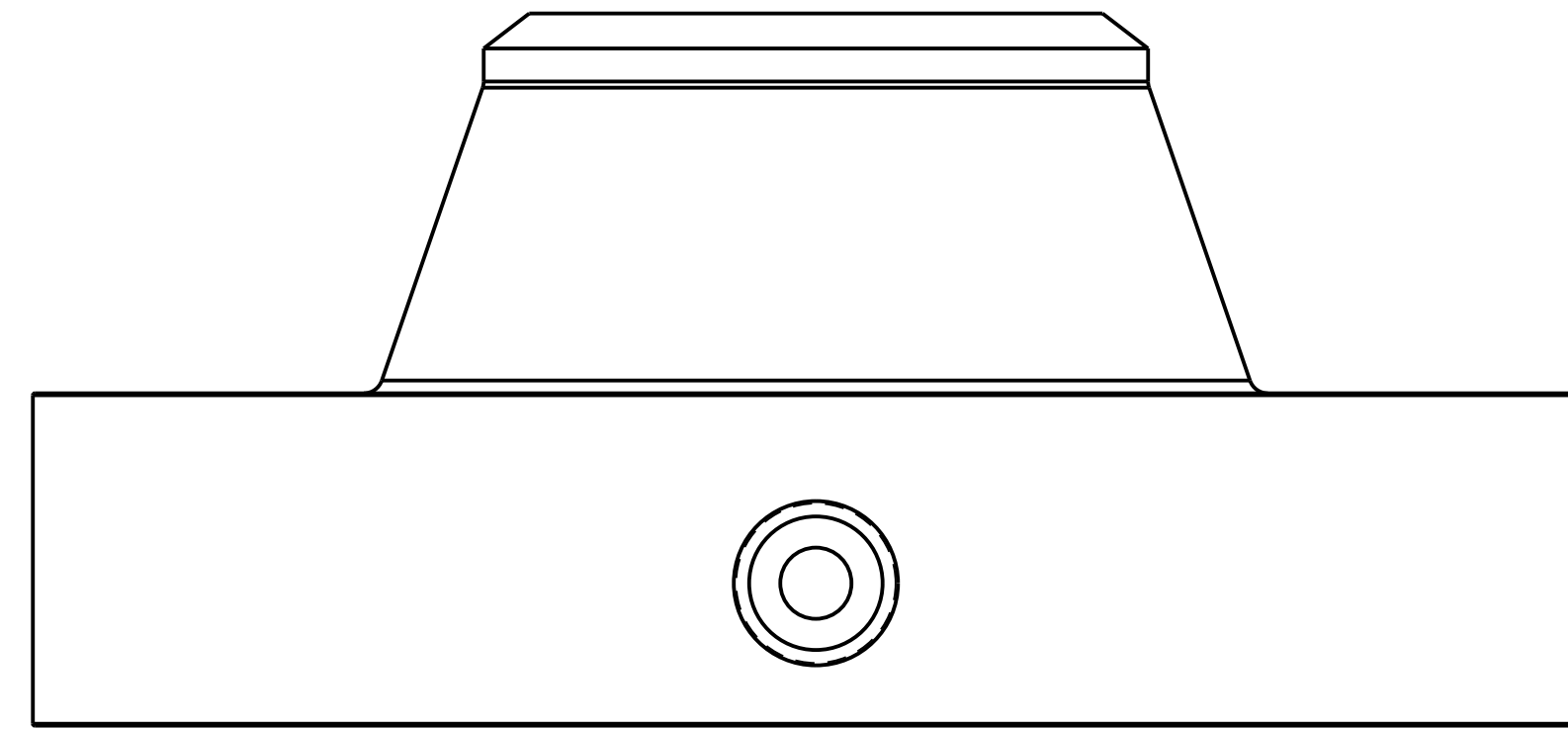
3RD ANGLE SIZE D SCALE NTS

EMERSON

TITLE
**ROSEMOUNT 1496
 TYPE I DRAWING**

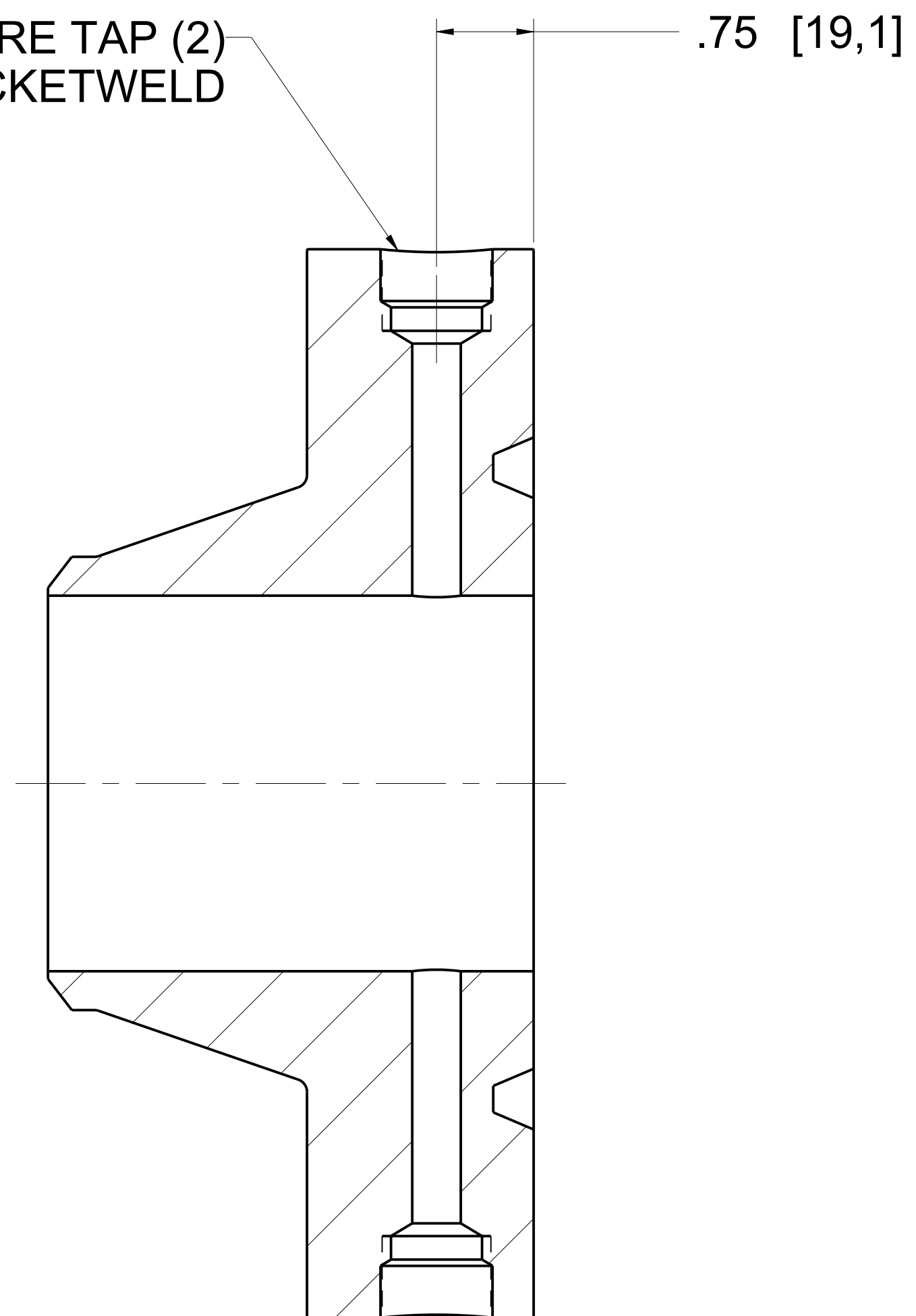
DR. M. Hering 10/01/18 DRAWING NO.
 APP'D D. Kalfke 10/25/18 **01496-1001**

CAD MAINTAINED (PRO/E) SHEET 5 OF 10

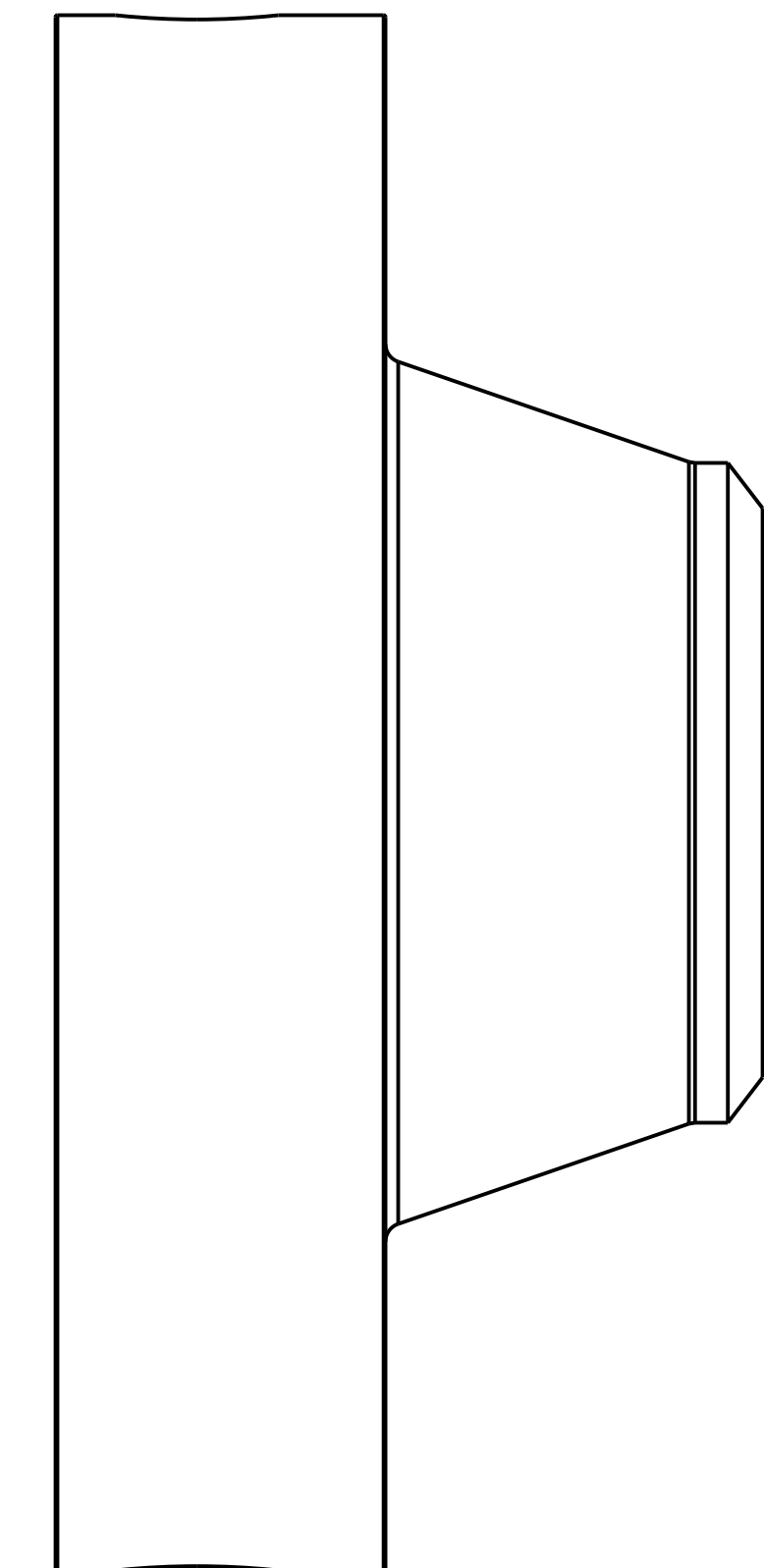
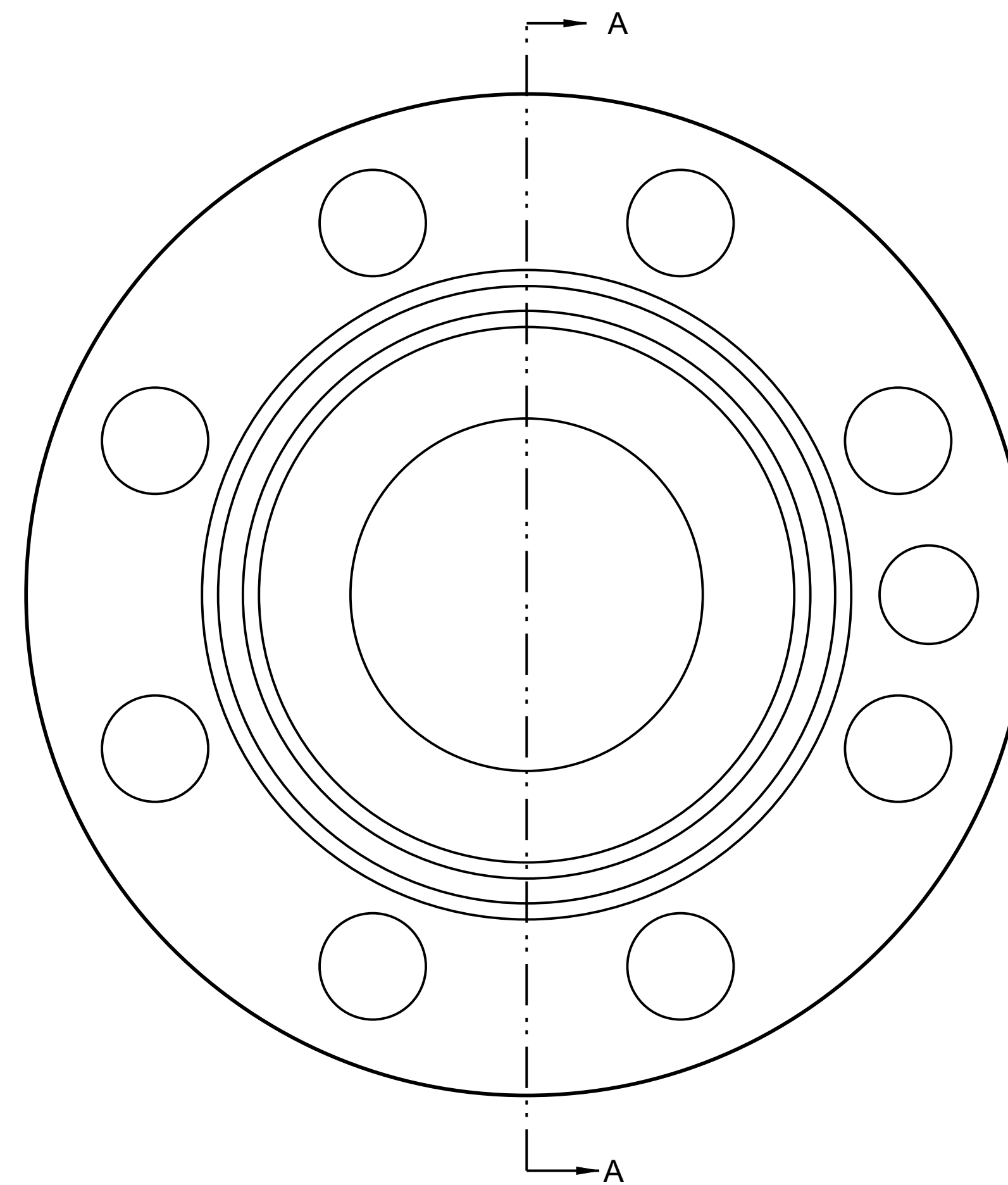


ORIFICE FLANGE UNION
RING JOINT, WELDNECK
ASME B16.36 (1496RJ)

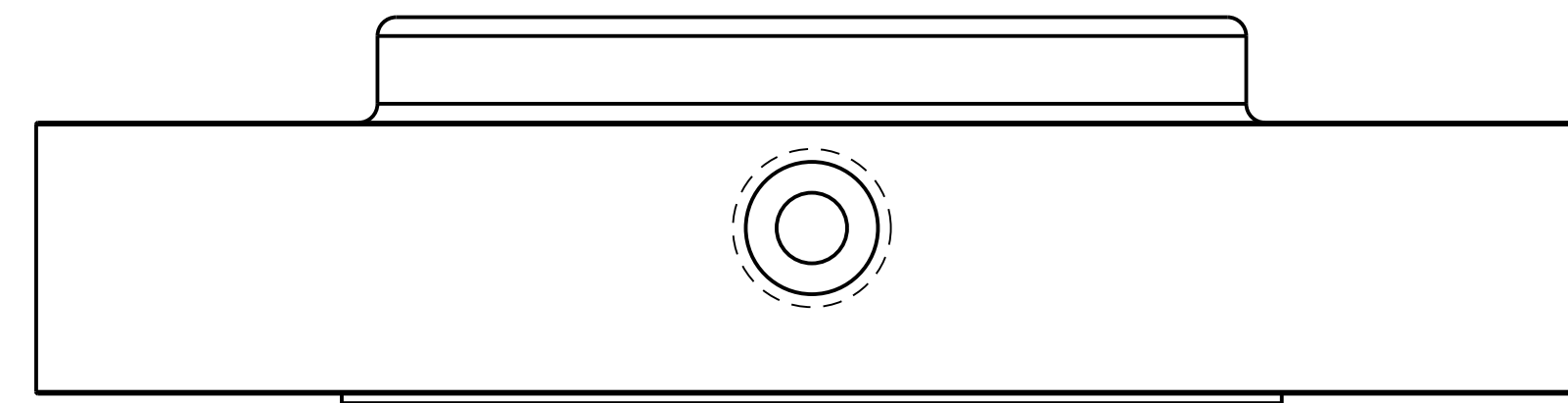
1/2" (DN15) PRESSURE TAP (2)
NPT THREAD OR SOCKETWELD



SECTION A-A



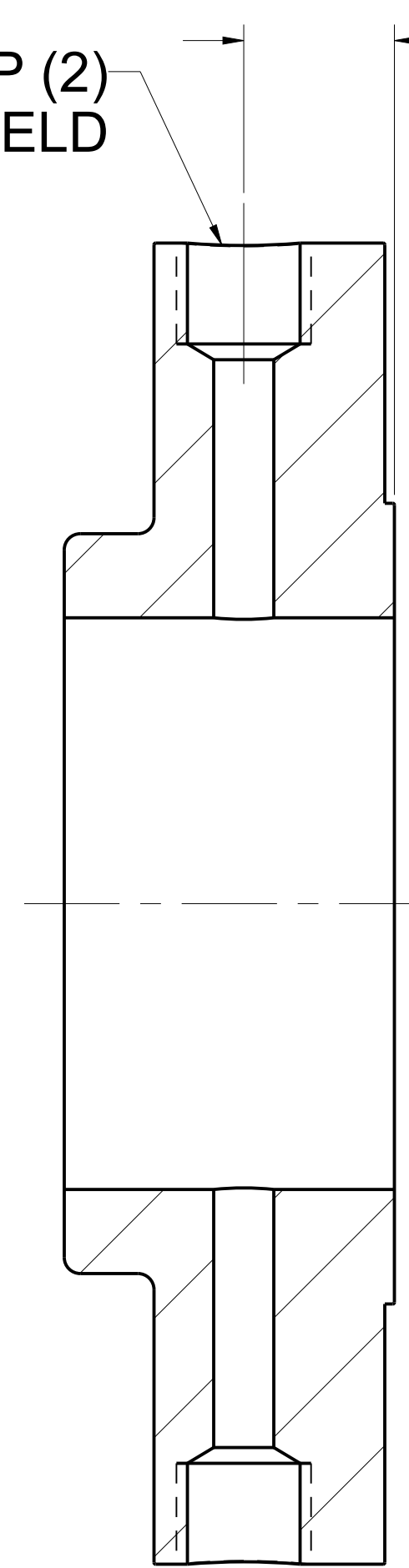
©2015 ROSEMOUNT, INC. ROSEMOUNT, INC. CLAIMS THESE DRAWINGS ARE MADE IN ACCORDANCE WITH ROSEMOUNT ENGINEERING SPECIFICATIONS. UNIT NOTES IN INCHES (mm). REFERENCE ROSEMOUNT PRODUCT SPECIFICATIONS. CLICK HERE	3RD ANGLE	SIZE D	SCALE NTS
	TITLE ROSEMOUNT 1496 TYPE I DRAWING		
	DR. M. Hering 10/01/18	DRAWING NO.	01496-1001
APP'D D. Kaltke 10/25/18	CAD MAINTAINED (PRO/E)		
			SHEET 6 OF 10



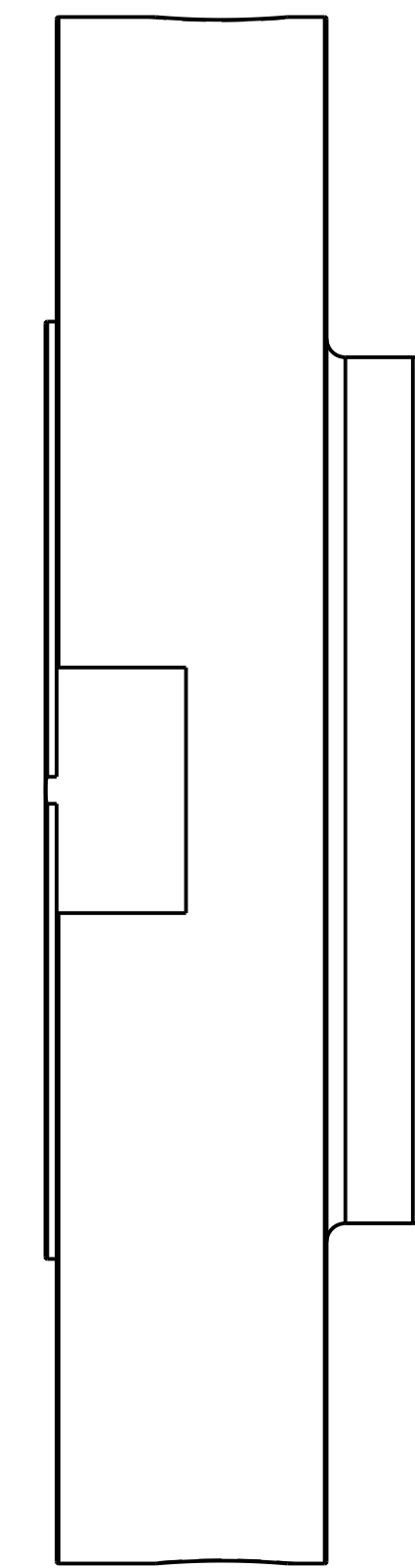
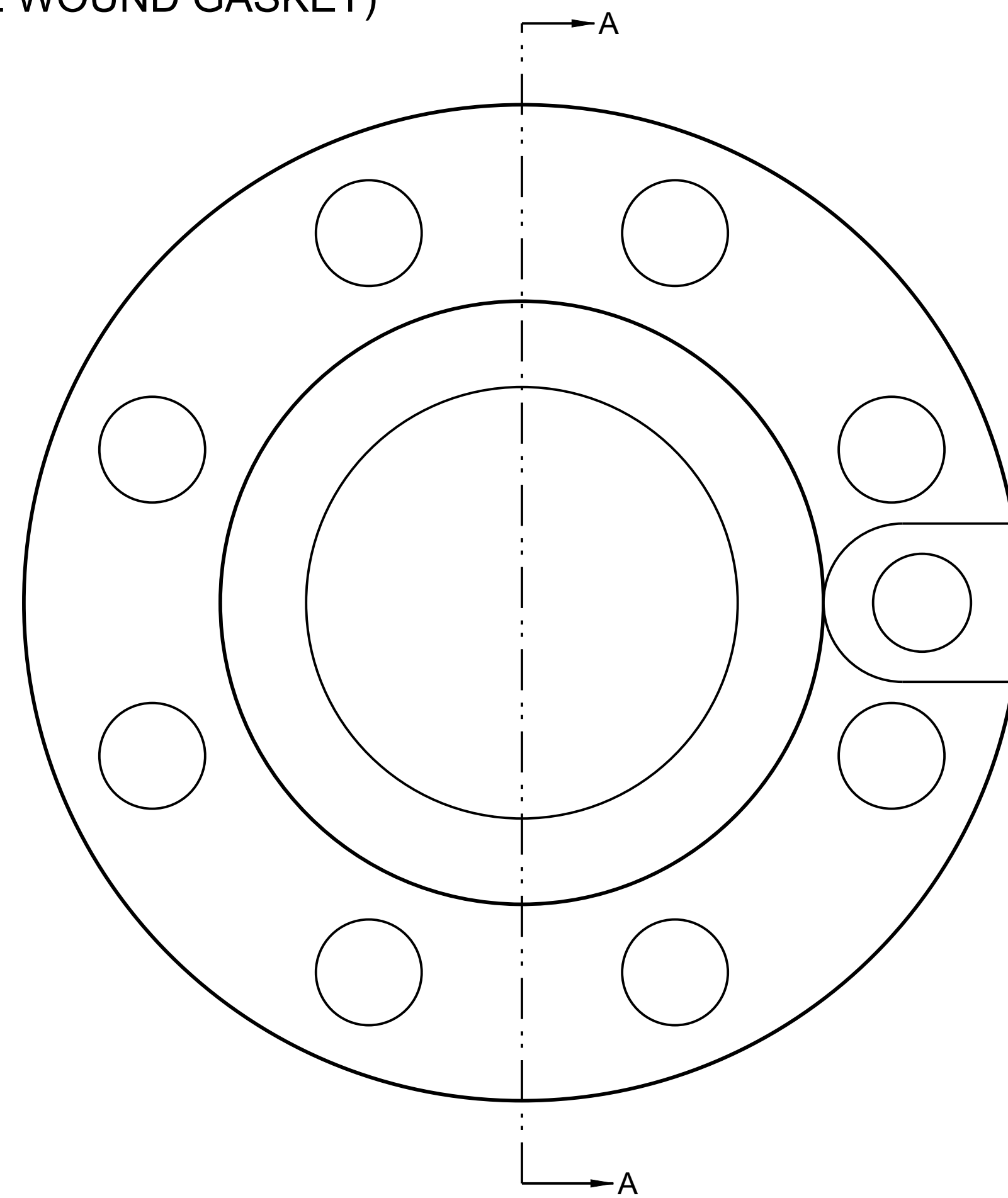
ORIFICE FLANGE UNION
 RAISED FACE, SLIP-ON
 ASME B16.36 (1496SO)

1/2" (DN15) PRESSURE TAP (2)
 NPT THREAD OR SOCKETWELD

0.94 [23,9] (.06 [1,5] FLAT GASKET)
 0.88 [22,3] (.13 [3,2] SPIRAL WOUND GASKET)

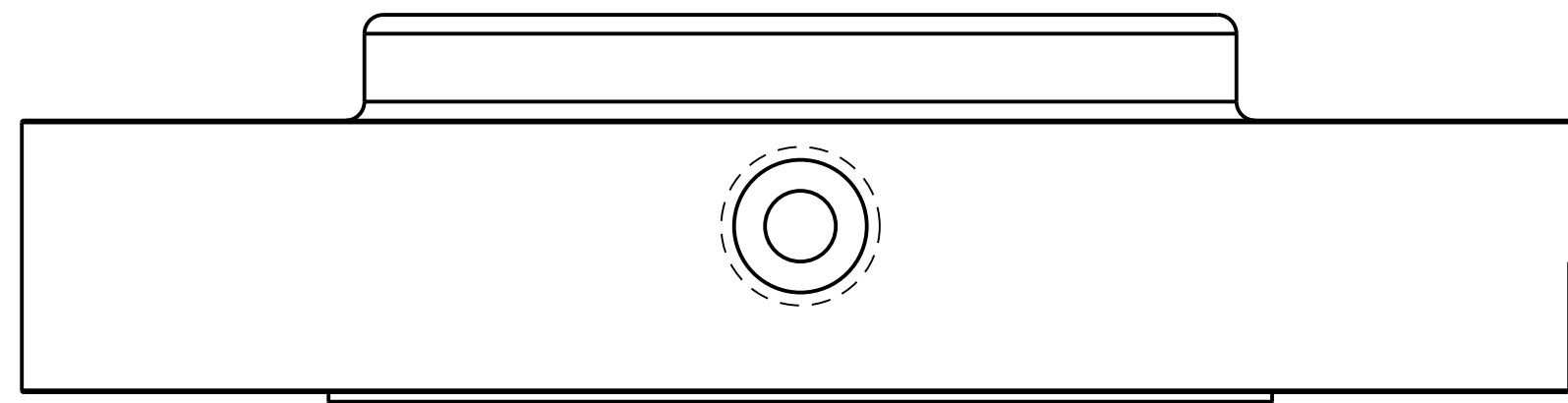


SECTION A-A



©2015 ROSEMOUNT, INC.
 ALL RIGHTS RESERVED.
 THIS DRAWING IS UNCLASSIFIED
 IN ACCORDANCE WITH
 ROSEMOUNT ENGINEERING
 SPECIFICATIONS.
 UNIT NOTES IN INCHES (mm).
 REFERENCE ROSEMOUNT
 PRODUCT SPECIFICATIONS.
 CLICK HERE

		3RD ANGLE		SIZE D	SCALE NTS
ROSEMOUNT 1496 TYPE I DRAWING					
DR.	M. Hering	10/01/18	DRAWING NO.		
APP'D	D. Kalfke	10/25/18	01496-1001		
CAD MAINTAINED: (PRO/E)					SHEET 7 OF 10

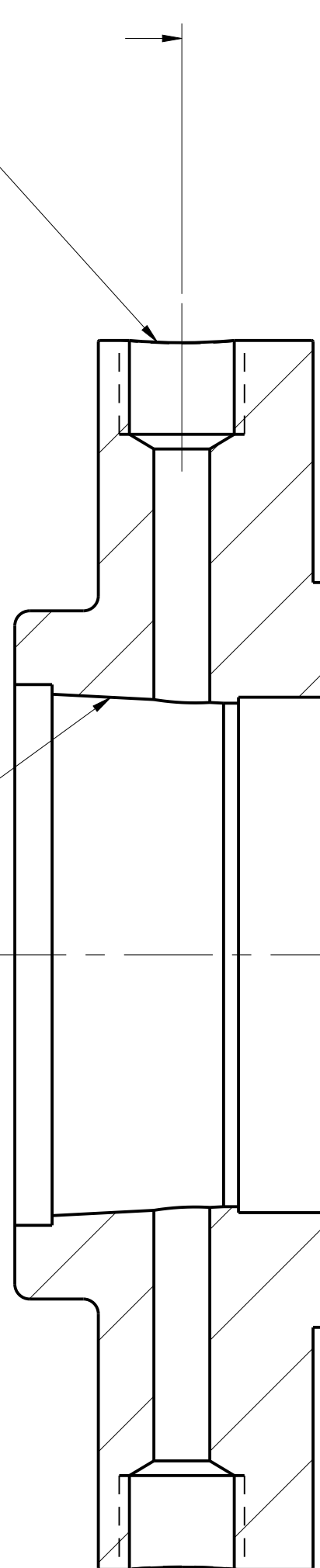


ORIFICE FLANGE UNION
RAISED FACE, THREADED
ASME B16.36 (1496TH)

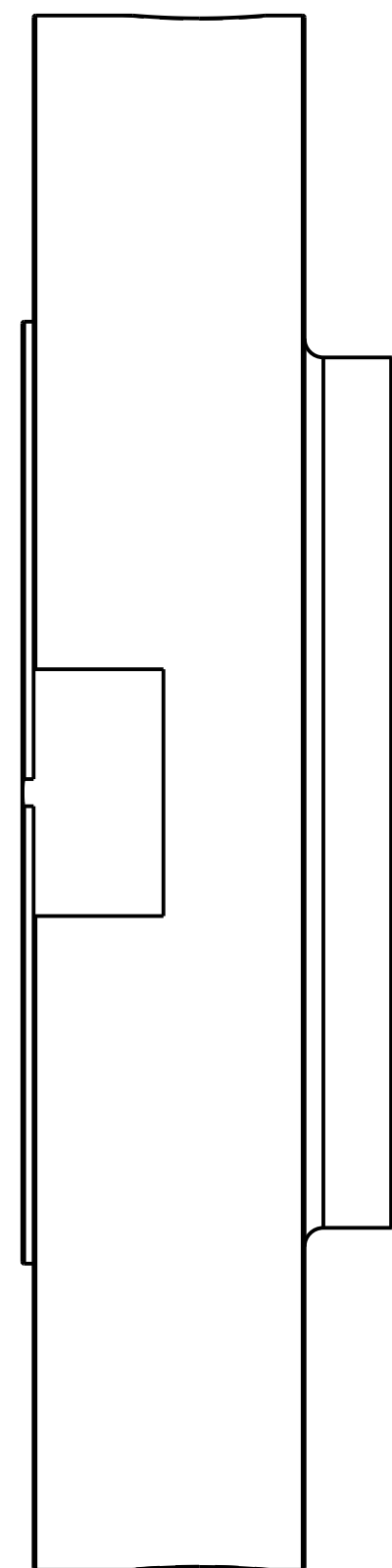
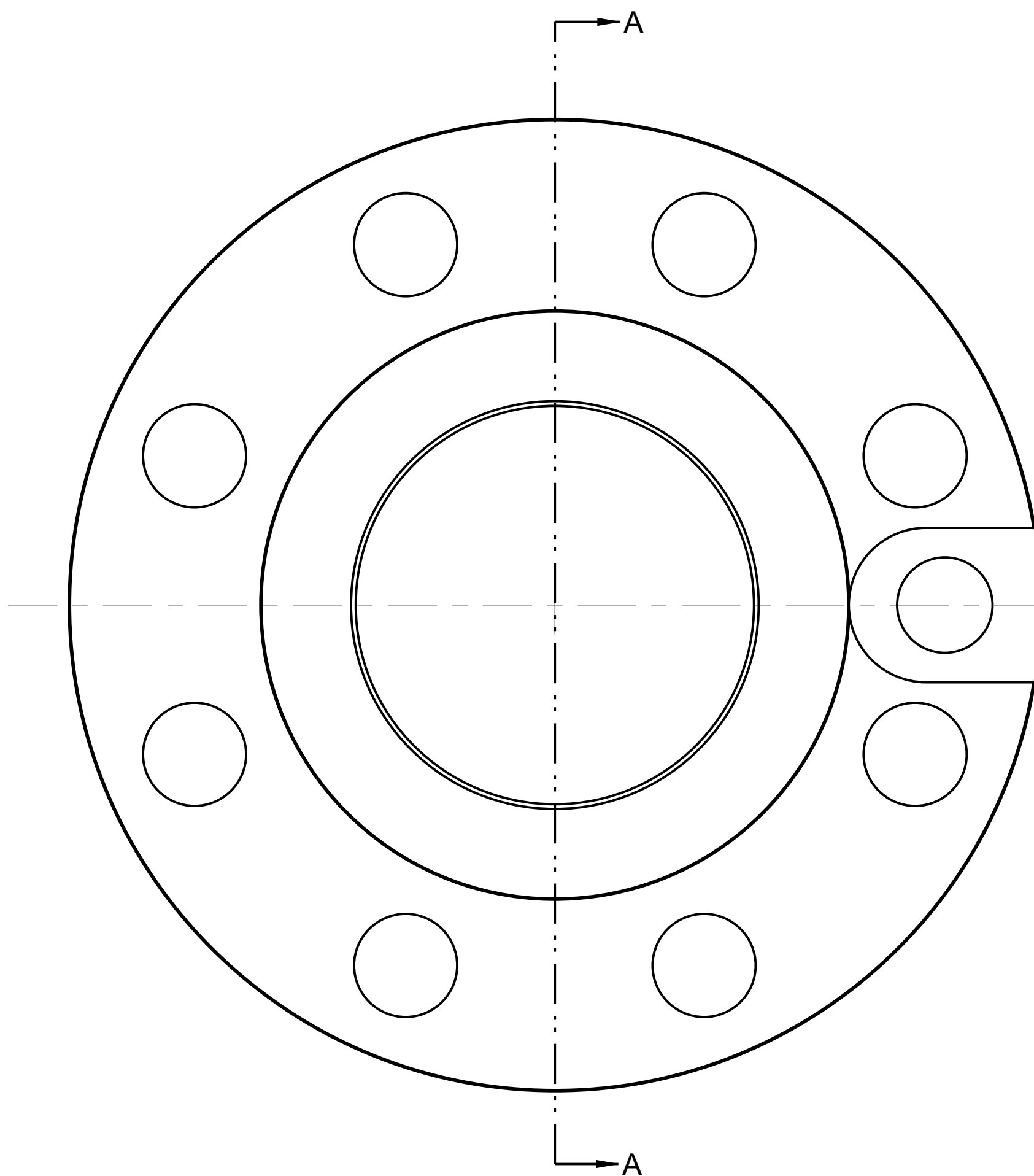
0.94 [23,9] (.06 [1,5] FLAT GASKET)
0.88 [22,3] (.13 [3,2] SPIRAL WOUND GASKET)

1/2" (DN15) PRESSURE TAP (2)
NPT THREAD OR SOCKETWELD

NPT THREAD

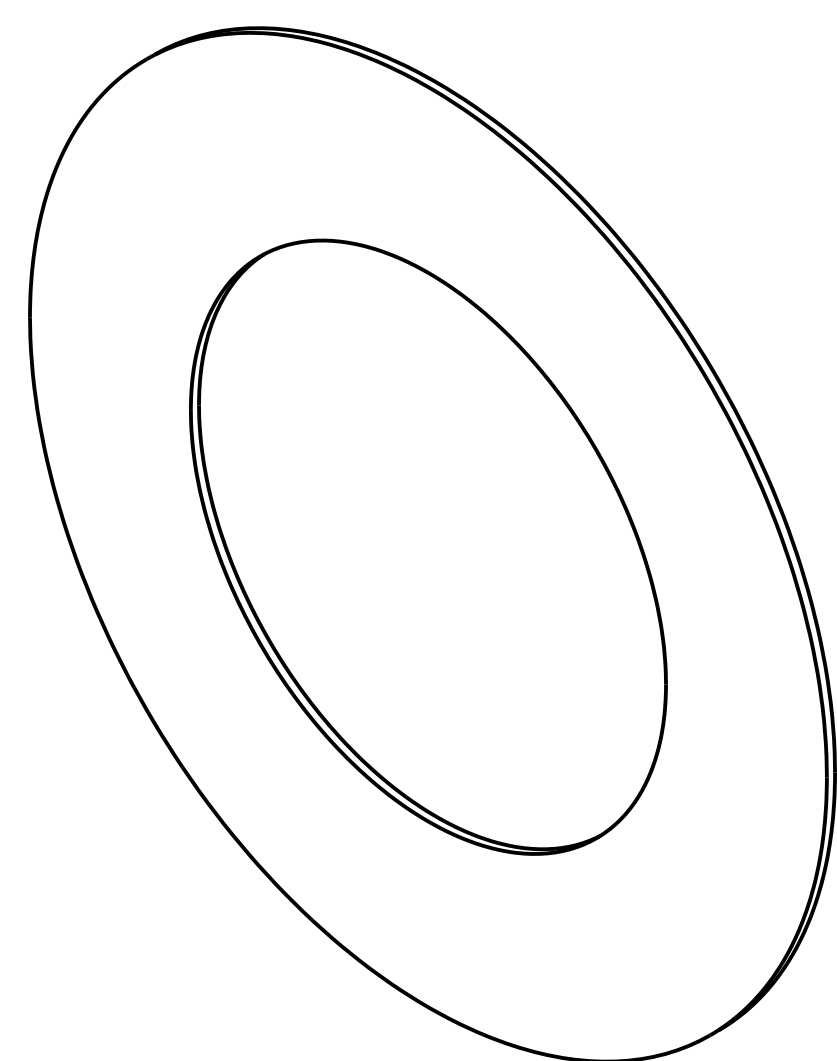


SECTION A-A

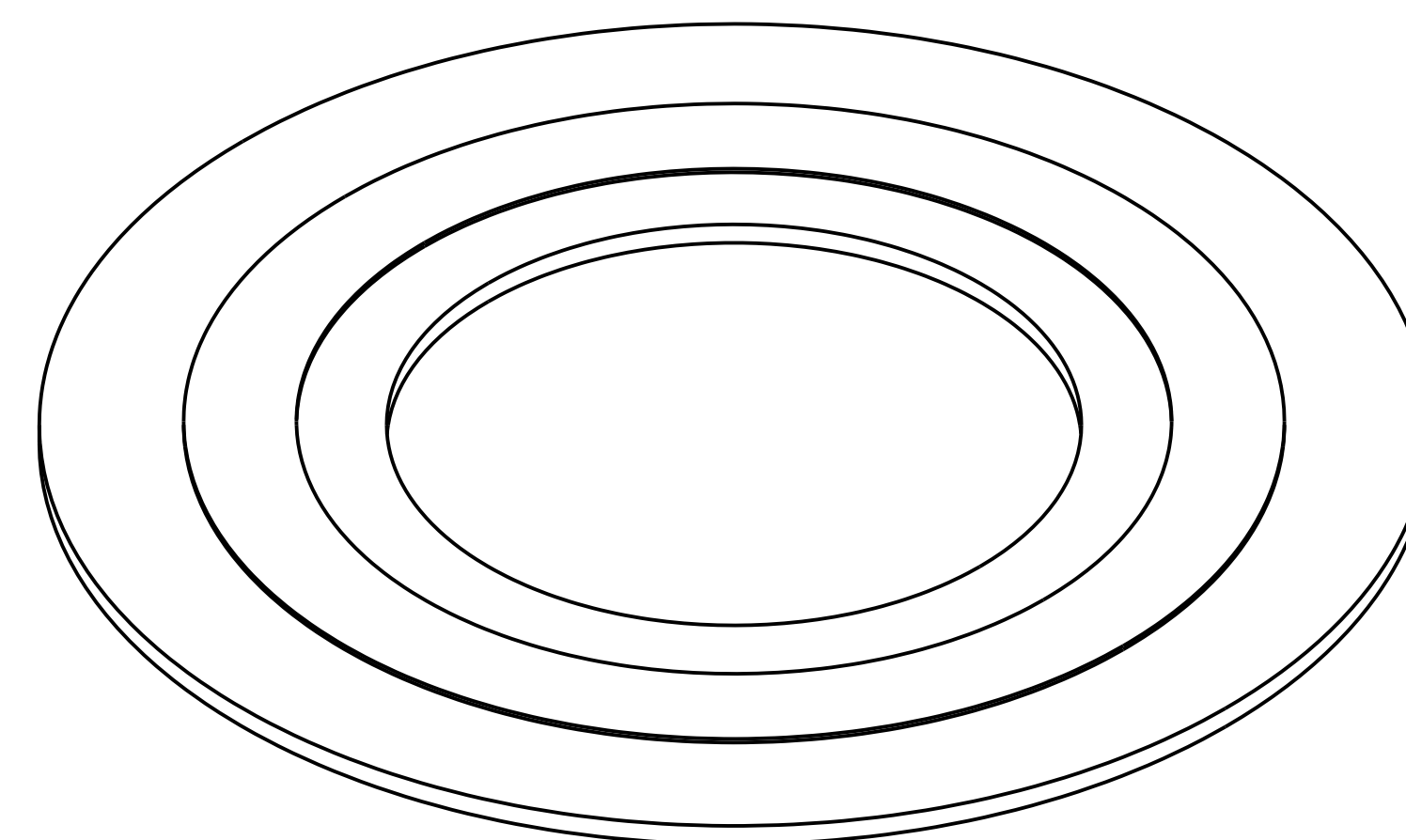
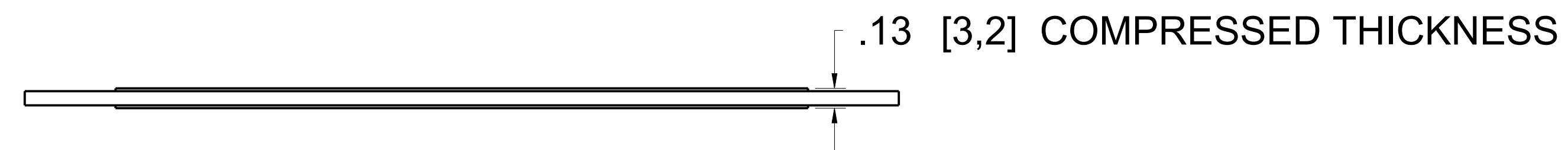


©2015 ROSEMOUNT, INC. ROSEMOUNT AND ALL OTHER TRADENAMES ARE REGISTERED IN THE U.S. PATENT AND TRADEMARK OFFICE AND ARE USED HEREIN IN ACCORDANCE WITH ROSEMOUNT ENGINEERING SPECIFICATIONS. UNIT NOTES IN INCHES (mm). REFERENCE ROSEMOUNT PRODUCT SPECIFICATIONS FOR PRODUCT SPECIFICATIONS. CLICK HERE	3RD ANGLE	SIZE D	SCALE NTS
	TITLE ROSEMOUNT 1496 TYPE I DRAWING		
	DR. M. Hering 10/01/18	DRAWING NO.	01496-1001
APP'D D. Kalfke 10/25/18	CAD MAINTAINED (PRO/E) SHEET 8 OF 10		

GASKET TYPES



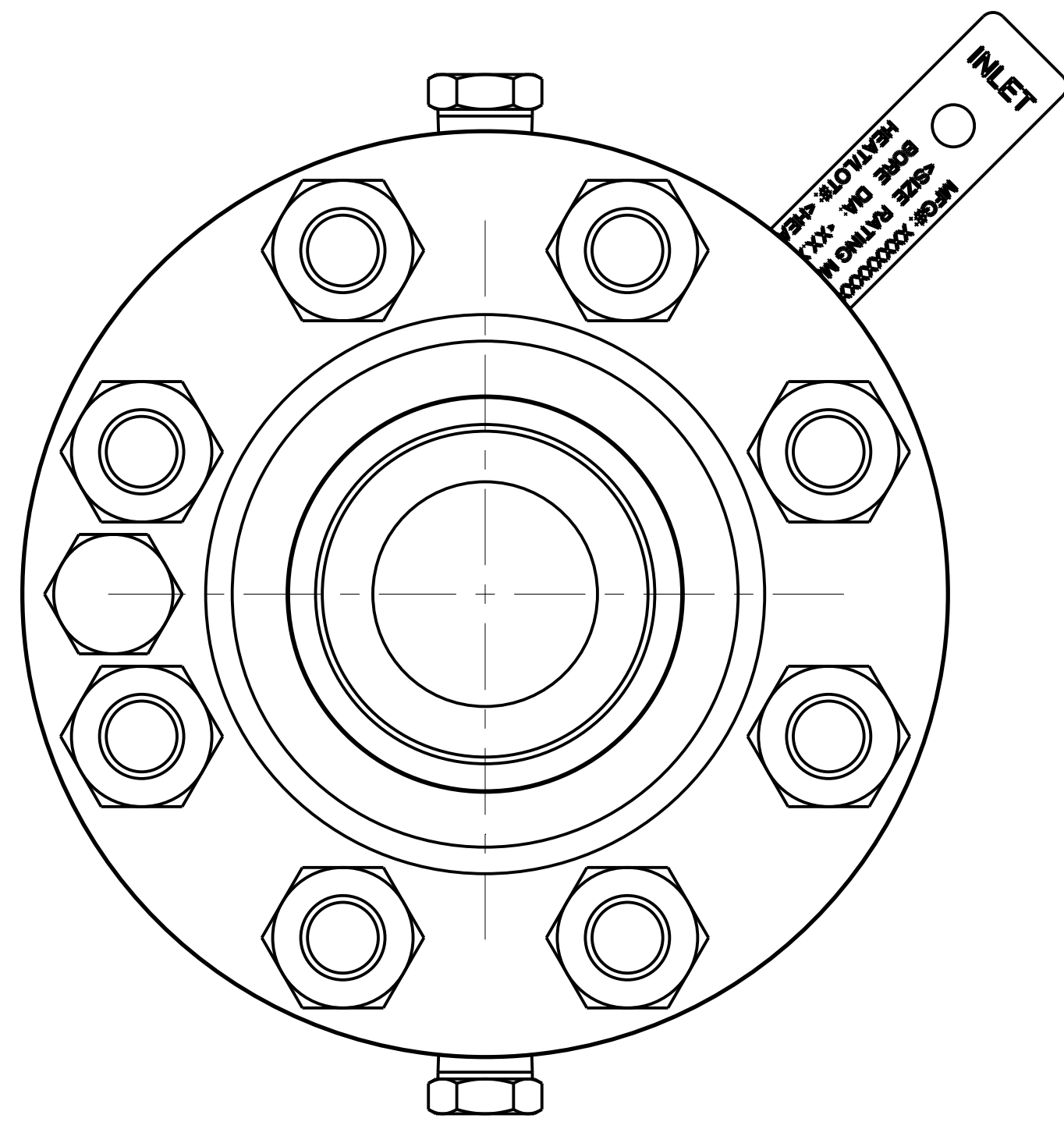
FLAT GASKET
STANDARD FOR RAISED FACE FLANGES
IN CLASS 300 AND PN10 - PN40



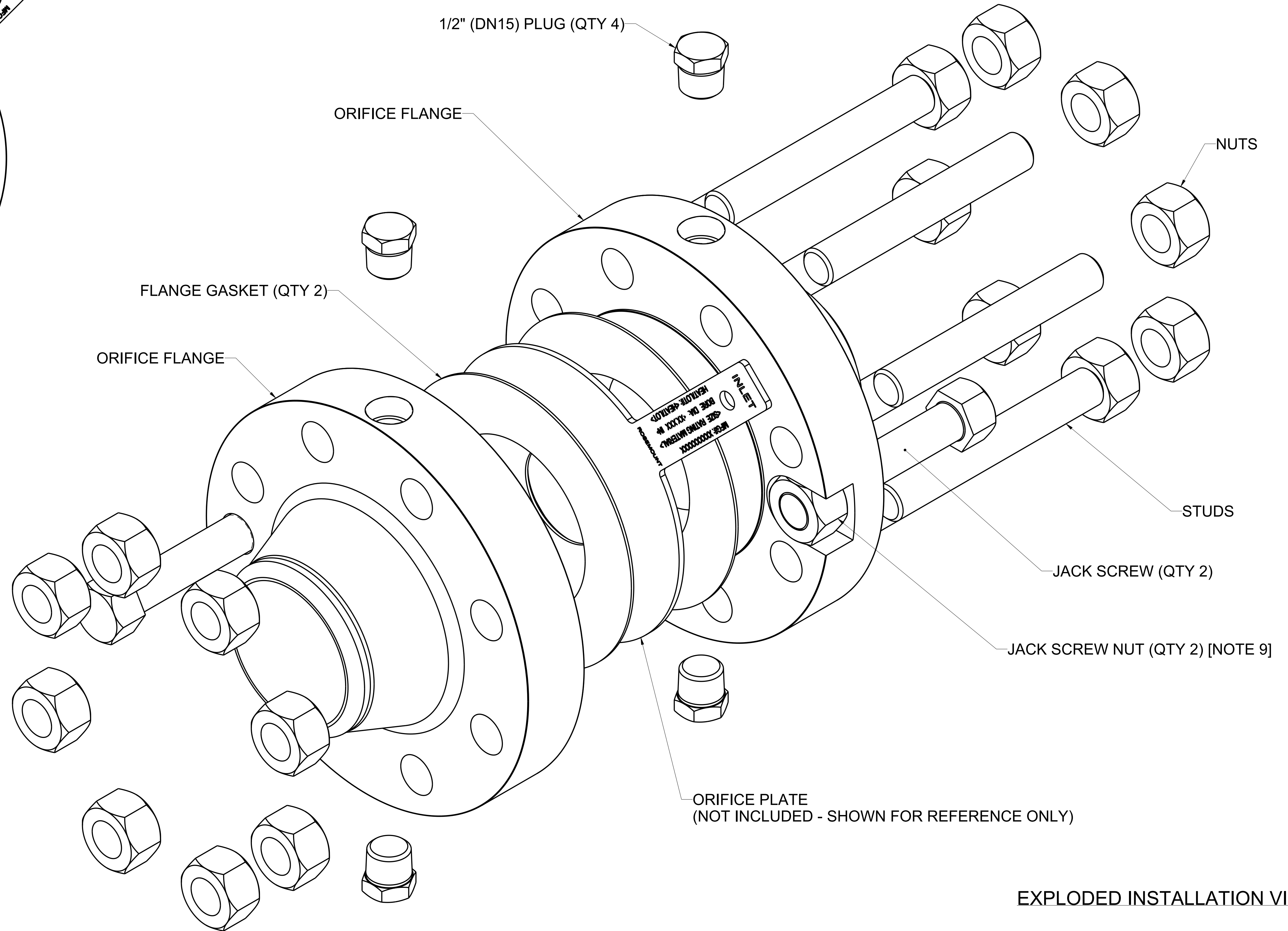
SPIRAL WOUND GASKET WITH INNER RING
STANDARD FOR RAISED FACE FLANGES
IN CLASS 600 TO 2500 AND PN63 - PN100

(OPTIONAL FOR CLASS 300 AND PN10 -PN40
BY USING THE G1 OPTION CODE)

<small>©2015 ROSEMOUNT, INC. ROSEMOUNT ACCEPTS NO LIABILITY IN THESE DRAWINGS OR SPECIFICATIONS. ROSEMOUNT ENGINEERING SPECIFICATIONS. UNIT NOTES IN INCHES (mm). REFERENCE ROSEMOUNT PRODUCT SPECIFICATIONS. CLICK HERE</small>		<small>3RD ANGLE</small>	<small>SIZE D</small>	<small>SCALE NTS</small>
	ROSEMOUNT 1496 TYPE I DRAWING			
	<small>DR.</small> M. Hering <small>DRAWING NO.</small>	01496-1001		
	<small>APP'D</small> D. Kalfke <small>DATE</small> 10/25/18	<small>CAD MAINTAINED (PRO/EI)</small> <small>SHEET 9 OF 10</small>		



TYPICAL INSTALLATION



EXPLODED INSTALLATION VIEW

©2015 ROSEMOUNT, INC. ROSEMOUNT, INC. ACCEPTS LIABILITY FOR THE ACCURACY OF THIS DRAWING IN ACCORDANCE WITH ROSEMOUNT ENGINEERING SPECIFICATIONS. UNIT NOTES IN INCHES (mm). REFERENCE ROSEMOUNT PRODUCT SPECIFICATIONS FOR PRODUCT SPECIFICATIONS. CLICK HERE	3RD ANGLE	SIZE D	SCALE NTS
	EMERSON		
	TITLE ROSEMOUNT 1496 TYPE I DRAWING		
	DR. M. Hering 10/01/18	DRAWING NO.	01496-1001
APP'D D. Kaitke 10/25/18			SHEET 10 OF 10
CAD MAINTAINED (I/PRO/E)			