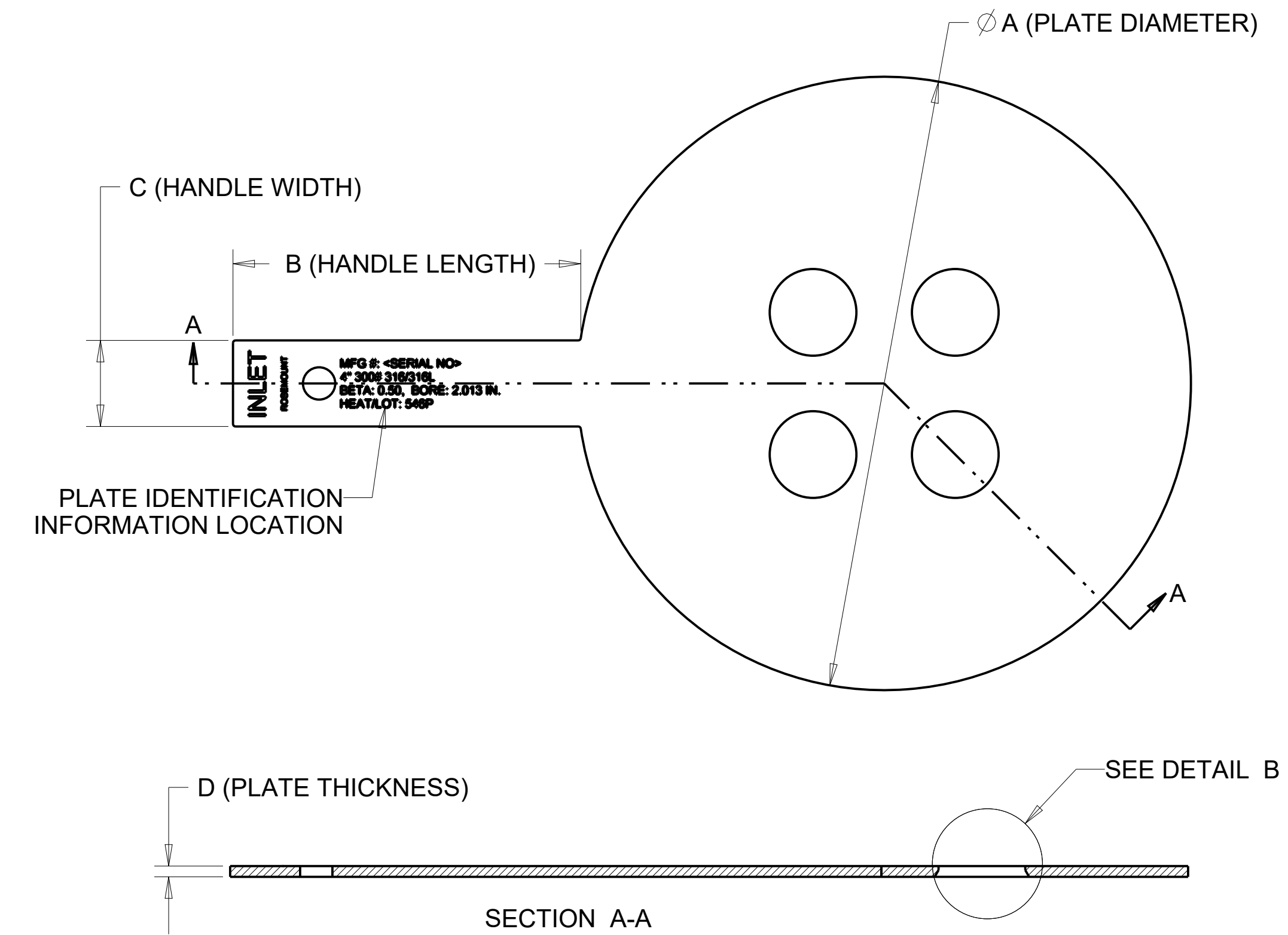
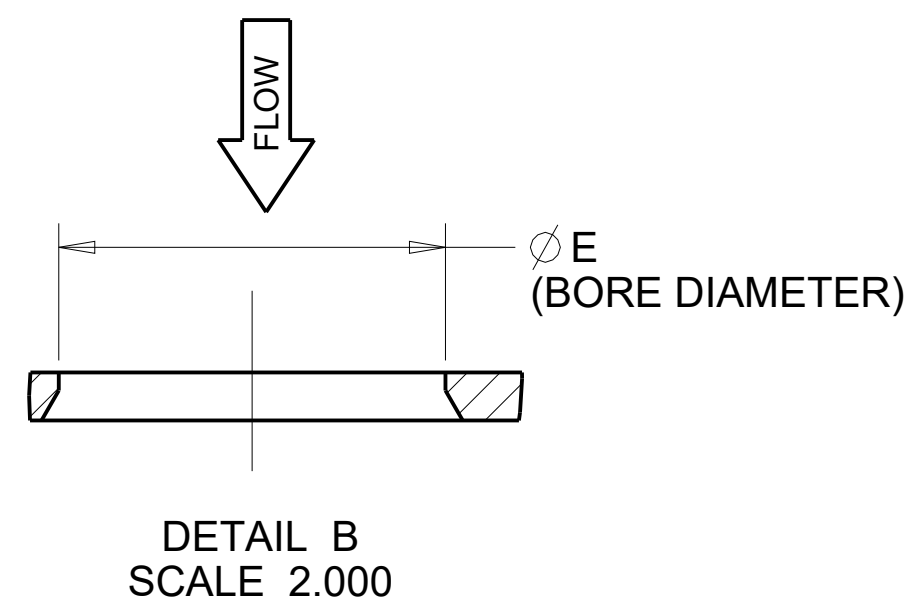


REVISION TABLE			
REVISION	ECO NO.	APP'D	DATE
AJ	DS11056119	NK	06/05/20
DESCRIPTION			
REMOVED EAC MARK. ADDED DIMS IN MM. CORRECTED TABLE 1.			

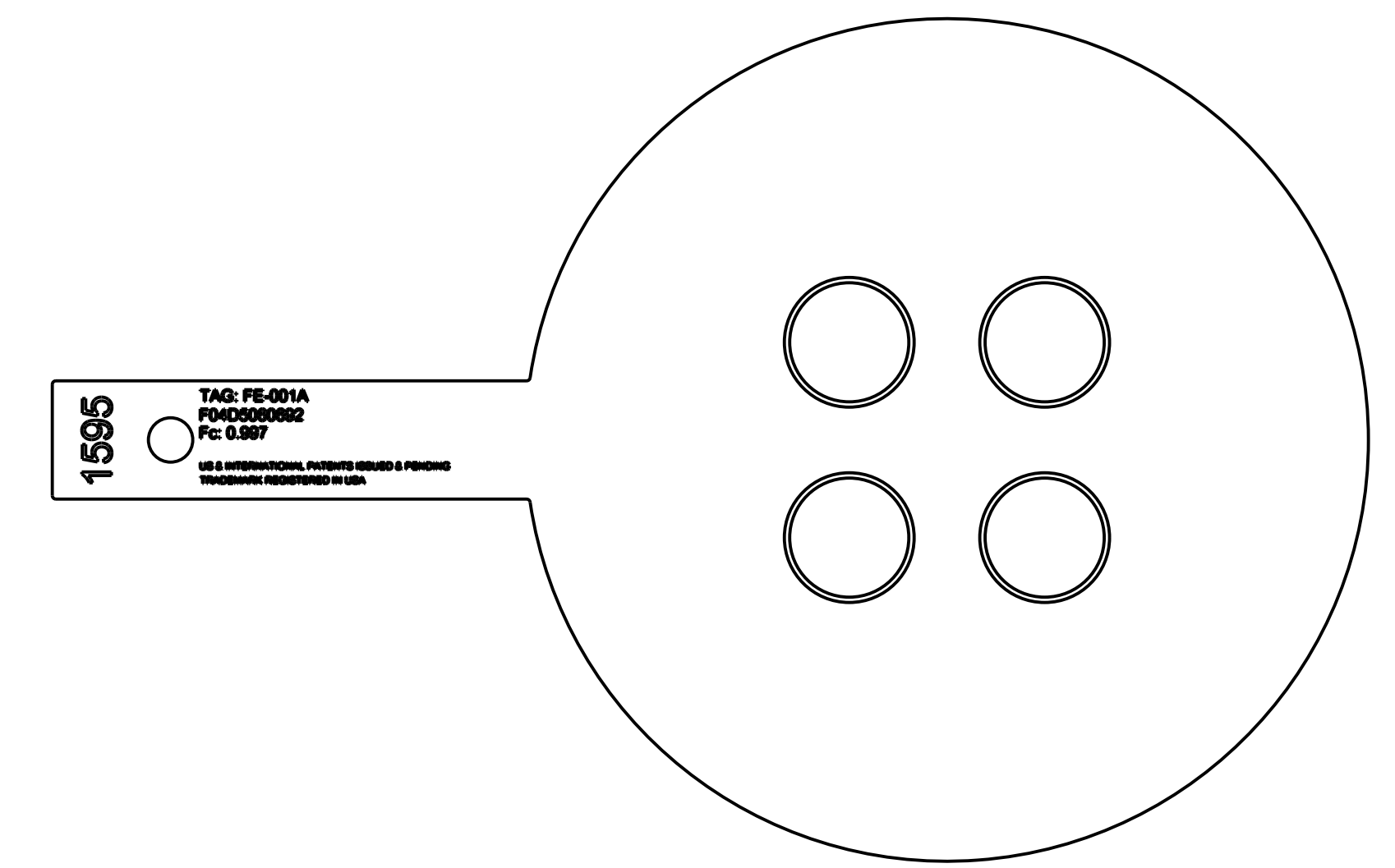
NOTES:

- ROSEMOUNT INC. CERTIFIES THIS DRAWING IS IN ACCORDANCE WITH ROSEMOUNT ENGINEERING SPECIFICATIONS AND ACCURATELY REPRESENTS THE EQUIPMENT FURNISHED.
- FOR ACTUAL RECOMMENDED LOCATION AND ORIENTATION OF ORIFICE PLATES REFER TO INSTALLATION MANUAL 00809-0100-4828.
- FOR MODEL SELECTIONS AND OPTIONS REFER TO ROSEMOUNT PRODUCT DATA SHEET 00813-0100-4828.
- MODEL 1595 MAXIMUM TEMPERATURE IS 1200° F (648° C) FOR 316 AND ALLOY C-276, AND 900° F (482° C) FOR ALLOY 400. OBSERVE GASKET MATERIAL LIMITATIONS.
- AVAILABLE MATERIALS: 316 STAINLESS STEEL, ALLOY 400 AND ALLOY C-276.
- DELETED



MATERIAL	PRESSURE @ AMBIENT	PRESSURE @ MAX TEMP	MDMT	PRESSURE CLASS	DESIGN CODE
ASTM A240 GR 316/316L SS	6250 PSIG (430 BAR-G)	1715 PSIG @ 1200° F (118 BAR-G @ 648° C)	-325° F (-198° C)	ASME B16.5 CL 150-2500	ASME B31.3
ASTM B575 GR N10276 (ALLOY C276)					
ASTM B127 GR N04400 (ALLOY 400)					

LINE SIZE	PLATE DIAMETER Ø A (BY ASME B16.36/B16.5 FLANGE CLASS)					HANDLE LENGTH B	HANDLE WIDTH C	THICKNESS D	BORE DIAMETER (Ø E)				
	CL150	CL300	CL600	CL900	CL1500				CL2500	0.20 BETA	0.40 BETA	0.50 BETA	0.60 BETA
NPS 2 (DN50)	4.125 [104,8]	4.375 [111,1]	5.625 [142,9]	0.000 [0]	5.750 [146,1]	4.000 [101,6]	1.000 [25,4]	0.125 [3,2]	0.207 [5,3]	0.413 [10,5]	0.517 [13,1]	0.620 [15,7]	N/A
NPS 3 (DN80)	5.375 [136,5]	5.875 [149,2]	6.625 [168,3]	6.875 [174,6]	7.750 [196,9]				0.307 [7,8]	0.614 [15,6]	0.767 [19,5]	N/A	0.997 [25,3]
NPS 4 (DN100)	6.875 [174,6]	7.125 [181]	7.625 [193,7]	8.125 [206,4]	8.250 [209,6]				0.403 [10,2]	0.805 [20,4]	1.007 [25,6]		1.309 [33,2]
NPS 6 (DN150)	8.750 [222,3]	9.875 [250,8]	10.500 [266,7]	11.375 [288,9]	11.125 [282,6]	6.000 [152,4]	1.500 [38,1]	0.250 [6,4]	0.607 [15,4]	1.213 [30,8]	1.516 [38,5]	N/A	1.971 [50,1]
NPS 8 (DN200)	11.000 [279,4]	12.125 [308]	12.625 [320,7]	14.125 [358,8]	13.875 [352,4]				0.798 [20,3]	1.596 [40,5]	1.995 [50,7]		2.594 [65,9]
NPS 10 (DN250)	13.375 [339,7]	14.250 [362]	15.750 [400,1]	17.125 [435]	17.125 [435]				1.002 [25,5]	2.004 [50,9]	2.505 [63,6]	3.257 [82,7]	
NPS 12 (DN300)	16.125 [409,6]	16.625 [422,3]	18.000 [457,2]	19.625 [498,5]	20.500 [520,7]	N/A	N/A	N/A	1.200 [30,5]	2.400 [61]	3.000 [76,2]	3.900 [99,1]	
NPS 14 (DN350)	17.750 [450,9]	19.125 [485,8]	19.375 [492,1]	N/A	N/A				1.312 [33,3]	2.625 [66,7]	3.281 [83,3]	4.265 [108,3]	
NPS 16 (DN400)	20.250 [514,4]	21.250 [539,8]	22.250 [565,2]						1.500 [38,1]	3.000 [76,2]	3.750 [95,3]	4.875 [123,8]	
NPS 18 (DN450)	21.500 [546,1]	23.375 [593,7]	24.000 [609,6]			1.688 [42,9]	3.375 [85,7]	4.219 [107,2]	5.485 [139,3]				
NPS 20 (DN500)	23.750 [603,3]	25.625 [650,9]	26.750 [679,5]	N/A	N/A	N/A	N/A	N/A	1.881 [47,8]	3.762 [95,6]	4.703 [119,5]	6.114 [155,3]	
NPS 24 (DN600)	28.125 [714,4]	30.375 [771,5]	31.000 [787,4]						2.262 [57,5]	4.525 [114,9]	5.656 [143,7]	7.353 [186,8]	



©2015 ROSEMOUNT INC. ROSEMOUNT INC. CERTIFIES THIS DRAWING AS ACCURATE IN ACCORDANCE WITH ROSEMOUNT ENGINEERING SPECIFICATIONS. UNIT NOTES IN INCHES (mm). REFERENCE ROSEMOUNT PRODUCT SPECIFICATIONS. CAD MAINTAINED. (PRO/E)

3RD ANGLE

EMERSON

TITLE: ROSEMOUNT 1595PxxxAx TYPE I DRAWING

DR. J.RUMSEY 01/03/12 DRAWING NO. 01595-1001

APP'D D.VERHAAGEN

SHEET 1 OF 1