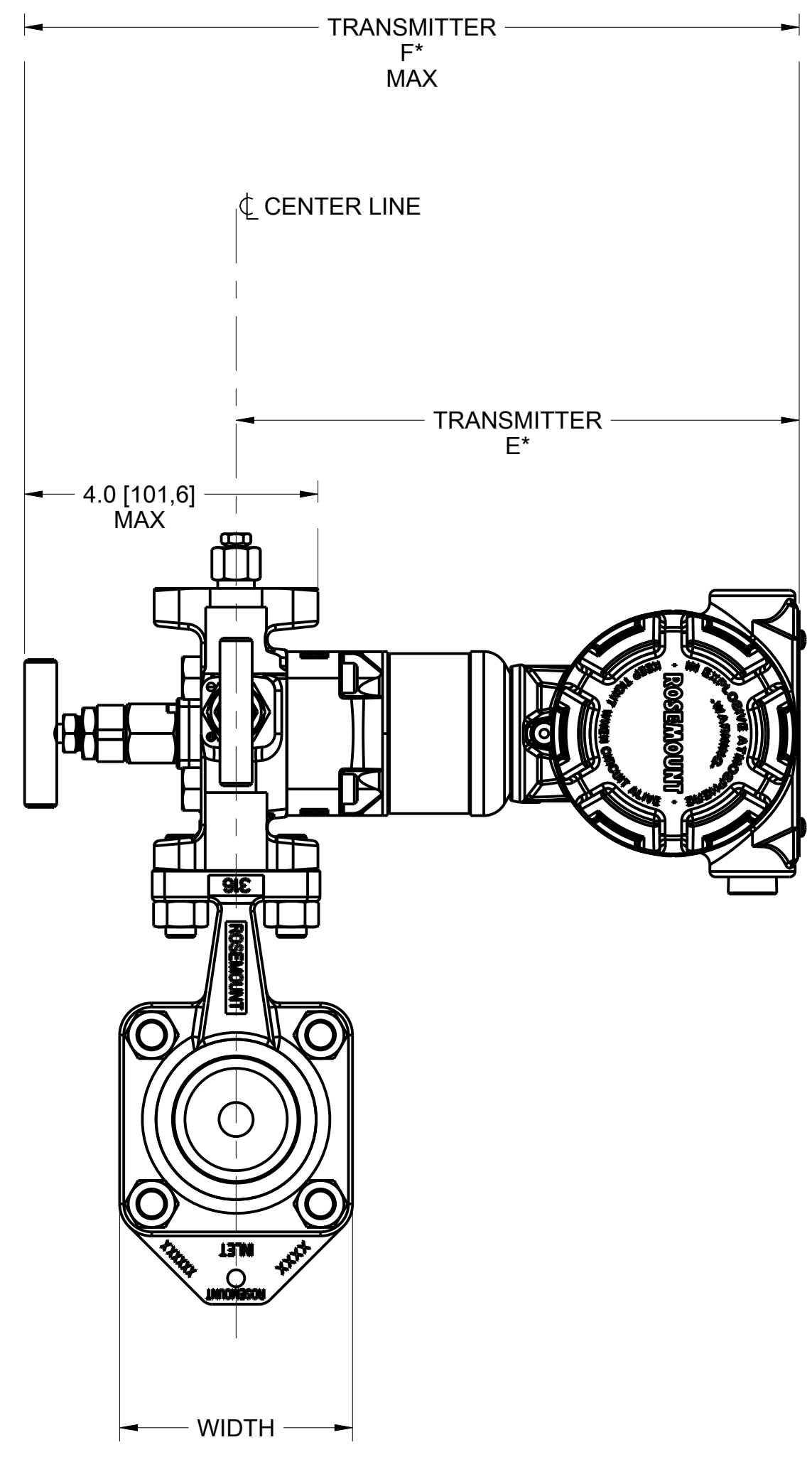
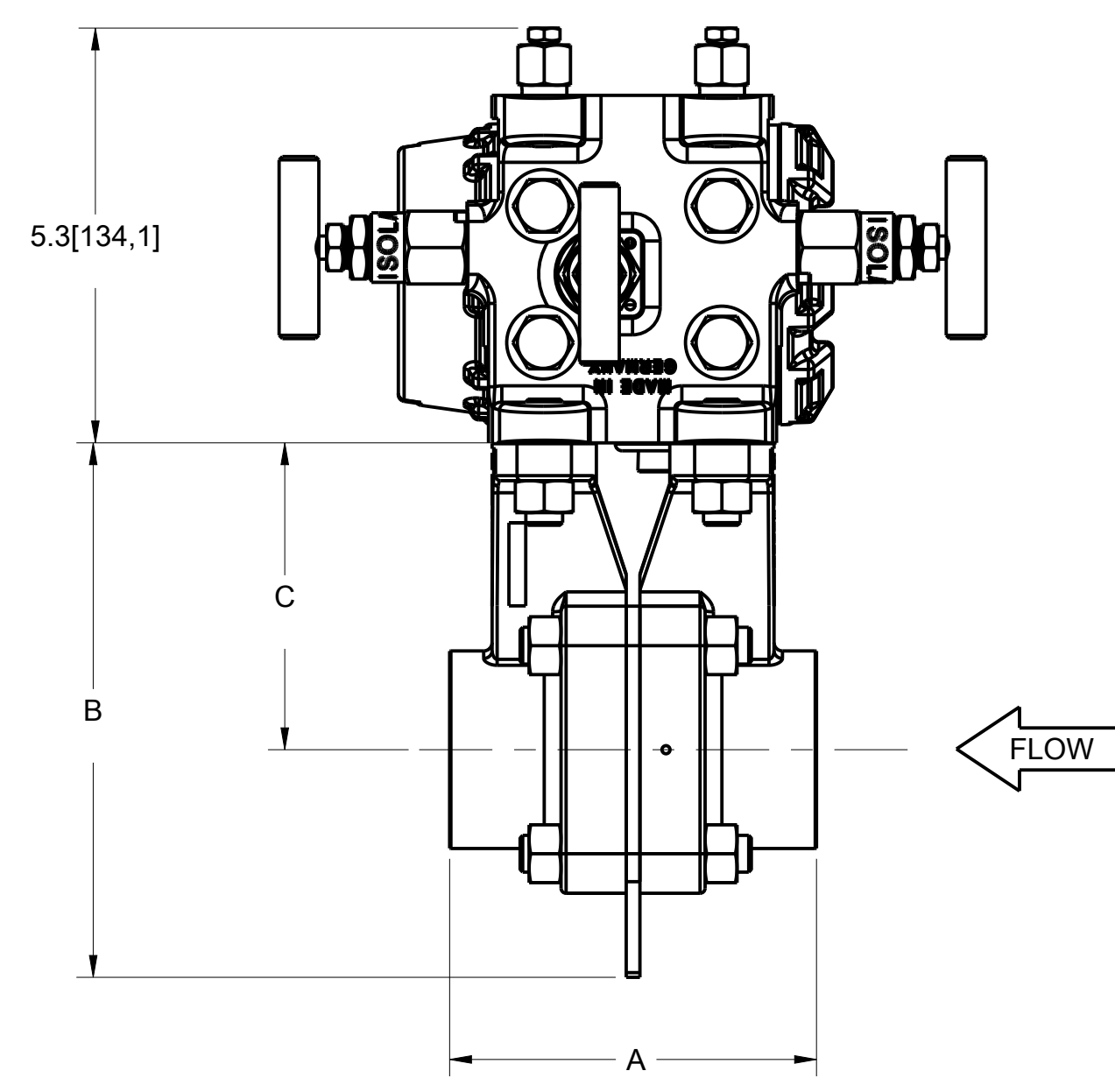
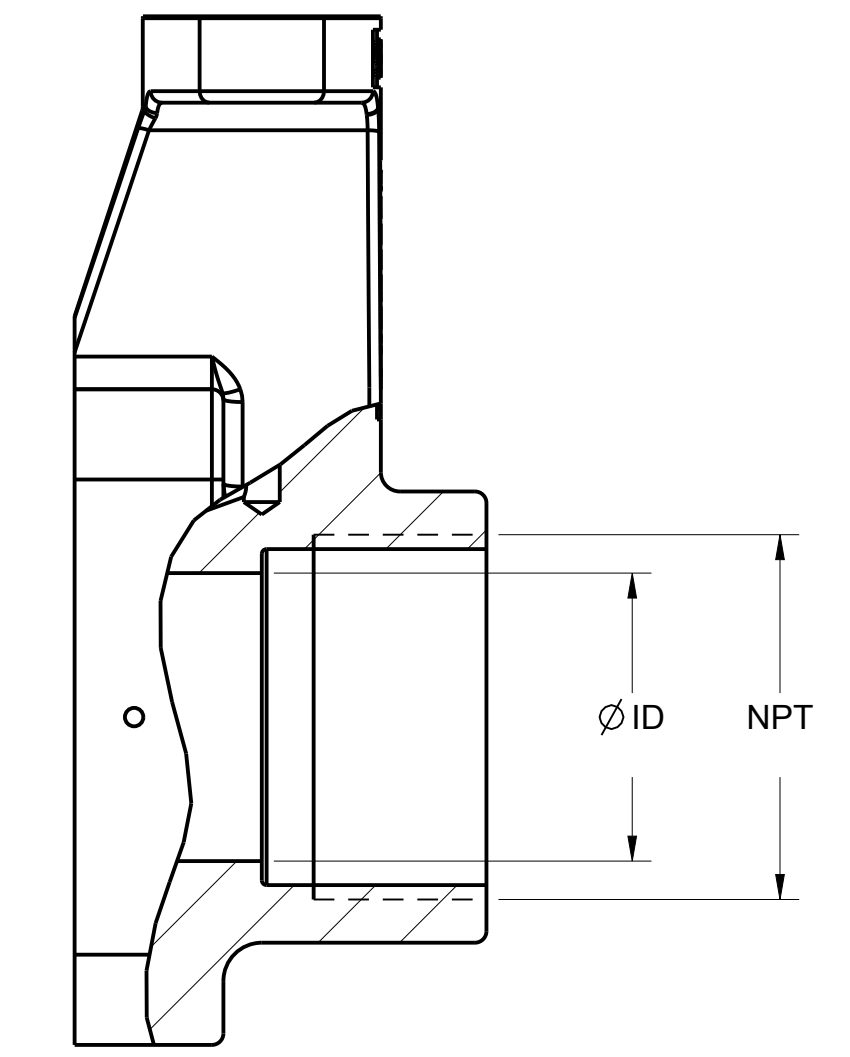
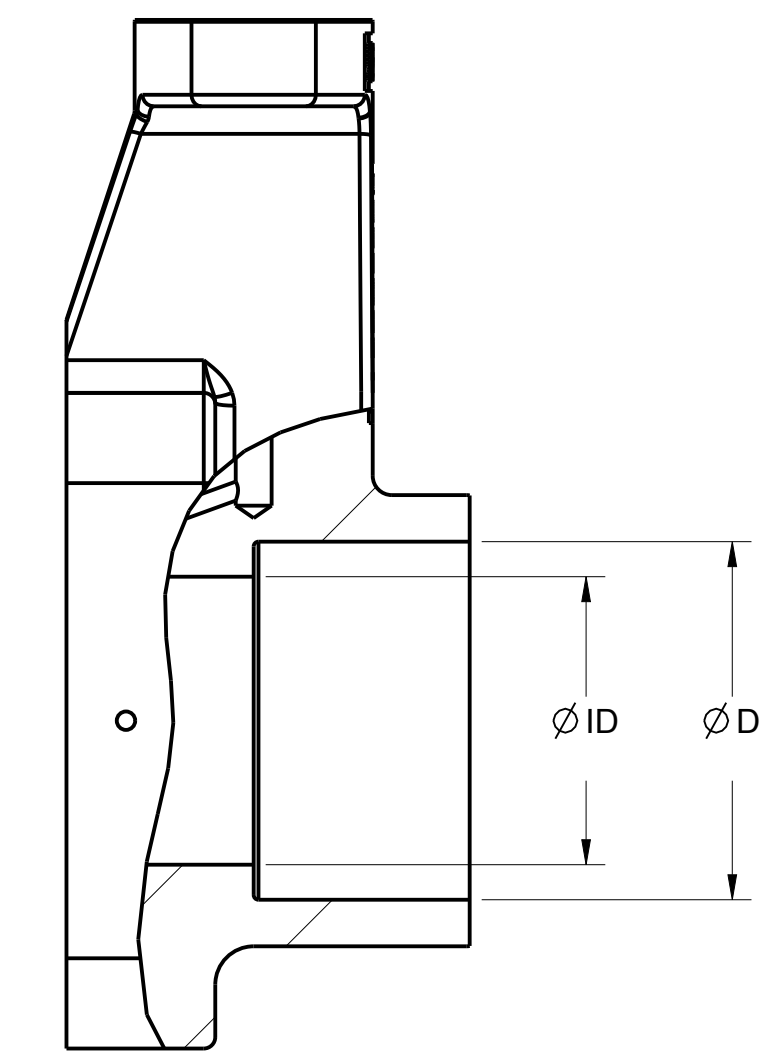
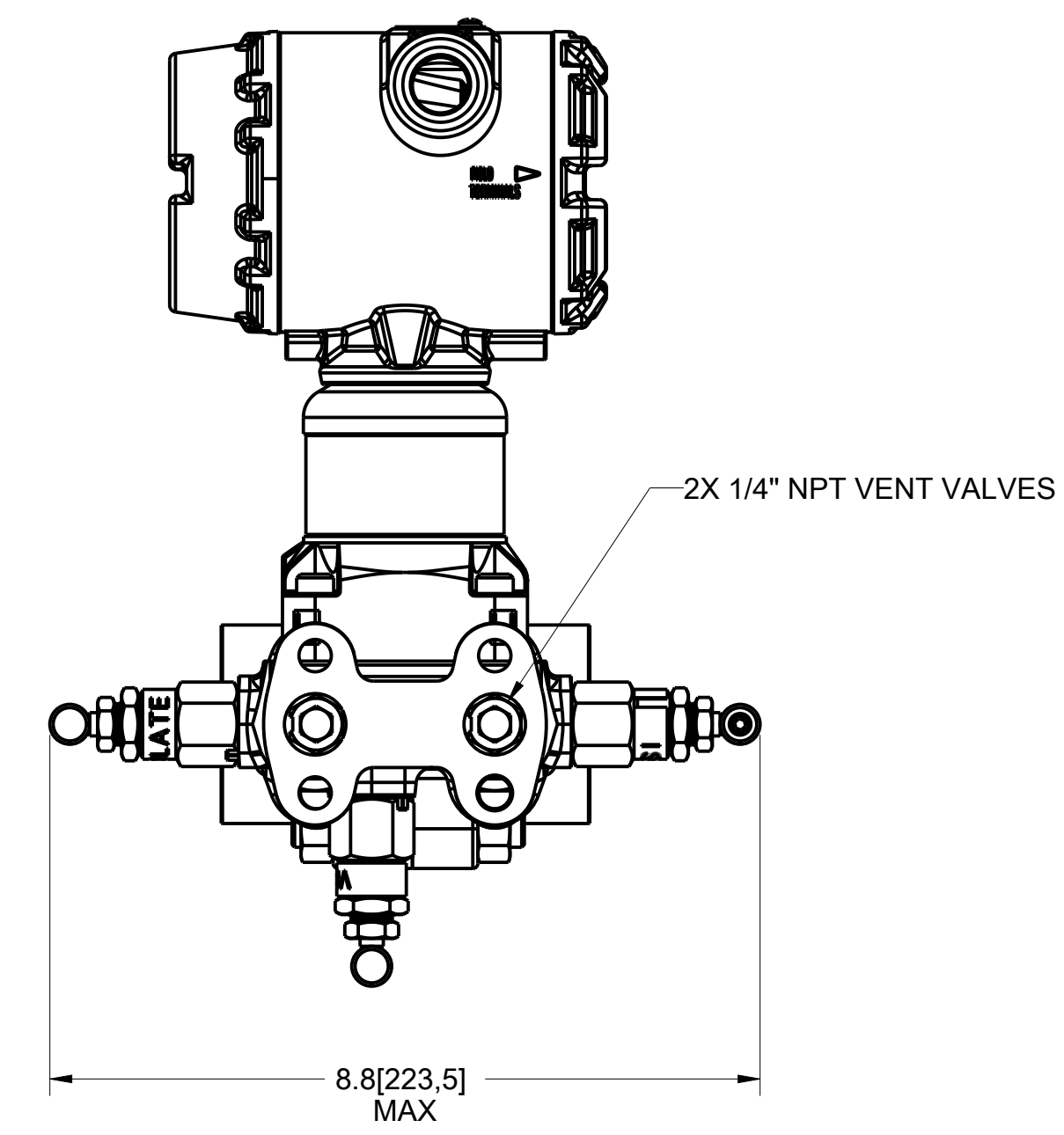


| REVISION TABLE | | | |
|---|------------|-------|---------|
| REVISION | ECO NO. | APP'D | DATE |
| AF | DSI1057056 | DK | 5/31/22 |
| DESCRIPTION | | | |
| ADD CLARITY TO DIM E&F, REMOVE REFERENCE TO J4 OPTION | | | |

| DIMENSIONS | LINE SIZE | | |
|------------|--------------|--------------|---------------|
| | 1/2" [12,7] | 1" [25,4] | 1-1/2" [38,1] |
| A | 3.4 [86,0] | 3.8 [97,0] | 4.5 [114,0] |
| B | 5.1 [130,2] | 5.5 [140,0] | 6.4 [161,5] |
| C | 3.0 [76] | 3.3 [84] | 3.7 [94] |
| Ø D | .805 [20,5] | 1.280 [32,5] | 1.865 [47,4] |
| Ø ID | .622 [15,8] | 1.049 [26,6] | 1.500 [38,1] |
| NPT | 1/2" - 14 | 1" - 11.5 | 1-1/2" - 11.5 |
| WIDTH | 2.793 [70,9] | 3.061 [77,8] | 3.415 [86,7] |



| FLOWMETER | TRANSMITTER E* | TRANSMITTER F* |
|-----------|----------------|----------------|
| 2051CFP | 7.00 [177,8] | 10.22 [259,6] |
| 3051CFP | 7.07 [179,6] | 10.29 [261,4] |
| 3051SFP | 8.51 [216,2] | 11.73 [297,9] |

*NOTE: IF OPTION CODES J2, J3, D4 OR D6 ARE SPECIFIED, THIS WILL CHANGE THE TRANSMITTER ORIENTATION. PLEASE REFER TO PAGE 10 FOR THE ADJUSTED DIMENSIONS.

SOCKET WELD OR THREADED BODY TYPE
(3051SFP FLOWMETER SHOWN THROUGHOUT / 3051CFP, 2051CFP AVAILABLE)

©2015 ROSEMOUNT, INC. ROSEMOUNT AND THE ROSEMOUNT LOGO ARE TRADEMARKS OF ROSEMOUNT, INC. ALL RIGHTS RESERVED. THIS DOCUMENT IS UNCONTROLLED. THE LATEST REVISION OF THIS DOCUMENT IS THE ONLY VALID ONE. FOR PRODUCT SPECIFICATIONS, REFER TO THE ROSEMOUNT WEBSITE.

REFERENCE ROSEMOUNT PRODUCT SPECIFICATIONS FOR PRODUCT SPECIFICATIONS. UNIT NOTES IN INCHES (mm).

3RD ANGLE

SIZE D SCALE NTS

EMERSON

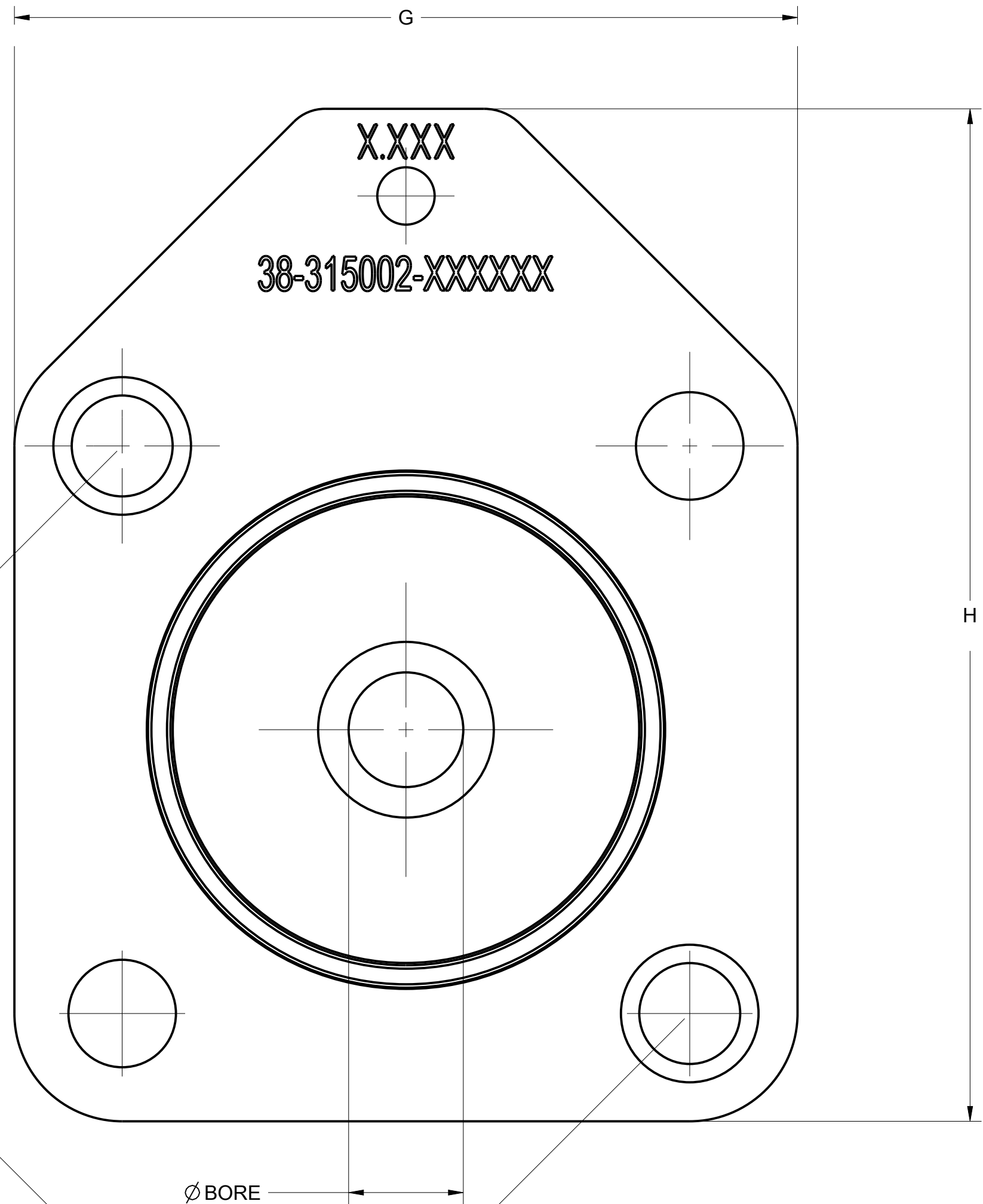
TITLE ROSEMOUNT TOP ASSEMBLY, 1195 4-BOLT TYPE I DRAWING

DR. M.ZHENG 04/06/16 DRAWING NO. 01195-1004

APP'D C.HAN 04/06/16

CAD MAINTAINED. (PRO/E) SHEET 1 OF 11

Electronic Master - Printed Copies Uncontrolled - Rosemount Proprietary



ORIFICE PLATE
DETAIL

| TABLE 2 - ORIFICE PLATE | | | |
|-------------------------|-------------|------------|---------------|
| DIMENSIONS | LINE SIZE | | |
| | 1/2" [12,7] | 1" [25,4] | 1-1/2" [38,1] |
| G | 2.8 [70,9] | 3.1 [77,8] | 3.4 [86,7] |
| H | 3.5 [89,5] | 3.8 [96,3] | 4.4 [112,1] |
| I | 2.6 [66,6] | 3.0 [76,2] | 3.5 [88,9] |

| TABLE 3 - ORIFICE PLATE | | |
|-------------------------|-------------|---------------|
| DESCRIPTION IN X.XXX" | NPS | Ø BORE |
| 0010 | 1/2" | .010 [0,25] |
| 0014 | | .014 [0,36] |
| 0020 | | .020 [0,51] |
| 0034 | | .034 [0,86] |
| 0066 | | .066 [1,68] |
| 0109 | | .109 [2,77] |
| 0160 | | .160 [4,06] |
| 0196 | | .196 [4,98] |
| 0260 | .260 [6,60] | |
| 0340 | .340 [8,64] | |
| 0150 | 1" | .150 [3,81] |
| 0250 | | .250 [6,35] |
| 0345 | | .345 [8,76] |
| 0500 | | .500 [12,70] |
| 0630 | | .630 [16,00] |
| 0800 | | .800 [20,32] |
| 0295 | 1-1/2" | .295 [7,49] |
| 0376 | | .376 [9,55] |
| 0512 | | .512 [13,00] |
| 0748 | | .748 [19,00] |
| 1022 | | 1.022 [25,96] |
| 1184 | | 1.184 [30,07] |

- NOTES:
- ROSEMOUNT CERTIFIES THIS DRAWING IS IN ACCORDANCE WITH ROSEMOUNT ENGINEERING SPECIFICATIONS AND ACCURATELY REPRESENTS THE EQUIPMENT FURNISHED.
 - SENSOR ORIENTATION SHOWN FOR DETAIL ONLY. FOR ACTUAL RECOMMENDED LOCATION & ORIENTATION REFER TO INSTALLATION INSTRUCTION MANUAL 00809-0100-4686.
 - FOR MODEL SELECTIONS, REFER TO ROSEMOUNT PRODUCT DATA SHEET 00813-0100-4686.
 - UNIT MAXIMUM TEMPERATURE IS 450° F (232° C) FOR DIRECT MOUNT ELECTRONICS, 850° F (454° C) FOR REMOTE MOUNT ELECTRONICS.
 - MATERIAL FOR UNITS IS 316/316L STAINLESS STEEL, ALLOY C-276, OR ALLOY 400.
 - ORIFICE TYPE IS SQUARE EDGE FOR ORIFICE BORE SIZE Ø .066 & LARGER. FOR ORIFICE Ø .010 TO Ø .034 (1/2" LINE SIZE ONLY) ORIFICE TYPE IS QUADRANT EDGE.
 - UNITS CAN BE ORDERED TO MEET CL 900# ANSI / DIN PN160 RATING.
 - 45° IS AN ACCEPTABLE ALTERNATIVE TO 37.5° FOR CODE MEETING ASME 31.1.
 - 1/2" NPT FLANGE ADAPTERS CAN BE ROTATED TO GIVE CONNECTION CENTERS OF 2.00 INCH (51mm), 2.13 INCH (54mm) OR 2.25 INCH (57mm).
 - WHEN 3051SFP, 3051CFP, OR 2051CFP ARE ORDERED WITH B31.1, B31.3, (J2, J3) OR C-276 MANIFOLD (D4, D6), A FLANGE BY FLANGE MANIFOLD IS PROVIDED. SEE SHEET 10 FOR DIMENSIONS.

©2015 ROSEMOUNT, INC. ROSEMOUNT INCORPORATES THIS INFORMATION IN ACCORDANCE WITH ROSEMOUNT ENGINEERING SPECIFICATIONS. UNIT NOTES IN INCHES (mm).

REFERENCE ROSEMOUNT PRODUCT SHEETS FOR PRODUCT SPECIFICATIONS. CLICK HERE

3RD ANGLE

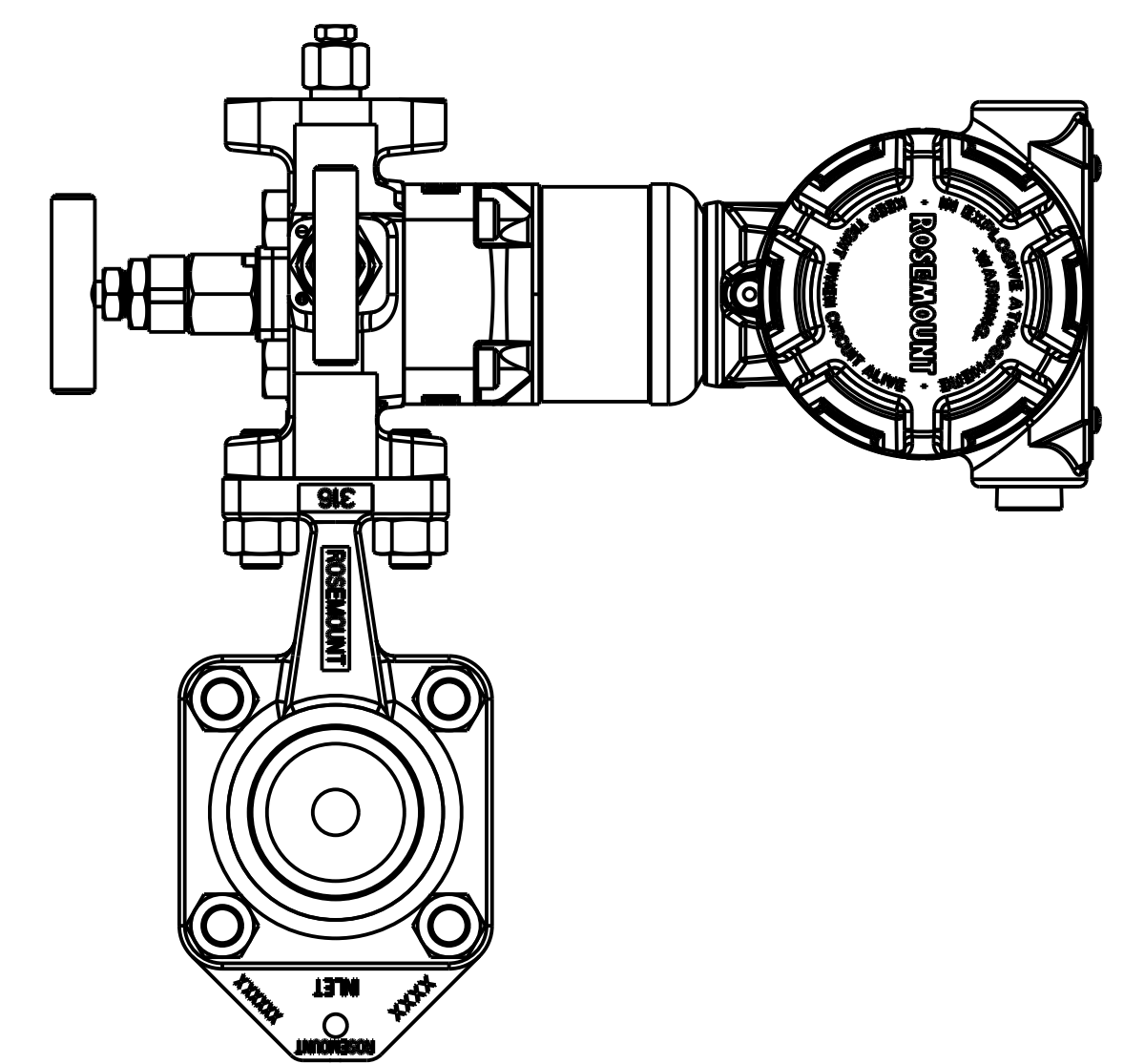
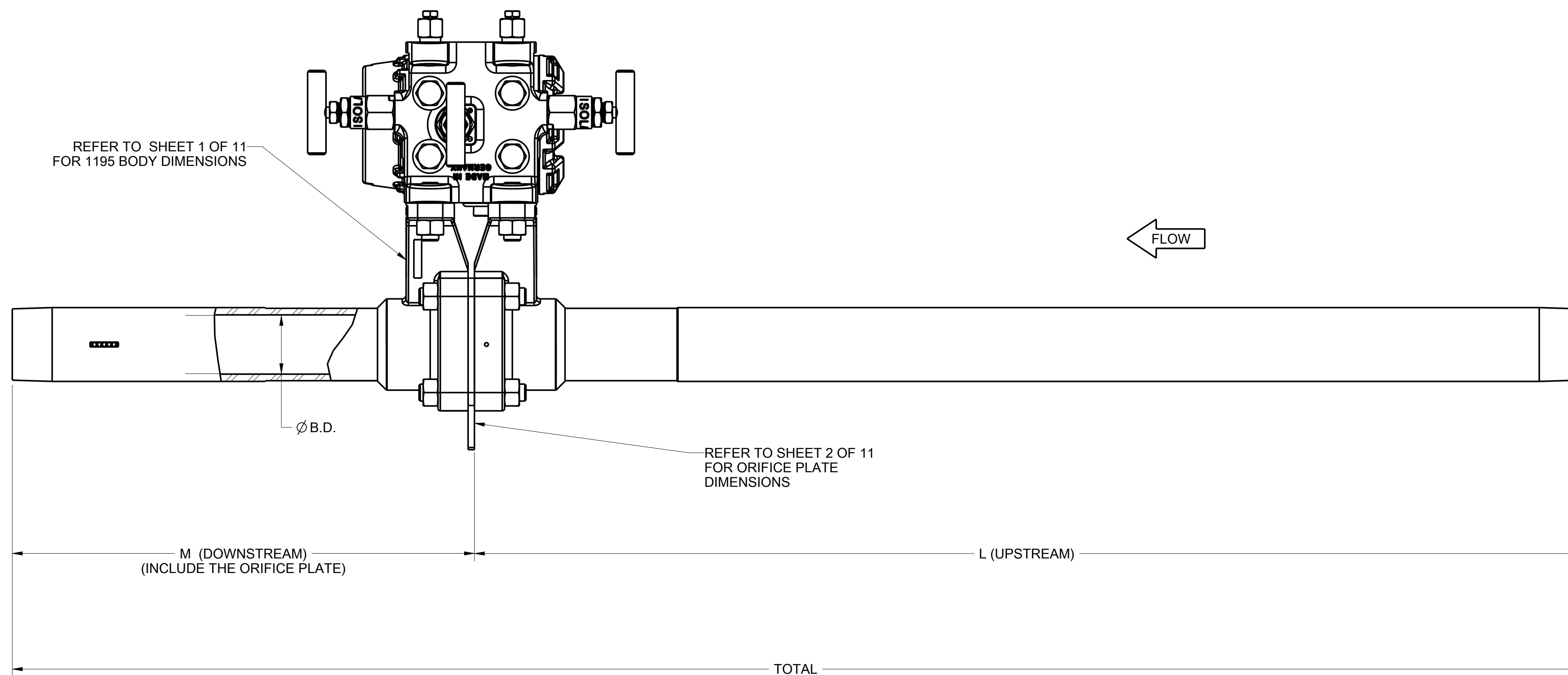
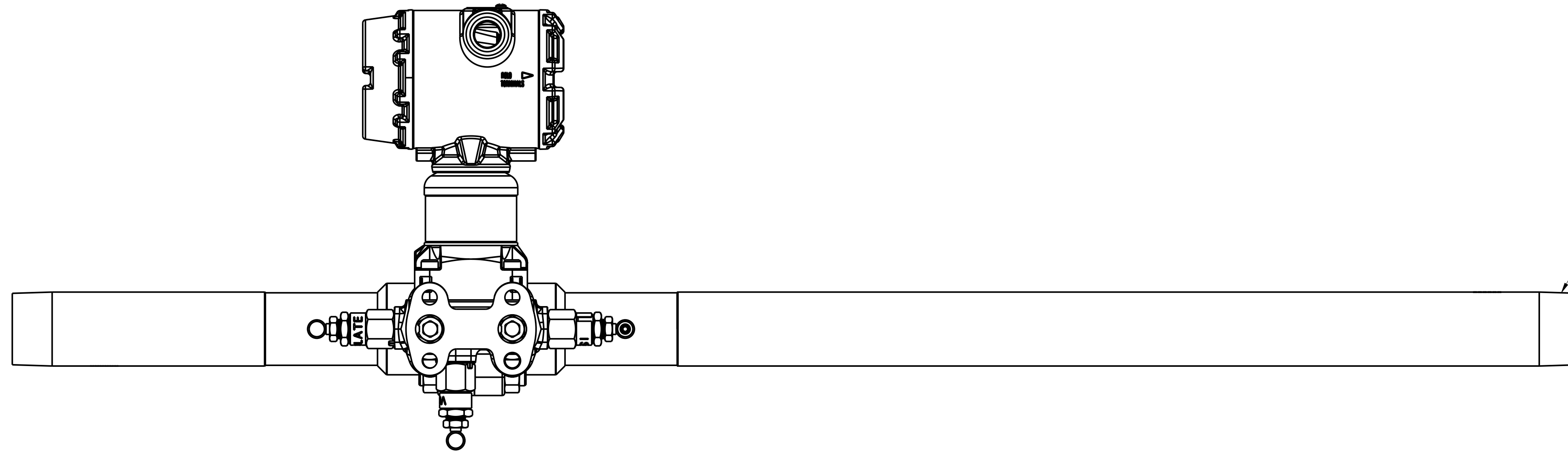
EMERSON

TITLE ROSEMOUNT TOP ASSEMBLY, 1195 4-BOLT
TYPE I DRAWING

| | | | | |
|------------------------|---------|----------|-------------|---------------|
| DR. | M.ZHENG | 04/06/16 | DRAWING NO. | 01195-1004 |
| APP'D | C.HAN | 04/06/16 | | |
| CAD MAINTAINED (PRO/E) | | | | SHEET 2 OF 11 |

Electronic Master - Printed Copies Uncontrolled - Rosemount Proprietary

| TABLE 4 - NPT PIPE ENDS | | | |
|-------------------------|---------------|---------------|----------------|
| DIMENSIONS | LINE SIZE | | |
| | 1/2" [12,7] | 1" [25,4] | 1-1/2" [38,1] |
| Ø B.D. | .664 [16,9] | 1.097 [27,9] | 1.567 [39,8] |
| L | 12.54 [318,4] | 20.24 [514,0] | 28.44 [722,4] |
| M | 5.74 [145,7] | 8.75 [222,2] | 11.91 [302,6] |
| TOTAL ±.13 [±3,3] | 18.27 [464,1] | 28.98 [736,1] | 40.35 [1024,9] |



THREADED PIPE ENDS

©2015 ROSEMOUNT, INC. ROSEMOUNT INCORPORATES THIS INFORMATION IN THIS ACCORDANCE WITH ROSEMOUNT ENGINEERING SPECIFICATIONS. UNIT NOTES IN INCHES (mm).

REFERENCE ROSEMOUNT PRODUCT SPECIFICATIONS FOR PRODUCT SPECIFICATIONS. CLICK HERE

3RD ANGLE

EMERSON

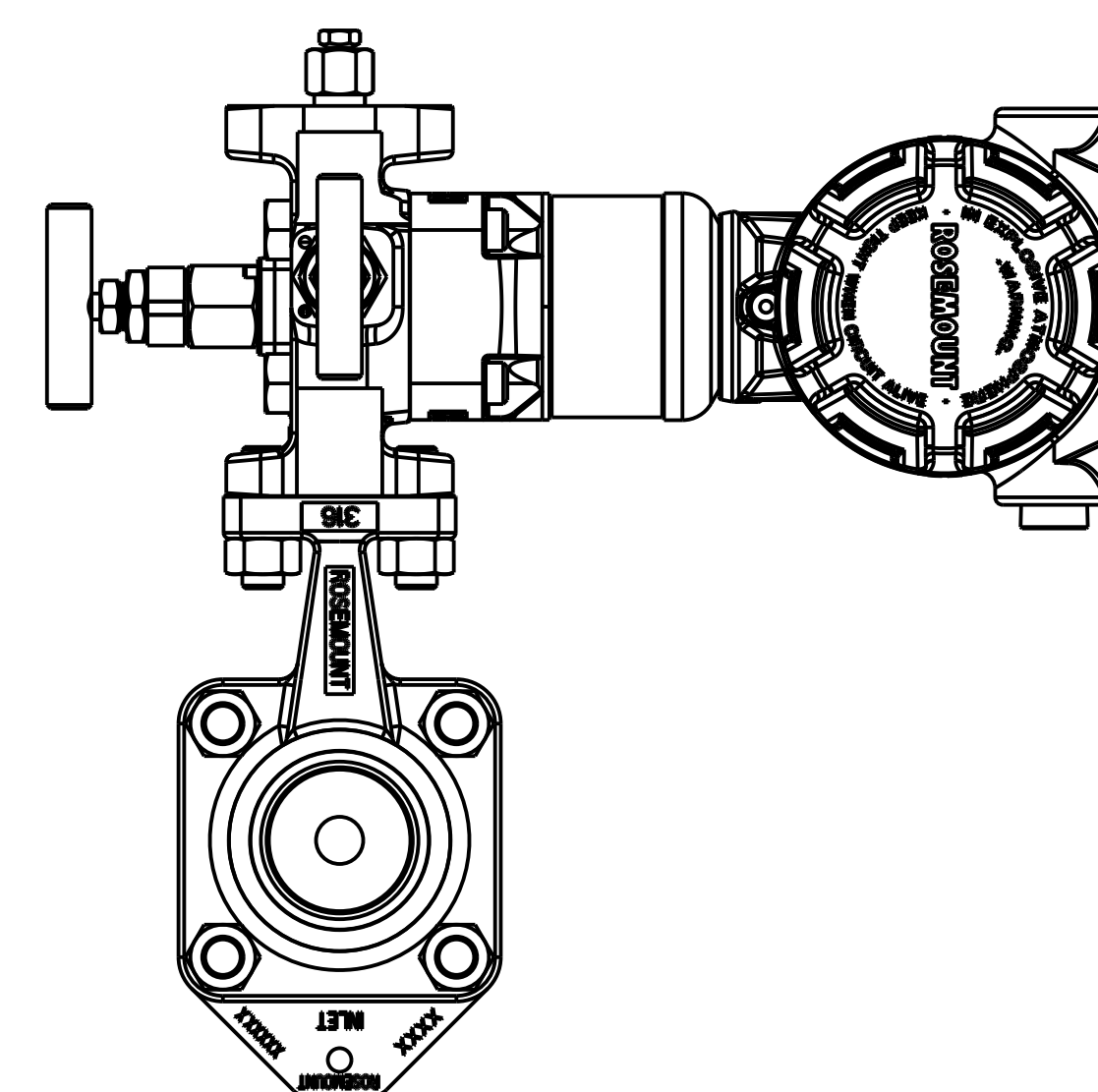
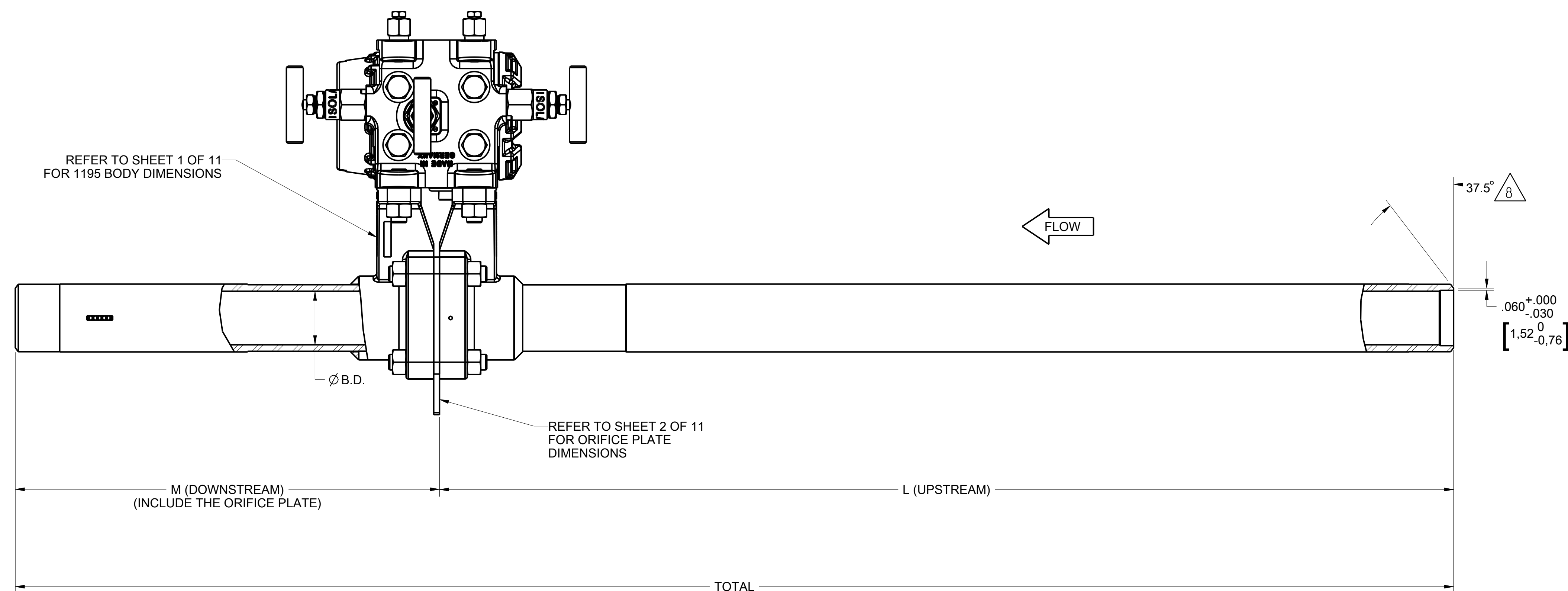
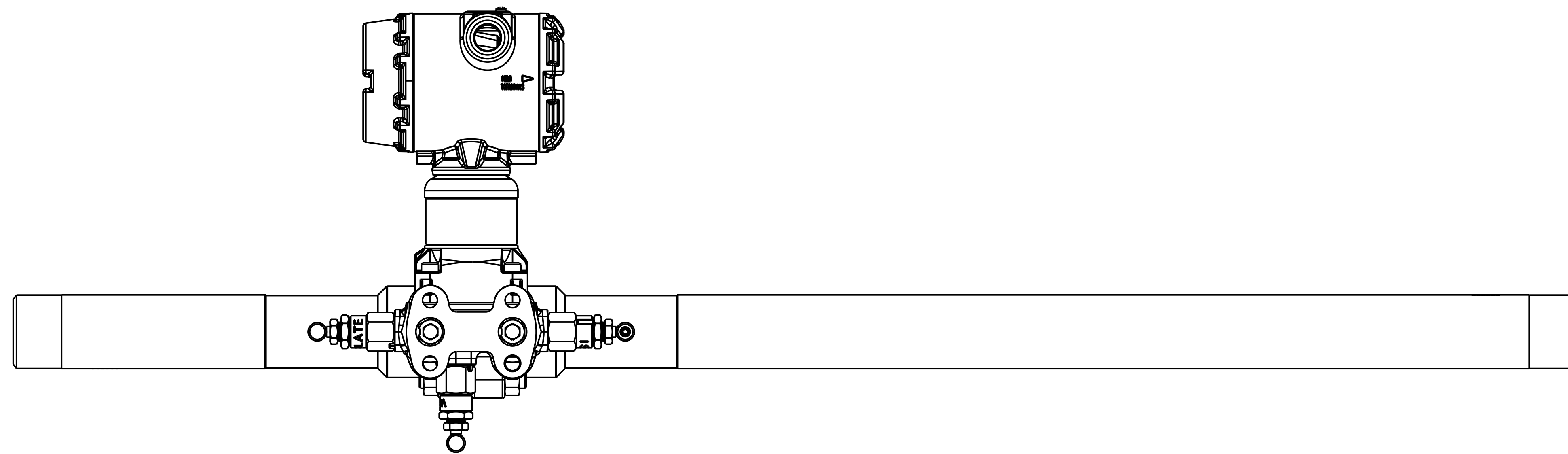
TITLE ROSEMOUNT TOP ASSEMBLY, 1195 4-BOLT TYPE I DRAWING

DR. M.ZHENG | 04/06/16 | DRAWING NO. 01195-1004

APP'D C.HAN | 04/06/16

CAD MAINTAINED (IPRO/EI) SHEET 3 OF 11

| TABLE 5 - BEVELED PIPE ENDS | | | |
|-----------------------------|---------------|---------------|----------------|
| DIMENSIONS | LINE SIZE | | |
| | 1/2" [12,7] | 1" [25,4] | 1-1/2" [38,1] |
| Ø B.D. | .664 [16,9] | 1.097 [27,9] | 1.567 [39,8] |
| L | 12.54 [318,4] | 20.24 [514,0] | 28.44 [722,4] |
| M | 5.74 [145,7] | 8.75 [222,2] | 11.91 [302,6] |
| TOTAL ± .13 [±3,3] | 18.27 [464,1] | 28.98 [736,1] | 40.35 [1024,9] |



BEVELED PIPE ENDS

©2015 ROSEMOUNT, INC. ROSEMOUNT INCORPORATES THIS INFORMATION IN THIS DRAWING IN ACCORDANCE WITH ROSEMOUNT ENGINEERING SPECIFICATIONS. UNIT NOTES IN INCHES (mm).

REFERENCE ROSEMOUNT PRODUCT SPECIFICATIONS FOR PRODUCT SPECIFICATIONS. CLICK HERE

DR. M.ZHENG 04/06/16 DRAWING NO. 01195-1004

APP'D C.HAN 04/06/16

CAD MAINTAINED. (PRO/E) SHEET 4 OF 11

EMERSON

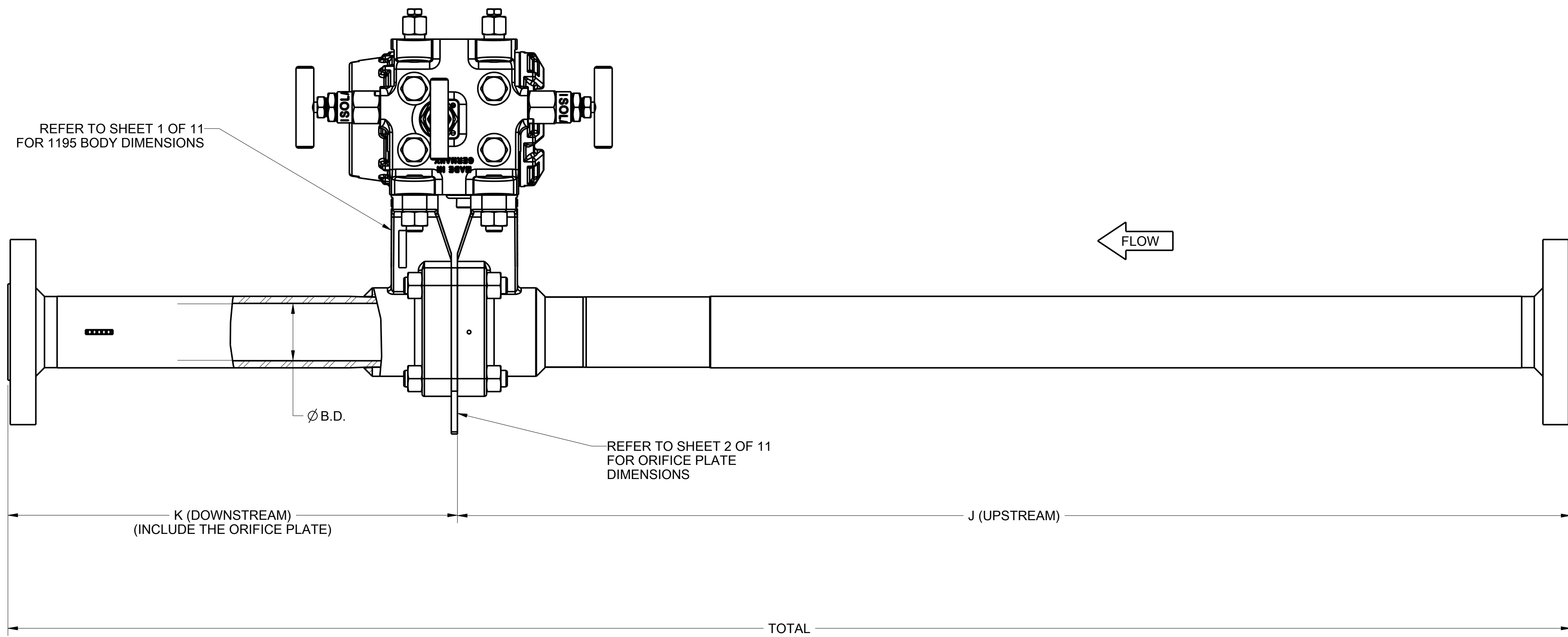
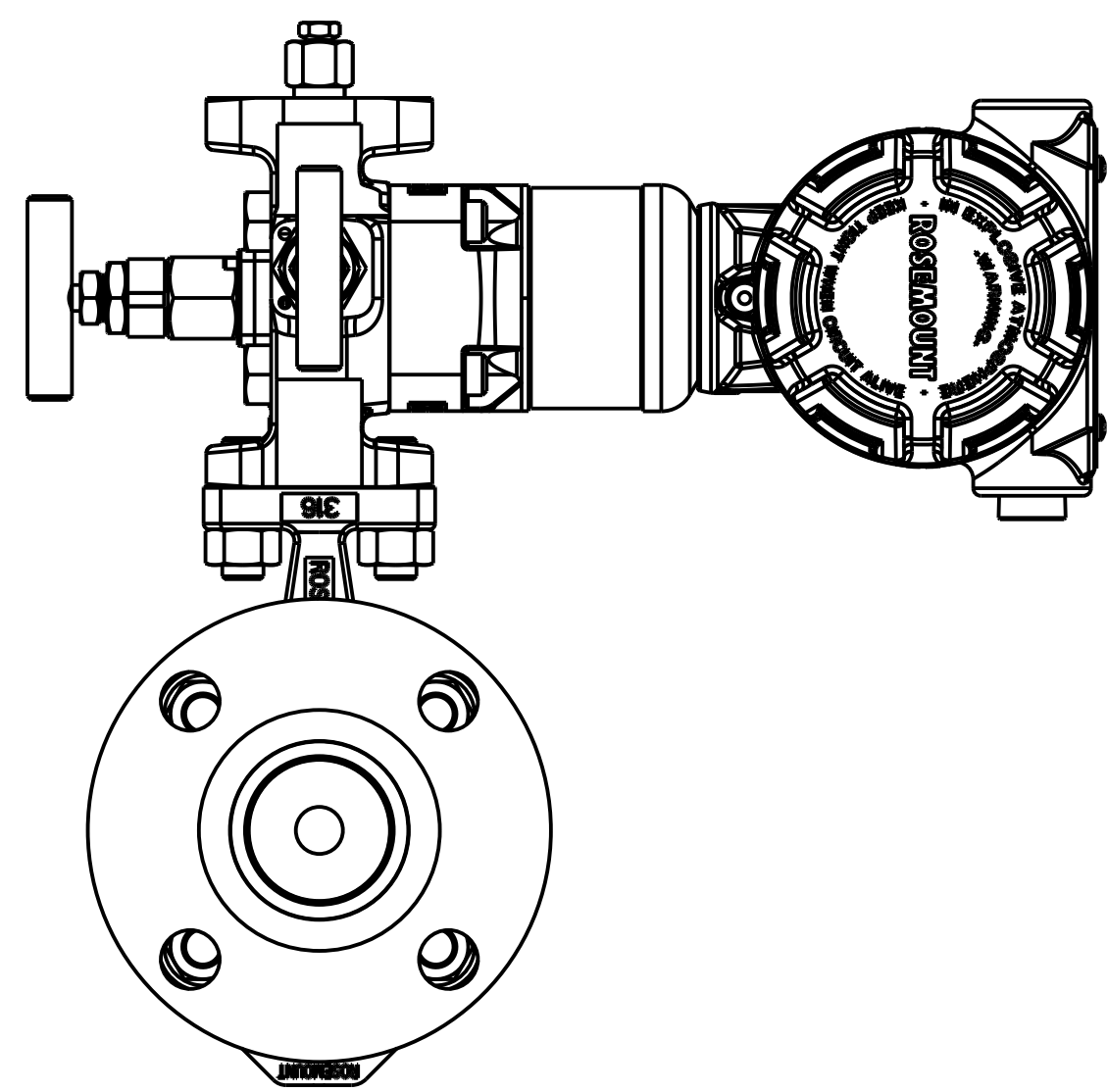
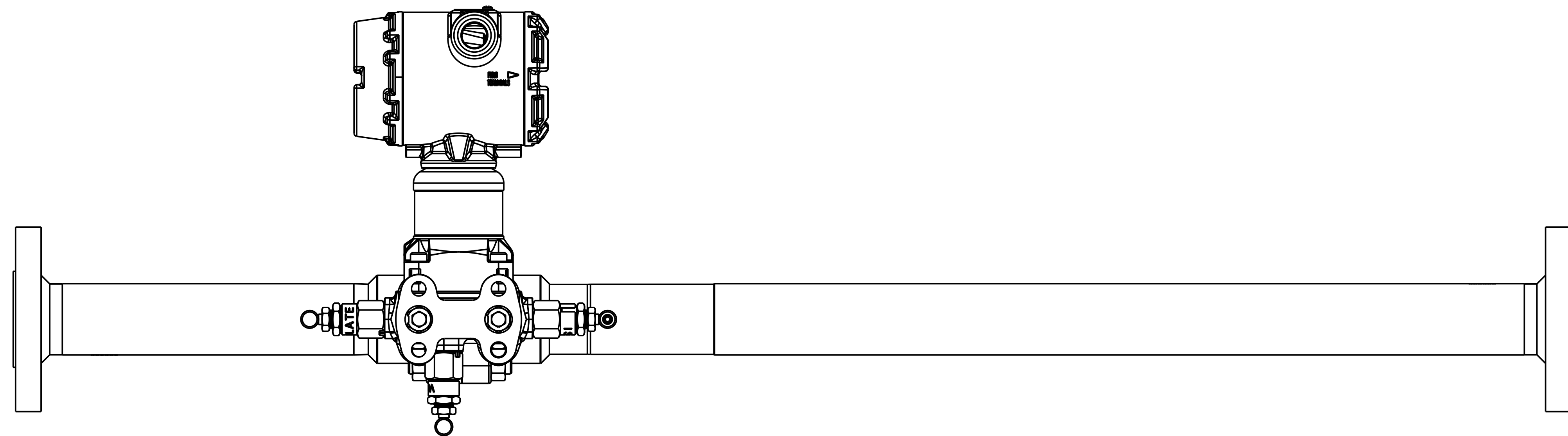
TITLE ROSEMOUNT TOP ASSEMBLY, 1195 4-BOLT TYPE I DRAWING

3RD ANGLE

SIZE D

SCALE NTS

| TABLE 6 - SLIP-ON FLANGE PIPE ENDS | | | |
|------------------------------------|---------------|---------------|----------------|
| DIMENSIONS | LINE SIZE | | |
| | 1/2" [12,7] | 1" [25,4] | 1-1/2" [38,1] |
| Ø B.D. | .664 [16,9] | 1.097 [27,9] | 1.567 [39,8] |
| J | 12.62 [320,4] | 20.32 [516,0] | 28.52 [724,4] |
| K | 5.82 [147,8] | 8.83 [224,2] | 11.99 [304,6] |
| TOTAL ± .25 [±6,4] | 18.43 [468,2] | 29.14 [740,2] | 40.51 [1029,0] |



SLIP-ON FLANGE PIPE ENDS

©2015 ROSEMOUNT, INC. ROSEMOUNT AND THE ROSEMOUNT LOGO ARE TRADEMARKS OF ROSEMOUNT, INC. ALL RIGHTS RESERVED. THIS DOCUMENT IS UNCONTROLLED. ROSEMOUNT ENGINEERING SPECIFICATIONS. UNIT NOTES IN INCHES (mm).

REFERENCE ROSEMOUNT PRODUCT SPECIFICATIONS FOR PRODUCT SPECIFICATIONS. CLICK HERE

3RD ANGLE

EMERSON

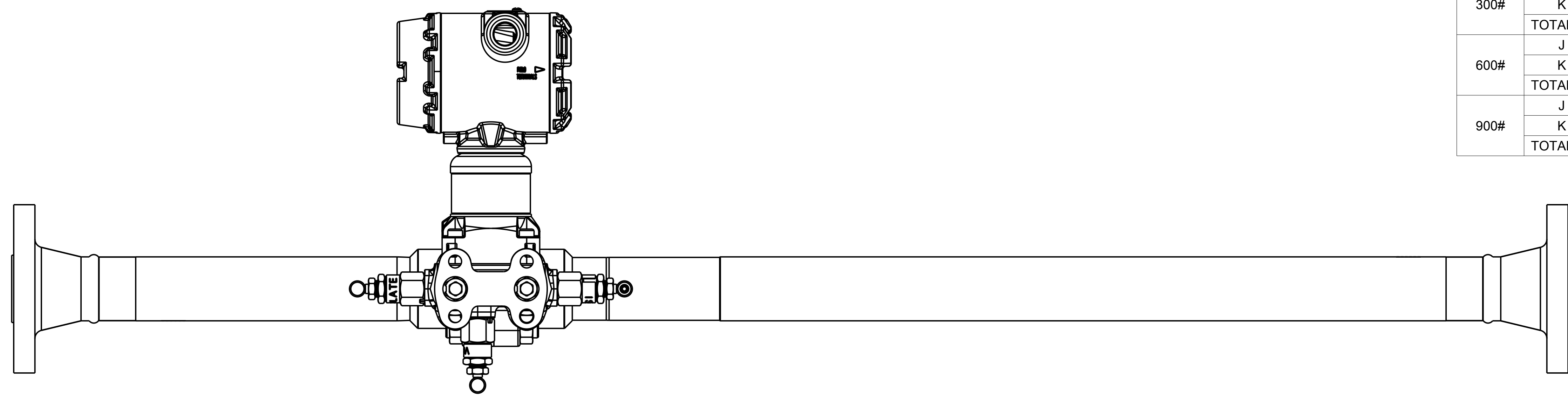
TITLE ROSEMOUNT TOP ASSEMBLY, 1195 4-BOLT TYPE I DRAWING

DR. M.ZHENG 04/06/16 DRAWING NO. 01195-1004

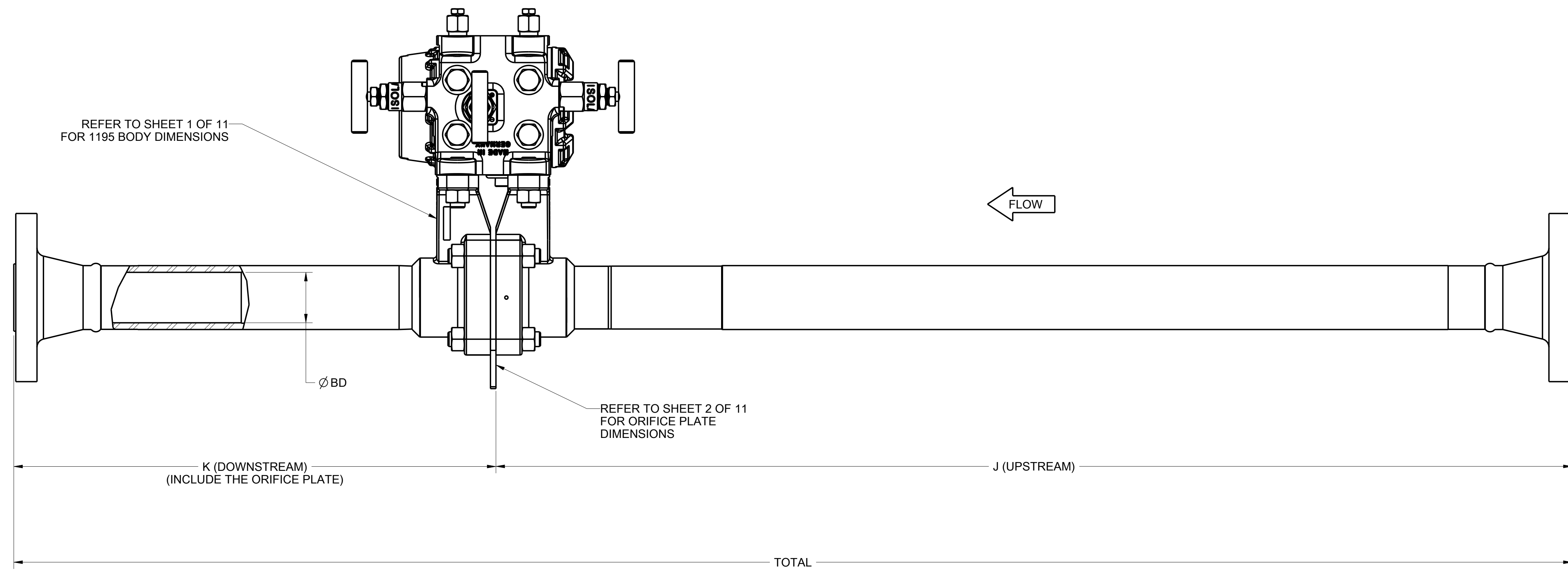
APP'D C.HAN 04/06/16

CAD MAINTAINED. (PRO/E) SHEET 5 OF 11

| TABLE 7 - WELD NECK FLANGE PIPE ENDS | | | | |
|--------------------------------------|--------------------|---------------|---------------|----------------|
| FLANGE RATING | DIMENSIONS | LINE SIZE | | |
| | | 1/2" [12,7] | 1" [25,4] | 1-1/2" [38,1] |
| | Ø B.D. | .664 [16,9] | 1.097 [27,9] | 1.567 [39,8] |
| 150# | J (RF150#) | 14.37 [364,9] | 22.37 [568,1] | 30.82 [782,9] |
| | K (RF150#) | 7.57 [192,3] | 10.88 [276,3] | 14.29 [363,1] |
| | TOTAL ± .25 [±6,4] | 21.94 [557,2] | 33.25 [844,5] | 45.12 [1146,0] |
| 300# | J (RF300#) | 14.56 [369,8] | 22.63 [574,7] | 31.06 [788,9] |
| | K (RF300#) | 7.76 [197,1] | 11.14 [282,9] | 14.53 [369,2] |
| | TOTAL ± .25 [±6,4] | 22.32 [566,9] | 33.77 [857,7] | 45.60 [1158,2] |
| 600# | J (RF600#) | 14.81 [376,0] | 22.88 [581,0] | 31.38 [797,1] |
| | K (RF600#) | 8.01 [203,4] | 11.39 [289,2] | 14.85 [377,2] |
| | TOTAL ± .25 [±6,4] | 22.81 [579,4] | 34.26 [870,3] | 46.23 [1174,3] |
| 900# | J (RF900#) | 15.13 [384,3] | 23.32 [592,3] | 31.88 [809,8] |
| | K (RF900#) | 8.33 [211,6] | 11.83 [300,5] | 15.35 [389,9] |
| | TOTAL ± .25 [±6,4] | 23.46 [595,9] | 35.15 [892,8] | 47.23 [1199,6] |

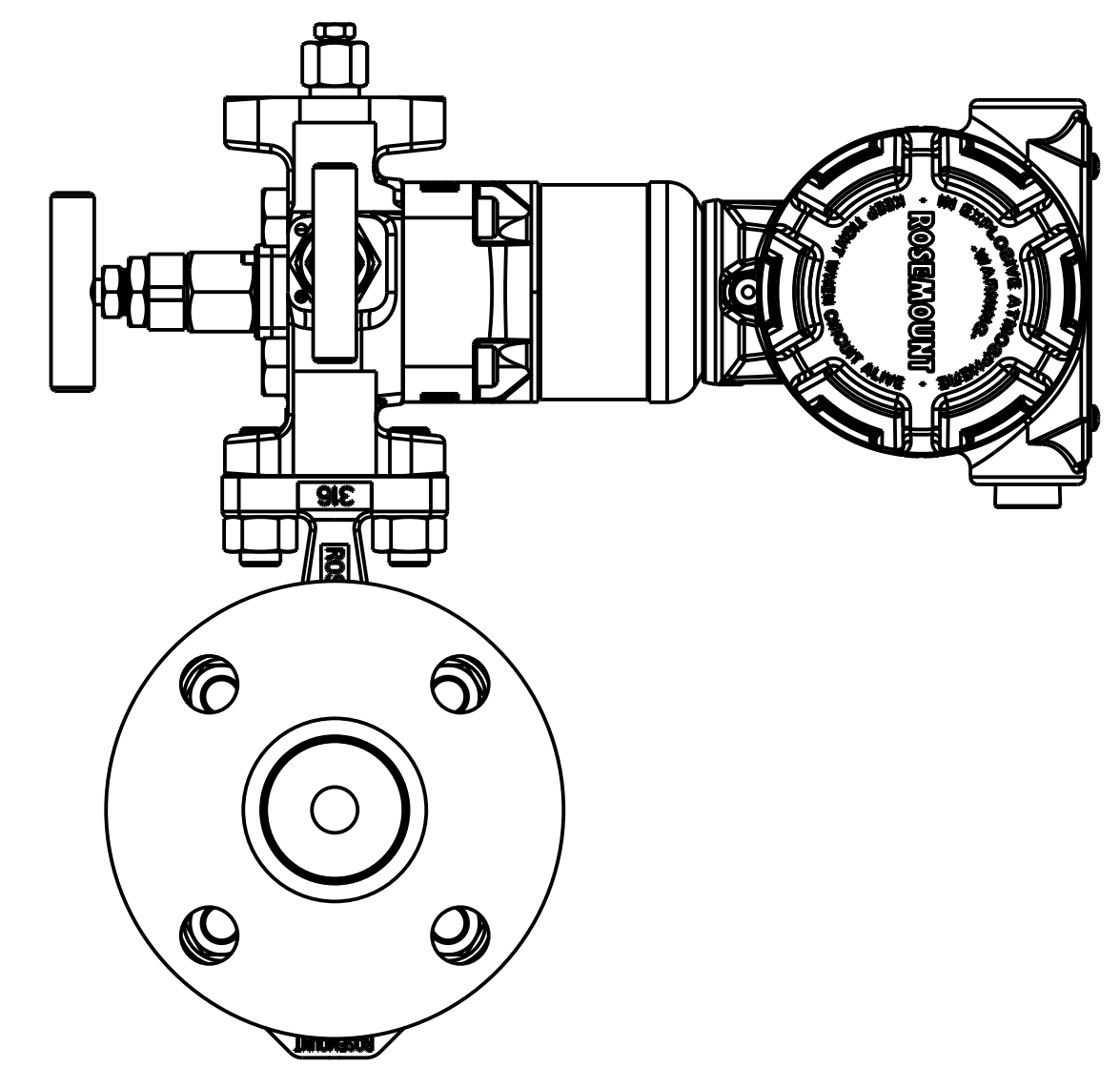


WELD NECK FLANGE
ANSI 150#, 300#, 600# & 900#



REFER TO SHEET 1 OF 11
FOR 1195 BODY DIMENSIONS

REFER TO SHEET 2 OF 11
FOR ORIFICE PLATE
DIMENSIONS



WELD NECK FLANGE PIPE ENDS

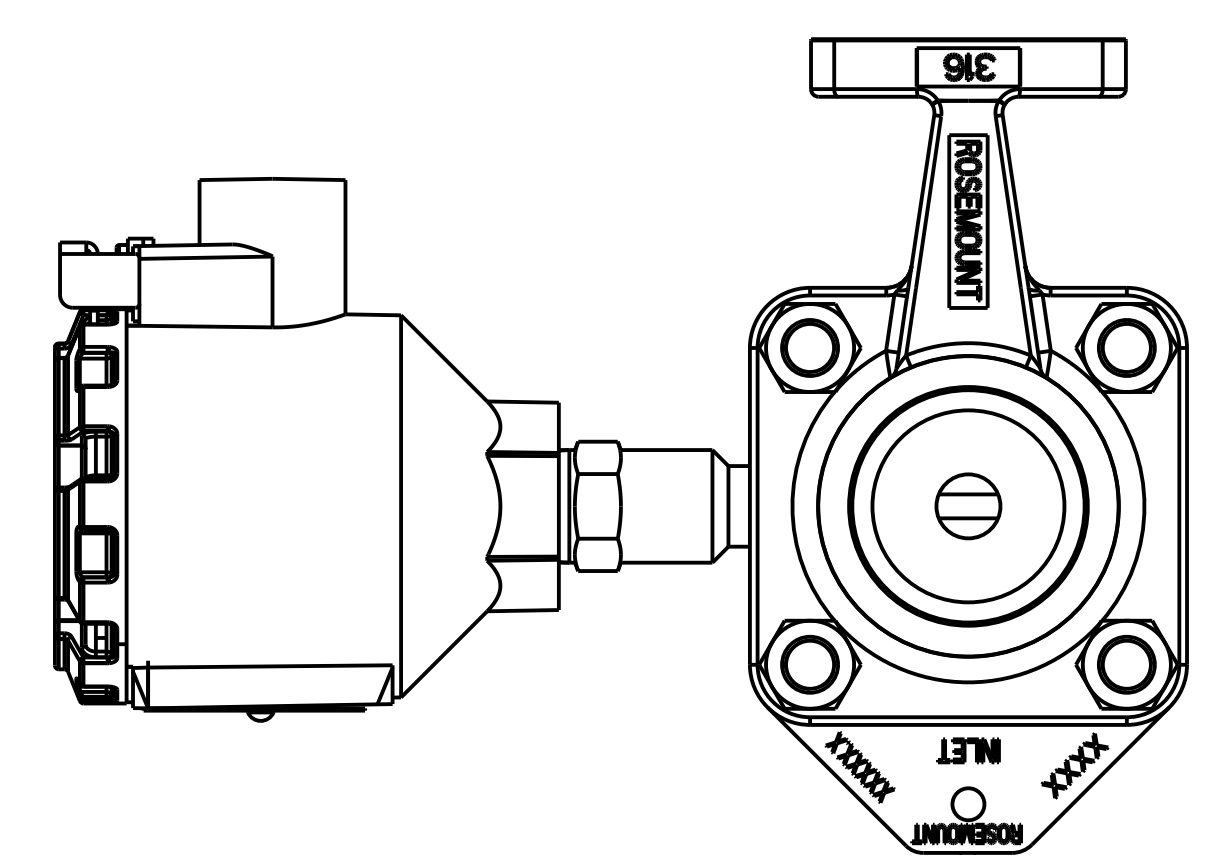
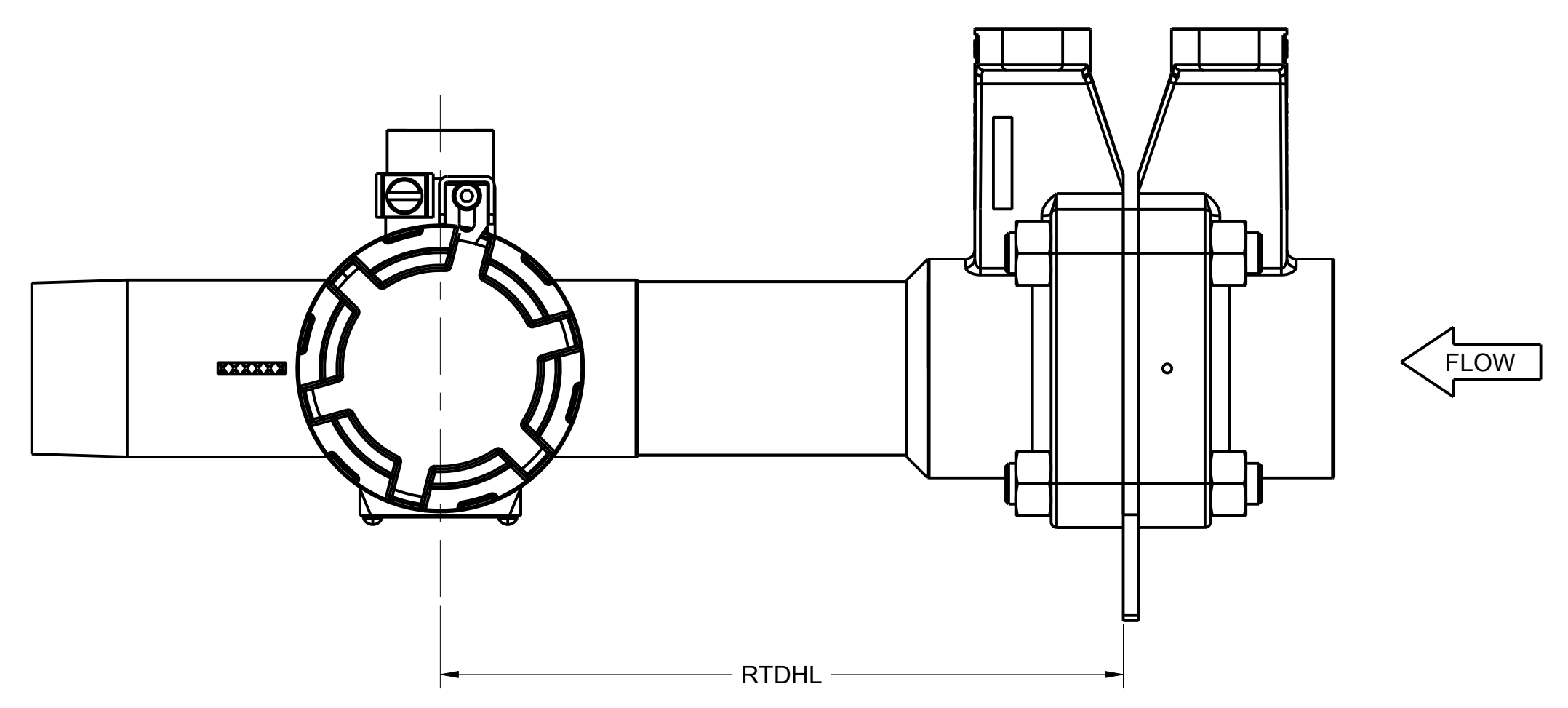
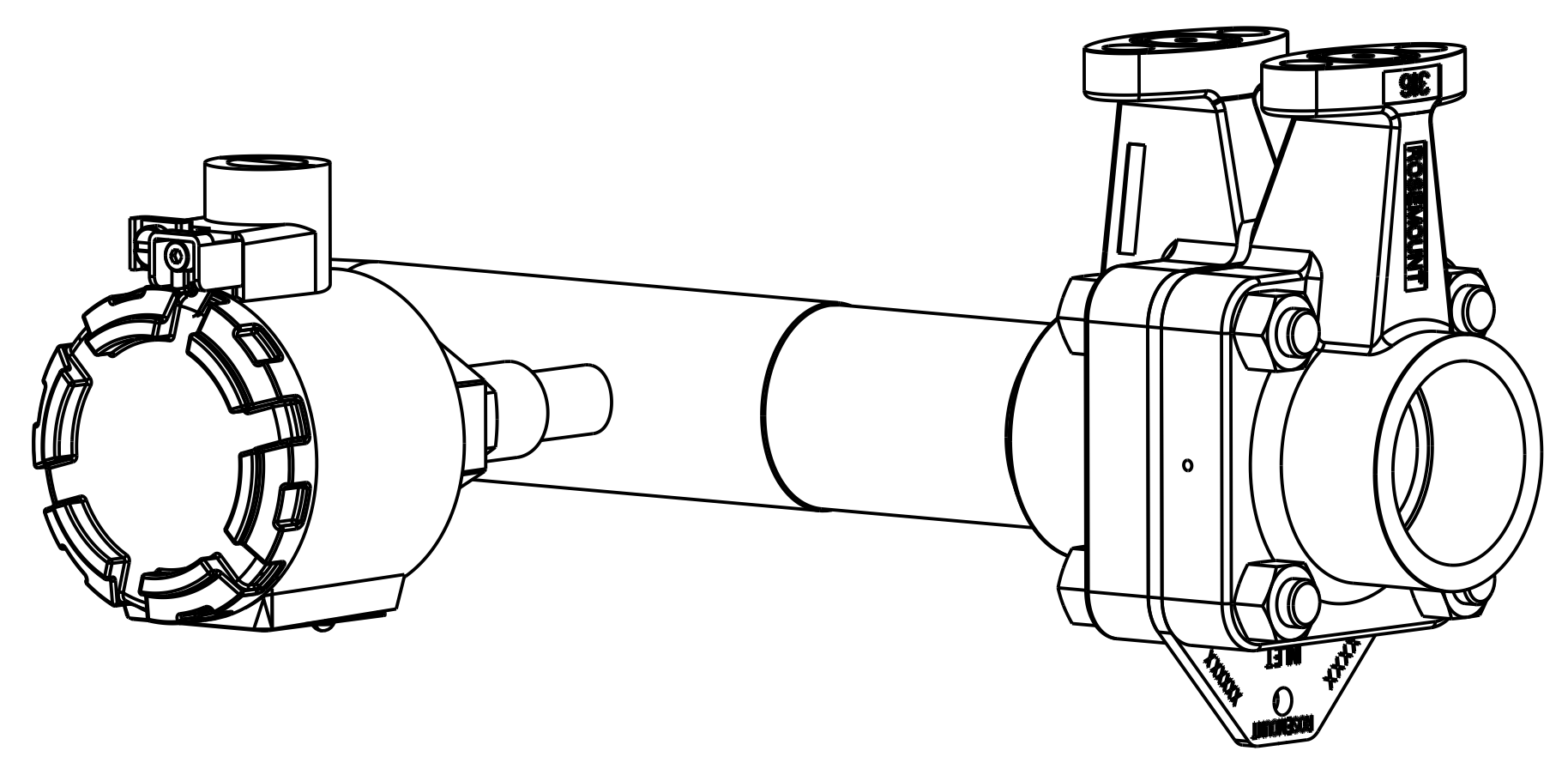
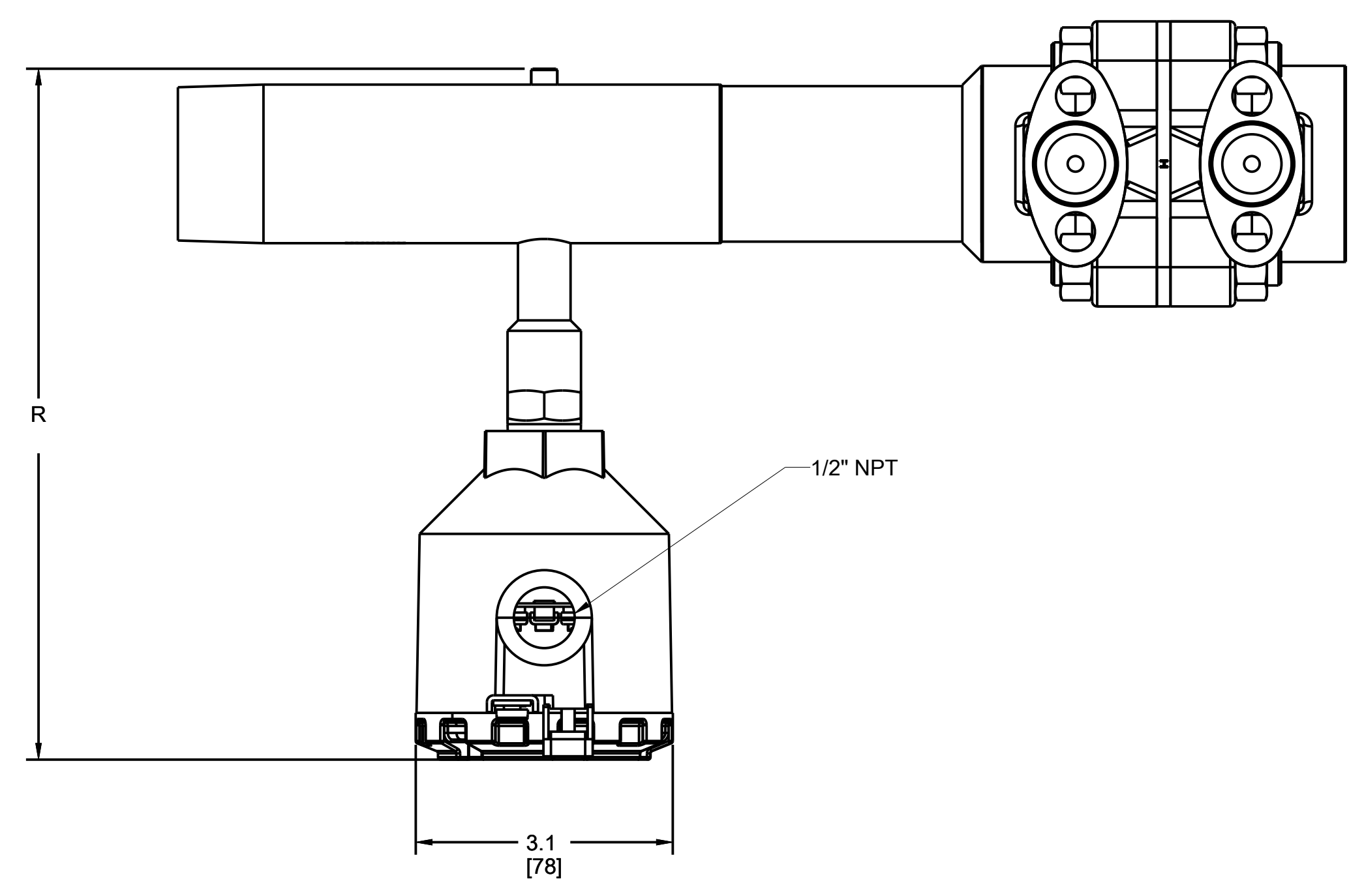
©2015 ROSEMOUNT, INC.
ROSEMOUNT AND THE ROSEMOUNT LOGO ARE TRADEMARKS OF ROSEMOUNT, INC. ALL RIGHTS RESERVED.
THIS DRAWING IS THE PROPERTY OF ROSEMOUNT, INC. IT IS TO BE USED ONLY FOR THE PROJECT AND SPECIFICATIONS FOR WHICH IT WAS PREPARED.
UNLESS OTHERWISE SPECIFIED, DIMENSIONS ARE IN INCHES (MILLIMETERS).

EMERSON

TITLE ROSEMOUNT TOP ASSEMBLY, 1195 4-BOLT
TYPE I DRAWING

DR. M.ZHENG 04/06/16 DRAWING NO. 01195-1004
APP'D C.HAN 04/06/16
CAD MAINTAINED (I/PRO/E) SHEET 6 OF 11

| TABLE 8 - OPTIONAL RTD TEMPERATURE CONNECTION | | | |
|---|-------------|-------------|---------------|
| DIMENSIONS | LINE SIZE | | |
| | 1/2" [12,7] | 1" [25,4] | 1-1/2" [38,1] |
| R | 7.4 [188] | 7.8 [198] | 8.4 [213] |
| RTDHL | 3.8 [96,5] | 5.8 [147,3] | 8.1 [205,7] |



OPTIONAL TEMPERATURE SENSOR

©2015 ROSEMOUNT, INC. ROSEMOUNT INCORPORATES THIS INFORMATION IN THIS DOCUMENT IN ACCORDANCE WITH ROSEMOUNT ENGINEERING SPECIFICATIONS. UNIT NOTES IN INCHES (mm).

REFERENCE ROSEMOUNT PRODUCT SHEETS FOR PRODUCT SPECIFICATIONS. CLICK HERE

EMERSON

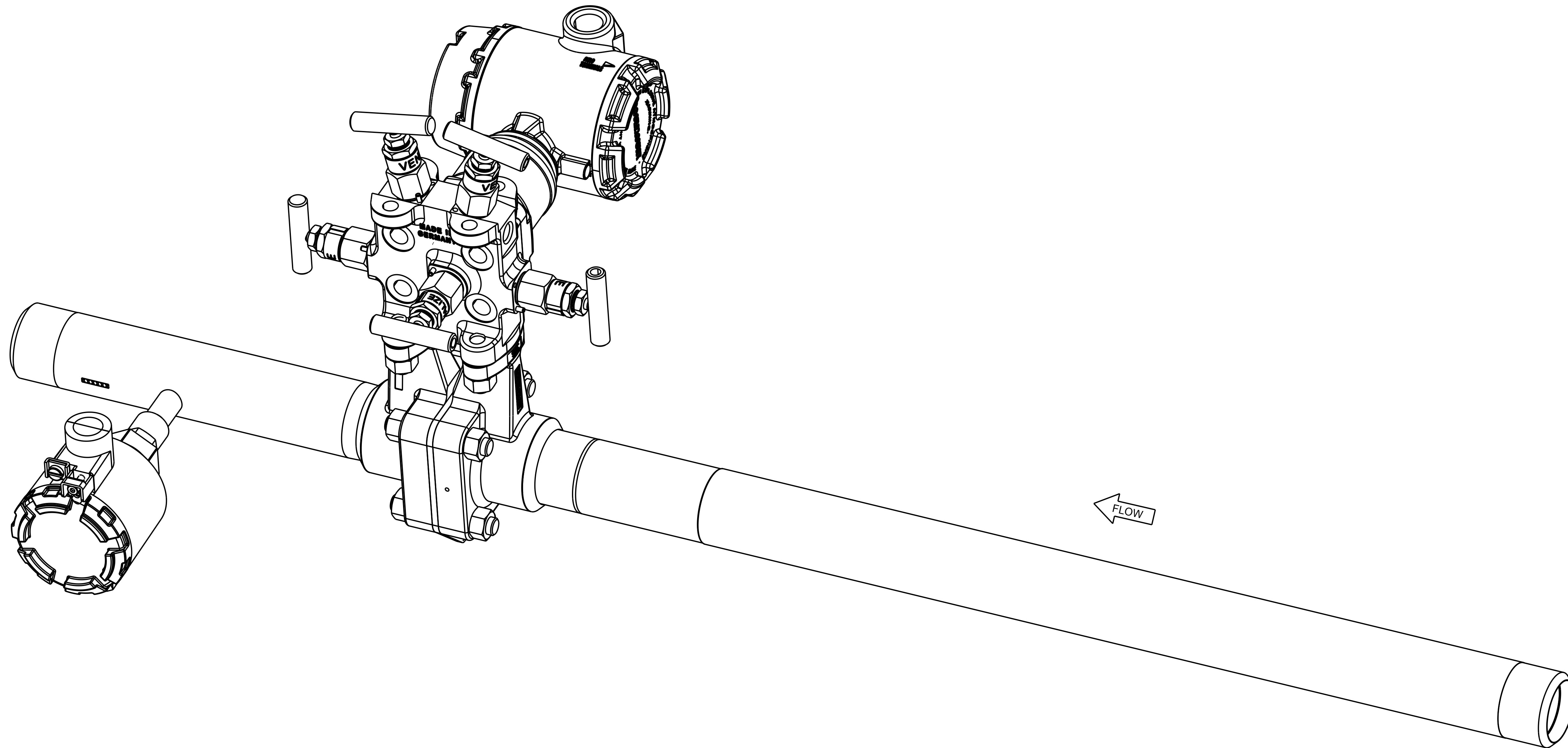
TITLE ROSEMOUNT TOP ASSEMBLY, 1195 4-BOLT TYPE I DRAWING

DR. M.ZHENG 04/06/16 DRAWING NO. 01195-1004

APP'D C.HAN 04/06/16

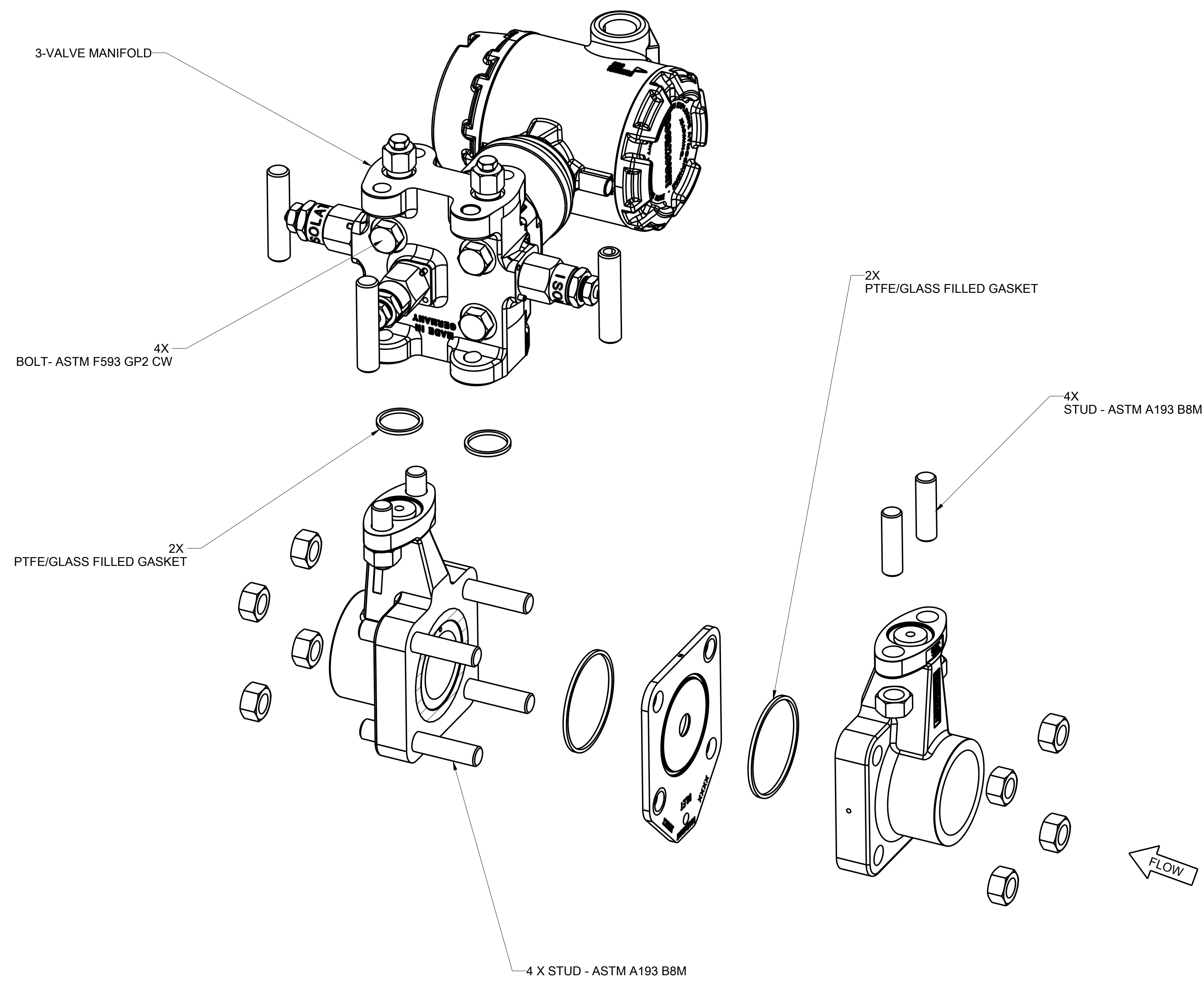
CAD MAINTAINED. (PRO/E) SHEET 7 OF 11

Electronic Master - Printed Copies Uncontrolled - Rosemount Proprietary



3051SFP (SHOWN)
 DIRECT MOUNT 3051SMV TRANSMITTER (W/TEMPERATURE)
 AND 5-VALVE MANIFOLD
 (TYP EXAMPLE / 3051CFP AND 2051CFP AVAILABLE)

| | | | |
|---|--|------------|--------------|
| ©2015 ROSEMOUNT, INC. ROSEMOUNT INC. EXPRESSLY DISCLAIMS LIABILITY FOR THIS DOCUMENT. THIS DOCUMENT IS PROVIDED AS IS. ROSEMOUNT ENGINEERING SPECIFICATIONS APPLY TO THIS DOCUMENT. UNIT NOTES IN INCHES (mm). REFERENCE ROSEMOUNT PRODUCT SPECIFICATIONS FOR PRODUCT SPECIFICATIONS. CLICK HERE | 3RD ANGLE | SIZE D | SCALE NTS |
| | | | |
| | TITLE ROSEMOUNT TOP ASSEMBLY, 1195 4-BOLT TYPE I DRAWING | | |
| | DR. M.ZHENG 04/06/16 DRAWING NO. | 01195-1004 | |
| APP'D C.HAN 04/06/16 | CAD MAINTAINED: (PRO/E) SHEET 8 OF 11 | | |

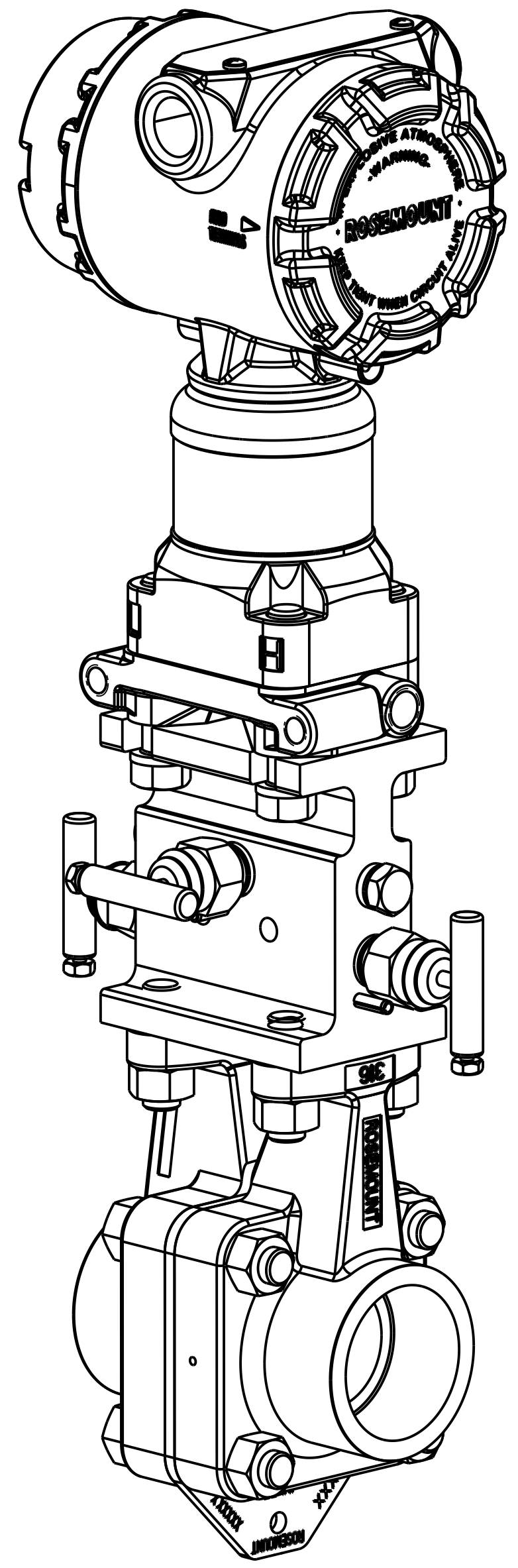
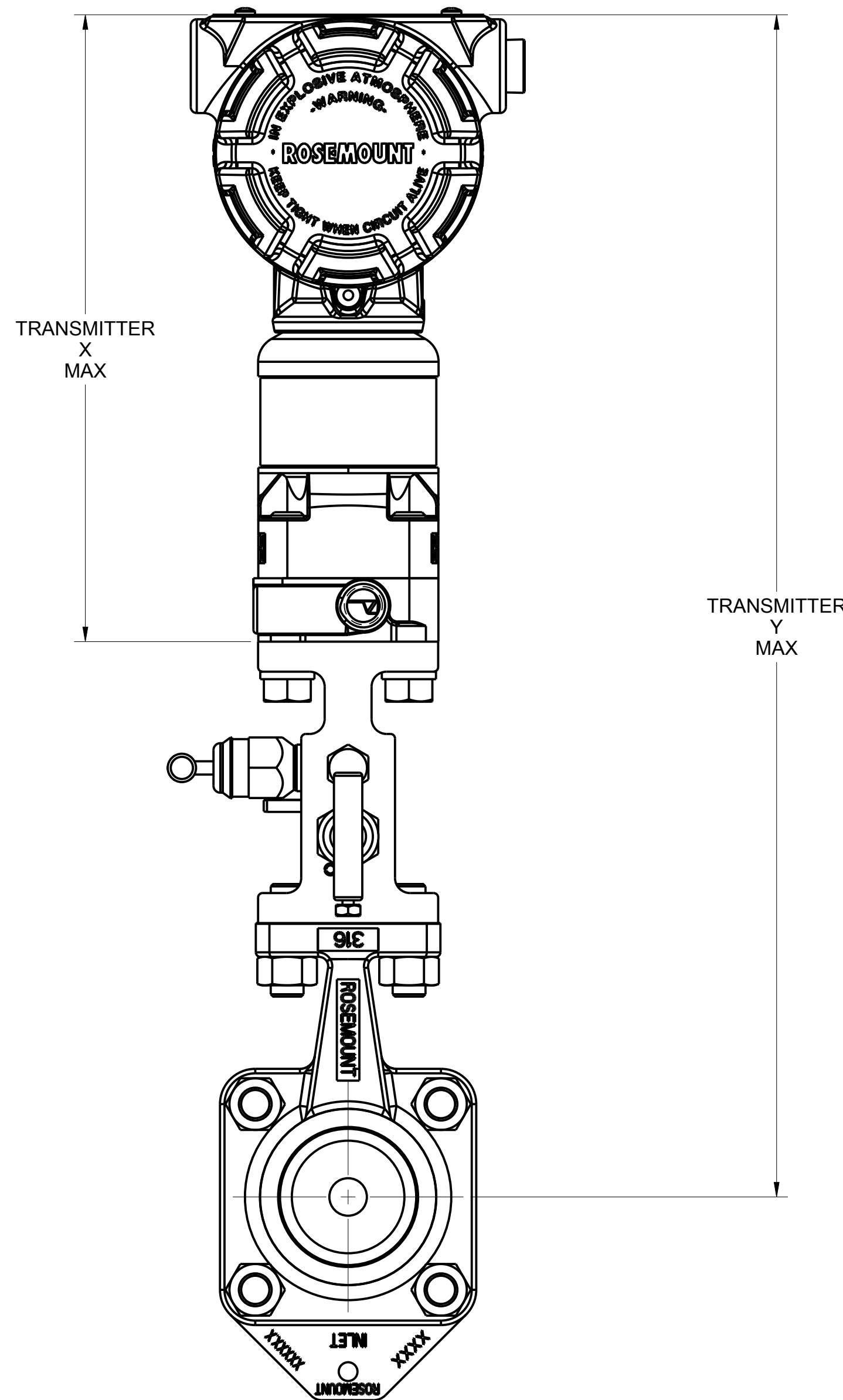
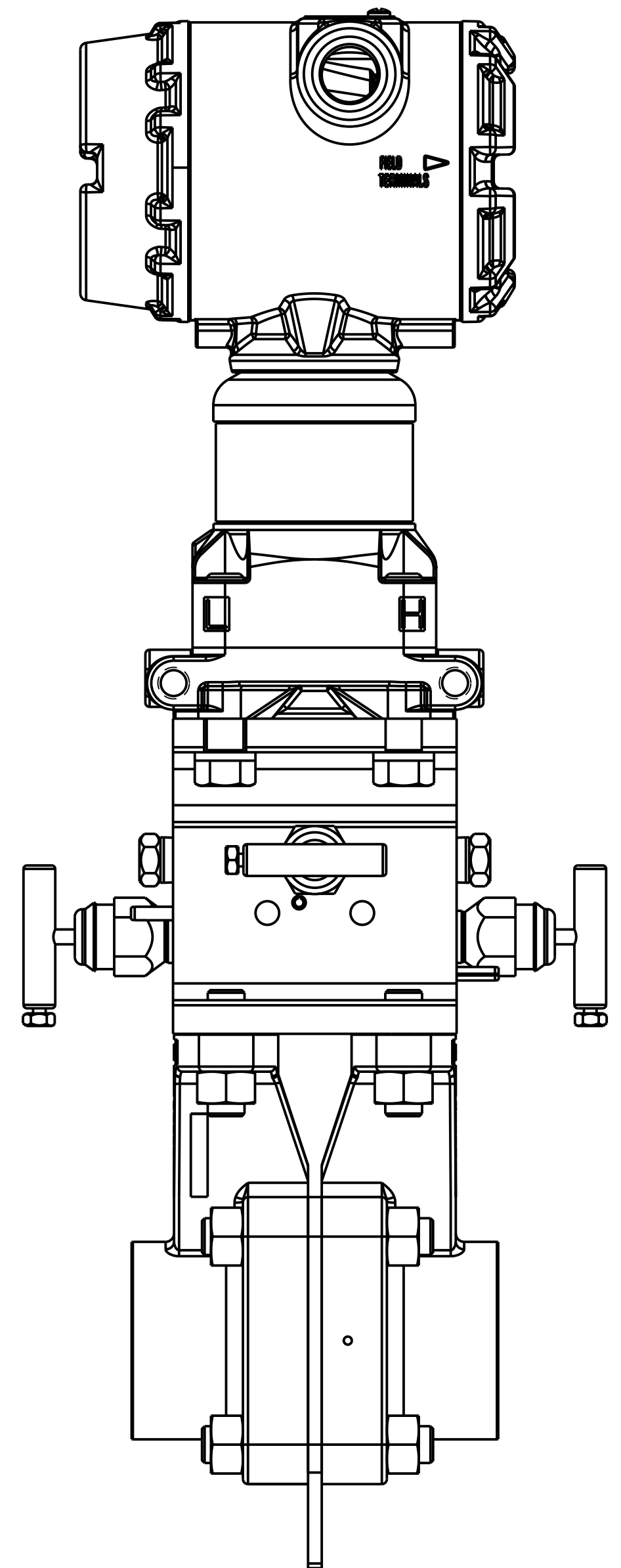


TRANSMITTER MANIFOLD ASSEMBLY
 CONNECT WITH 1195
 EXPLODED VIEW

| | | | |
|--|---|------------|--------------|
| ©2015 ROSEMOUNT, INC. ROSEMOUNT INC. EXPRESSLY DISCLAIMS LIABILITY FOR THIS DOCUMENT. THIS DOCUMENT IS PROVIDED AS IS. ROSEMOUNT ENGINEERING SHALL NOT BE RESPONSIBLE FOR ANY DAMAGES, INCLUDING CONSEQUENTIAL DAMAGES, ARISING OUT OF THE USE OF THIS DOCUMENT. | 3RD ANGLE | SIZE D | SCALE NTS |
| | | | |
| | TITLE ROSEMOUNT TOP ASSEMBLY, 1195 4-BOLT TYPE I DRAWING | | |
| | DR. M.ZHENG 04/06/16 DRAWING NO. | 01195-1004 | |
| APP'D C.HAN 04/06/16 | CAD MAINTAINED: (PRO/EI) SHEET 9 OF 11 | | |

Electronic Master - Printed Copies Uncontrolled - Rosemount Proprietary

| FLOWMETER | TRANSMITTER X | TRANSMITTER Y | | |
|-----------|---------------|--------------------------|------------------------|----------------------------|
| | | LINE SIZE 1/2" [12,7] | LINE SIZE 1" [25,4] | LINE SIZE 1-1/2" [38,1] |
| 2051CFP | 7.03 [178,5] | 13.85 [351,8] | 14.10 [358,1] | 14.50 [368,3] |
| 3051CFP | 7.12 [181,0] | 13.92 [353,6] | 14.17 [359,9] | 14.57 [370,1] |
| 3051SFP | 8.55 [217,0] | 15.37 [390,4] | 15.62 [396,7] | 16.02 [406,9] |



DIRECT MOUNT TRANSMITTER AND MANIFOLD
WHEN B31.1, B31.3, (J2, J3) OR C-276
MANIFOLD (D4, D6) ARE SELECTED.

©2015 ROSEMOUNT, INC.
ROSEMOUNT INCORPORATES
THIS INFORMATION IN
THIS DRAWING IN ACCORDANCE WITH
ROSEMOUNT ENGINEERING
SPECIFICATIONS.
UNIT NOTES IN INCHES (mm).

REFERENCE ROSEMOUNT
PRODUCT SHEETS FOR
PRODUCT SPECIFICATIONS.
CLICK HERE

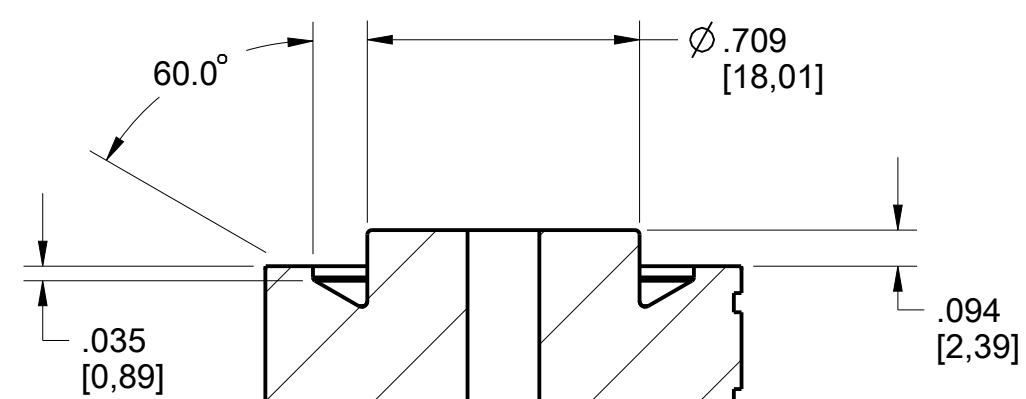
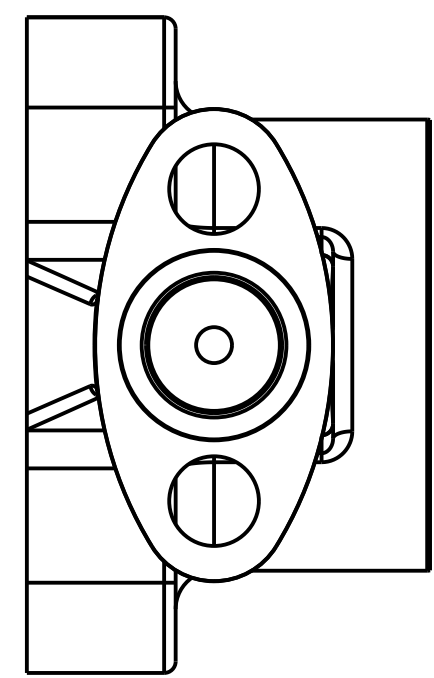
3RD ANGLE

EMERSON

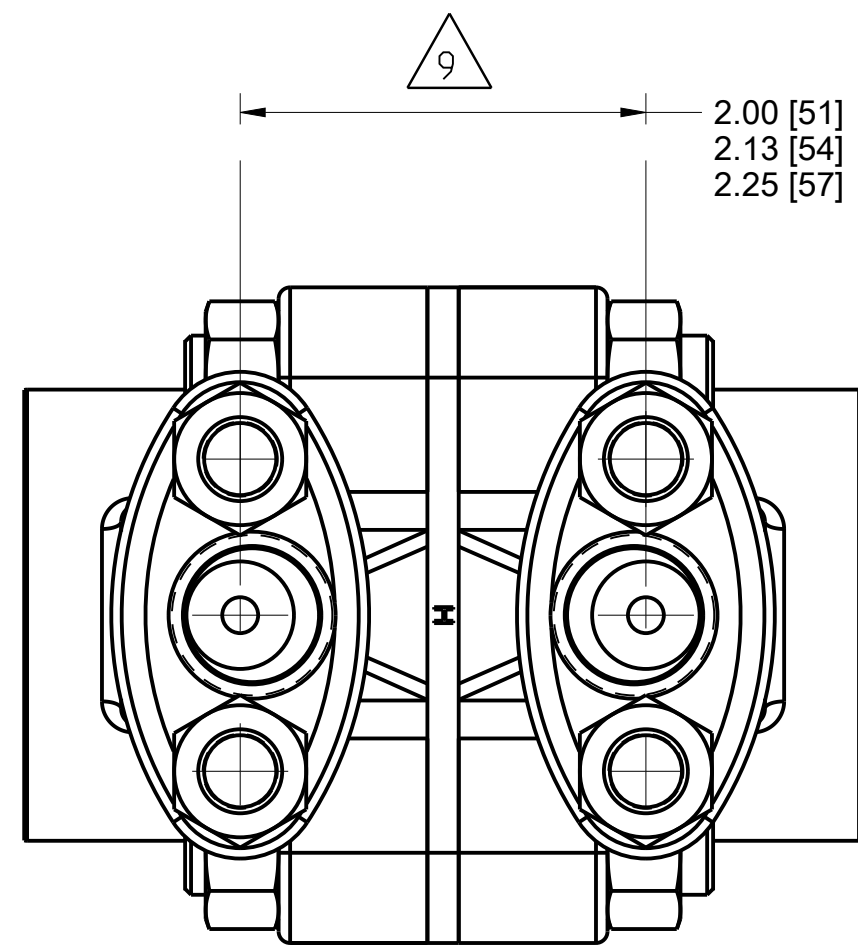
TITLE ROSEMOUNT TOP ASSEMBLY, 1195 4-BOLT
TYPE I DRAWING

DR. M.ZHENG 04/06/16 DRAWING NO. 01195-1004
APP'D C.HAN 04/06/16

CAD MAINTAINED. (PRO/E) SHEET 10 OF 11



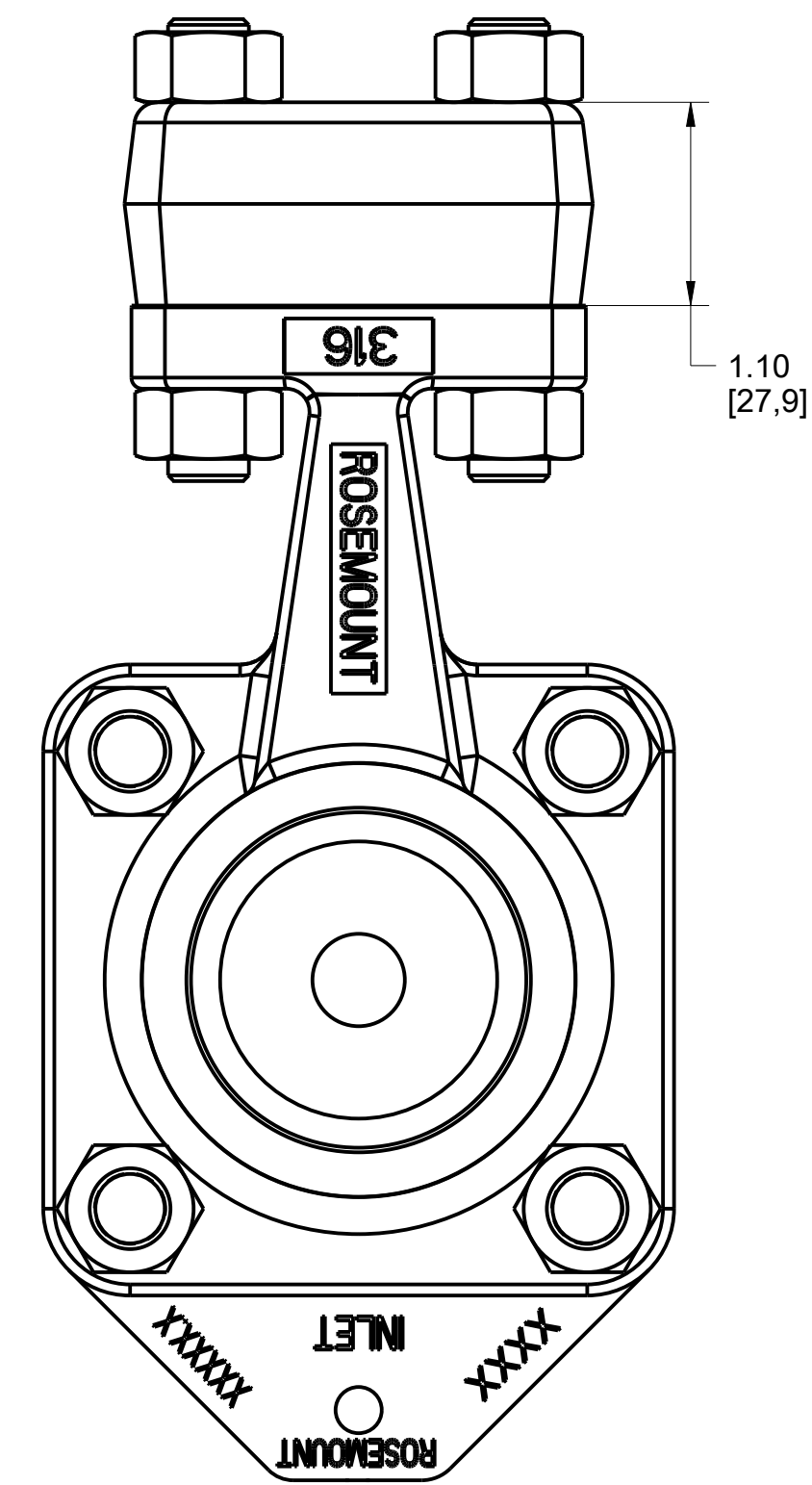
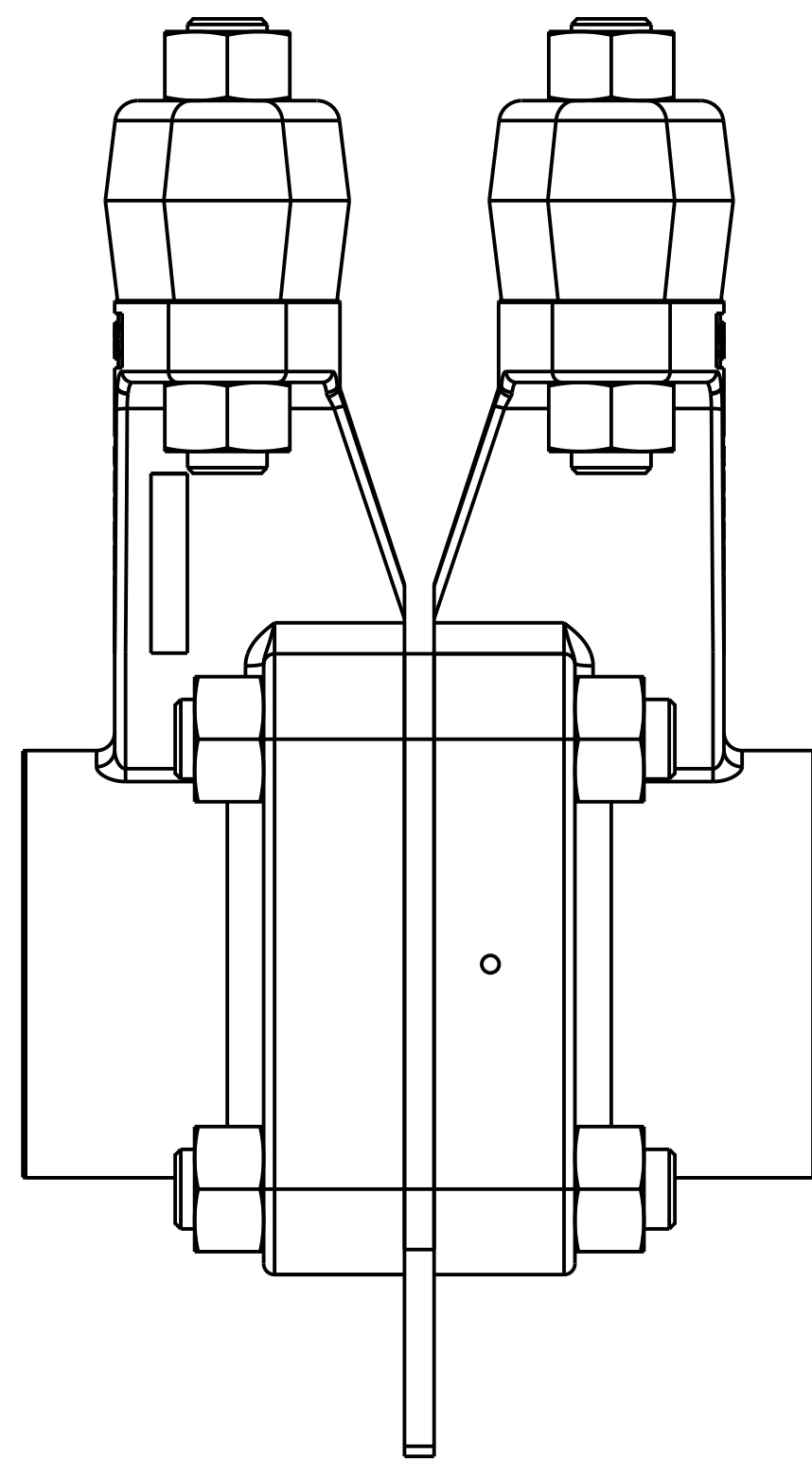
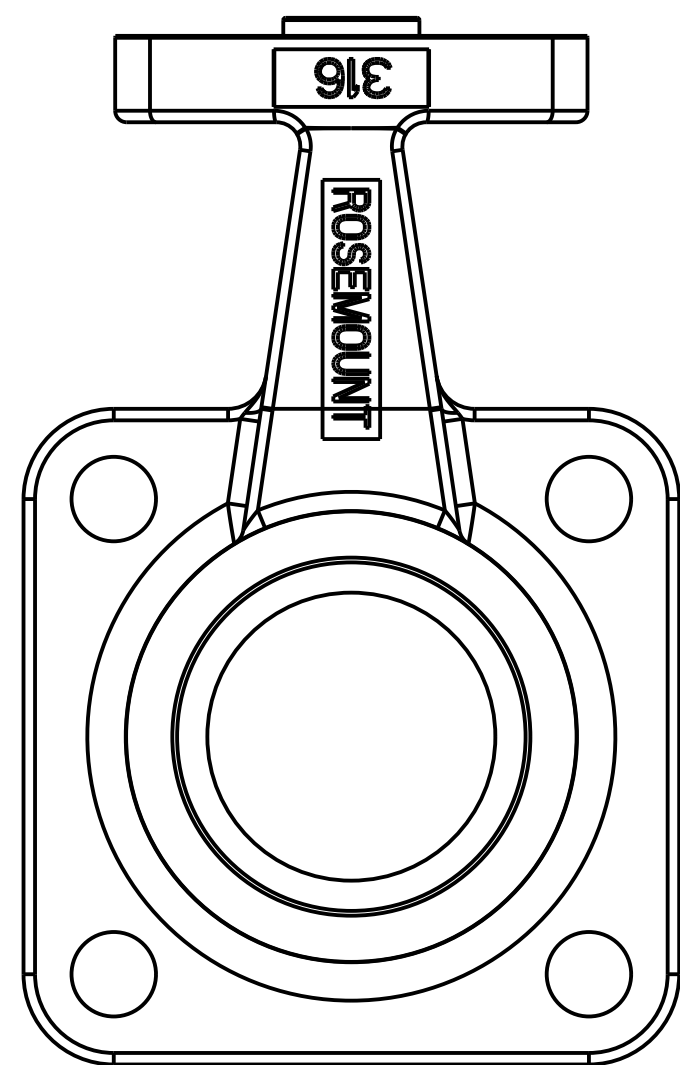
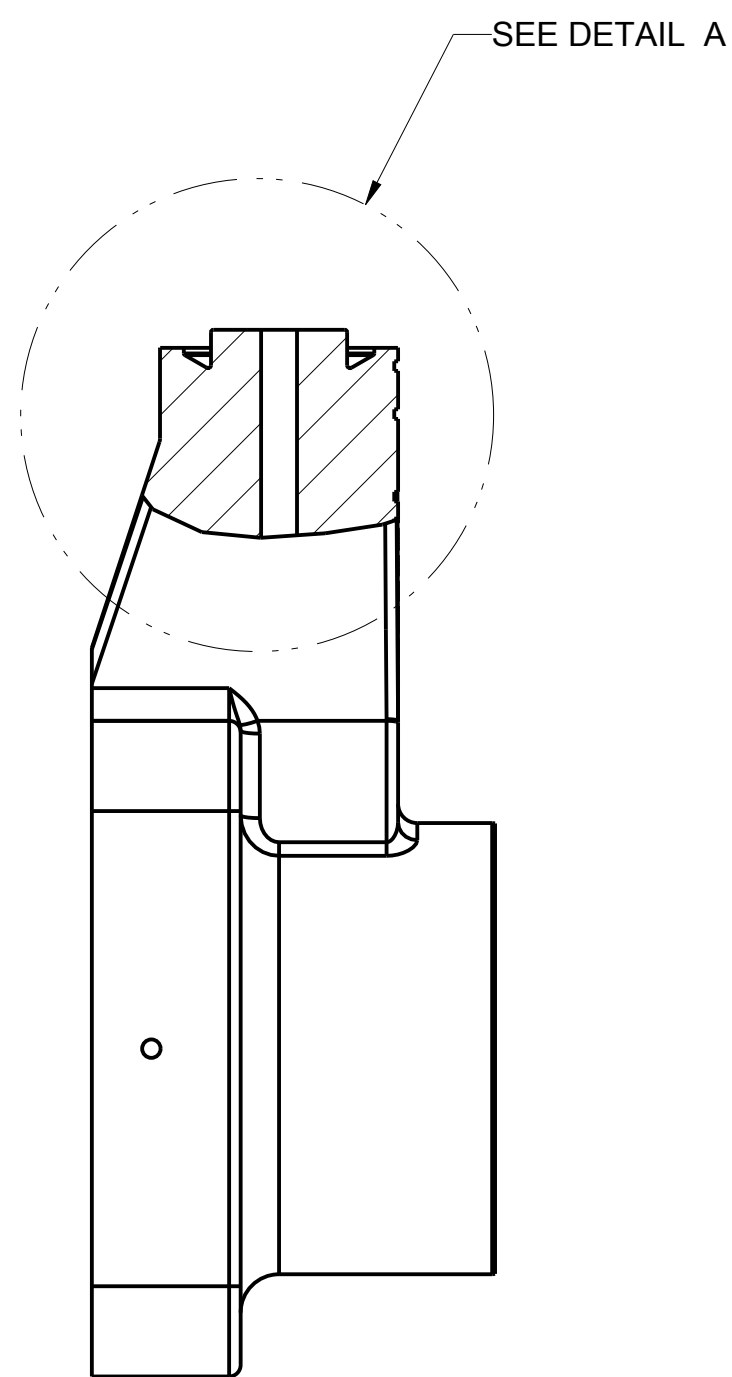
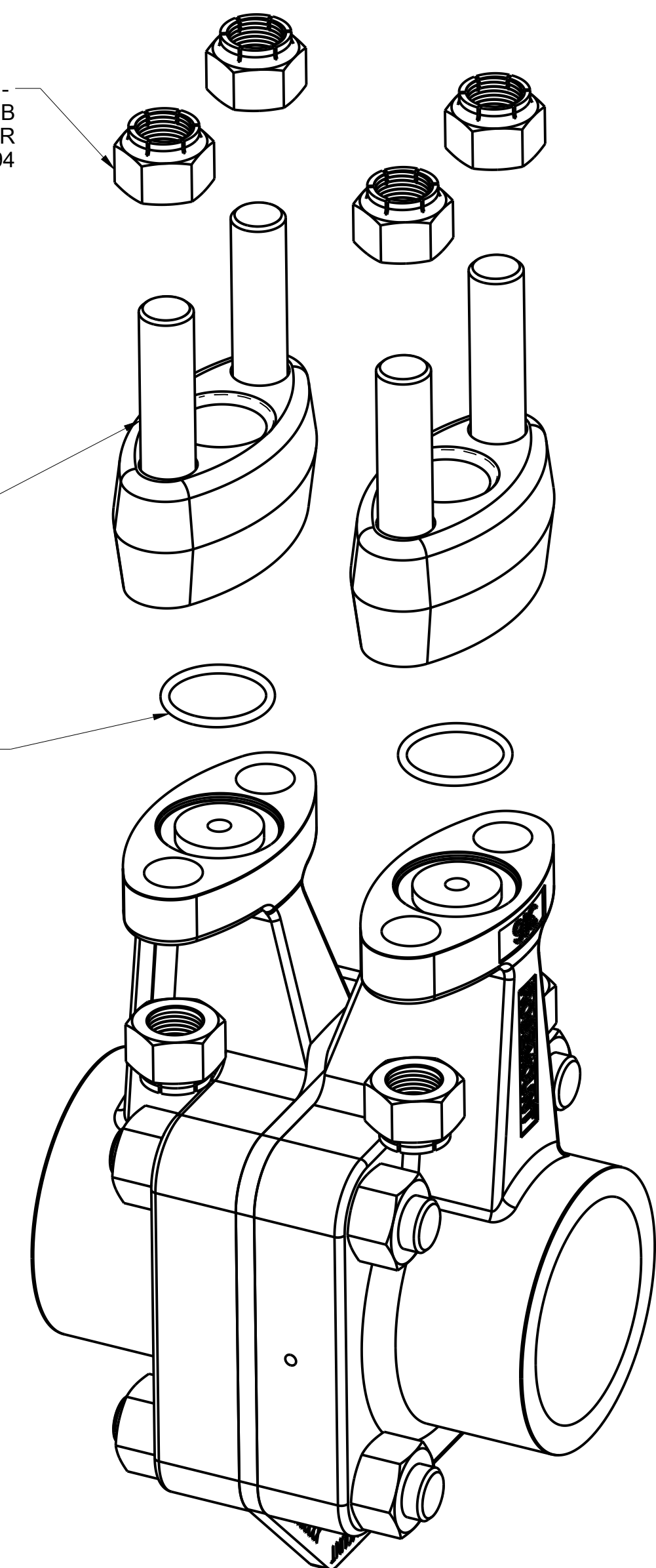
DETAIL A
SCALE 2/1



8X NUT -
CORROSION RES, AUSTINETIC, 7/16-20 UNJF-3B
OR
316SS, 7/16-20 ASTM A194

4X STUD -
ASTM A-193 GR B8M GLASS2
OR
ASTM A-193 GR B8M GLASS1

2X
INCONEL X-750 METAL GASKET
OR
PTFE/GLASS FILLED GASKET



DIN 19231 TRANSMITTER
CONNECTION

ADAPTER FOR REMOTE MOUNTING

| | | | |
|---|---|--------------------------|-------------------------------|
| <small>©2015 ROSEMOUNT, INC. ROSEMOUNT INCORPORATES THIS INFORMATION IN THIS ACCORDANCE WITH ROSEMOUNT ENGINEERING SPECIFICATIONS. UNIT NOTES IN INCHES (mm). REFERENCE ROSEMOUNT PRODUCT SHEETS FOR PRODUCT SPECIFICATIONS. CLICK HERE</small> | <small>3RD ANGLE</small> | <small>SIZE</small> D | <small>SCALE</small> NTS |
| | | | |
| | TITLE ROSEMOUNT TOP ASSEMBLY, 1195 4-BOLT TYPE I DRAWING | | |
| | <small>DR.</small> M.ZHENG 04/06/16 <small>DRAWING NO.</small> | 01195-1004 | |
| <small>APP'D</small> C.HAN 04/06/16 | <small>CAD MAINTAINED (PRO/E)</small> | | |
| | | | <small>SHEET 11 OF 11</small> |